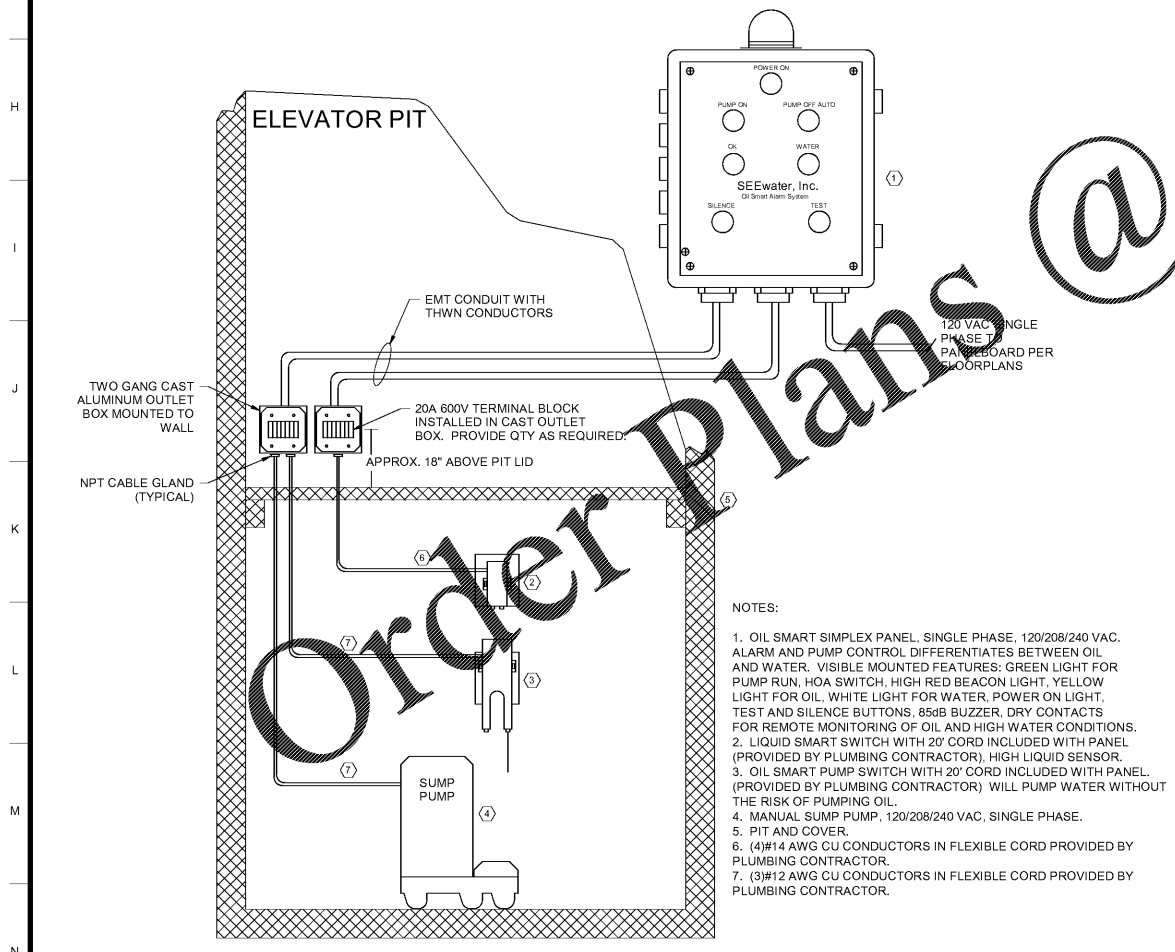
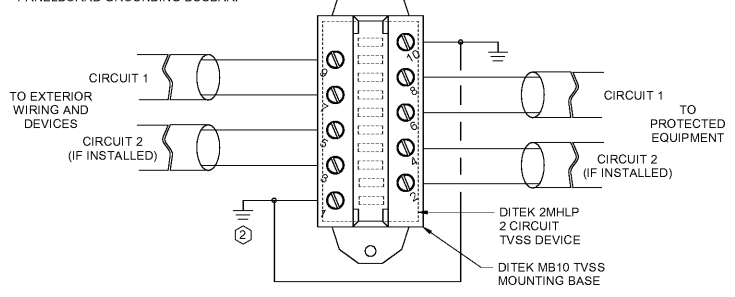


- NOTES:
1. PROVIDE A MINIMUM OF 3-1/2" CLEARANCE BETWEEN LOW VOLTAGE CABLING AND ANY POWER CONDUIT OR WIRING.
 2. PROVIDE UNISTRUT TRAPEZE AS SHOWN, OR WALL STRUT/ANCHOR SYSTEM FOR SUPPORT OF CONDUIT ALONG CORRIDOR.
 3. RECESSED LIGHT FIXTURES SHOULD BE SUPPORTED FROM HANGER WIRE ATTACHED TO STRUCTURE. DO NOT SUPPORT FROM J-BOXES. SUSPENDED & SURFACE MOUNT LIGHT FIXTURES SHALL BE SUPPORTED BY THREADED ROD ATTACHED TO STRUCTURE. HANGER WIRE.
 4. REFER TO ARCHITECTURAL AND STRUCTURAL DRAWINGS FOR IDENTIFICATION, LOCATIONS, AND SIZES OF STRUCTURAL MEMBERS. REFER TO MECHANICAL DRAWINGS FOR LOCATIONS AND SIZES OF HVAC DUCT WORK.
 5. PROVIDE HANGER WIRE AND J-HOOK SUPPORT FOR ANY LOW VOLTAGE CABLING WHICH CROSSES FROM ONE SIDE OF CORRIDOR TO THE OTHER (4'-0" O.C.).

TVSS DETAIL NOTES:

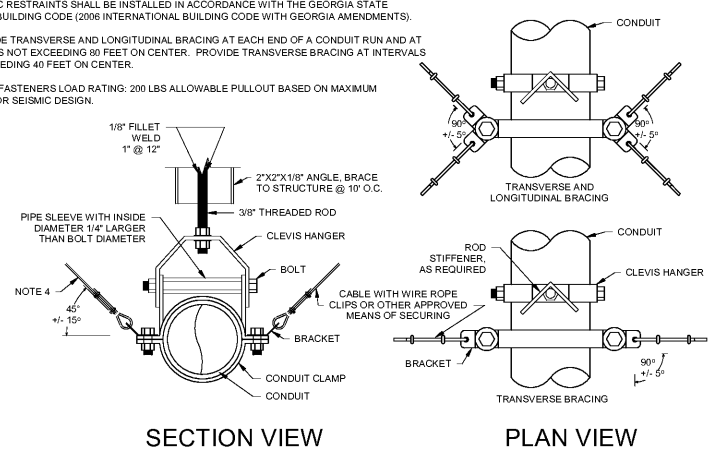
1. PROVIDE TVSS FOR EACH COMMUNICATION CIRCUIT WHERE IT ENTRIES ENTERS A BUILDING.
2. ELECTRICAL CONTRACTOR SHALL PROVIDE GROUNDING CONDUCTOR SIZED PER TABLE FROM TVSS DEVICE LOCATION TO NEAREST INTERSYSTEM GROUNDING BUSBAR, TELECOMMUNICATIONS GROUNDING BUSBAR, OR PANELBOARD GROUNDING BUSBAR.

TABLE: GROUNDING CONDUCTOR SIZE	
WIRE SIZE	MAX DISTANCE
12 AWG	26 FT
10 AWG	48 FT
8 AWG	71 FT
6 AWG	114 FT



- NOTES:
1. OIL SMART SIMPLEX PANEL, SINGLE PHASE, 120/208/240 VAC. ALARM AND PUMP CONTROL DIFFERENTIATES BETWEEN OIL AND WATER. VISIBLE MOUNTED FEATURES: GREEN LIGHT FOR PUMP RUN, HOA SWITCH, HIGH RED BEACON LIGHT, YELLOW LIGHT FOR OIL, WHITE LIGHT FOR WATER, POWER ON LIGHT, TEST AND SILENCE BUTTONS, 85dB BUZZER, DRY CONTACTS FOR REMOTE MONITORING OF OIL AND HIGH WATER CONDITIONS.
 2. LIQUID SMART SWITCH WITH 20' CORD INCLUDED WITH PANEL (PROVIDED BY PLUMBING CONTRACTOR), HIGH LIQUID SENSOR.
 3. OIL SMART PUMP SWITCH WITH 20' CORD INCLUDED WITH PANEL (PROVIDED BY PLUMBING CONTRACTOR) WILL PUMP WATER WITHOUT THE RISK OF PUMPING OIL.
 4. MANUAL SUMP PUMP, 120/208/240 VAC, SINGLE PHASE.
 5. PIT AND COVER.
 6. (4)#14 AWG CU CONDUCTORS IN FLEXIBLE CORD PROVIDED BY PLUMBING CONTRACTOR.
 7. (3)#12 AWG CU CONDUCTORS IN FLEXIBLE CORD PROVIDED BY PLUMBING CONTRACTOR.

- NOTES FOR SEISMIC BRACING:
1. PROVIDE SEISMIC RESTRAINTS FOR ALL CONDUIT, CABLE TRAYS, AND OTHER ELECTRICAL DISTRIBUTION SYSTEMS (RACEWAYS), EXCEPT THAT RESTRAINTS SHALL NOT BE REQUIRED FOR:
 - A. RACEWAYS SECURELY FASTENED TO BUILDING STRUCTURE OR THE GROUND, OR
 - B. CONDUITS LESS THAN 2-1/2" TRADE SIZE, OR
 - C. RACEWAY SUPPORTED BY HANGERS 12" OR LESS IN LENGTH FROM THE SUPPORT POINT TO THE SUPPORTING STRUCTURE. WHERE ROD HANGERS ARE USED, THEY SHALL BE INSTALLED WITH SWIVELS, OR
 - D. TRAPEZE ASSEMBLIES WEIGHING LESS THAN 10 LBS/FT.
 2. SEISMIC RESTRAINTS SHALL BE INSTALLED IN ACCORDANCE WITH THE GEORGIA STATE MINIMUM BUILDING CODE (2006 INTERNATIONAL BUILDING CODE WITH GEORGIA AMENDMENTS).
 3. PROVIDE TRANSVERSE AND LONGITUDINAL BRACING AT EACH END OF A CONDUIT RUN AND AT INTERVALS NOT EXCEEDING 80 FEET ON CENTER. PROVIDE TRANSVERSE BRACING AT INTERVALS NOT EXCEEDING 40 FEET ON CENTER.
 4. CABLE FASTENERS LOAD RATING: 200 LBS ALLOWABLE PULLOUT BASED ON MAXIMUM S_{ds}=0.5 FOR SEISMIC DESIGN.



SA&E PROJECT NUMBER	01-615-056
BID PACKAGE	BP-1
ISSUED FOR CONSTRUCTION	10/15/2019
Southern AE 7951 Traxon Circle Austell, Ga 30168 (770) 519-7777 architects & engineers	REVISIONS
	R # Doc # Date
FACILITY CODE NUMBER: 674-0110	
GYMNASIUM/AUDITORIUM FOR:	
HEARD COUNTY SCHOOLS	
545 MAIN STREET, FRANKLIN, GA 30217	
HEARD COUNTY SCHOOL SYSTEM	
FRANKLIN, GEORGIA	
DETAILS	
STATE OF GEORGIA REGISTERED PROFESSIONAL ARCHITECT	DRAWING NUMBER
STATE OF GEORGIA REGISTERED PROFESSIONAL ARCHITECT	E502