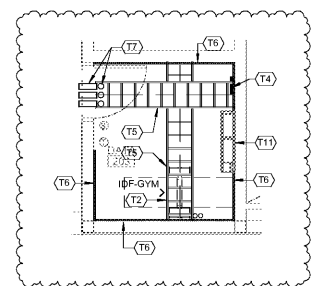
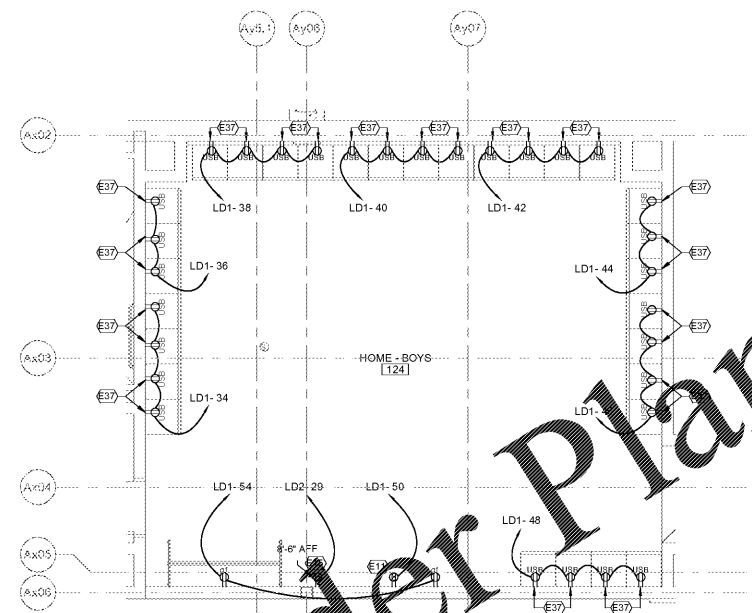


1 ENLARGED DATA RM 156 PLAN - IDF-AUD
1/4" = 1'-0"

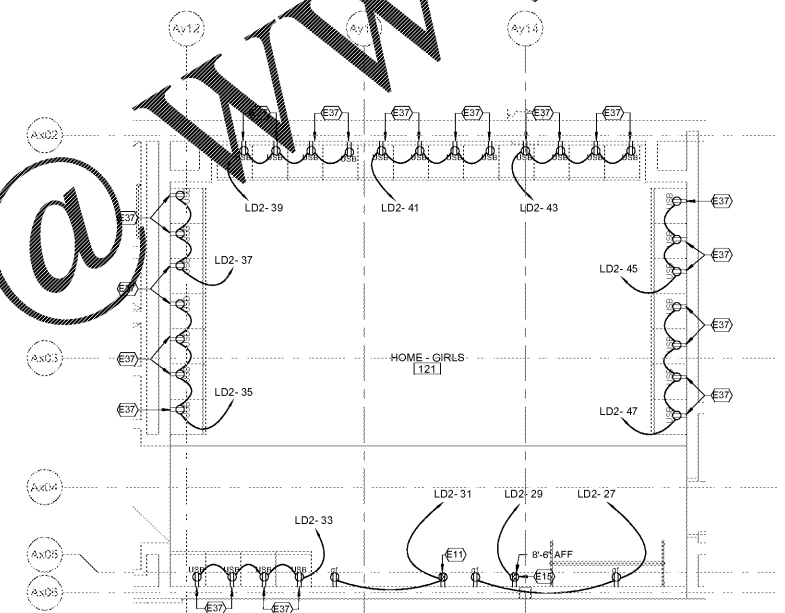
#	KEYNOTE DESCRIPTION
T2	FLOOR MOUNTED TELECOMMUNICATIONS EQUIPMENT RACK 2-POST OR 4-POST, AS INDICATED, WITH VERTICAL AND HORIZONTAL CABLE MANAGEMENT. REFER TO RACK ELEVATIONS AND DIVISION 27 SPECIFICATIONS. COORDINATE EXACT LOCATION RACK LAYOUT AND.
T4	TELECOMMUNICATIONS GROUNDING BUSBAR (TGB) MOUNTED 7'-0" AFF. REFER TO TELECOMMUNICATIONS GROUNDING ONE-LINE & SECTION 26 05 26. PROVIDE BONDING CONDUCTOR TO ALL RACKS AND EQUIPMENT IN THIS SPACE.
T5	18" LADDER CABLE TRAY INSTALLED AT 90° ABOVE FINISHED FLOOR. PROVIDE LADDER RACK TO EQUIPMENT CABINET BRACING AND CABLE DROP OUTS AT EACH RACK, OR AS SHOWN ON EQUIPMENT RACK ELEVATIONS.
T6	FIRE RATED 3/4" x 8'-0" GRADE A/C PLYWOOD INSTALLED ON ALL WALLS IN THIS SPACE. PAINT FRONT SIDE AND ALL EDGES WITH LIGHT COLORED FIRE RETARDANT PAINT. PROVIDE OUTLET BOX EXTENSION RING AS REQUIRED FOR DEVICES INSTALLED IN WALLS TO RECEIVE PLYWOOD TO BRING THE FACE FLUSH WITH WOOD SURFACE.
T7	CORED HOLES THROUGH MASONRY WALL WITH 4" SLEEVES INSTALLED ABOVE FINISHED CEILING. INSTALL BONDING BUSHINGS ON EACH SLEEVE AND BOND TO LADDER RACK AND/OR CABLE TRAY ON EACH SIDE OF WALL. IF PRESENT, FIRE-STOP ALL PENETRATIONS PER SECTION 07 84 13. FOR EACH SLEEVE SHOWN, PROVIDE ONE 4" SLEEVE (12" LONG) THRU SUSPENDING CEILING FOR PASSAGE OF CABLE TO LADDER RACK. SECURE SLEEVES TO WALL VIA UNISTRUT AND CLAMPS. INSTALL BONDING BUSHING ON EACH SLEEVE AND BOND TO TGB/TMGS.
T11	WALL MOUNTED HVAC UNIT. COORDINATE ROUGH-IN OF ALL HVAC, PLUMBING AND FIRE PROTECTION EQUIPMENT IN THIS SPACE WITH RESPECTIVE CONTRACTORS.
T13	(2) 4" RACEWAYS ROUTED BELOW GRADE TO UTILITY POLE AT PROPERTY LINE FOR FUTURE TELEPHONE/COMMUNICATION CO. CONNECTION. STUB RACEWAYS UP 12" AFF AND SECURE TO WALL. PROVIDE CONDUIT SEALS AND LABEL EACH RACEWAY "COMM FROM STREET". REFER TO SITE PLAN ON DRAWING E004 FOR CONTINUATION AND ADDITIONAL REQUIREMENTS.
T14	(2) 4" INTERBUILDING RACEWAYS ROUTED BELOW GRADE TO EXISTING VOCATIONAL BUILDING, THEN OVERHEAD TO IDF RACK. STUB RACEWAYS UP 12" AFF AND SECURE TO WALL. PROVIDE CONDUIT SEALS AND LABEL EACH RACEWAY "COMM TO VOCATIONAL BLDG". REFER TO SITE PLAN ON DRAWING E004 FOR CONTINUATION AND ADDITIONAL REQUIREMENTS.
T15	(2) 3" INTERBUILDING RACEWAYS ROUTED BELOW GRADE TO CLOSET 104, TRANSITION TO EMT BELOW GRADE AND EXTEND UP TO DATA RM 203. CORE DRILL FLOOR PENETRATION AND SECURE RACEWAY TO WALL 12" ABOVE 2ND FLOOR LEVEL. LEAVE EACH RACEWAY WITH (1) 3-CELL FABRIC INNERDUCT, SEPARATE PULL STRING, BUSHED OPENING AND GROUND BUSHING.



2 ENLARGED DATA RM 203 (GYM) - IDF-GYM
1/4" = 1'-0"



3 LEVEL 01 - HOME BOYS 124 - POWER PLAN
1/8" = 1'-0"



4 LEVEL 01 - HOME GIRLS 121 - POWER PLAN
1/4" = 1'-0"

#	KEYNOTE DESCRIPTION
E11	DUPLEX RECEPTACLE AT THIS LOCATION SHALL BE INSTALLED IN RECESSED DISPLAY WALL BOX AT 60" AFF. U.O.N.
E15	PROVIDE 120V POWER IN OUTLET BOX 8'-6" AFF FOR CONNECTION TO LOCKER ROOM CLOCK. COORDINATE INSTALLATION REQUIREMENTS WITH CLOCK VENDOR SHOP DRAWINGS PRIOR TO ROUGH-IN.
E37	LOCATE DUPLEX RECEPTACLE W/ USB OUTLETS INSIDE OF LOCKED COMPARTMENT OF ATHLETIC LOCKER. MOUNT RECEPTACLE IN A SURFACE BOX W/ FLEXIBLE WHIP ROUTED THROUGH TOPBACK OF LOCKER FOR CONNECTION TO FLUSH MOUNTED J-BOX LOCATED ABOVE LOCKER. COORDINATE ROUGH-IN REQUIREMENTS WITH VENDOR SHOP DRAWINGS. PROVIDE GROMMET TO SEAL AROUND WHIP PENETRATION IN TOPBACK OF LOCKER.

Order Plans @

WWW.LDILine.com

SA&E PROJECT NUMBER	01-615-056
BID PACKAGE	BP-1
ISSUED FOR CONSTRUCTION	10/15/2019
Southern AE 7951 Truon Circle Austell, Ga 30168 (770) 819-7777 architects & engineers	REVISIONS R # Doc # Date 1 AD1 11.4.2019
	FACILITY CODE NUMBER: 674-0110 GYMNASIUM/AUDITORIUM FOR: HEARD COUNTY SCHOOLS 545 MAIN STREET, FRANKLIN, GA 30217 HEARD COUNTY SCHOOL SYSTEM FRANKLIN, GEORGIA
ENLARGED PLANS	
STATE OF GEORGIA REGISTERED PROFESSIONAL ARCHITECT No. 27157 STATE OF GEORGIA REGISTERED PROFESSIONAL ENGINEER No. 10580 STATE OF GEORGIA REGISTERED PROFESSIONAL ELECTRICAL ENGINEER No. 10580	DRAWING NUMBER
	E401