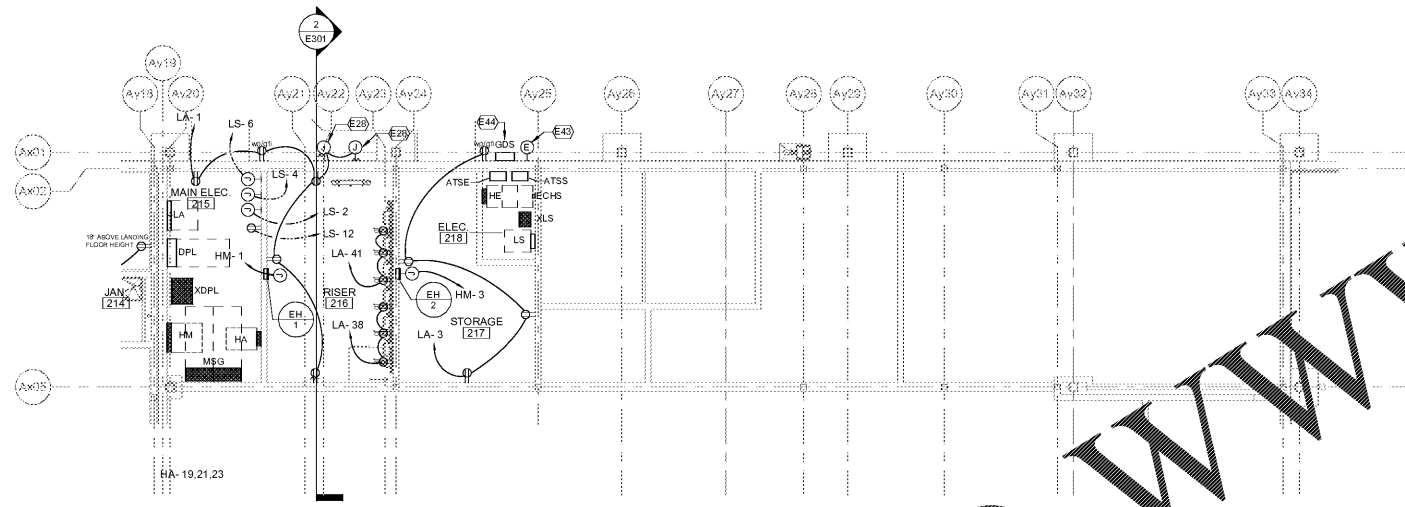


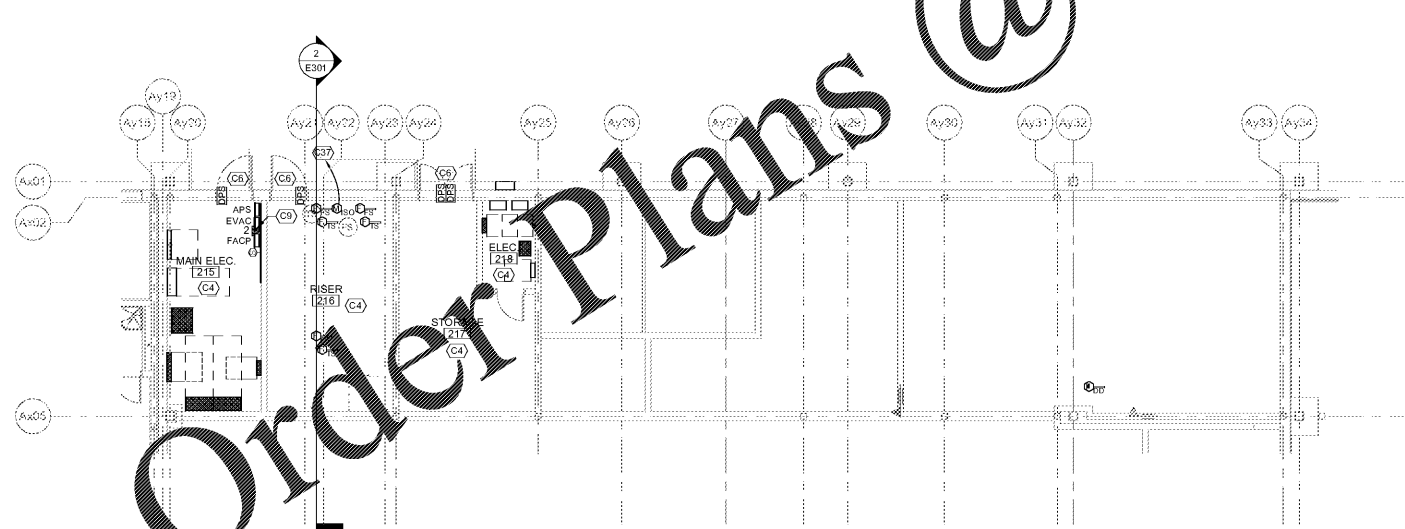
#	KEYNOTE DESCRIPTION
L10	ALL OCCUPANCY SENSOR AND LIGHTING CONTROL WIRING IN THIS SPACE SHALL BE INSTALLED IN RACEWAY.
L23	0-10V WIRING (PURPLE/GREY) IS NOT SHOWN ON THIS PLAN BUT SHALL BE PROVIDED IN ALL SPACES THAT HAVE DIMMING SYSTEM.

2 LEVEL 02 - AUDITORIUM - LIGHTING PLAN
1/8" = 1'-0"



#	KEYNOTE DESCRIPTION
E28	PROVIDE 120V CONNECTION TO FIRE ALARM SPRINKLER BELL AT THIS LOCATION. VERIFY MOUNTING HEIGHT WITH PLUMBING CONTRACTOR PRIOR TO ROUGH-IN.
E43	GENERATOR EMERGENCY SHUTDOWN BUTTON W/ PROTECTIVE COVER. PROVIDE 3/4" CONDUIT W/ WIRING TO GENERATOR AND TRANSFER SWITCHES. COORDINATE INSTALLATION REQUIREMENTS WITH VENDOR SHOP DRAWINGS PRIOR TO ROUGH-IN.
E44	GENERATOR DOCKING STATION. REFER TO POWER RISER DIAGRAM AND SECTION 26 52 00 FOR ADDITIONAL REQUIREMENTS.

1 LEVEL 02 - AUDITORIUM - POWER PLAN
1/8" = 1'-0"

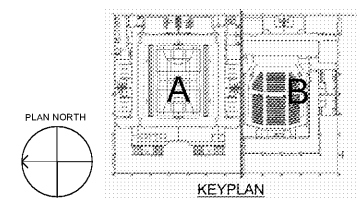


#	KEYNOTE DESCRIPTION
C4	ALL CABLING WITHIN THIS SPACE SHALL BE INSTALLED IN RACEWAY. PAINT EXPOSED RACEWAY TO MATCH FINISH OF WALL OR CEILING.
C6	AT THIS OPENING, PROVIDE CONDUIT AND BOXES FOR ACCESS CONTROL DOOR. ROUGH-IN, PER DETAIL.
C9	THIS DATA OUTLET SHALL BE INSTALLED WITHIN THE FIRE ALARM SYSTEM (PGSM COMMUNICATOR). CABLING SHALL BE INSTALLED IN CONDUIT TO J-HOOK SYSTEM.
C37	FIRE ALARM CABLING AND CONDUIT TO TAMPERFLOW SWITCHES AT RIV. REFER TO SITE PLAN FOR APPROXIMATE LOCATION. COORDINATE INSTALLATION REQUIREMENTS WITH SPRINKLER SYSTEM SHOP DRAWINGS PRIOR TO ROUGH-IN.

3 LEVEL 02 - AUDITORIUM - SPECIAL SYSTEMS PLAN
1/8" = 1'-0"

WWW.DILine.com

Order Plans @



SA&E PROJECT NUMBER	01-615-056
BID PACKAGE	BP-1
ISSUED FOR CONSTRUCTION	10/15/2019
Southern AE 7951 Traxon Circle Austell, Ga 30168 (770) 519-7777 architects & engineers	REVISIONS R# Doc# Date 1 AD1 11.4.2019
	FACILITY CODE NUMBER: 674-0110 GYMNASIUM/AUDITORIUM FOR: HEARD COUNTY SCHOOLS 545 MAIN STREET, FRANKLIN, GA 30217 HEARD COUNTY SCHOOL SYSTEM FRANKLIN, GEORGIA
AUDITORIUM - LEVEL 02 - LIGHT, POWER, COMM PLANS	
STATE OF GEORGIA REGISTERED ARCHITECT [Signature]	DRAWING NUMBER E118