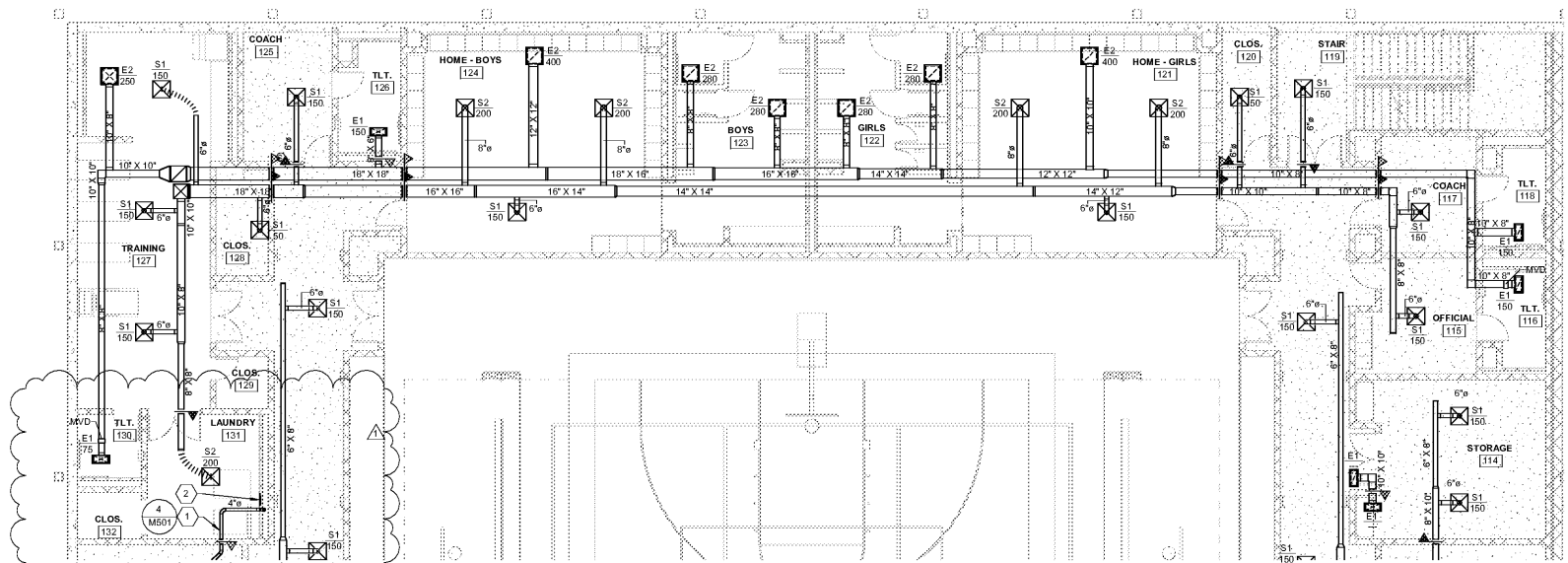
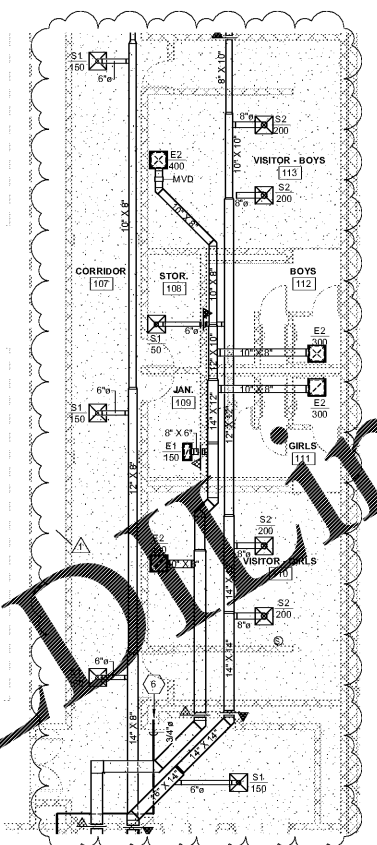


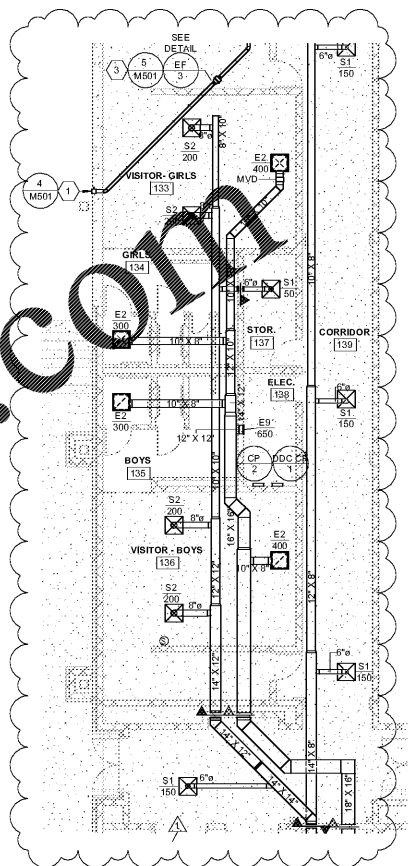
A
B
C
D
E
F
G
H
I
A
K
L
M
N



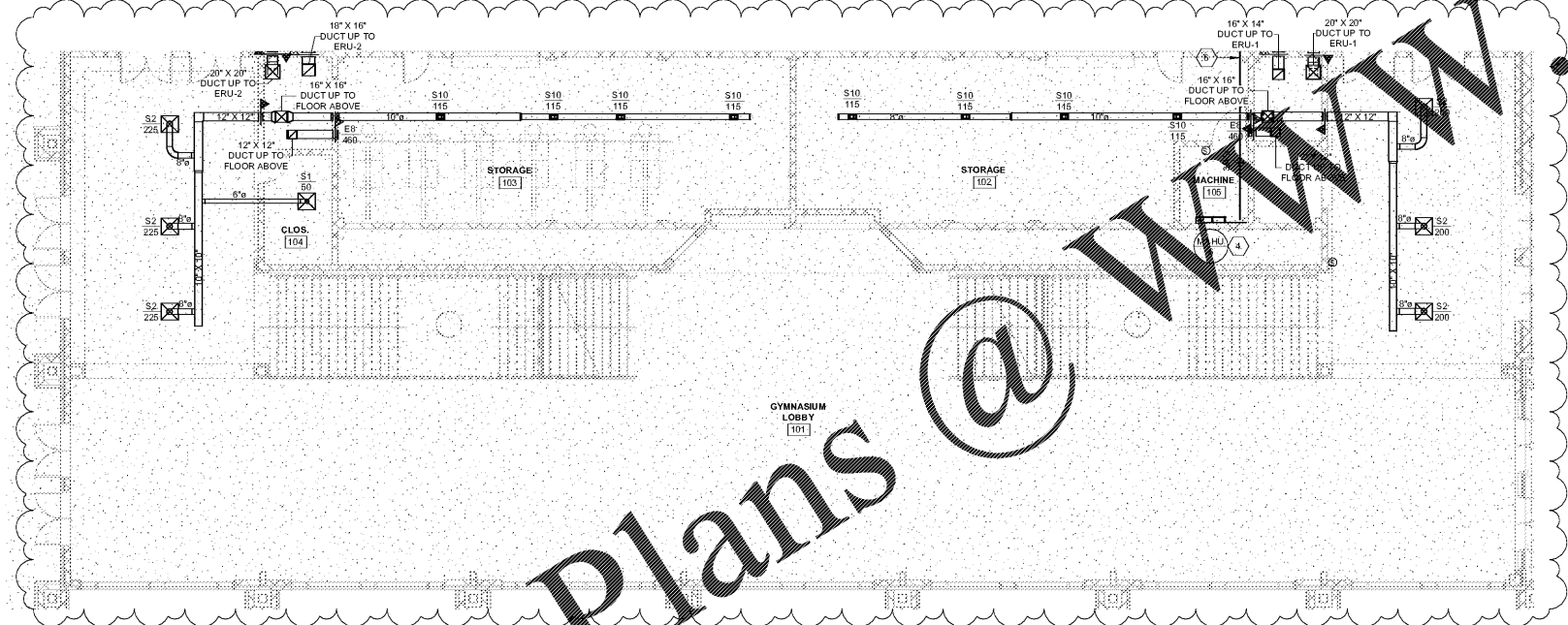
1 LEVEL 01 MECHANICAL PLAN - GYM - HOME
1/8" = 1'-0"



2 LEVEL 01 MECHANICAL PLAN - GYM - VISITOR LEFT
1/8" = 1'-0"

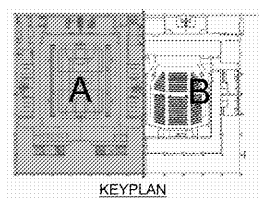


3 LEVEL 01 MECHANICAL PLAN - GYM - VISITOR RIGHT
1/8" = 1'-0"



4 LEVEL 01 MECHANICAL PLAN - GYM - LOBBY
1/8" = 1'-0"

Order Plans @ www.lldline.com



KEYNOTES	
1	4" DIAMETER MINIMUM 24 GAUGE DRYER VENT. ROUTE UP IN CHASE, THROUGH EXTERIOR WALL AND TERMINATE WITH WALL CAP. PROVIDE FLAPPER DAMPER. TERMINATE INSIDE 6" A.F.F. AND PROVIDE LINT TRAP.
2	16"x16" LOCKABLE ACCESS DOOR. BOTTOM OF DOOR AT 1'-0" A.F.F.
3	INLINE DUCT BOOSTER FAN SIMILAR TO FANTECH FR150 - RE: EXHAUST FAN SCHEDULE.
4	INSTALL MINI-SPLIT ON WALL AS HIGH AS POSSIBLE BUT BELOW CEILING. INSTALL CONDENSATE LIFT PUMP (TYPE CLEARVUE MINI OR APPROVED ALTERNATE) AND ROUTE CONDENSATE DRAIN LINE UP THROUGH CEILING TO HUB DRAIN IN CHASE. ROUTE REFRIGERANT PIPING TO OUTDOOR UNIT IN MOST DIRECT WAY POSSIBLE. CONCEAL EXPOSED PUMP, PIPING AND CONDUIT - RE: DETAIL 11/M501.
6	CONDENSATE DRAIN LINE WITH MINIMUM 1% SLOPE ROUTED ABOVE CEILING. TERMINATE IN HUB DRAIN - RE: PLUMBING DRAWING FOR EXACT HUB DRAIN LOCATION.

SA&E PROJECT NUMBER	01-615-056
BID PACKAGE	BP-1
ISSUED FOR CONSTRUCTION	10/15/2019
Southern AE 7951 Troon Circle Austell, Ga 30168 (770) 519-7777 architects & engineers	REVISIONS
	R# Doc# Date 1 AD1 11.4.2019

FACILITY CODE NUMBER: 674-0110
 GYMNASIUM/AUDITORIUM FOR:
HEARD COUNTY SCHOOLS
 545 MAIN STREET, FRANKLIN, GA 30217
HEARD COUNTY SCHOOL SYSTEM
 FRANKLIN, GEORGIA

MECHANICAL PLAN - LEVEL 01 - GYMNASIUM

DRAWING NUMBER
M101