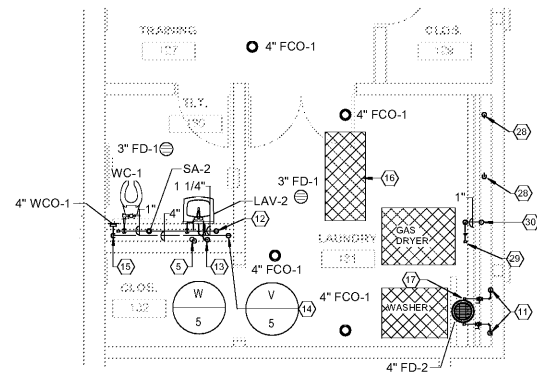
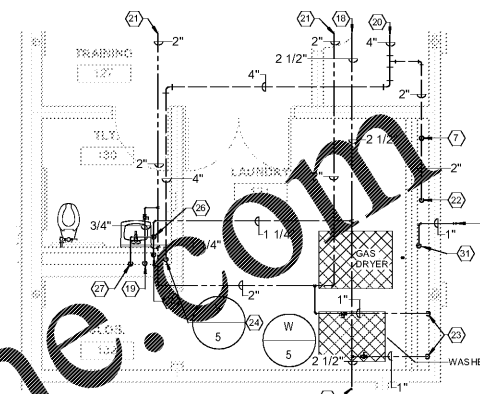


1 LEVEL 01 ENLARGED PLUMBING BELOW FLOOR PLAN - LAUNDRY 131  
1/4" = 1'-0"



2 LEVEL 01 ENLARGED PLUMBING ABOVE FLOOR PLAN - LAUNDRY 131  
1/4" = 1'-0"



3 LEVEL 01 ENLARGED PLUMBING ABOVE CEILING PLAN - LAUNDRY 131  
1/4" = 1'-0"

SPECIFIC PLUMBING PLAN NOTES - P408

- 1 4" SAN. WASTE LINE--RE: 1/P101 FOR CONTINUATION.
- 2 3" SAN. WASTE LINE DOWN FROM FLOOR DRAIN.
- 3 3" SAN. WASTE LINE DOWN FROM FLOOR CLEANOUT.
- 4 4" SAN. WASTE LINE DOWN.
- 5 1/2" TRAP PRIMER LINES DOWN.
- 6 4" SAN. WASTE LINE DOWN FROM WATER CLOSET.
- 7 2" SAN. VENT LINE UP.
- 8 CAP 2" VENT LINE ON THIS SIDE OF LINT INTERCEPTOR.
- 9 LINT INTERCEPTOR--J.R. SMITH #8910-25-E-FC-VC 25 GPM LINT INTERCEPTOR WITH 2" VENT CONNECTIONS. EXTENSIONS TO FINISHED FLOOR AS REQUIRED. FLASHING FLANGE AND CLAMP. INSTALL PER THE MANUFACTURER'S PUBLISHED RECOMMENDATION. USE 8" OFFSET PIPING AT OUTLET FOR TRAP SEAL.
- 10 4" SAN. WASTE LINE DOWN FROM FLOOR DRAIN LOCATED IN TRENCH. (NO P-TRAP)--RE: DETAIL 3/P502.
- 11 1" C.W. AND 1" H.W. LINES DOWN FROM ABOVE CEILING.
- 12 3/4" H.W. LINE DOWN FROM ABOVE CEILING.
- 13 2 1/2" C.W. LINE DOWN FROM ABOVE CEILING.
- 14 4" SAN. WASTE DOWN AND 4" SAN. VENT UP TO ABOVE CEILING.
- 15 4" SAN. WASTE DOWN AND 4" SAN. VENT UP.
- 16 LINT INTERCEPTOR--RE: SPEC'S FOR ADDITIONAL INFORMATION.
- 17 CONNECT "H. & C.W. LINES TO WASHING MACHINE--PROVIDE 1" GATE VALVE, UNION AND SA-1 PRIOR TO EACH CONNECTION. CONNECT 3" DRAIN LINE AND 3" OVERFLOW DRAIN LINE TO WASHING MACHINE--DROP 3" DRAIN LINE AND 3" OVERFLOW INTO TRENCH--EXTEND 3" OVERFLOW DRAIN LINE TO 6" ABOVE TOP OF WASHING MACHINE AND TERMINATE WITH AN OPEN END OF PIPE. PROVIDE 4" FD-2 IN TRENCH BOTTOM (LESS P-TRAP) RE: ARCH. DRAWINGS FOR TRENCH DETAILS.
- 18 2 1/2" C.W. LINE--RE: 1/P101 FOR CONTINUATION.
- 19 3/4" H.W. LINE DOWN TO FLOOR BELOW.
- 20 4" SAN. VENTLINE--RE: 1/P101 FOR CONTINUATION.
- 21 2 1/2" H.W. LINE--RE: 1/P101 FOR CONTINUATION.
- 22 2" SAN. VENT LINE UP FROM FLOOR BELOW.
- 23 1" C.W. AND 1" H.W. LINES DOWN TO FLOOR BELOW.
- 24 4" SAN. VENT LINE UP FROM FLOOR BELOW.
- 25 1 1/4" C.W. LINE DOWN TO FLOOR BELOW.
- 26 RISE 1/2" C.W. LINE OFF TOP OF WATER MAIN.
- 27 DROP 1/2" C.W. INTO TOP OF TRAP SEAL PRIMER VALVE AND DISTRIBUTION UNIT - RE: SPEC'S. - PROVIDE ONE (1) VALVE AND DISTRIBUTION UNIT TO PROVIDE TRAP SEAL PROTECTION TO TWO (2) TRAPS - LOCATE VALVE AND DISTRIBUTION UNIT ABOVE CEILING LEVEL AND DROP TWO (2) 1/2" TRAP PRIMER LINES DOWN TO BELOW FLOOR.
- 28 2" SAN. VENT LINE UP--RE: 3/P408 FOR CONTINUATION.
- 29 CONNECT 1" LOW PRESSURE (7" WC) GAS LINE TO GAS DRYER
- 30 1" LOW PRESSURE (7" WC) GAS LINE UP--RE: 3/P408 FOR CONTINUATION.
- 31 1" LOW PRESSURE (7" WC) GAS LINE DOWN--RE: 2/P408 FOR CONTINUATION.
- 32 1" LOW PRESSURE (7" WC) GAS LINE--RE: 1/P101 FOR CONTINUATION.

Order Plans @ www.IDIline.com

SA&E PROJECT NUMBER	01-615-056
BID PACKAGE	BP-1
ISSUED FOR CONSTRUCTION	10/15/2019
<b>Southern AE</b> 7951 Tricon Circle Austell, Ga 30168 (770) 819-7777 architects & engineers	REVISIONS
	R # Doc # Date

FACILITY CODE NUMBER: 674-0110  
 GYMNASIUM/AUDITORIUM FOR:  
**HEARD COUNTY SCHOOLS**  
 545 MAIN STREET, FRANKLIN, GA 30217  
**HEARD COUNTY SCHOOL SYSTEM**  
 FRANKLIN, GEORGIA

ENLARGED PLUMBING FLOOR PLANS	DRAWING NUMBER
	P408