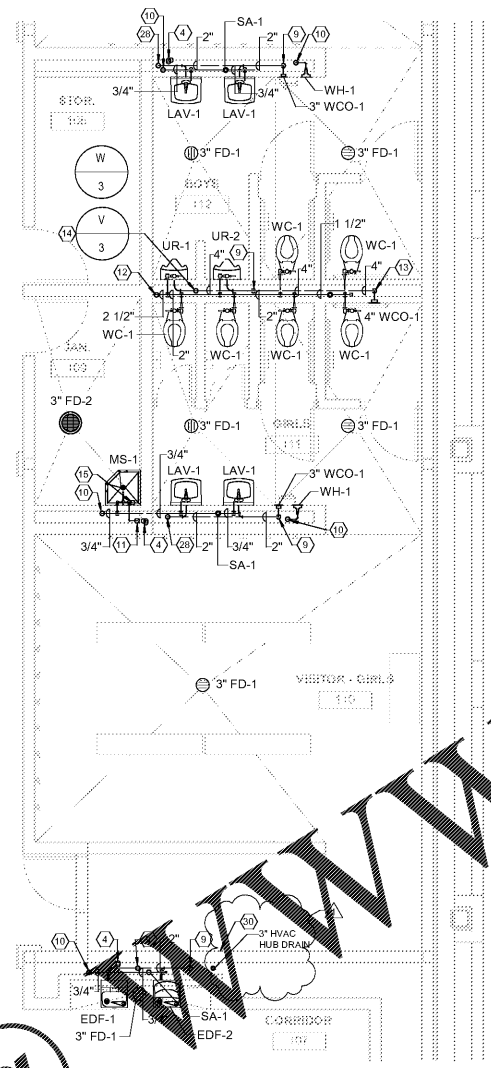
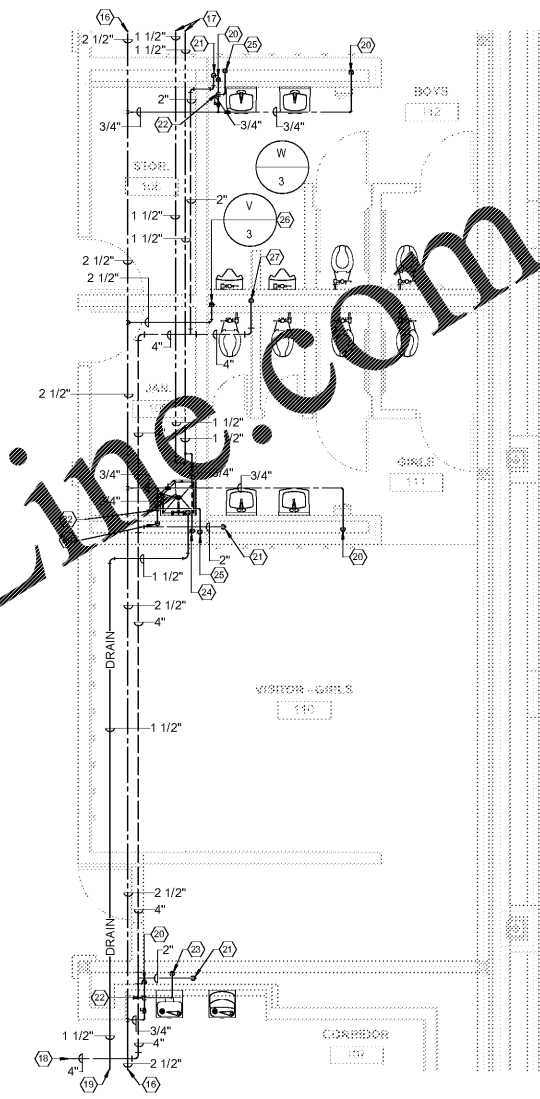


1 LEVEL 01 ENLARGED PLUMBING BELOW FLOOR PLAN - BOYS 112
1/4" = 1'-0"



2 LEVEL 01 ENLARGED PLUMBING ABOVE FLOOR PLAN - BOYS 112
1/4" = 1'-0"



3 LEVEL 01 ENLARGED PLUMBING ABOVE CEILING FLOOR PLAN - BOYS 112
1/4" = 1'-0"

SPECIFIC PLUMBING PLAN NOTES - P407

- 1 4" SAN. WASTE LINE-RE: 1/P101 FOR CONTINUATION.
- 2 3" SAN. WASTE LINE DOWN FROM FLOOR DRAIN.
- 3 3" SAN. WASTE LINE DOWN.
- 4 1/2" TRAP PRIMER LINES DOWN.
- 5 3" SAN. WASTE LINE DOWN FROM MOP SINK.
- 6 4" SAN. WASTE LINE DOWN FROM WATER CLOSET.
- 7 4" SAN. WASTE LINE DOWN.
- 8 1/2" TRAP PRIMER LINE-RE: 1/P101 FOR CONTINUATION.
- 9 3" SAN. WASTE DOWN AND 2" SAN. VENT UP.
- 10 3/4" C.W. LINE DOWN FROM ABOVE CEILING.
- 11 3/4" H.W. LINE DOWN FROM ABOVE CEILING.
- 12 2 1/2" C.W. LINE DOWN FROM ABOVE CEILING.
- 13 4" SAN. WASTE DOWN AND 4" SAN. VENT UP.
- 14 4" SAN. WASTE DOWN AND 4" SAN. VENT UP TO ABOVE CEILING.
- 15 1 1/2" TYPE "L" COPPER SUMP PUMP DISCHARGE DOWN WALL FROM ABOVE CEILING TO INDIRECT CONNECTION TO MOP SINK.
- 16 2 1/2" H.W. LINE-RE: 1/P101 FOR CONTINUATION.
- 17 1 1/2" C.W. LINE-RE: 1/P101 FOR CONTINUATION.
- 18 4" SAN. VENT LINE-RE: 1/P101 FOR CONTINUATION.
- 19 1 1/2" TYPE "L" COPPER SUMP PUMP DISCHARGE LINE-RE: 1/P101 FOR CONTINUATION.
- 20 3/4" C.W. LINE DOWN TO FLOOR BELOW.
- 21 2" SAN. VENT LINE UP FROM FLOOR BELOW.
- 22 RISE 1/2" W. LINE OFF TOP OF WATER MAIN.
- 23 DROP 1/2" INTO TOP OF TRAP SEAL PRIMER VALVE AND DISTRIBUTION UNIT - RE: SPEC'S. - PROVIDE ONE (1) VALVE AND DISTRIBUTION UNIT TO PROVIDE TRAP SEAL PROTECTION TO TWO (2) TRAPS - LOCATE VALVE AND DISTRIBUTION UNIT ABOVE CEILING LEVEL AND DROP TWO (2) 1/2" TRAP PRIMER LINES DOWN TO BELOW FLOOR.
- 24 3/4" C.W. LINE DOWN TO FLOOR BELOW.
- 25 DROP 1/2" C.W. INTO TOP OF TRAP SEAL PRIMER VALVE AND DISTRIBUTION UNIT - RE: SPEC'S. - PROVIDE ONE (1) VALVE AND DISTRIBUTION UNIT TO PROVIDE TRAP SEAL PROTECTION TO THREE (3) TRAPS - LOCATE VALVE AND DISTRIBUTION UNIT ABOVE CEILING LEVEL AND DROP THREE (3) 1/2" TRAP PRIMER LINES DOWN TO BELOW FLOOR.
- 26 2 1/2" C.W. LINE DOWN TO FLOOR BELOW.
- 27 4" SAN. VENT LINE UP FROM FLOOR BELOW.
- 28 3" SAN. WASTE DOWN AND 2" SAN. VENT UP TO ABOVE CEILING.
- 29 3" SAN. WASTE LINE DOWN FROM CONDENSATE DRAIN.
- 30 RETURN AIR GRILLE SECURED TO CHASE WALL - RE: DETAIL 11/P502 AND HVAC DRAWINGS.

Order Plans @

WWW.LDILINE.COM

SA&E PROJECT NUMBER	01-615-056	
BID PACKAGE	BP-1	
ISSUED FOR CONSTRUCTION	10/15/2019	
REVISIONS		
R #	Doc #	Date
1	AD1	11.4.2019

FACILITY CODE NUMBER: 674-0110
GYMNASIUM/AUDITORIUM FOR:
HEARD COUNTY SCHOOLS
 545 MAIN STREET, FRANKLIN, GA 30217
HEARD COUNTY SCHOOL SYSTEM
 FRANKLIN, GEORGIA

ENLARGED PLUMBING FLOOR PLANS

DRAWING NUMBER
P407