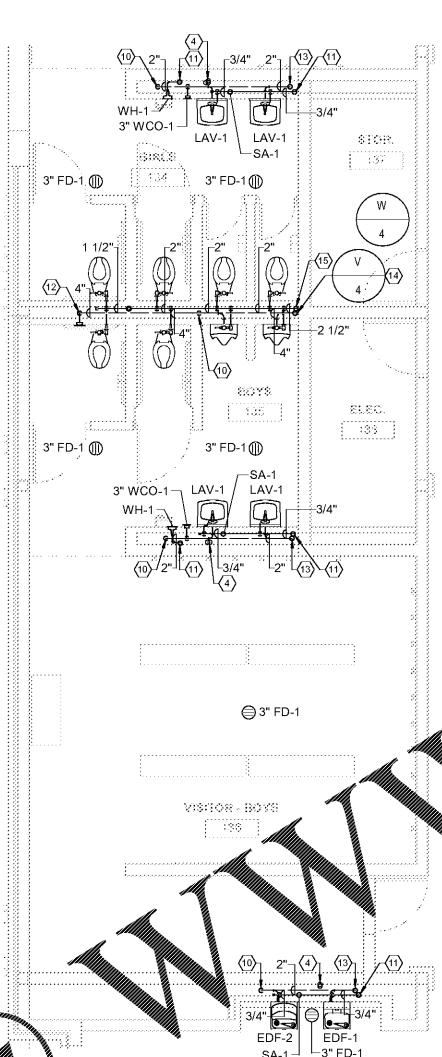
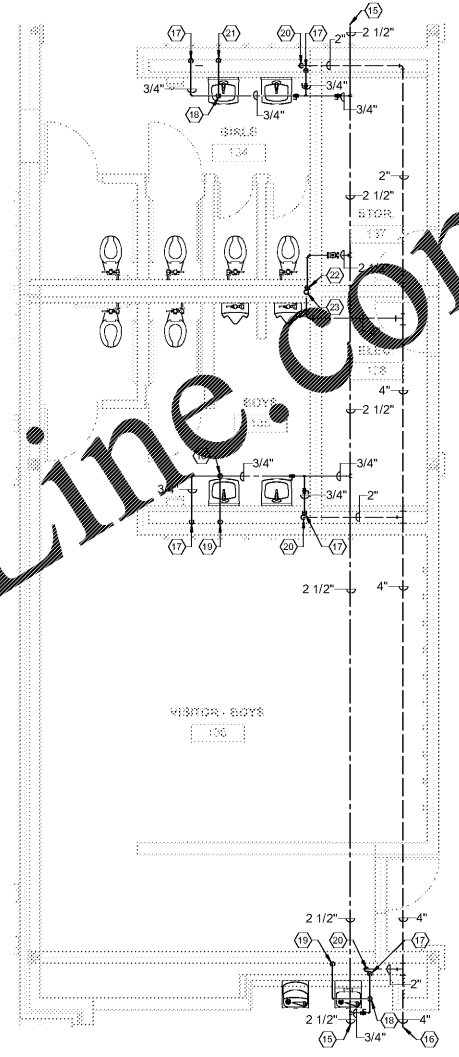


1 LEVEL 01 ENLARGED PLUMBING BELOW FLOOR PLAN - BOYS 135
1/4" = 1'-0"



2 LEVEL 01 ENLARGED PLUMBING ABOVE FLOOR PLAN - BOYS 135
1/4" = 1'-0"




3 LEVEL 01 ENLARGED PLUMBING ABOVE CEILING PLAN - BOYS 135
1/4" = 1'-0"

SPECIFIC PLUMBING PLAN NOTES - P405

- 1 4" SAN. WASTE LINE-RE: 1/P101 FOR CONTINUATION.
- 2 3" SAN. WASTE LINE DOWN FROM FLOOR DRAIN.
- 3 3" SAN. WASTE LINE DOWN.
- 4 1/2" TRAP PRIMER LINES DOWN.
- 5 3" SAN. WASTE LINE-RE: 1/P101 FOR CONTINUATION.
- 6 2" SAN. VENT LINE UP.
- 7 4" SAN. WASTE LINE DOWN.
- 8 2" SAN. VENT LINE-RE: 1/P101 FOR CONTINUATION.
- 9 1/2" TRAP PRIMER LINE-RE: 1/P101 FOR CONTINUATION.
- 10 3" SAN. WASTE DOWN AND 2" SAN. VENT UP.
- 11 3/4" C.W. LINE DOWN FROM ABOVE CEILING.
- 12 4" SAN. WASTE DOWN AND 4" SAN. VENT UP TO ABOVE CEILING.
- 13 3" SAN. WASTE DOWN AND 2" SAN. VENT UP TO ABOVE CEILING.
- 14 4" SAN. WASTE DOWN AND 4" SAN. VENT UP TO ABOVE CEILING.
- 15 2 1/2" H.W. LINE-RE: 1/P101 FOR CONTINUATION.
- 16 4" SAN. VENT LINE-RE: 1/P101 FOR CONTINUATION.
- 17 3/4" C.W. LINE DOWN TO FLOOR BELOW.
- 18 RISE 1/2" C.W. LINE ON TOP OF WATER MAIN.
- 19 DROP 1/2" C.W. INTO TOP OF TRAP SEAL PRIMER VALVE AND DISTRIBUTION UNIT - RE: SPEC'S. - PROVIDE ONE (1) VALVE AND DISTRIBUTION UNIT TO PROVIDE TRAP SEAL PROTECTION TO TWO (2) TRAPS - LOCATE VALVE AND DISTRIBUTION UNIT ABOVE CEILING LEVEL AND DROP TWO (2) 1/2" TRAP PRIMER LINES DOWN TO BELOW FLOOR.
- 20 2" SAN. VENT LINE UP FROM FLOOR BELOW.
- 21 DROP 1/2" C.W. INTO TOP OF TRAP SEAL PRIMER VALVE AND DISTRIBUTION UNIT - RE: SPEC'S. - PROVIDE ONE (1) VALVE AND DISTRIBUTION UNIT TO PROVIDE TRAP SEAL PROTECTION TO THREE (3) TRAPS - LOCATE VALVE AND DISTRIBUTION UNIT ABOVE CEILING LEVEL AND DROP THREE (3) 1/2" TRAP PRIMER LINES DOWN TO BELOW FLOOR.
- 22 2 1/2" C.W. LINE DOWN TO FLOOR BELOW.
- 23 4" SAN. VENT LINE UP FROM FLOOR BELOW.
- 24 4" SAN. WASTE LINE DOWN FROM WATER CLOSET.

Order Plans @

WWW.LDILine.com

SA&E PROJECT NUMBER	01-615-056
BID PACKAGE	BP-1
ISSUED FOR CONSTRUCTION	10/15/2019
Southern AE 7951 Truon Circle Austell, Ga 30168 (770) 819-7777 architects & engineers	REVISIONS
	R # Doc # Date
FACILITY CODE NUMBER: 674-0110 HEARD COUNTY SCHOOLS 545 MAIN STREET, FRANKLIN, GA 30217 HEARD COUNTY SCHOOL SYSTEM FRANKLIN, GEORGIA	
ENLARGED PLUMBING FLOOR PLANS	
	DRAWING NUMBER P405