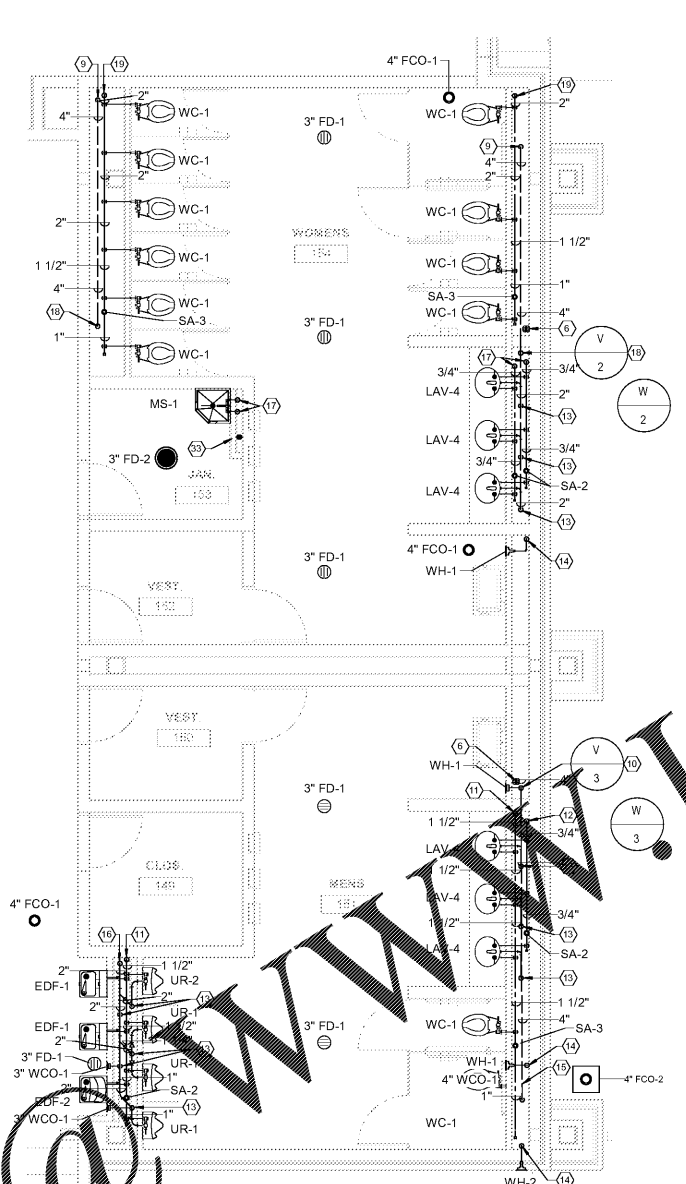
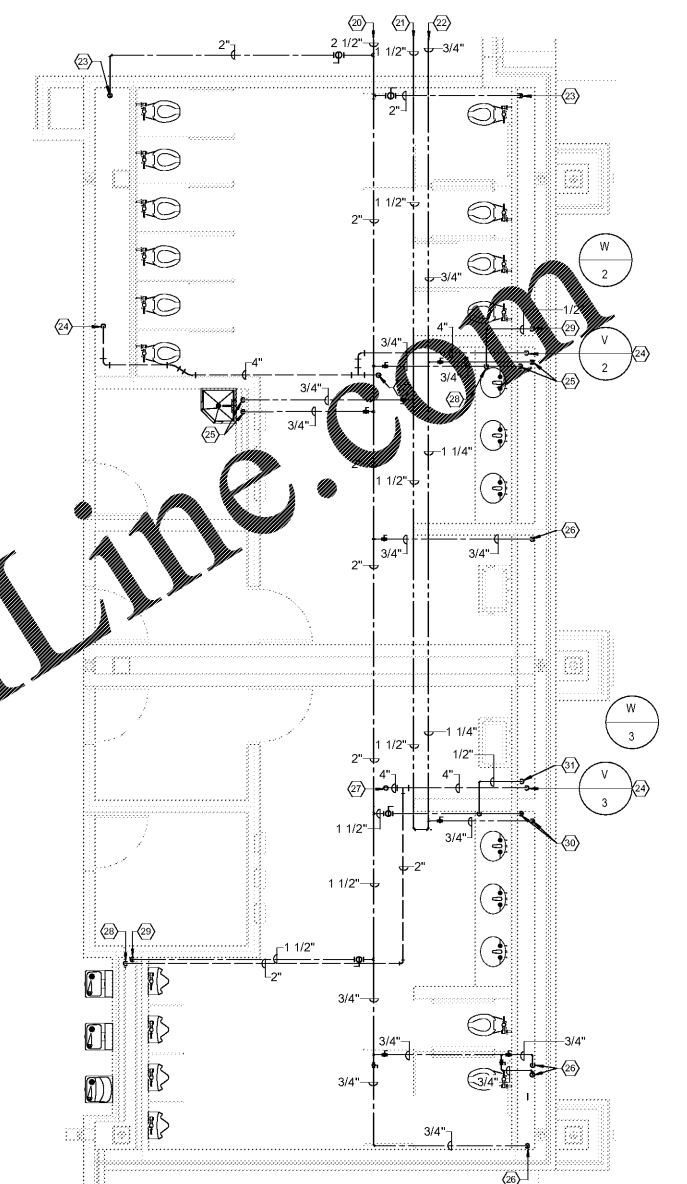


1 LEVEL 01 ENLARGED PLUMBING BELOW FLOOR PLAN - TOILET #2
1/4" = 1'-0"



2 LEVEL 01 ENLARGED PLUMBING ABOVE FLOOR PLAN - TOILET #2
1/4" = 1'-0"




3 LEVEL 01 ENLARGED PLUMBING ABOVE CEILING PLAN - TOILET #2
1/4" = 1'-0"

SPECIFIC PLUMBING PLAN NOTES - P404

- 1 4" SAN. WASTE LINE-RE: 1/P103 FOR CONTINUATION.
- 2 3" SAN. WASTE LINE DOWN FROM FLOOR DRAIN.
- 3 4" SAN. WASTE LINE DOWN FROM WATER CLOSET.
- 4 4" WASTE LINE DOWN FROM FLOOR CLEANOUT.
- 5 3" SAN. WASTE LINE DOWN.
- 6 1/2" TRAP PRIMER LINES DOWN.
- 7 4" SAN. WASTE LINE DOWN FROM FLOOR CLEANOUT.
- 8 4" SAN. VENT LINE UP.
- 9 4" SAN. WASTE DOWN AND 4" SAN. VENT UP TO ABOVE CEILING.
- 10 1 1/2" C.W. LINE DOWN FROM ABOVE CEILING.
- 11 3/4" H.W. LINE DOWN FROM ABOVE CEILING.
- 12 3" SAN. WASTE DOWN AND 2" SAN. VENT UP TO ABOVE CEILING.
- 13 3/4" C.W. LINE DOWN FROM ABOVE CEILING.
- 14 4" SAN. WASTE DOWN AND 4" SAN. VENT UP TO ABOVE CEILING.
- 15 3" SAN. WASTE DOWN AND 2" SAN. VENT UP TO ABOVE CEILING.
- 16 3" C.W. AND 1" H.W. LINES DOWN FROM ABOVE CEILING.
- 17 SAN. VENT UP TO ABOVE CEILING.
- 18 C.W. LINE DOWN FROM ABOVE CEILING.
- 19 1/2" C.W. LINE-RE: 1/P103 FOR CONTINUATION.
- 20 2" H.W. LINE-RE: 1/P103 FOR CONTINUATION.
- 21 3" H.W. LINE-RE: 1/P103 FOR CONTINUATION.
- 22 3" H.W. LINE-RE: 1/P103 FOR CONTINUATION.
- 23 2" C.W. LINE DOWN TO FLOOR BELOW.
- 24 4" SAN. VENT LINE UP FROM FLOOR BELOW.
- 25 3/4" C.W. AND 3/4" H.W. LINES DOWN TO FLOOR BELOW.
- 26 3/4" C.W. LINE DOWN TO FLOOR BELOW.
- 27 4" SAN. VENT LINE UP TO 4" V.T.R.
- 28 2" SAN. VENT LINE UP FROM FLOOR BELOW.
- 29 1 1/2" C.W. LINE DOWN TO FLOOR BELOW.
- 30 1 1/2" C.W. AND 3/4" H.W. LINES DOWN TO FLOOR BELOW.
- 31 DROP 1/2" C.W. INTO TOP OF TRAP SEAL PRIMER VALVE AND DISTRIBUTION UNIT - RE: SPEC'S. - PROVIDE ONE (1) VALVE AND DISTRIBUTION UNIT TO PROVIDE TRAP SEAL PROTECTION TO THREE (3) TRAPS - LOCATE VALVE AND DISTRIBUTION UNIT ABOVE CEILING LEVEL AND DROP THREE (3) 1/2" TRAP PRIMER LINES DOWN TO BELOW FLOOR.
- 32 3" WASTE LINE DOWN FROM HUB DRAIN.
- 33 RETURN AIR GRILLE SECURED TO CHASE WALL - RE: DETAIL 11/P502 AND HVAC DRAWINGS.

Order Plans

SA&E PROJECT NUMBER	01-615-056
BID PACKAGE	BP-1
ISSUED FOR CONSTRUCTION	10/15/2019
Southern AE 7951 Tricon Circle Austell, Ga 30168 (770) 519-7777 architects & engineers	REVISIONS
	R # Doc # Date
FACILITY CODE NUMBER: 674-0110 GYMNASIUM/AUDITORIUM FOR: HEARD COUNTY SCHOOLS 545 MAIN STREET, FRANKLIN, GA 30217 HEARD COUNTY SCHOOL SYSTEM FRANKLIN, GEORGIA	
ENLARGED PLUMBING FLOOR PLANS	
	DRAWING NUMBER P404