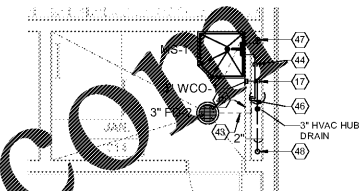
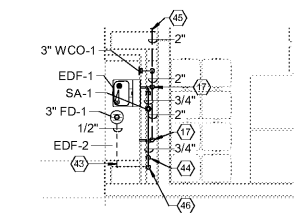
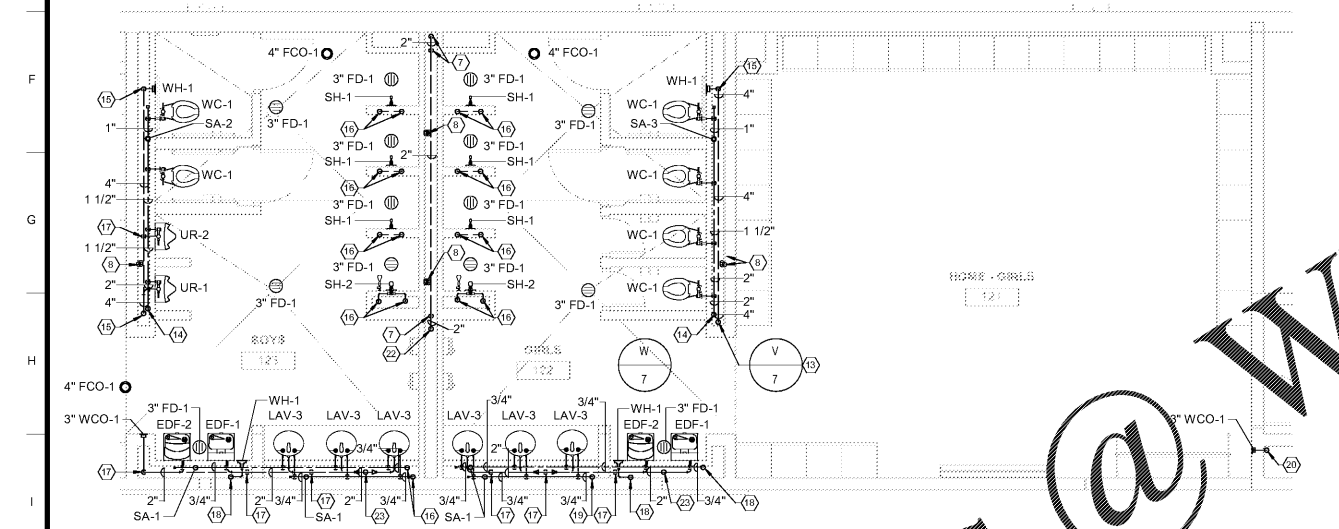


4 LEVEL 02 ENLARGED PLUMBING ABOVE FLOOR PLAN - DF  
1/4" = 1'-0"

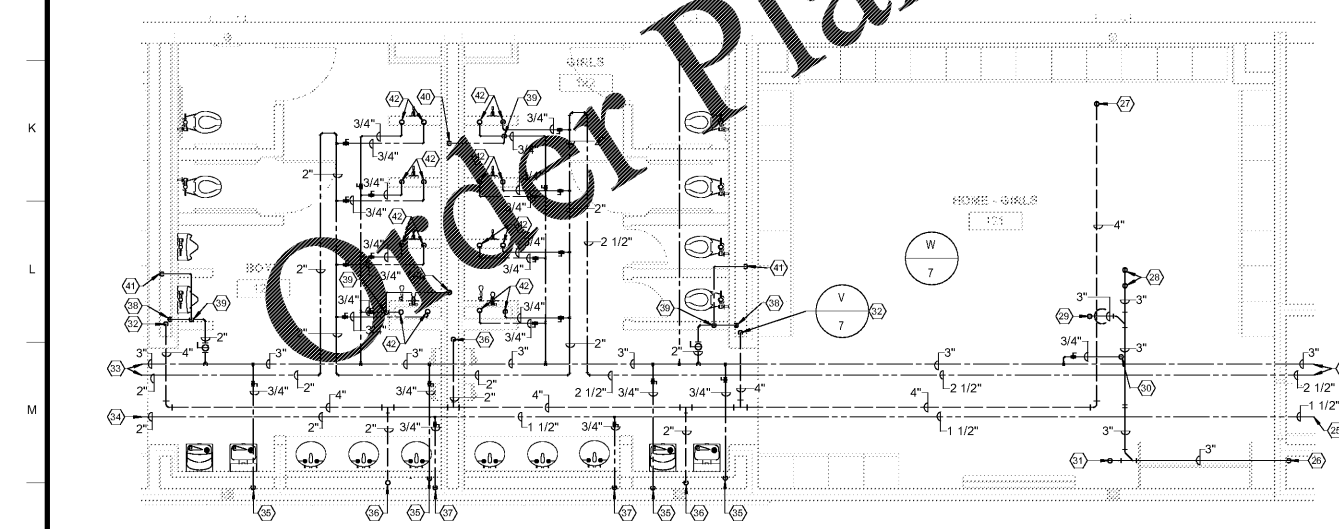


5 LEVEL 02 ENLARGED PLUMBING ABOVE FLOOR PLAN - JAN. 212  
1/4" = 1'-0"

1 LEVEL 01 ENLARGED PLUMBING BELOW FLOOR PLAN HOME - GIRLS 121  
1/4" = 1'-0"



2 LEVEL 01 ENLARGED PLUMBING ABOVE FLOOR PLAN HOME - GIRLS 121  
1/4" = 1'-0"



3 LEVEL 01 ENLARGED PLUMBING ABOVE CEILING PLAN HOME - GIRLS 121  
1/4" = 1'-0"

SPECIFIC PLUMBING PLAN NOTES - P402

- 1 SAN. WASTE LINE-RE: 1/P101 FOR CONTINUATION.
- 2 3" SAN. WASTE LINE DOWN TO FLOOR ABOVE.
- 3 3" SAN. WASTE LINE DOWN FROM FLOOR DRAIN.
- 4 4" SAN. WASTE LINE DOWN FROM WATER CLOSET.
- 5 4" SAN. WASTE LINE DOWN.
- 6 4" SAN. VENT LINE UP.
- 7 2" SAN. VENT LINE UP.
- 8 1/2" TRAP PRIMER LINES DOWN.
- 9 4" SAN. WASTE LINE DOWN FROM FLOOR CLEANOUT.
- 10 RISE 2" VENT LINE OFF TOP OF MAIN.
- 11 1/2" TRAP PRIMER LINE BELOW GRADE.
- 12 4" SAN. WASTE LINE BELOW GRADE.
- 13 4" SAN. WASTE DOWN AND 4" SAN. VENT UP TO ABOVE CEILING.
- 14 2" C.W. LINE DOWN FROM ABOVE CEILING.
- 15 4" SAN. WASTE DOWN AND 4" SAN. VENT UP.
- 16 3/4" C.W. AND 3/4" H.W. LINE DOWN FROM ABOVE CEILING.
- 17 3" SAN. WASTE DOWN AND 2" SAN. VENT UP.
- 18 3/4" C.W. LINE DOWN FROM ABOVE CEILING.
- 19 3/4" H.W. LINE DOWN FROM ABOVE CEILING.
- 20 3" SAN. WASTE DOWN FROM FLOOR ABOVE.
- 21 2" SAN. VENT LINE UP TO ABOVE CEILING.
- 22 3" SAN. WASTE DOWN AND 2" SAN. VENT UP TO ABOVE CEILING.
- 23 3" C.W. AND 2 1/2" H.W. LINES-RE: 1/P101 FOR CONTINUATION.
- 24 1 1/2" H.W. LINE-RE: 1/P101 FOR CONTINUATION.
- 25 3" SAN. WASTE LINE DOWN TO FLOOR BELOW.
- 26 4" SAN. VENT LINE UP FROM FLOOR BELOW UP TO ABOVE CEILING.
- 27 3" SAN. WASTE DOWN AT FLOOR ABOVE.
- 28 3" SAN. WASTE DOWN FROM FLOOR DRAIN AT FLOOR ABOVE.
- 29 3/4" C.W. LINE UP TO FLOOR ABOVE.
- 30 4" SAN. WASTE DOWN FROM FLOOR CLEANOUT AT FLOOR ABOVE.
- 31 4" SAN. VENT LINE UP FROM FLOOR BELOW.
- 32 3" C.W. AND 2" H.W. LINES-RE: 1/P101 FOR CONTINUATION.
- 33 2" H.W. LINE-RE: 1/P101 FOR CONTINUATION.
- 34 3/4" C.W. LINE DOWN TO FLOOR BELOW.
- 35 2" SAN. VENT LINE UP FROM FLOOR BELOW.
- 36 3/4" H.W. LINE DOWN TO FLOOR BELOW.
- 37 2" C.W. LINE DOWN TO FLOOR BELOW.
- 38 RISE 1/2" C.W. LINE OFF TOP OF WATER MAIN.
- 39 DROP 1/2" C.W. INTO TOP OF TRAP SEAL PRIMER VALVE AND DISTRIBUTION UNIT - RE: SPEC'S. - PROVIDE ONE (1) VALVE AND DISTRIBUTION UNIT TO PROVIDE TRAP SEAL PROTECTION TO FOUR (4) TRAPS - LOCATE VALVE AND DISTRIBUTION UNIT ABOVE CEILING LEVEL AND DROP FOUR (4) 1/2" TRAP PRIMER LINES DOWN TO BELOW FLOOR.
- 40 DROP 1/2" C.W. INTO TOP OF TRAP SEAL PRIMER VALVE AND DISTRIBUTION UNIT - RE: SPEC'S. - PROVIDE ONE (1) VALVE AND DISTRIBUTION UNIT TO PROVIDE TRAP SEAL PROTECTION TO THREE (3) TRAPS - LOCATE VALVE AND DISTRIBUTION UNIT ABOVE CEILING LEVEL AND DROP FOUR (4) 1/2" TRAP PRIMER LINES DOWN TO BELOW FLOOR.
- 41 3/4" C.W. AND 3/4" LINES DOWN TO FLOOR BELOW.
- 42 1/2" TRAP PRIMER LINE BELOW FLOOR.
- 43 3/4" C.W. LINE UP FROM BELOW FLOOR-EXTEND 1/2" C.W. LINE UP TO ABOVE CEILING.
- 44 2" SAN. VENT LINE-RE: 1/P102 FOR CONTINUATION.
- 45 DROP 1/2" C.W. INTO TOP OF TRAP SEAL PRIMER VALVE. ROUTE TRAP PRIMER LINE DOWN IN CHASE TO BELOW FLOOR THEN TO FLOOR DRAIN - RE: SPEC'S.
- 46 3/4" H.W. LINE UP FROM FLOOR BELOW.
- 47 4" SAN. VENT LINE UP FROM FLOOR BELOW UP TO 4" V.T.R.
- 48 RETURN AIR GRILLE SECURED TO CHASE WALL - RE: DETAIL 11/P502 AND HVAC DRAWINGS.
- 49

Order Plans @ WWW.DILine.com

SA&E PROJECT NUMBER	01-615-056
BID PACKAGE	BP-1
ISSUED FOR CONSTRUCTION	10/15/2019
REVISIONS	
R #	Doc #
Date	Date
1	AD1
11.4.2019	11.4.2019
7951 Traxon Circle Austell, Ga 30168 (770) 819-7777 architects & engineers	
FACILITY CODE NUMBER: 674-0110 GYMNASIUM/AUDITORIUM FOR: <b>HEARD COUNTY SCHOOLS</b> 545 MAIN STREET, FRANKLIN, GA 30217 <b>HEARD COUNTY SCHOOL SYSTEM</b> FRANKLIN, GEORGIA	
ENLARGED PLUMBING FLOOR PLANS	
DRAWING NUMBER	P402