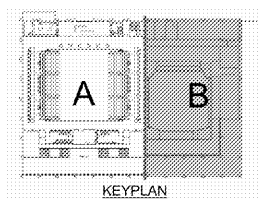
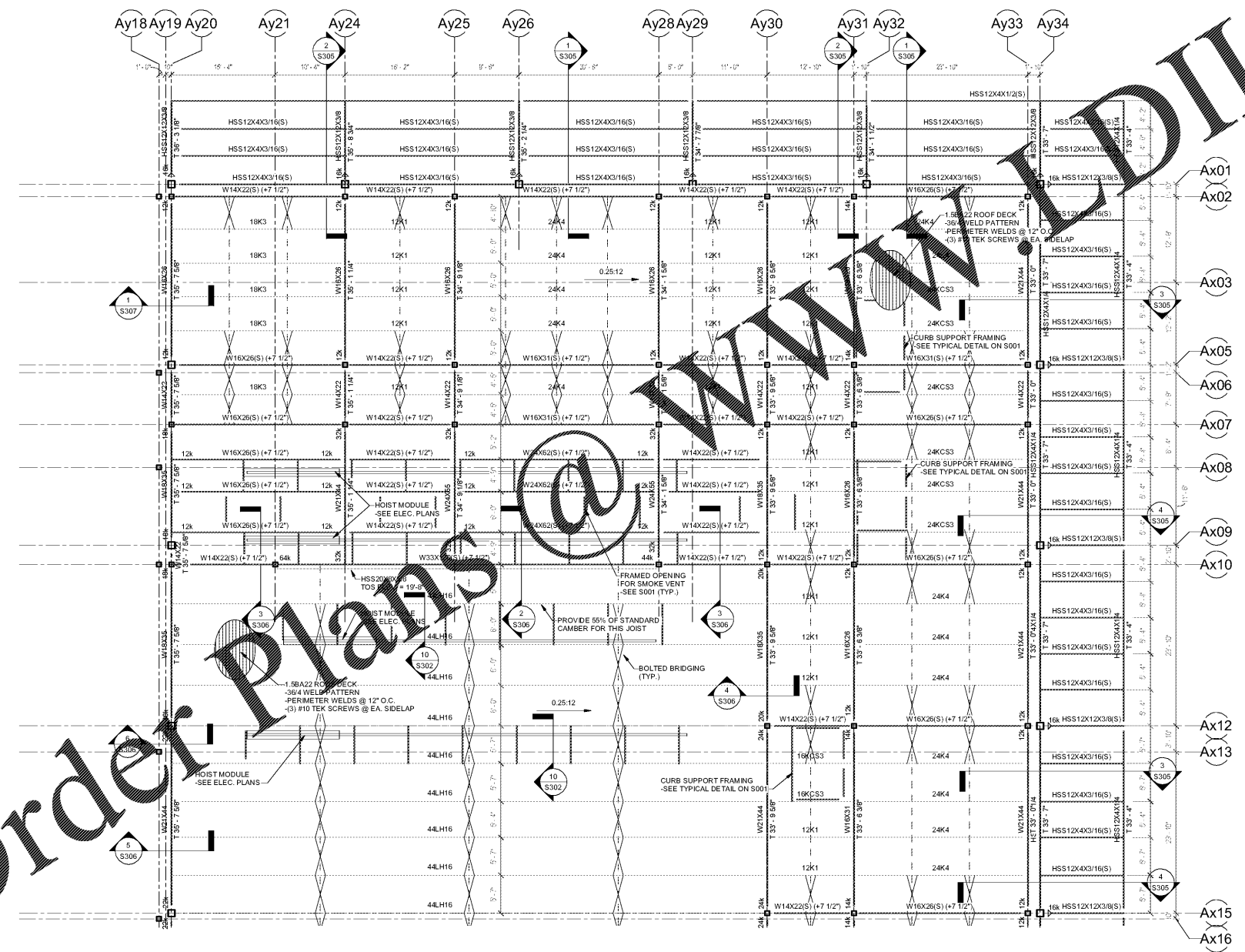


A  
B  
C  
D  
E  
F  
G  
H  
I  
A  
K  
L  
M  
N

- ROOF FRAMING NOTES**
- SEE THE FOUNDATION PLAN FOR COLUMN SIZES.
  - TOP OF STEEL ELEVATION IS MEASURED IN RELATION TO THE BUILDING FINISHED FLOOR ELEVATION 0'-0".
  - DESIGN BEAM SHEAR CONNECTIONS FOR (ASD) REACTIONS SHOWN ON THE PLAN, AND PROVIDE THE MINIMUM BOLTED CONNECTION AS SHOWN ON SD01 ON THE BEAM & COLUMN CONNECTION DETAIL WHERE NO REACTION IS SHOWN. DESIGN THE CONNECTION FOR NO LESS THAN 10 KIPS.
  - SEE SHEET S001 FOR THE FOLLOWING:
    - BEAM & PLATE Lintel SCHEDULE
    - GENERAL NOTES
    - ROOF OPENING & MECHANICAL SUPPORT DETAILS
    - STANDARD BEAM/COLUMN CONNECTIONS
    - STANDARD Lintel SCHEDULE
    - STEEL DECK ATTACHMENT DETAIL
  - BEAM SPLICE POINTS NOT DIMENSIONED ON THE PLANS ARE TO BE LOCATED 3'-0" FROM THE COLUMN LINE, TYPICAL.
  - SEE S002 FOR SPECIAL JOIST LOAD DIAGRAMS. ALL ROOF JOISTS DESIGNATED 80LX20.5PXX ARE SPECIAL JOISTS.
  - ALL JOIST SEATS ARE TO BE 7'-11/2"
- ROOF FRAMING LEGEND**
- ◆ Lintel MINIMUM BEARING 0'-8" AND FILL CELLS WITH GROUT CONTIGUOUS TO FOOTING
  - ◆ Lintel MINIMUM BEARING 1'-4" AND FILL CELLS WITH GROUT CONTIGUOUS TO FOOTING
  - ⊗ 05 12 00, X-BRIDGING FOR JOISTS (REFER TO DETAILS FOR ANGLE 9/22)
  - 05 21 00, STANDARD BRIDGING FOR JOISTS
  - || BEAM SHEAR SPLICE
  - BEAM MOMENT CONNECTION - SEE TYPICAL DETAILS ON S001
  - (B) BEAM BELOW
  - 1'-11" BEAM AND PLATE Lintel, SEE SCHEDULE ON S001
  - SLOPING BEAM - TOP OF STEEL SHALL MATCH DECK BEARING, UNLESS DETAILED OTHERWISE
  - SM\* SIMILAR DETAIL
  - T\* TOP OF STEEL
  - 11K\* (ASD) BEAM SHEAR REACTION IN KIPS
  - (SWB) SHEAR WALL BELOW - SEE S002 FOR BEAM ANCHORAGE TO WALL
  - (DB) DRAG STRUT - SEE S002 FOR TYPICAL CONNECTIONS

Order Plans @ [www.AEOnline.com](http://www.AEOnline.com)



**AUDITORIUM ROOF - Part 1**  
1/8" = 1'-0"

SA&E PROJECT NUMBER	01-615-056
BID PACKAGE	BP-1
ISSUED FOR CONSTRUCTION	10/15/2019
<b>Southern AE</b> 7951 Traxon Circle Austell, Ga 30168 (770) 519-7777 architects & engineers	REVISIONS
	R # Doc # Date

FACILITY CODE NUMBER: 674-0110  
**GYMNASIUM/AUDITORIUM FOR:**  
**HEARD COUNTY SCHOOLS**  
 545 MAIN STREET, FRANKLIN, GA 30217  
**HEARD COUNTY SCHOOL SYSTEM**  
 FRANKLIN, GEORGIA

AUDITORIUM ROOF FRAMING PLAN - Plan 1

		DRAWING NUMBER
		<b>S111</b>