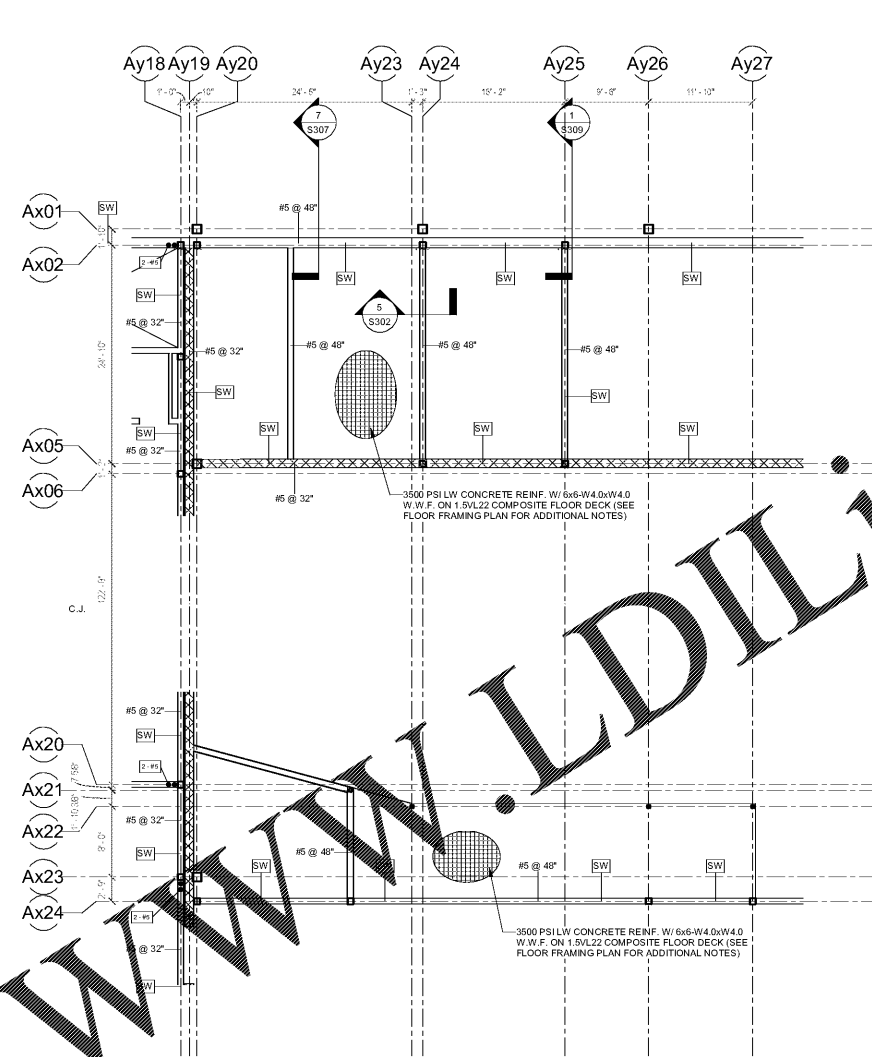
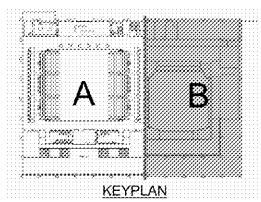


A
B
C
D
E
F
G
H
I
A
K
L
M
N



- UPPER FLOOR REINFORCING NOTES**
- SEE THE FOUNDATION PLAN FOR COLUMN SIZES.
 - ALL REINFORCED WALLS MUST BE REINFORCED AS SHOWN IN DETAIL 116301.
 - SEE SHEET 8001 FOR THE FOLLOWING:
 - GENERAL NOTES
 - STANDARD LINTEL SCHEDULE
 - SEE DETAIL 16302 FOR THE SLAB CONSTRUCTION JOINT ON FRAMED FLOOR DETAIL.
- UPPER FLOOR REINFORCING LEGEND**
- BOND BEAM @ 48" O.C. WITH #5 REBAR
 - VERTICAL #5 REBAR @ 48" O.C.
 - VERTICAL #5 REBAR @ 18" O.C.
 - QUANTITY & SIZE OF VERTICAL BARS REQUIRED ADJACENT TO THE COLUMN OR WALL OPENING.
 - SW SHEAR WALL
 - SMILAR DETAIL
 - SPOT ELEVATION
 - SLAB DEPRESSION PATTERN
 - SLAB DEPRESSION SYMBOL WITH DEPRESSION DIMENSION

AUDITORIUM 2ND FLOOR REINFORCING PLAN
1/8" = 1'-0"



Order Plans @ www.LDILine.com

SA&E PROJECT NUMBER	01-615-056
BID PACKAGE	BP-1
ISSUED FOR CONSTRUCTION	10/15/2019
Southern AE 7951 Tricon Circle Austell, Ga 30168 (770) 819-7777 LLC architects & engineers	REVISIONS R # Doc # Date
	FACILITY CODE NUMBER: 674-0110 GYMNASIUM/AUDITORIUM FOR: HEARD COUNTY SCHOOLS 545 MAIN STREET, FRANKLIN, GA 30217 HEARD COUNTY SCHOOL SYSTEM FRANKLIN, GEORGIA
AUDITORIUM 2ND FLOOR REINFORCING PLAN	
STATE OF GEORGIA REGISTERED ARCHITECT	DRAWING NUMBER S108