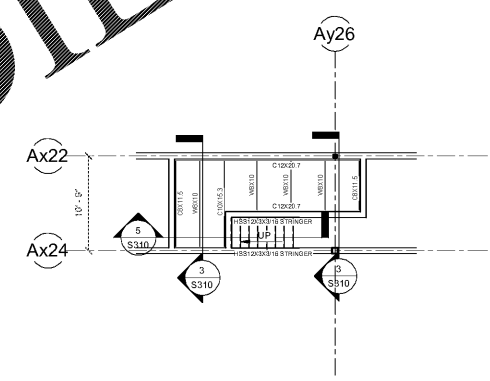
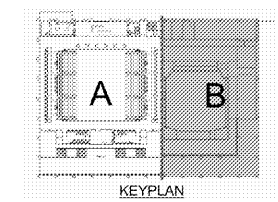


- FLOOR FRAMING NOTES**
- SEE THE FOUNDATION PLAN FOR COLUMN SIZES.
  - TOP OF STEEL ELEVATION IS MEASURED IN RELATION TO THE BUILDING FINISHED FLOOR ELEVATION.
  - DESIGN BEAM SHEAR CONNECTIONS FOR (ASD) REACTIONS SHOWN ON PLAN AND PROVIDE MINIMUM BOLTED CONNECTION AS SHOWN ON S001 BEAM & COLUMN CONNECTION DETAIL. WHERE NO REACTIONS ARE SHOWN DESIGN CONNECTION FOR NO LESS THAN 10KIPS.
  - MOST STEEL FLOOR BEAMS ARE TO BE COMPOSITE WITH CONCRETE SLAB. PROVIDE 3/4" DIA. x 3" WELDED, HEADED STUDS AS INDICATED BY (E) AFTER BEAM SIZE. STUDS SHALL BE EQUALLY SPACED ALONG LENGTH OF MEMBER.
  - DO NOT PRIME PAINT TOP OF THE FLANGE OF FLOOR BEAMS.
  - FLOOR SLAB IS TO BE 4" LIGHT WEIGHT CONCRETE REINFORCED WITH #6-W4-W4 WELDED WIRE FABRIC SUPPORTED BY 1.5VJ2 COMPOSITE FLOOR DECK. WELD DECK TO ALL SUPPORTS USING A 3/8" WELD PATTERN. IN ADDITION, ATTACH DECK TOGETHER 2 TIMES AT ALL S DELAYS WITH A #10 TEK SCREW (AS WELL AS TO ANY DECK EDGE SUPPORTS).
  - THIS FRAMED FLOOR SLAB HAS BEEN DESIGNED TO SUPPORT A SCISSOR LIFT WITH A MAXIMUM DOWNED WEIGHT + LIFT CAPACITY OF 6000#. SCISSOR LIFTS EXCEEDING THIS CAPACITY ARE PROHIBITED FROM BEING USED ON THIS FRAMED FLOOR.
  - SEE SHEET S001 FOR THE FOLLOWING:
    - BSM & PLATE LINTEL SCHEDULE
    - GENERAL NOTES
    - STANDARD BEAM/COLUMN CONNECTIONS
    - STEEL DECK ATTACHMENT DETAIL
- FLOOR FRAMING LEGEND**
- BEAM MOMENT CONNECTION - SEE TYPICAL DETAIL ON S001
  - LINTEL MINIMUM BEARING 0'-4" AND FILL CELLS WITH GROUT CONTINUOUS TO FOOTING
  - LINTEL MINIMUM BEARING 1'-4" AND FILL CELLS WITH GROUT CONTINUOUS TO FOOTING
  - BEAM BELOW
  - BEAM AND PLATE LINTEL, SEE SCHEDULE ON S001
  - SIM SIMILAR DETAIL
  - TOP OF STEEL
  - (ASD) BEAM SHEAR REACTION IN KIPS



**AUDITORIUM CONTROL ROOM FRAMING PLAN**  
1/8" = 1'-0" T.O.S. = 3'-8" UNLESS NOTED OTHERWISE



Order Plans @ www.LDILine.com

**AUDITORIUM FLOOR FRAMING PLAN**  
1/8" = 1'-0" T.O.S. = 15'-0" UNLESS NOTED OTHERWISE

SA&E PROJECT NUMBER	01-615-056
BID PACKAGE	BP-1
ISSUED FOR CONSTRUCTION	10/15/2019
<b>Southern AE</b>	
7951 Truon Circle Austell, Ga 30168 (770) 819-7777 architects & engineers	
FACILITY CODE NUMBER: 674-0110 GYMNASIUM/AUDITORIUM FOR: <b>HEARD COUNTY SCHOOLS</b>	
545 MAIN STREET, FRANKLIN, GA 30217 <b>HEARD COUNTY SCHOOL SYSTEM</b> FRANKLIN, GEORGIA	
<b>AUDITORIUM FLOOR FRAMING PLAN</b>	
DRAWING NUMBER	
S106	