

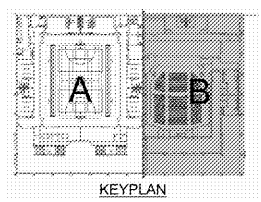
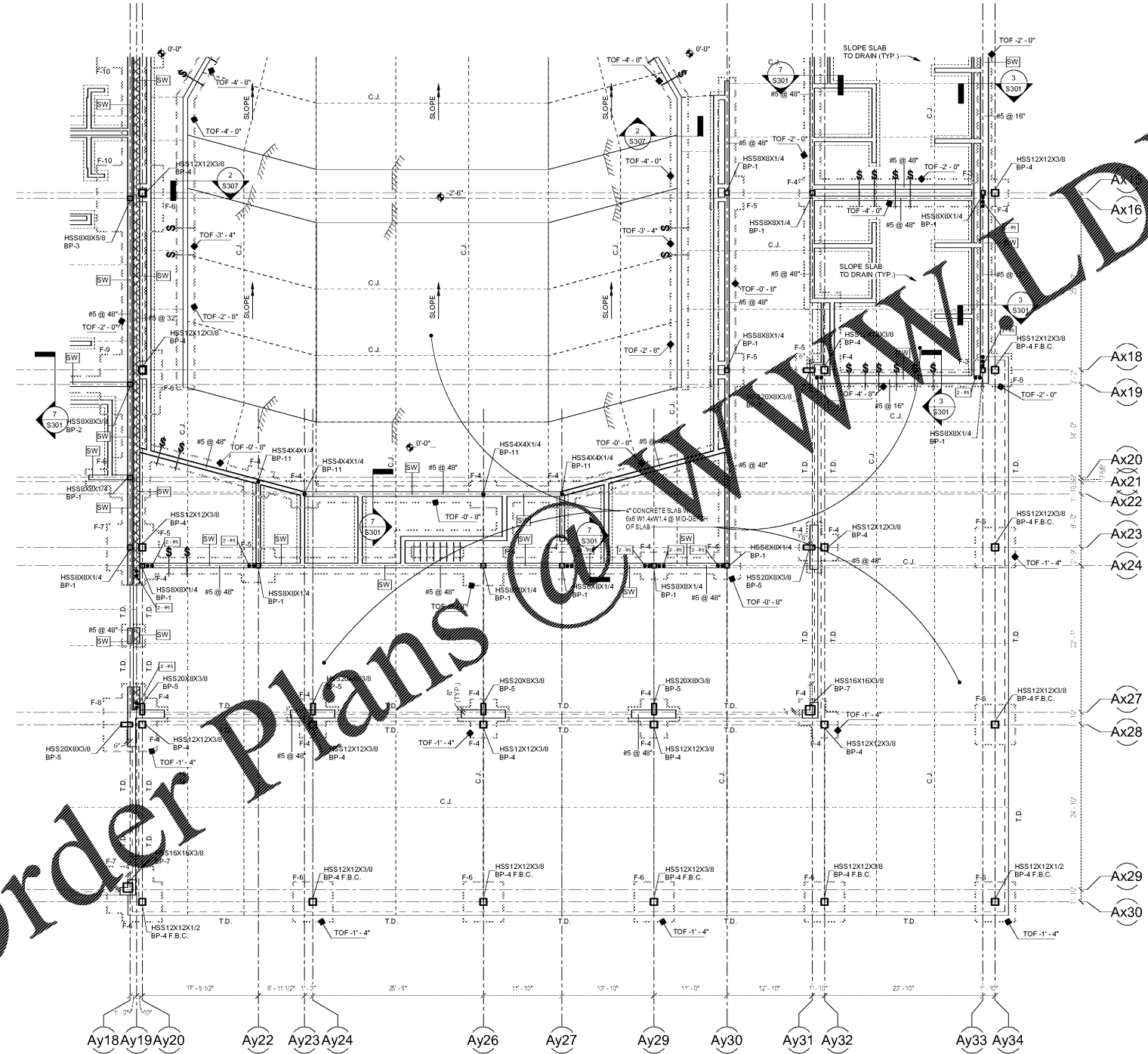
FOUNDATION PLAN NOTES

- TOP OF ALL INTERIOR WALL AND COLUMN FOOTINGS SHALL BE 6" BELOW FINISHED FLOOR ELEVATION UNLESS NOTED OTHERWISE ON FOUNDATION PLANS.
- THICKENED SLABS ARE REQUIRED UNDER ALL 6" INTERIOR NON-LOAD BEARING WALLS AND CHASE WALLS. THICKENED SLABS ARE NOT SHOWN ON THE FOUNDATION PLAN; REFER TO TYPICAL DETAILS ON SHEET S301.
- COORDINATE WITH PLUMBING DRAWINGS AND LOWER FOOTINGS IF REQUIRED TO PREVENT INTERFERENCE WITH PLUMBING.
- ALL REINFORCED MASONRY WALLS MUST BE REINFORCED AS SHOWN IN DETAIL T5301.
- SEE SHEET S301 FOR THE FOLLOWING:
  - CONTROL JOINTS
  - TURNED DOWN SLAB
  - WALL FOOTING STEPS
  - DEPRESSED SLAB
  - FOOTING SCHEDULE
  - BASE PLATE SCHEDULE
  - GENERAL NOTES
  - THICKENED SLAB

FOUNDATION LEGEND

- STEPPED WALL FOOTING
- SPOT ELEVATION
- TOP OF FOOTING (TOP) ELEVATION
- FOOTING
- BASE PLATE MARK; SEE SCHEDULE ON S301
- FOOTING MARK; SEE SCHEDULE ON S301
- CONCRETE PIER MARK; SEE PIER SCHEDULE ON S301
- FIXED BASE COLUMN; SEE TYPICAL DETAIL ON S302
- SHEAR WALL
- SLAB CONTROL JOINT (C.J.)
- SLAB DEPRESSION PATTERN
- SLAB DEPRESSION SYMBOL WITH DEPRESSION DIMENSION
- QUANTITY & SIZE OF VERTICAL BARS REQUIRED ADJACENT TO THE COLUMN OR WALL OPENING.
- TURN DOWN SLAB
- THICKENED SLAB

Order Plans @ WWW.WLDILine.com



SA&E PROJECT NUMBER	01-615-056
BID PACKAGE	BP-1
ISSUED FOR CONSTRUCTION	10/15/2019
<b>Southern AE</b> 7951 Troon Circle Austell, Ga 30168 (770) 519-7777 architects & engineers	REVISIONS
	R # Doc # Date

FACILITY CODE NUMBER: 674-0110  
**GYMNASIUM/AUDITORIUM FOR:**  
**HEARD COUNTY SCHOOLS**  
 545 MAIN STREET, FRANKLIN, GA 30217  
**HEARD COUNTY SCHOOL SYSTEM**  
 FRANKLIN, GEORGIA

AUDITORIUM FOUNDATION - Part 2

		DRAWING NUMBER
		<b>S104</b>

AUDITORIUM FOUNDATION PLAN - Part 2  
1/8" = 1'-0"