

FOUNDATION PLAN NOTES

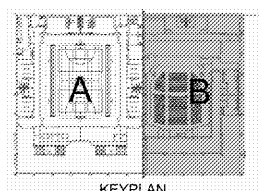
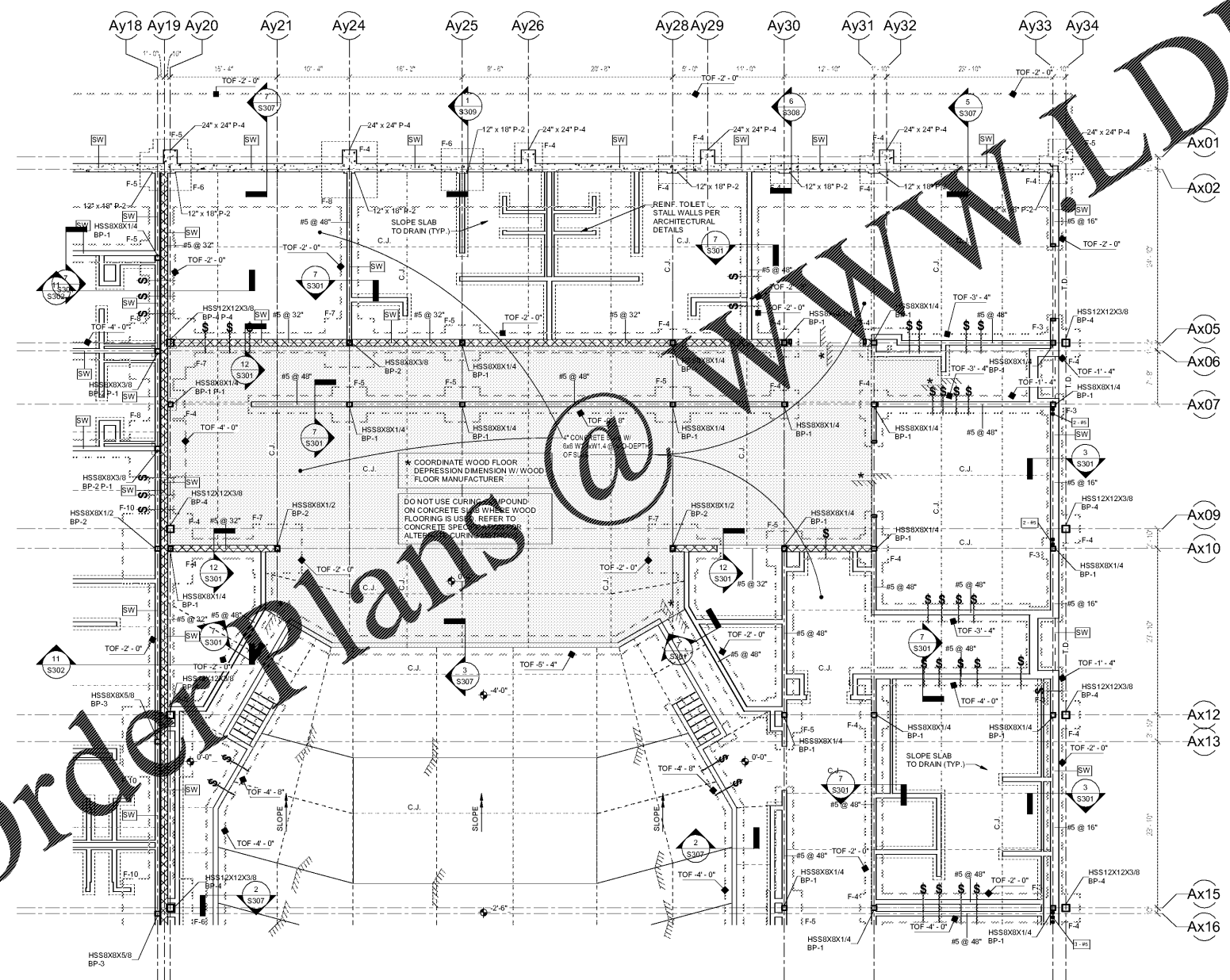
1. TOP OF ALL INTERIOR WALL AND COLUMN FOOTINGS SHALL BE BELOW FINISHED FLOOR ELEVATION UNLESS NOTED OTHERWISE ON FOUNDATION PLAN.
2. THICKENED SLABS ARE REQUIRED UNDER ALL INTERIOR NON-LOAD BEARING WALLS AND CHASE WALLS. THICKENED SLABS ARE NOT SHOWN ON THE FOUNDATION PLAN; REFER TO TYPICAL DETAILS ON SHEET S301.
3. COORDINATE WITH PLUMBING DRAWINGS AND LOWER FOOTINGS IF REQUIRED TO PREVENT INTERFERENCE WITH PLUMBING.
4. ALL REINFORCED MASONRY WALLS MUST BE REINFORCED AS SHOWN IN DETAIL 71301.
5. SEE SHEET S301 FOR THE FOLLOWING:
 - CONTROL JOINTS
 - TURNED DOWN SLAB
 - WALL FOOTING STEPS
 - DEPRESSION SLAB
 - FOOTING SCHEDULE
 - BASE PLATE SCHEDULE
 - GENERAL NOTES
 - THICKENED SLAB

FOUNDATION LEGEND

- STEPPED WALL FOOTING
- SPOT ELEVATION
- TOP OF FOOTING (TOF) ELEVATION
- FOOTING
- 18" x 18" BASE PLATE MARK; SEE SCHEDULE ON S301
- 12" x 12" FOOTING MARK; SEE SCHEDULE ON S301
- CONCRETE PIER MARK; SEE PIER SCHEDULE ON S301
- FIXED BASE COLUMN; SEE TYPICAL DETAIL ON S02
- SHEAR WALL
- SLAB CONTROL JOINT (C.J.)
- SLAB DEPRESSION PATTERN
- SLAB DEPRESSION SYMBOL WITH DEPRESSION DIMENSION
- QUANTITY & SIZE OF VERTICAL BARS REQUIRED ADJACENT TO THE COLUMN OR WALL OPENING
- TURN DOWN SLAB
- THICKENED SLAB

OrderPlans.com

WWW.LDILine.com



AUDITORIUM FOUNDATION PLAN - Part 1

1/8" = 1'-0"

SA&E PROJECT NUMBER	01-615-056
BID PACKAGE	BP-1
ISSUED FOR CONSTRUCTION	10/15/2019
Southern AE 7951 Troon Circle Austell, Ga 30168 (770) 519-7777 architects & engineers	REVISIONS
	R # Doc # Date

FACILITY CODE NUMBER: 674-0110
GYMNASIUM/AUDITORIUM FOR:
HEARD COUNTY SCHOOLS
 545 MAIN STREET, FRANKLIN, GA 30217
HEARD COUNTY SCHOOL SYSTEM
 FRANKLIN, GEORGIA

AUDITORIUM FOUNDATION - Part 1

STATE OF GEORGIA REGISTERED ARCHITECT	STATE OF GEORGIA REGISTERED ARCHITECT	DRAWING NUMBER
		S103