

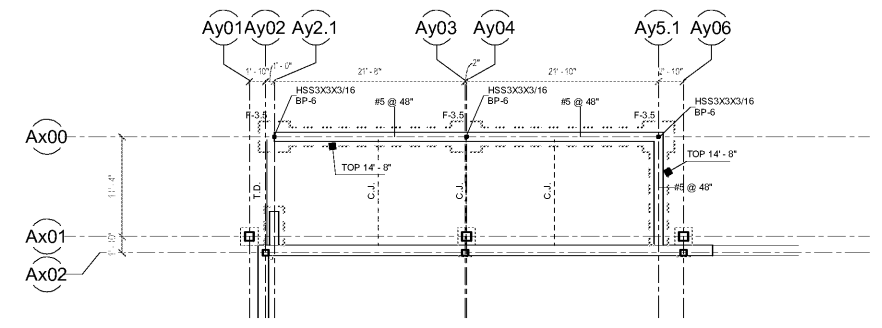
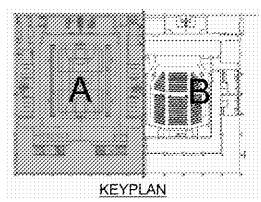
- FOUNDATION PLAN NOTES**
1. TOP OF ALL INTERIOR WALL AND COLUMN FOOTINGS SHALL BE 1" BELOW FINISHED FLOOR ELEVATION UNLESS NOTED OTHERWISE ON FOUNDATION PLANS.
 2. THICKENED SLABS ARE REQUIRED UNDER ALL 4" INTERIOR NON-LOAD BEARING WALLS AND CHASE WALLS. THICKENED SLABS ARE NOT SHOWN ON THE FOUNDATION PLAN; REFER TO TYPICAL DETAILS ON SHEET S301.
 3. COORDINATE WITH PLUMBING DRAWINGS AND LOWER FOOTINGS IF REQUIRED TO PREVENT INTERFERENCE WITH PLUMBING.
 4. ALL REINFORCED MASONRY WALLS MUST BE REINFORCED AS SHOWN IN DETAIL T6301.
 5. SEE SHEET S301 FOR THE FOLLOWING:
 - CONTROL JOINTS
 - TURNED DOWN SLAB
 - WALL FOOTING STEPS
 - DEPRESSED SLAB
 - FOOTING SCHEDULE
 - BASE PLATE SCHEDULE
 - GENERAL NOTES
 - THICKENED SLAB
- FOUNDATION LEGEND**
- STEPPED WALL FOOTING
 - SPOT ELEVATION
 - TOP OF FOOTING (TOP) ELEVATION
 - FOOTING
 - BASE PLATE MARK; SEE SCHEDULE ON S301
 - FOOTING MARK; SEE SCHEDULE ON S301
 - CONCRETE PIER MARK; SEE PIER SCHEDULE ON S301
 - FIXED BASE COLUMN; SEE TYPICAL DETAIL ON S302
 - SHEAR WALL
 - SUB CONTROL JOINT ("C.J.")
 - SLAB DEPRESSION PATTERN
 - SLAB DEPRESSION SYMBOL, WITH DEPRESSION DIMENSION
 - QUANTITY & SIZE OF VERTICAL BARS REQUIRED ADJACENT TO THE COLUMN OR WALL OPENING.
 - TURN DOWN SLAB
 - THICKENED SLAB

★ COORDINATE WOOD FLOOR DEPRESSION DIMENSION W WOOD FLOOR MANUFACTURER

DO NOT USE CURING COMPOUND ON CONCRETE SLAB WHERE WOOD FLOORING IS USED. REFER TO CONCRETE SPECIFICATION FOR ALTERNATE CURING METHODS.

Order Plans @ www.pdfline.com

GYM FOUNDATION PLAN - Part 1
1/8" = 1'-0"



OUTDOOR GRILLING AREA - FOUNDATION PLAN
1/8" = 1'-0"

SA&E PROJECT NUMBER	01-615-056
BID PACKAGE	BP-1
ISSUED FOR CONSTRUCTION	10/15/2019
Southern AE 7951 Troon Circle Austell, Ga 30168 (770) 519-7777 architects & engineers	REVISIONS
	R # Doc # Date

FACILITY CODE NUMBER: 674-0110
GYMNASIUM/AUDITORIUM FOR:
HEARD COUNTY SCHOOLS
 545 MAIN STREET, FRANKLIN, GA 30217
HEARD COUNTY SCHOOL SYSTEM
 FRANKLIN, GEORGIA

GYM FOUNDATION PLAN - Part 1

DRAWING NUMBER

S101