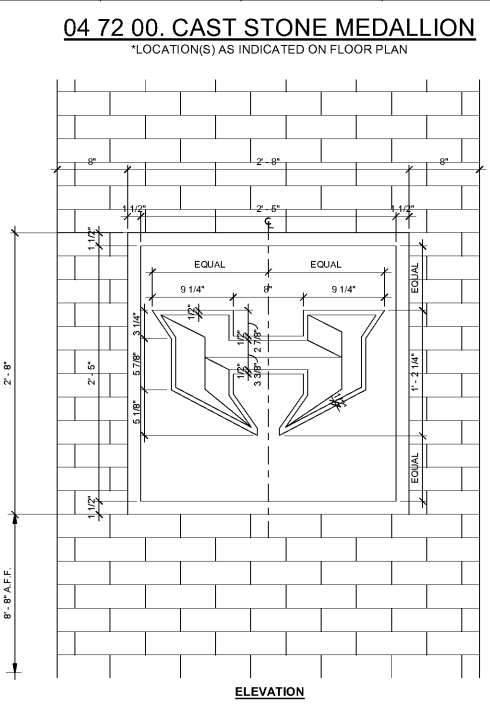
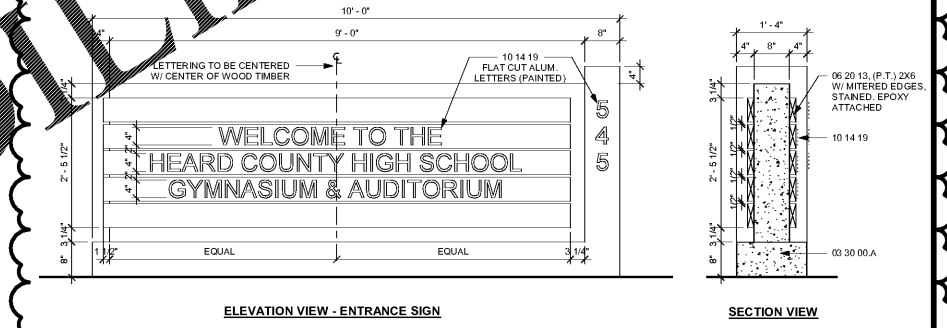
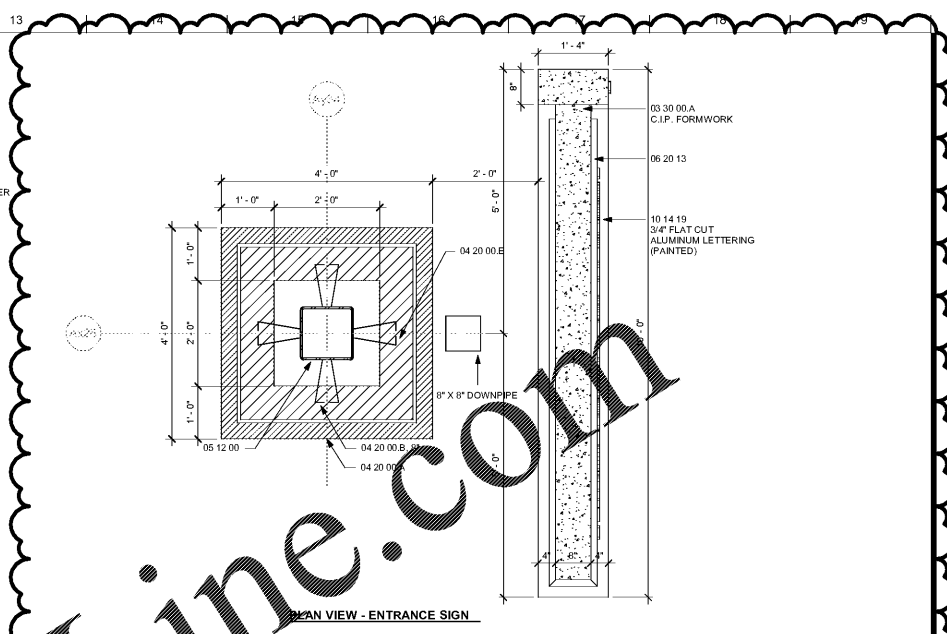


1 TYPICAL DETAIL - SUSPENDED ALUMINUM BRAVES HEAD SCULPTURE  
3/8" = 1'-0"



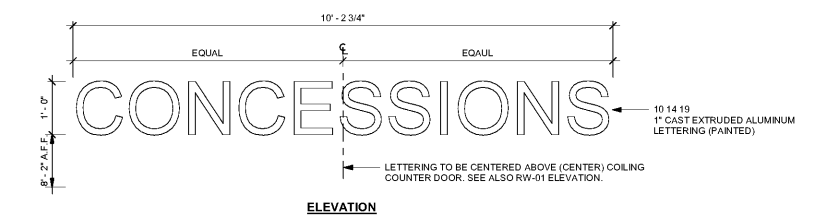
2 TYPICAL DETAIL - CAST STONE MEDALLION - HEARD COUNTY 'H' LOGO  
1 1/2" = 1'-0"



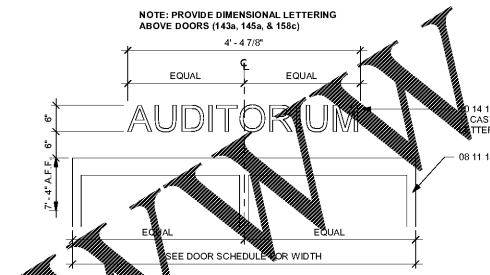
3 TYPICAL DETAIL - BUILDING ENTRANCE WELCOME SIGN  
3/4" = 1'-0"

6 TYPICAL DETAIL - DOOR ENTRANCE SIGN @ GYMNASIUM (CURTAIN WALL CW-03)  
3/4" = 1'-0"

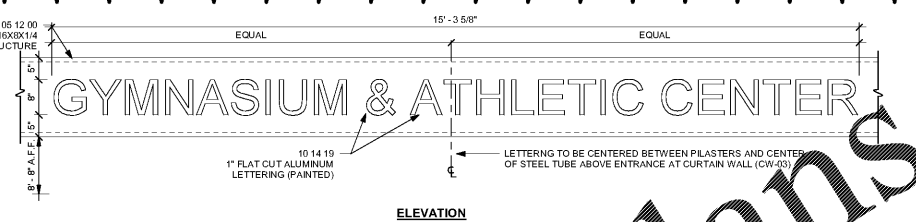
7 TYPICAL DETAIL - DOOR ENTRANCE SIGN @ AUDITORIUM (CURTAIN WALL CW-05)  
3/4" = 1'-0"



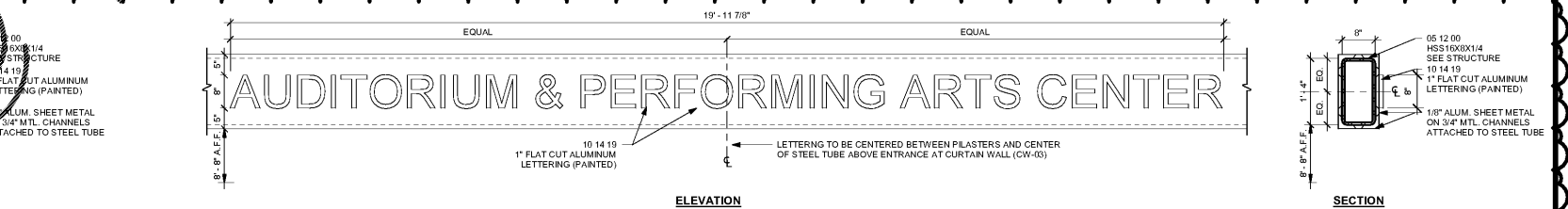
4 TYPICAL DETAIL - CONCESSIONS ALUMINUM SIGN  
3/4" = 1'-0"



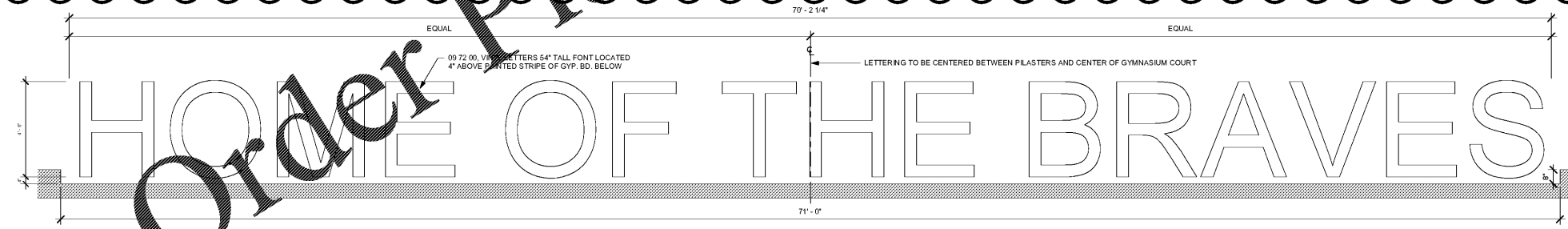
5 TYPICAL DETAIL - AUDITORIUM THEATER SIGN  
3/4" = 1'-0"



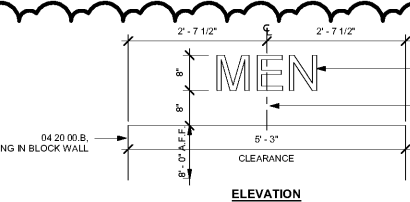
6 TYPICAL DETAIL - DOOR ENTRANCE SIGN @ GYMNASIUM (CURTAIN WALL CW-03)  
3/4" = 1'-0"



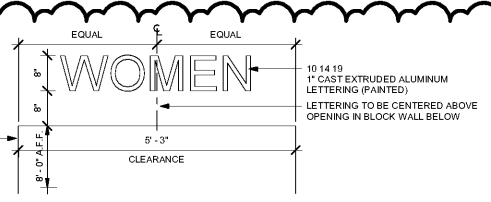
7 TYPICAL DETAIL - DOOR ENTRANCE SIGN @ AUDITORIUM (CURTAIN WALL CW-05)  
3/4" = 1'-0"



8 TYPICAL DETAIL - CONCESSIONS ALUMINUM SIGN  
3/8" = 1'-0"



9 TYPICAL DETAIL - MENS 206 ALUMINUM SIGN  
3/4" = 1'-0"



10 TYPICAL DETAIL - WOMENS 204 ALUMINUM SIGN  
3/4" = 1'-0"

SA&E PROJECT NUMBER	01-615-056
BID PACKAGE	BP-1
ISSUED FOR CONSTRUCTION	10/15/2019
<b>Southern AE</b>	REVISIONS
7951 Truon Circle Austell, Ga 30168 (770) 819-7777	R# Doc# Date
architects & engineers	1 AD1 11.4.2019
<small>© COPYRIGHT 2019 BY SOUTHERN A/E, LLC. ALL RIGHTS RESERVED. THIS DOCUMENT IS THE PROPERTY OF SOUTHERN A/E, LLC AND SHALL NOT BE COPIED OR REPRODUCED IN WHOLE OR IN PART WITHOUT EXPRESS WRITTEN PERMISSION BY SOUTHERN A/E, LLC.</small>	

FACILITY CODE NUMBER: 674-0110  
**GYMNASIUM/AUDITORIUM FOR:**  
**HEARD COUNTY SCHOOLS**  
 545 MAIN STREET, FRANKLIN, GA 30217  
**HEARD COUNTY SCHOOL SYSTEM**  
 FRANKLIN, GEORGIA

**DIMENSIONAL LETTERING & SIGNAGE**

	DRAWING NUMBER
	<b>A515</b>

Order Plans

WWW.LDLINE.COM