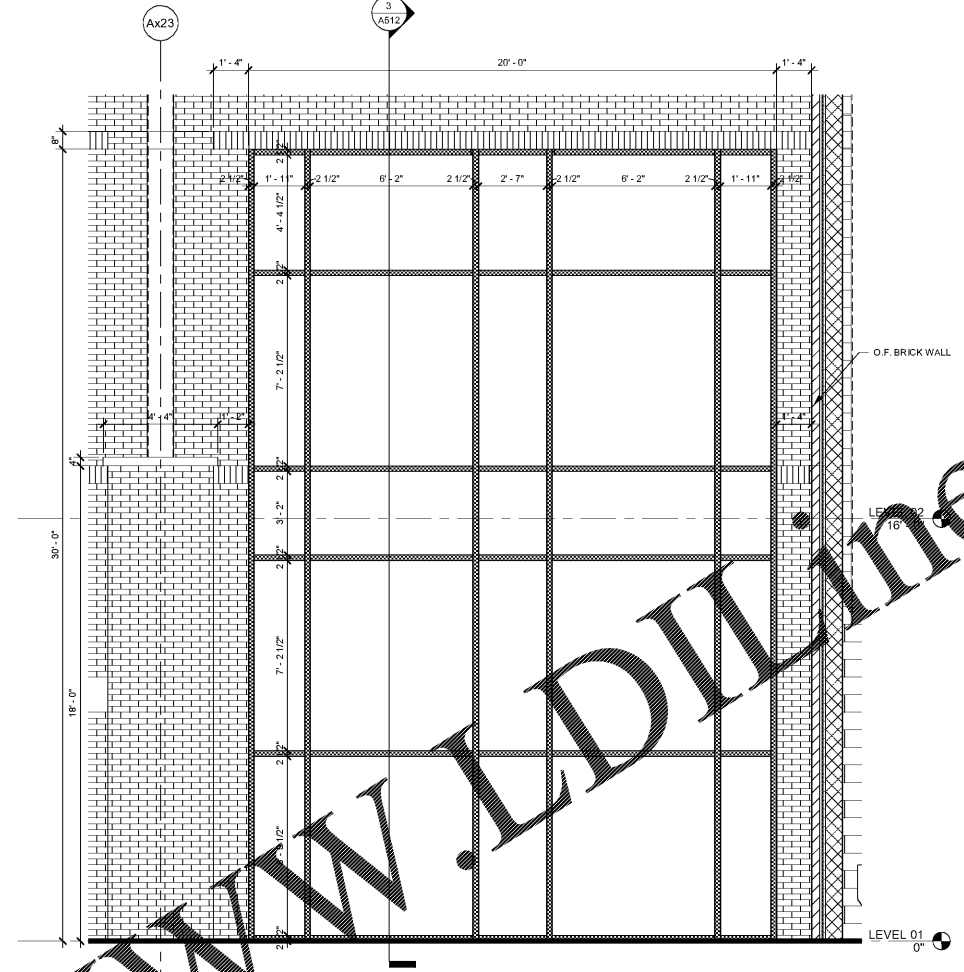


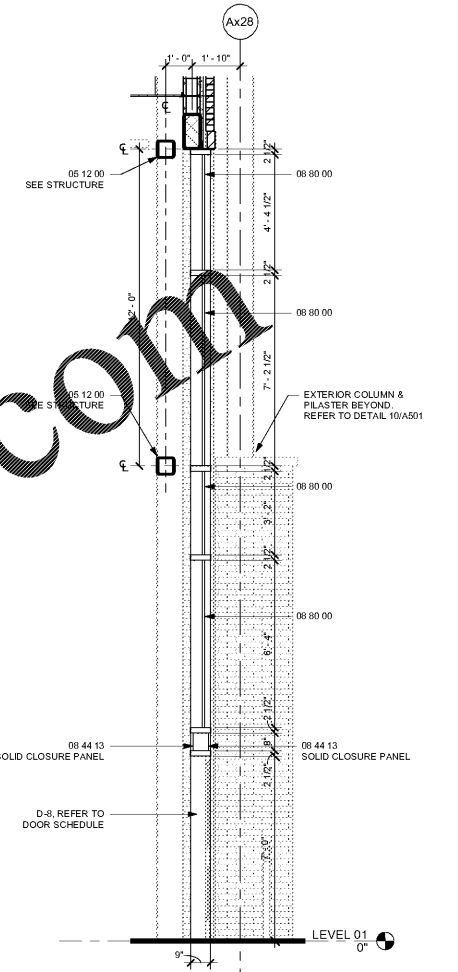
WINDOW	CW-05
MATERIAL	ALUMINUM
TYPE	FIXED
RATING	NONE
SPEC.	08 44 13
GLASS	INSULATED/TEMPERED

1 TYPICAL ELEVATION - SOUTH CURTAIN WALL (CW-05)
3/8" = 1'-0"

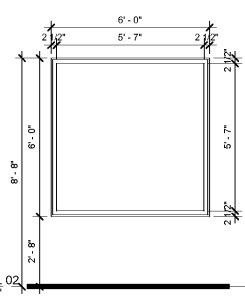


WINDOW	CW-06
MATERIAL	ALUMINUM
TYPE	FIXED
RATING	NONE
SPEC.	08 44 13
GLASS	INSULATED/TEMPERED

2 TYPICAL ELEVATION - SOUTH CURTAIN WALL (CW-06)
3/8" = 1'-0"

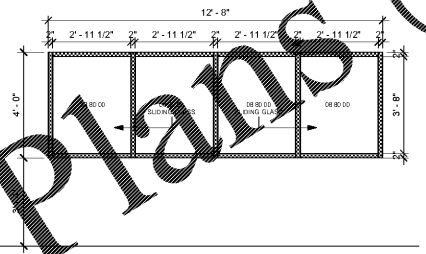


3 WALL SECTION - CURTAIN WALL @ ENTRANCE DOORS TYPICAL
3/8" = 1'-0"



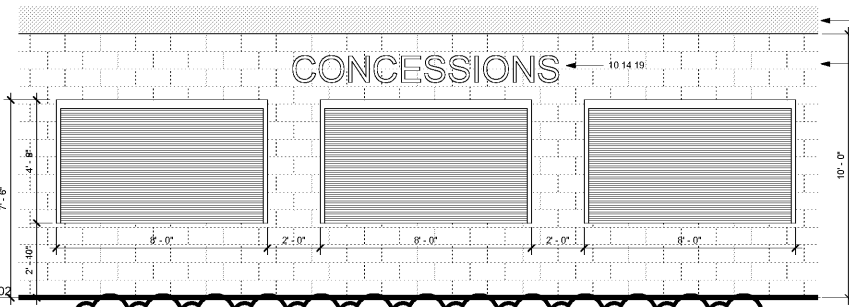
WINDOW	SF-03
MATERIAL	ALUMINUM
TYPE	FIXED
RATING	NONE
SPEC.	08 41 13
DETAILS	7/A514
GLASS	INSULATED/TEMPERED

4 TYPICAL ELEVATION - WINDOW (SF-03)
3/8" = 1'-0"



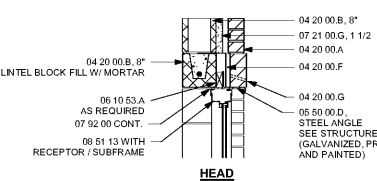
WINDOW	AL-01
MATERIAL	ALUMINUM
TYPE	FIXED
RATING	NONE
SPEC.	08 51 13
DETAILS	8/A514
GLASS	INSULATED/TEMPERED

5 TYPICAL ELEVATION - WINDOW (AL-01)
3/8" = 1'-0"

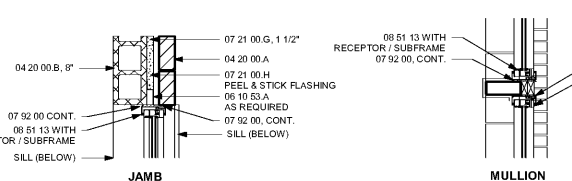


WINDOW	RW-01
MATERIAL	STAINLESS STEEL
TYPE	COILING
RATING	1 HOUR RATING
SPEC.	08 33 23
DETAILS	9/A503 & 10/A503
GLASS	NONE

6 TYPICAL ELEVATION - COILING COUNTER DOOR (RW-01)
3/8" = 1'-0"



7 ALUMINUM WINDOW DETAILS - EXTERIOR
3/4" = 1'-0"



NOTE:
 *DIMENSIONS OF CURTAIN WALL & STOREFRONT FRAME MAY VARY WITH MANUFACTURER. SPACING DESIGN INTENT SHALL BE MAINTAINED.
 *ATTACHMENT OF CURTAIN WALL SYSTEM TO BUILDING STRUCTURE IS RESPONSIBILITY OF CURTAIN WALL MANUFACTURER. REFER TO STRUCTURAL DRAWINGS.
 *CURTAIN WALL & STOREFRONT FRAME TO BE CLEAR ANODIZED SEE SPECIFICATIONS.
 *PROVIDE SOLID ALUM. CLOSURE PANEL ABOVE DOORS IN CURTAIN WALL & STOREFRONT. PANEL TO MATCH COLOR OF MULLIONS.
 *EXTERIOR STRUCTURAL COLUMNS & BRICK PILASTER FOR REFERENCE ONLY. REFER ALSO TO FLOOR PLANS AND STRUCTURAL DRAWINGS.

SA&E PROJECT NUMBER	01-615-056	
BID PACKAGE	BP-1	
ISSUED FOR CONSTRUCTION	10/15/2019	
Southern AE		
7951 Tronox Circle Austell, Ga 30168 (770) 519-7777 architects & engineers		
R #	Doc #	Date
1	AD1	11.4.2019
© COPYRIGHT 2019 BY SOUTHERN AE, LLC. ALL RIGHTS RESERVED. THIS DOCUMENT IS THE PROPERTY OF SOUTHERN AE, LLC AND SHALL NOT BE COPIED OR REPRODUCED IN WHOLE OR IN PART WITHOUT EXPRESS WRITTEN PERMISSION FROM SOUTHERN AE, LLC.		

FACILITY CODE NUMBER: 674-0110
GYMNASIUM/AUDITORIUM FOR:
HEARD COUNTY SCHOOLS
 545 MAIN STREET, FRANKLIN, GA 30217
HEARD COUNTY SCHOOL SYSTEM
 FRANKLIN, GEORGIA

CURTAIN WALL/STOREFRONT & WINDOW DETAILS

DRAWING NUMBER
A514