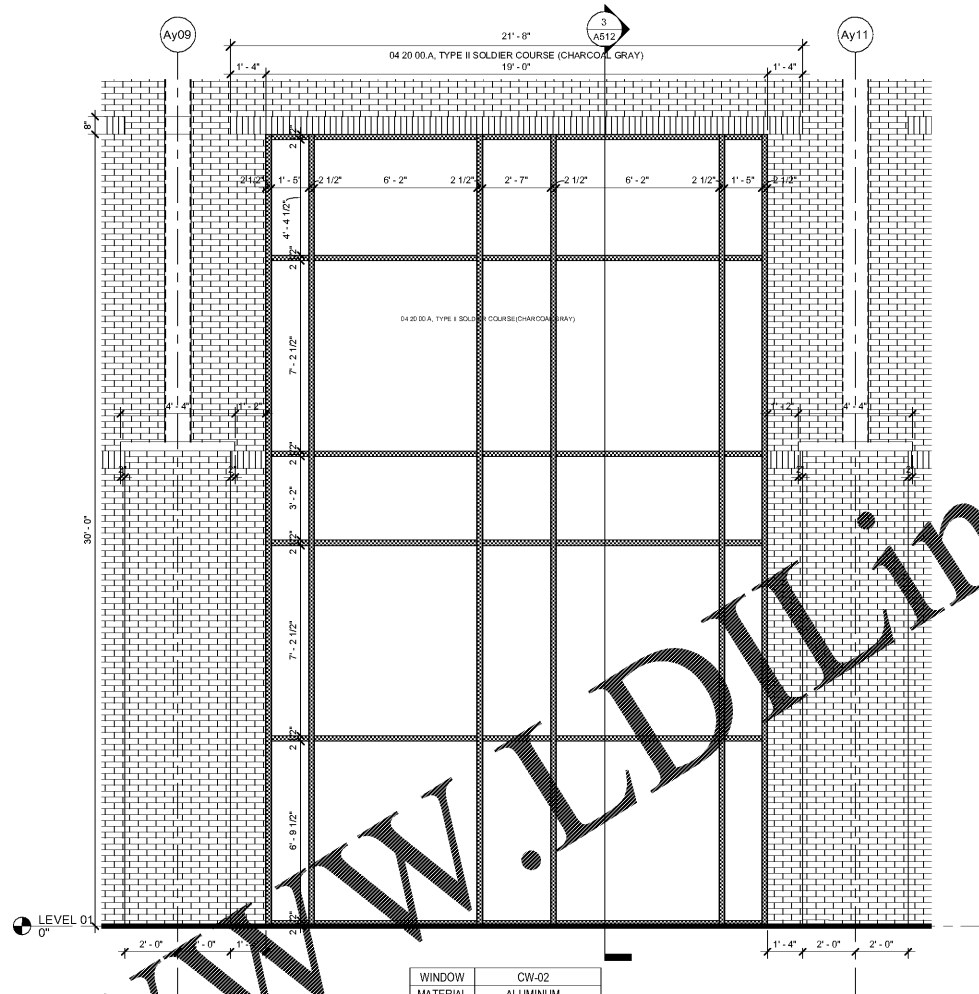


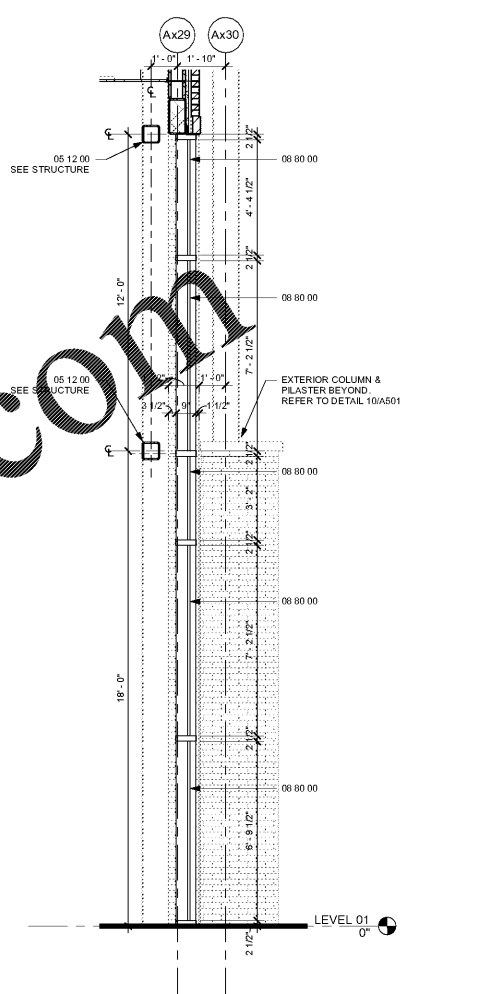
WINDOW	CW-01
MATERIAL	ALUMINUM
TYPE	FIXED
RATING	NONE
SPEC.	08 44 13
GLASS	INSULATED/TEMPERED

1 TYPICAL ELEVATION - WEST CURTAIN WALL (CW-01)
3/8" = 1'-0"

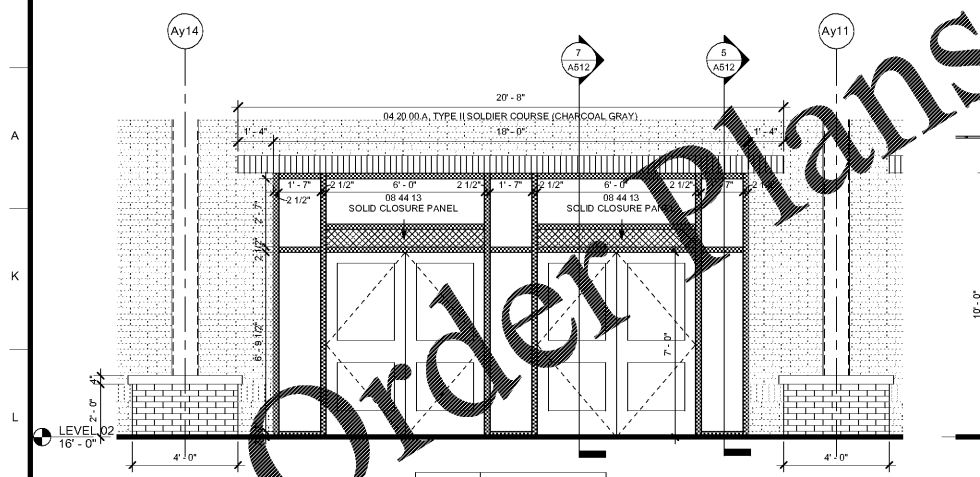


WINDOW	CW-02
MATERIAL	ALUMINUM
TYPE	FIXED
RATING	NONE
SPEC.	08 44 13
GLASS	INSULATED/TEMPERED

2 TYPICAL ELEVATION - WEST CURTAIN WALL (CW-02)
3/8" = 1'-0"

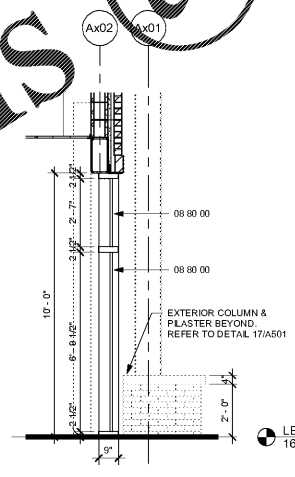


3 WALL SECTION - CURTAIN WALL TYPICAL
3/8" = 1'-0"

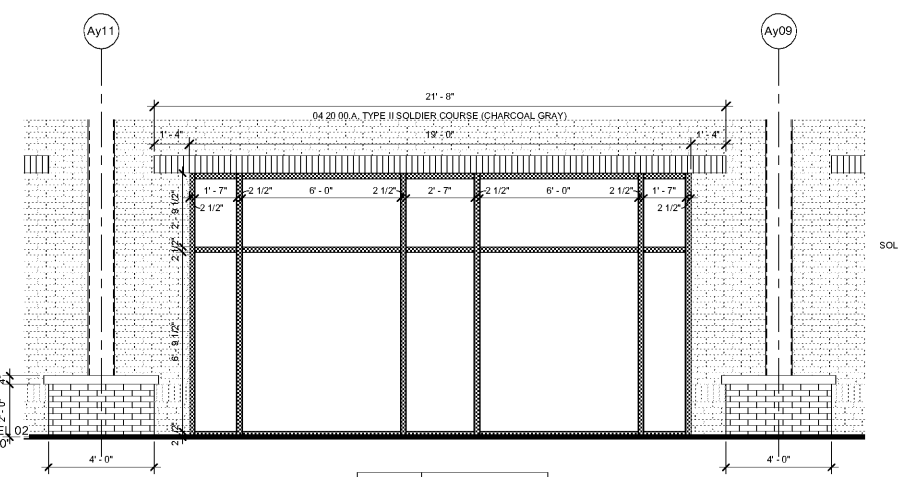


WINDOW	SF-01
MATERIAL	ALUMINUM
TYPE	FIXED
RATING	NONE
SPEC.	08 41 13
GLASS	INSULATED/TEMPERED

4 TYPICAL ELEVATION - EAST STOREFRONT (SF-01)
3/8" = 1'-0"

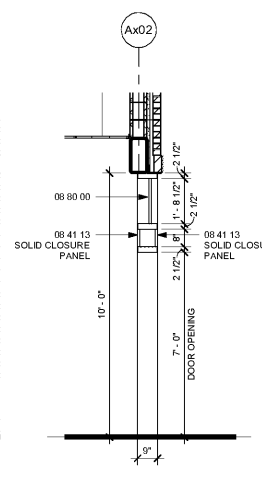


5 WALL SECTION - STOREFRONT @ EAST ENTRANCE TYPICAL
3/8" = 1'-0"



WINDOW	SF-02
MATERIAL	ALUMINUM
TYPE	FIXED
RATING	NONE
SPEC.	08 41 13
GLASS	INSULATED/TEMPERED

6 TYPICAL ELEVATION - EAST STOREFRONT (SF-02)
3/8" = 1'-0"



7 WALL SECTION - STOREFRONT @ EAST ENTRANCE TYPICAL THRU DOOR
3/8" = 1'-0"

NOTE:
 *DIMENSIONS OF CURTAIN WALL & STOREFRONT FRAME MAY VARY WITH MANUFACTURER. SPACING DESIGN INTENT SHALL BE MAINTAINED.
 *ATTACHMENT OF CURTAIN WALL SYSTEM TO BUILDING STRUCTURE IS RESPONSIBILITY OF CURTAIN WALL MANUFACTURER. REFER TO STRUCTURAL DRAWINGS.
 *CURTAIN WALL & STOREFRONT FRAME TO BE CLEAR ANODIZED SEE SPECIFICATIONS.
 *PROVIDE SOLID ALUM. CLOSURE PANEL ABOVE DOORS IN CURTAIN WALL & STOREFRONT. PANEL TO MATCH COLOR OF MULLIONS.
 *EXTERIOR STRUCTURAL COLUMNS & BRICK PILASTER FOR REFERENCE ONLY. REFER ALSO TO FLOOR PLANS AND STRUCTURAL DRAWINGS.

SA&E PROJECT NUMBER	01-615-056
BID PACKAGE	BP-1
ISSUED FOR CONSTRUCTION	10/15/2019
Southern AE	REVISIONS
7951 Truon Circle Austell, Ga 30168 (770) 819-7777	R # Doc # Date
architects & engineers	

FACILITY CODE NUMBER: 674-0110
 GYMNASIUM/AUDITORIUM FOR:
HEARD COUNTY SCHOOLS
 545 MAIN STREET, FRANKLIN, GA 30217
HEARD COUNTY SCHOOL SYSTEM
 FRANKLIN, GEORGIA

CURTAIN WALL/STOREFRONT & WINDOW DETAILS

	DRAWING NUMBER
	A512

Order Plans @

WWW.LDILine.com