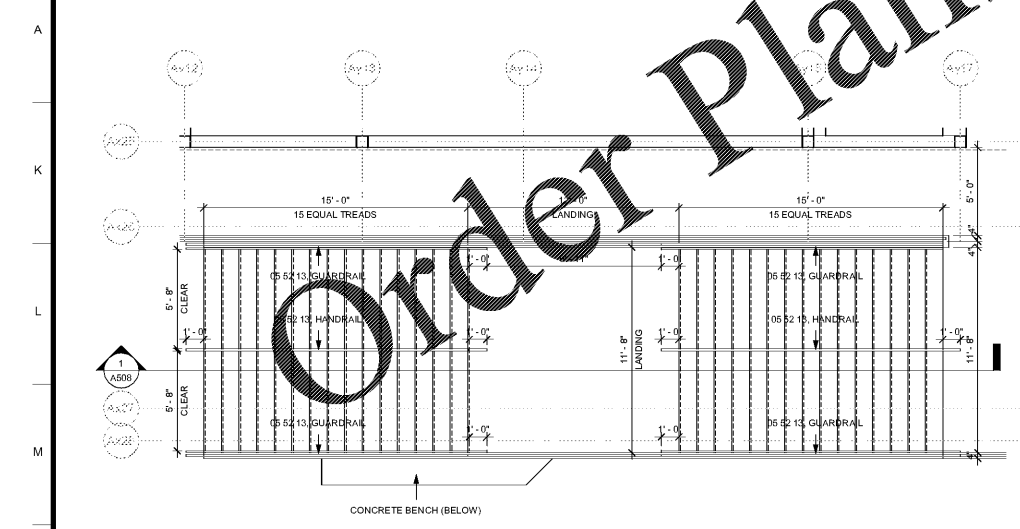
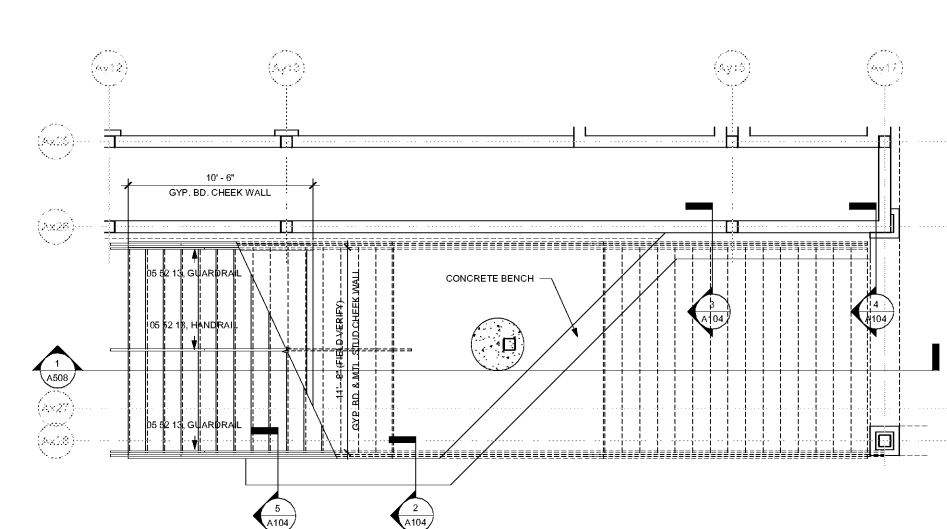


1 TYPICAL SECTION - GYMNASIUM LOBBY STAIR (01)
3/4" = 1'-0"



2 ENLARGED FLOOR PLAN - LEVEL 02 - GYMNASIUM LOBBY STAIR
1/4" = 1'-0"



3 ENLARGED FLOOR PLAN - LEVEL 01 - GYMNASIUM LOBBY STAIR
1/4" = 1'-0"

- NOTES TO METAL STAIRS:
1. REFER TO ARCHITECTURAL FLOOR PLANS AND STRUCTURAL DRAWINGS FOR ALL STAIRS DETAILS.
 2. ALL JOINTS TO BE WELDED AND GROUND SMOOTH.
 3. ALL EXPOSED STEEL TO BE PAINTED.
 4. ALL STAIR RISERS TO BE PAINTED. TREADS ARE FINISHED SEALED CONCRETE W/ POURED IN PLACE NOSING. SEE DETAIL 4A510.

SA&E PROJECT NUMBER	01-615-056
BID PACKAGE	BP-1
ISSUED FOR CONSTRUCTION	10/15/2019
Southern AE 7951 Traxon Circle Austell, Ga 30168 (770) 519-7777 architects & engineers	REVISIONS
	R # Doc # Date

FACILITY CODE NUMBER: 674-0110
 GYMNASIUM/AUDITORIUM FOR:
HEARD COUNTY SCHOOLS
 545 MAIN STREET, FRANKLIN, GA 30217
HEARD COUNTY SCHOOL SYSTEM
 FRANKLIN, GEORGIA

STAIR DETAILS	DRAWING NUMBER
	A508