

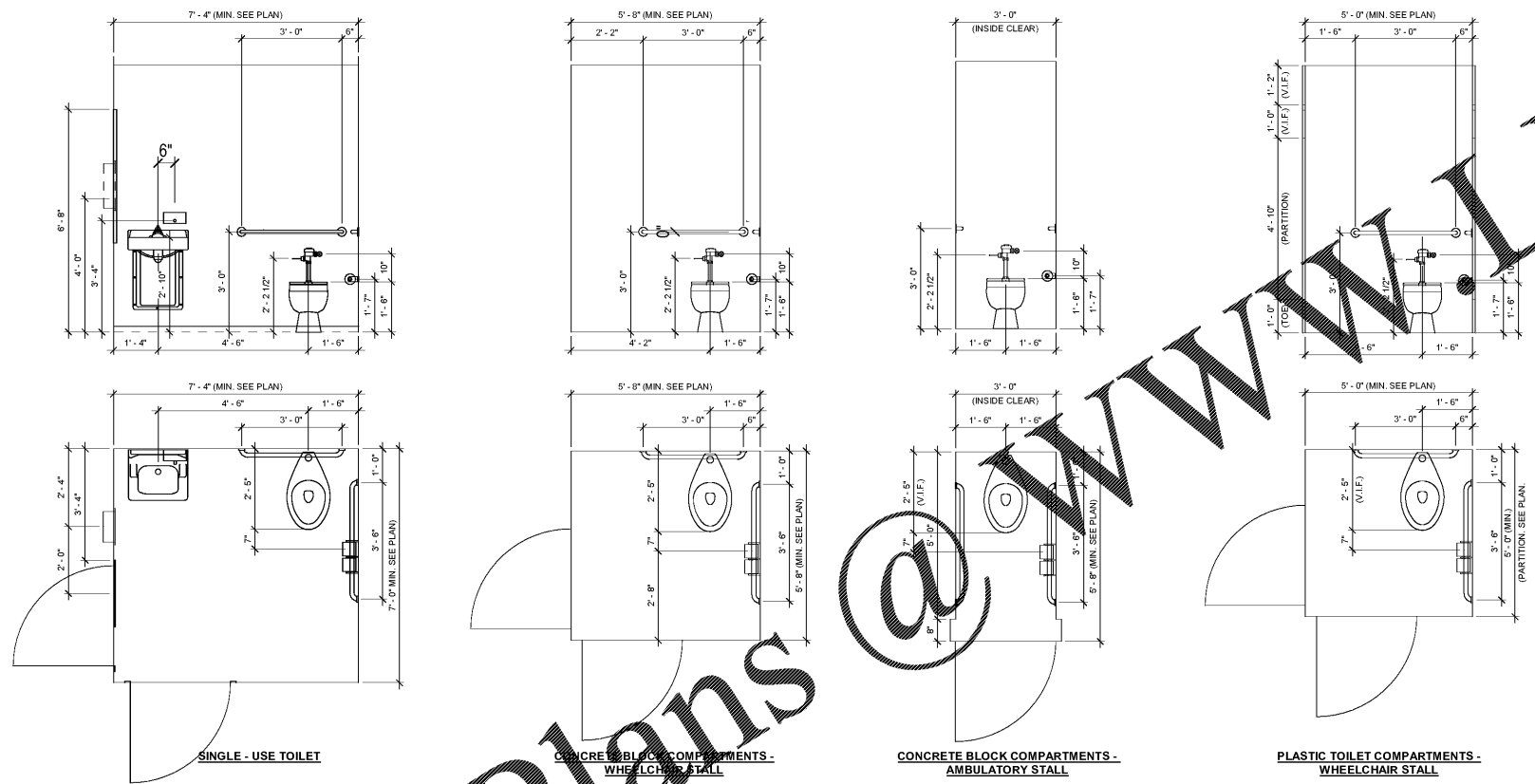
REFER TO FLOOR PLAN FOR DRAIN LOCATION. SLOPE SHOWER FLOOR TO DRAIN.
REFER TO FINISH SCHEDULE AND SPECIFICATIONS FOR SHOWER FLOOR AND BASE FINISH.

1 DETAIL - TYPICAL 3' X 3' MASONRY SHOWER STALL
3/4" = 1'-0"

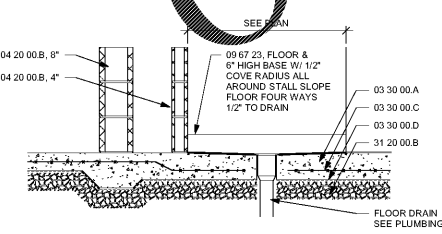
2 DETAIL - TYPICAL 3'D X 4'L OR 3'D X 5'L MASONRY SHOWER STALL
3/4" = 1'-0"

ITEM	GRADE LEVEL											HC ACCESSIBILITY	
	Pre-K	K	1	2	3	4	5	6	7	8-12/Adult			
CHALK & TACKBOARDS	21"	24"	24"	25"	26"	27"	28"	29"	31"	33"		Bottom of board above finish floor	
WORKING COUNTERS (d)	30"	30"	30"	30"	30"	30"	30"	30"	30"	34"		Installed height	
COUNTER SINKS (d)	30"	30"	30"	30"	30"	30"	30"	30"	30"	34"		Installed rim mount height	
HANGING RODS	36"	40"	40"	40"	40"	44"	44"	44"	44"	48"		Top of hang rod above finish floor	
DRINKING FOUNTAINS	27"	27"	27"	27"	30"	30"	30"	30"	30"	38"		Typ. spout height/H.C. spout height	
WATER CLOSETS (a)	15"	15"	15"	15"	15"	15"	15"	15"	15"	18"		Typ. seat height/H.C. seat height	
WATER CLOSET FLUSH CONTROLS (e)	21.5"	21.5"	21.5"	21.5"	21.5"	21.5"	21.5"	21.5"	21.5"	26.5"		Typ. cl flush cont./H.C. cl flush cont.	
LAVATORIES (a)	15"	15"	15"	15"	15"	15"	15"	15"	15"	31"		Typ. rim height/H.C. rim height	
MIRRORS	5'-8" TO 6'-0" TO TOP											6'-6" TO TOP	Within maximum h.c. bottom edge height
URINALS	16"	17"	17"	17"	17"	17"	17"	17"	17"	17"		Typ. rim height/H.C. rim height	
URINAL FLUSH CONTROLS	43"	44"	44"	44"	44"	44"	44"	44"	44"	44"		Typ. cl flush cont./H.C. cl flush cont.	
GRAB BARS TOILETS (c)	20"	25"	25"	25"	25"	25"	25"	25"	25"	25"		Centerline of bar above finish floor	
TISSUE DISPENSER	14"	17"	17"	17"	17"	17"	17"	17"	17"	19"		Centerline of disp. above finish floor	
TOWEL DISPENSER	36"	40"	40"	40"	40"	40"	40"	40"	40"	40"		Centerline of slot above finish floor	
SOAP DISPENSER	36"	40"	40"	40"	40"	40"	40"	40"	40"	40"		Centerline of spout above finish floor	
HAND DRYER	36"	40"	40"	40"	40"	40"	40"	40"	40"	48"		Centerline of button above finish floor	
HAND RAILS	top rail @ 5'-0" min. a.f.f. & extra rail (1.25" dia) @ 28" a.f.f.											36"	Top of handrail above finish floor
FIRE EXTINGUISHER	bottom of cabinet @ 2'-8" a.f.f.												Installed height
ROOM SIGNAGE	6" min. to centerline												Mounted on wall @ latch side of door
SHOWER SEAT	12"	15"	15"	15"	15"	15"	15"	15"	15"	15"		Typ. seat height is also accessible	
SHOWER CONTROLS	34"											43"	Centerline control area a.f.f.

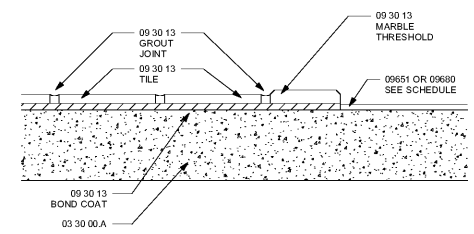
- (a) Mixtures in single-use toilets mounted at h.c. rim height.
- (b) Requires shifting the rear grab bar to avoid conflicts with the flush valve.
- (c) Refer to details and elevations on drawings for grab bars at showers and bath tubs.
- (d) Refer also to woodwork details and elevations on drawings.
- (e) Refer also to plumbing specifications Section 15400.



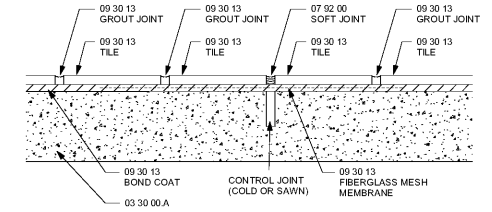
3 DETAIL - TYPICAL TOILET STALL ELEVATIONS
1/2" = 1'-0"



4 DETAIL - TYPICAL FLOOR DRAINS AT SHOWER STALLS
3/4" = 1'-0"



5 DETAIL - TYPICAL CERAMIC TILE FLOOR MARBLE THRESHOLD/ THIN SET
3" = 1'-0"



6 DETAIL - CERAMIC TILE FLOOR CONTROL JOINT
3" = 1'-0"

Order Plans @ WWW.WALDLINE.COM

SA&E PROJECT NUMBER	01-615-056
BID PACKAGE	BP-1
ISSUED FOR CONSTRUCTION	10/15/2019
Southern AE	REVISIONS
7951 Tricon Circle Austell, Ga 30168 (770) 819-7777	R # Doc # Date
architects & engineers	

FACILITY CODE NUMBER: 674-0110
GYMNASIUM/AUDITORIUM FOR:
HEARD COUNTY SCHOOLS
 545 MAIN STREET, FRANKLIN, GA 30217
HEARD COUNTY SCHOOL SYSTEM
 FRANKLIN, GEORGIA

ENLARGED BATHROOM PLANS & DETAILS

	DRAWING NUMBER
	A403