

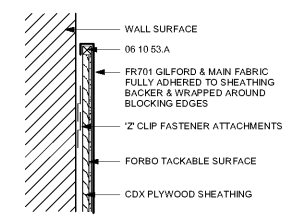
1 TYPICAL SECTION - AUDITORIUM LOBBY CONCRETE BENCH  
3/4" = 1'-0"

2 TYPICAL SECTION - AUDITORIUM LOBBY DISPLAY CASE  
3/4" = 1'-0"

3 TYPICAL SECTION - AUDITORIUM DISPLAY PANELS  
3/4" = 1'-0"

4 TYPICAL SECTION - FURRED-DOWN @ AUDITORIUM CORRIDOR 114  
3/4" = 1'-0"

NOTE:  
CONTRACTOR SHALL CONSIDER CLARIDGE MANUFACTURER FOR TB PANELS. FOR BASIS OF DESIGN PRODUCT, COMPARABLE PRODUCTS BY OTHER MANUFACTURERS WILL BE CONSIDERED FOR APPROVAL BY THE ARCHITECT.



5 FABRIC WRAPPED ART DISPLAY BOARDS  
1 1/2" = 1'-0"

Order Plans

WWW.LDLINE.COM

SA&E PROJECT NUMBER		01-615-056	
BID PACKAGE		BP-1	
ISSUED FOR CONSTRUCTION		10/15/2019	
<b>Southern AE</b> 7951 Truon Circle Austell, Ga 30168 (770) 519-7777 architects & engineers		REVISIONS	
		R #	Doc # Date
		1	AD1 11.4.2019
FACILITY CODE NUMBER: 674-0110 GYMNASIUM/AUDITORIUM FOR: <b>HEARD COUNTY SCHOOLS</b> 545 MAIN STREET, FRANKLIN, GA 30217 <b>HEARD COUNTY SCHOOL SYSTEM</b> FRANKLIN, GEORGIA			
WALL SECTIONS & DETAILS			
DRAWING NUMBER			A313