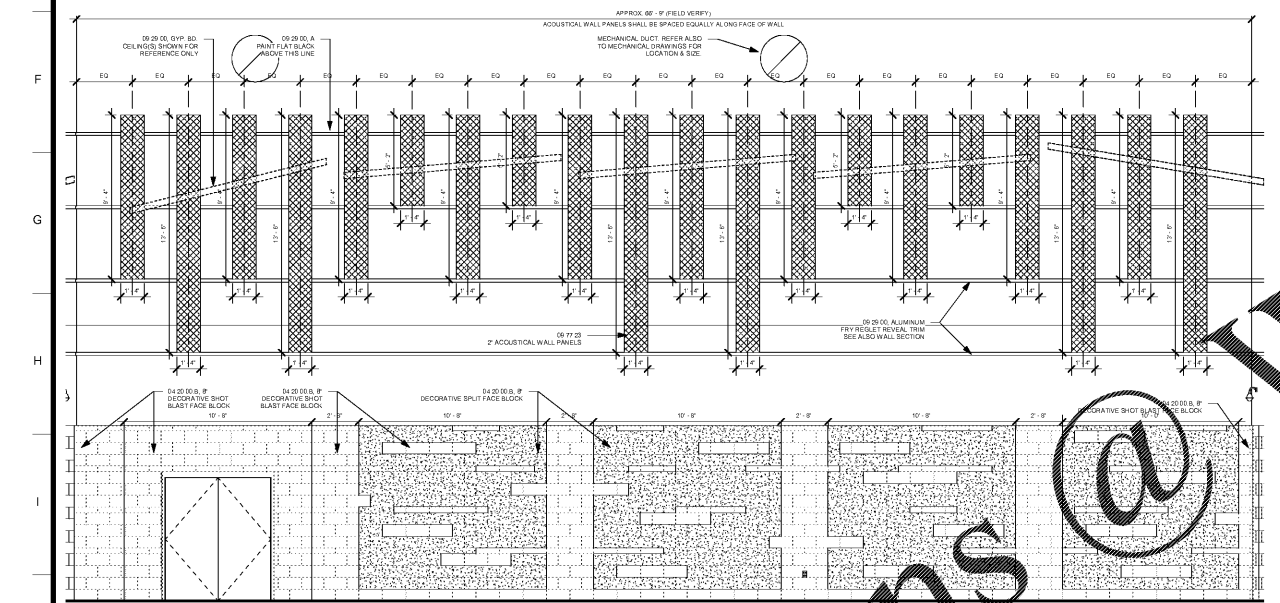


1 INTERIOR ELEVATION - LEVEL 01 - AUDITORIUM THEATER 158 (01)
1/4" = 1'-0"

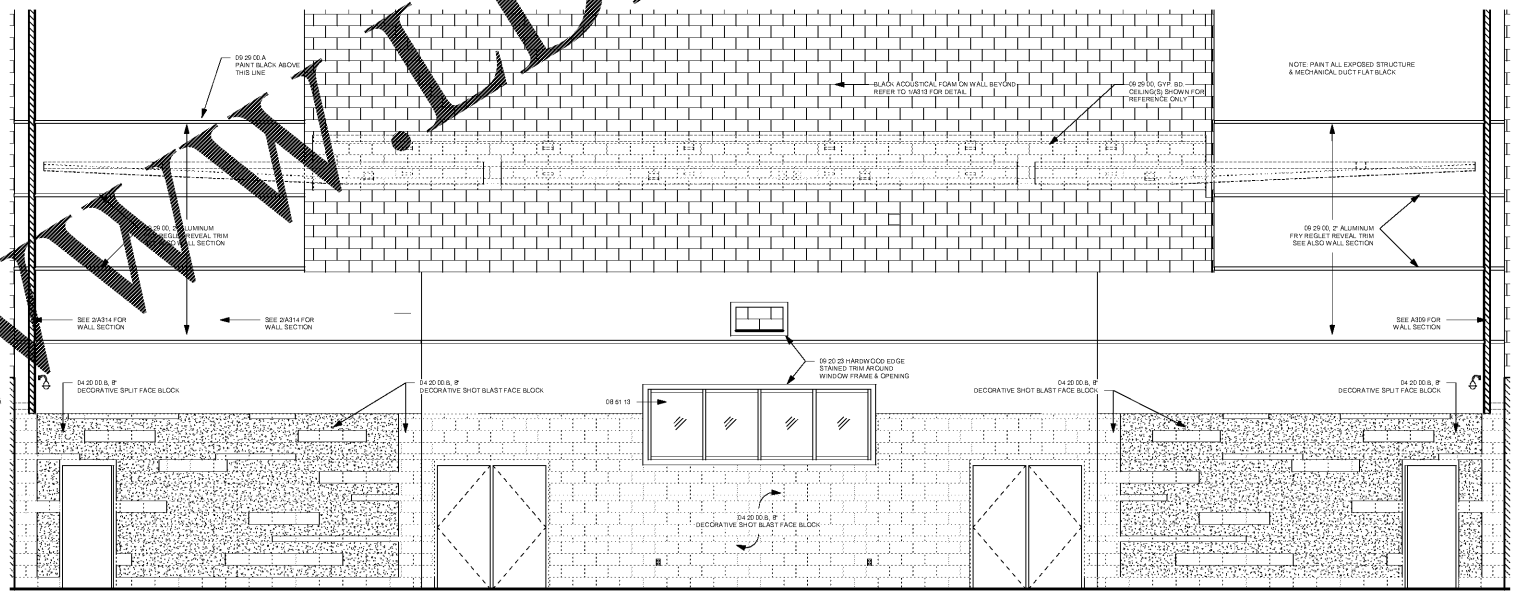
2 INTERIOR ELEVATION - LEVEL 01 - AUDITORIUM THEATER 158 (02)
1/4" = 1'-0"

3 INTERIOR ELEVATION - LEVEL 01 - AUDITORIUM THEATER 158 (03)
1/4" = 1'-0"

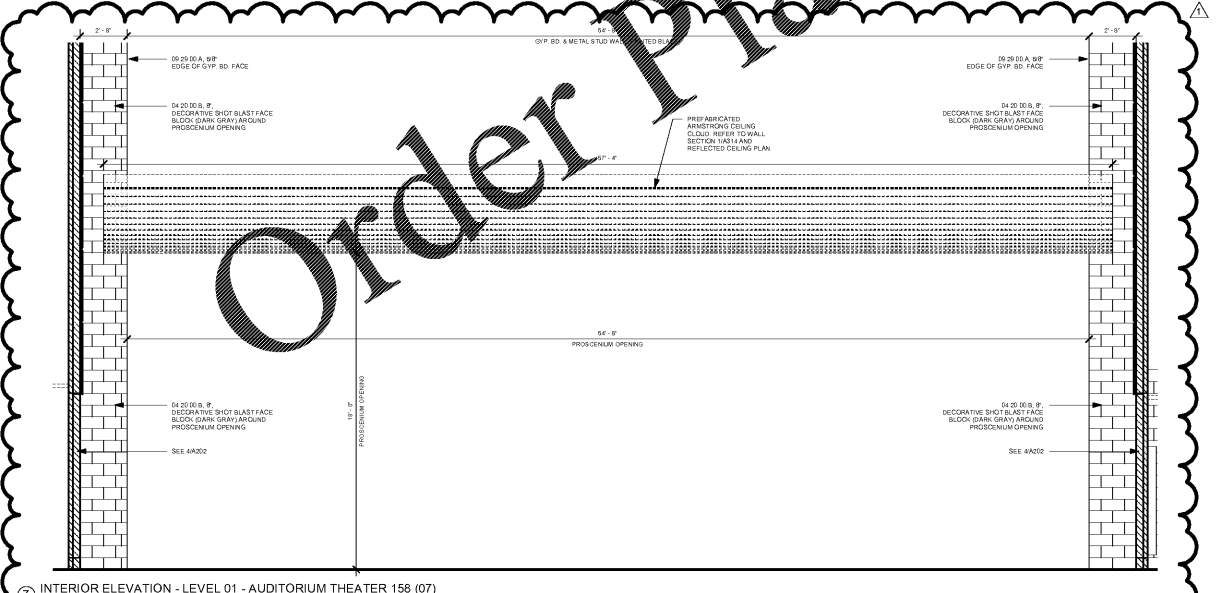
4 INTERIOR ELEVATION - LEVEL 01 - AUDITORIUM THEATER 158 (04)
1/4" = 1'-0"



5 INTERIOR ELEVATION - LEVEL 01 - AUDITORIUM THEATER 158 (05)
1/4" = 1'-0"



6 INTERIOR ELEVATION - LEVEL 01 - AUDITORIUM THEATER 158 (06)
1/4" = 1'-0"



7 INTERIOR ELEVATION - LEVEL 01 - AUDITORIUM THEATER 158 (07)
1/4" = 1'-0"

LEGEND TO INTERIOR ELEVATIONS

NOTE: ALL EXPOSED MECHANICAL DUCT & STRUCTURE TO BE PAINTED FLAT BLACK. FOR DECORATIVE BLOCK COURSING REFER ALSO TO WALL SECTIONS.

	(04 20 00.B) DECORATIVE SPLIT FACE BLOCK
	(09 77 23) 2" THICK ACOUSTICAL WALL PANELS

SA&E PROJECT NUMBER BP-1		01-615-056
ISSUED FOR CONSTRUCTION		10/15/2019
Southern AE 7951 Triton Circle Austell, Ga 30168 (770) 519-7777 architects & engineers		REVISIONS R # Doc # Date 1 AD1 11.4.2019
FACILITY CODE NUMBER: 674-0110 GYMNASIUM/AUDITORIUM FOR: HEARD COUNTY SCHOOLS 545 MAIN STREET, FRANKLIN, GA 30217 HEARD COUNTY SCHOOL SYSTEM FRANKLIN, GEORGIA		
INTERIOR ELEVATIONS		DRAWING NUMBER A202

Order Plans @