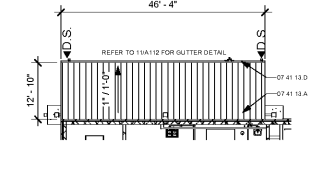


**NOTES & LEGEND TO ROOF PLAN**

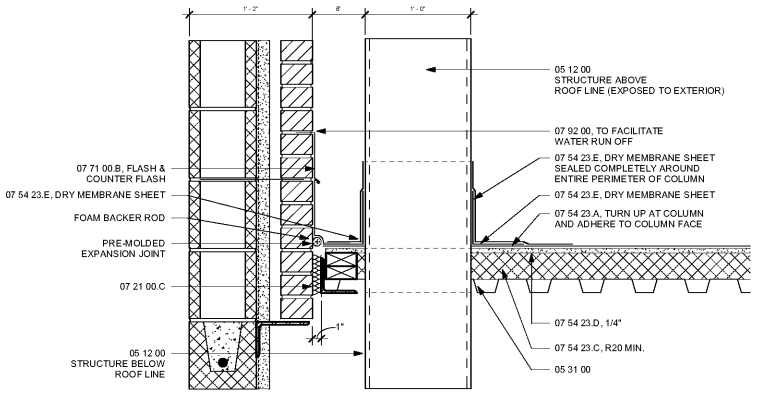
1. Install gutter expansion joints at 40' in center dimensions. Install gutter splice joints at mid-point between expansion joints, and at 40' on center dimensions. Provide minimum 20' long sections of gutter without joints.
2. Coordinate with Mechanical, Plumbing and Electrical Drawings for all roof penetrations.
3. All Equipment mounted on Metal Roof is to be painted to match Roof Panel Colors.
4. Coordinate w/ Civil for type of discharge at each downspout.

- Roof Walk Pads
- Roof - Top Mounted Unit
- Mechanical Exhaust Fan. See Detail 9/A112
- Mechanical Roof Vent. See Detail 4/A112
- Mechanical Fume Hood Exhaust Fan
- Plumbing Roof Vent. See Detail 8/A112
- 4" x 6" Downspout piped away.
- 4" x 6" Downspout with splashblock. See Splashblock Detail 13/A112
- 4" x 6" Downspout splashed to lower roof below.

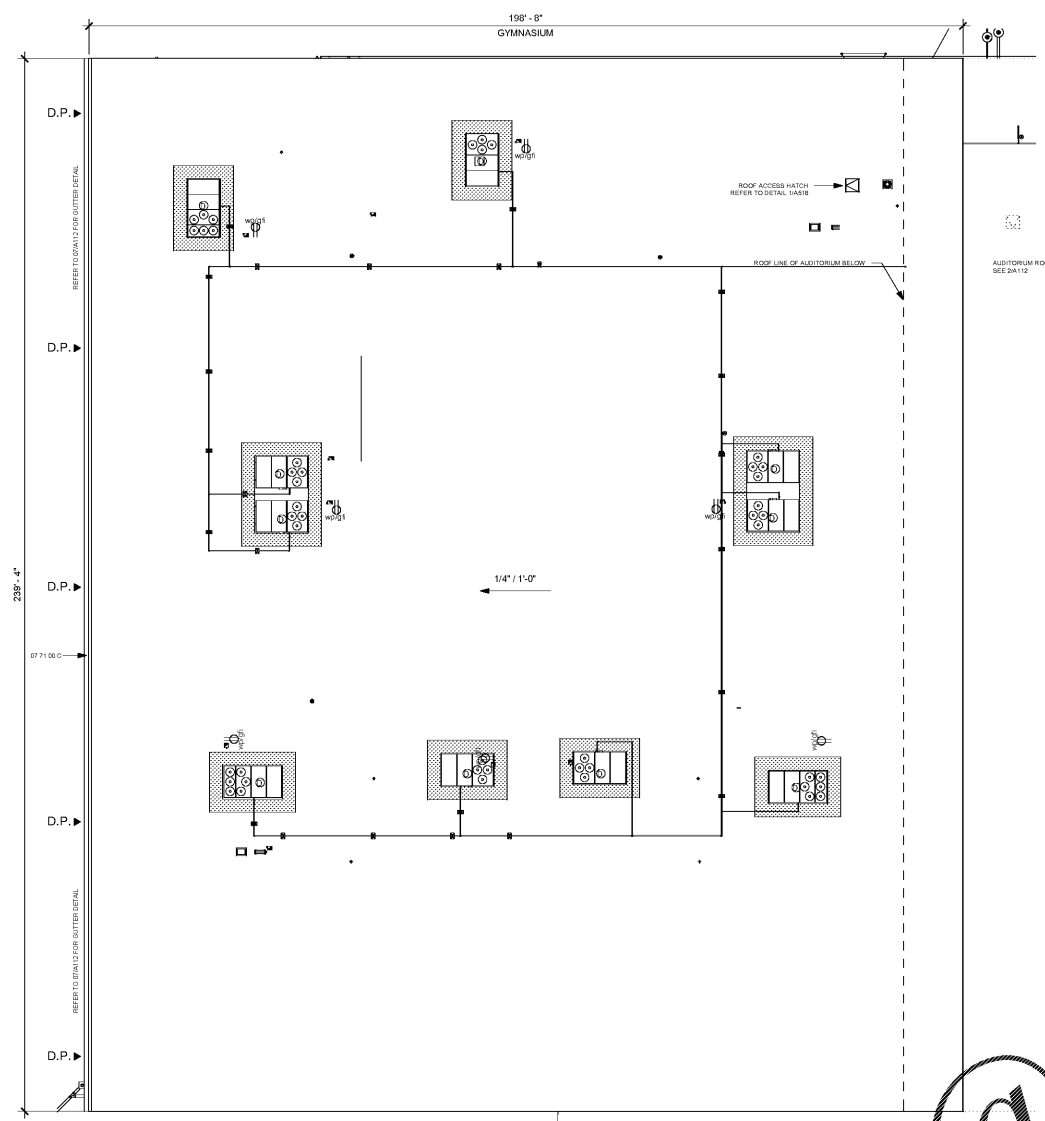


① PARTIAL ROOF PLAN - GYMNASIUM EXTERIOR COOKING AREA  
1/16" = 1'-0"

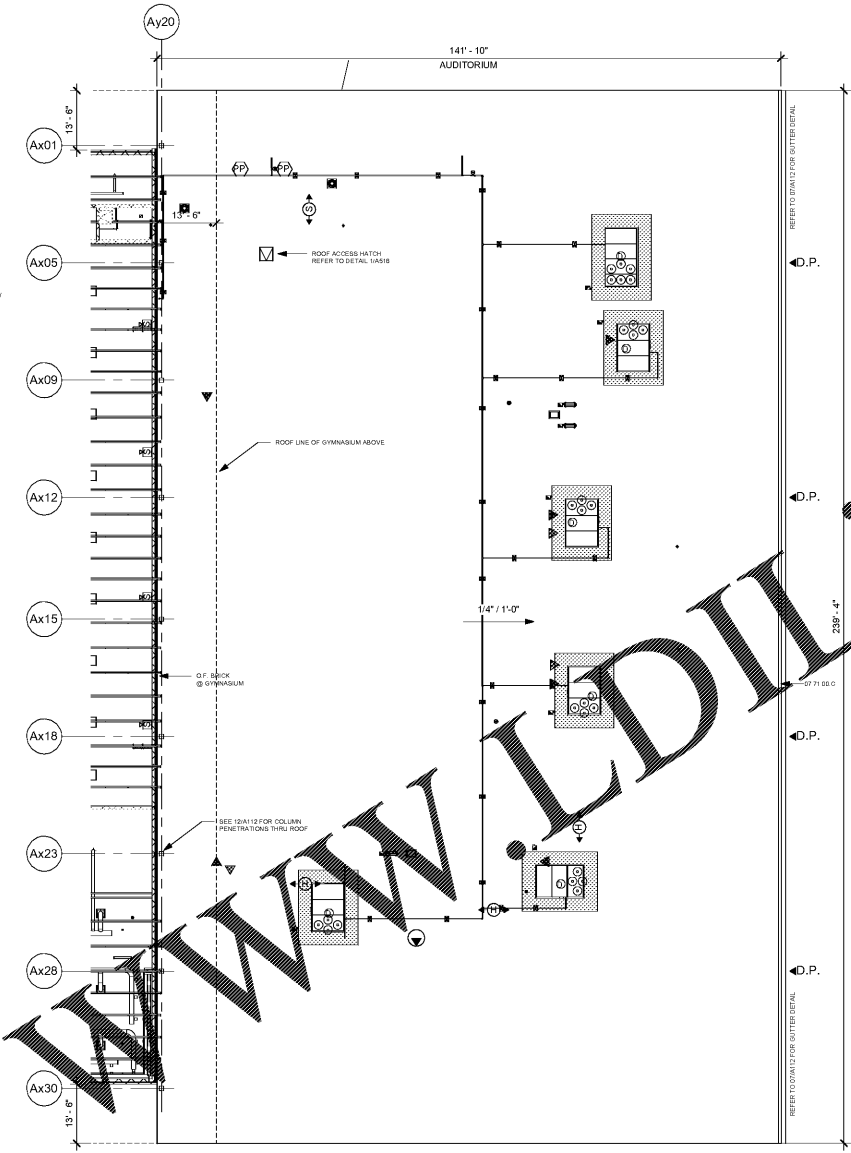
\*NOTE: ALL PENETRATIONS THRU ROOF MUST BE SEALED COMPLETELY TO PROVIDE A WATER TIGHT BARRIER THROUGHOUT.



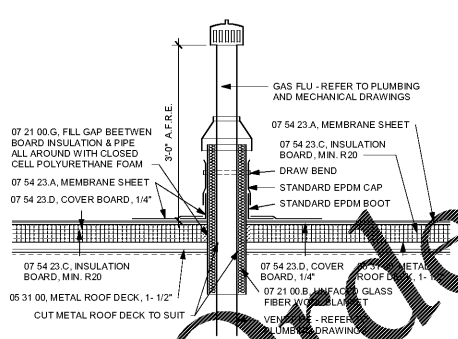
⑫ TYPICAL DETAIL @ EXPOSED COLUMNS THRU AUDITORIUM ROOF  
1 1/2" = 1'-0"



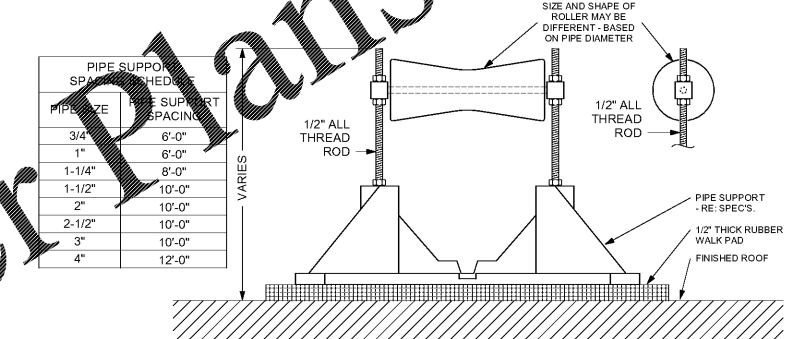
① PARTIAL ROOF PLAN - GYMNASIUM  
1/16" = 1'-0"



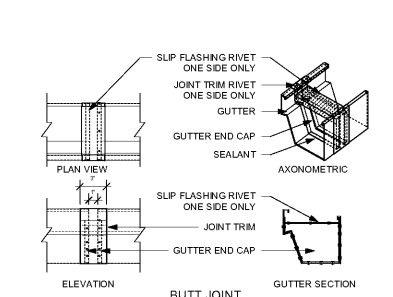
② PARTIAL ROOF PLAN - AUDITORIUM  
1/16" = 1'-0"



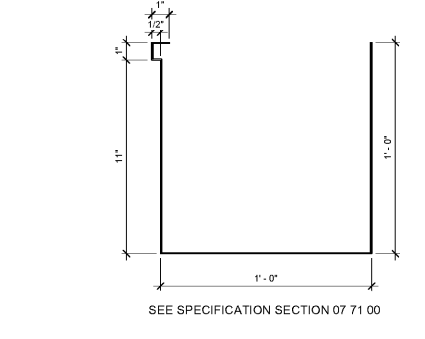
④ TYPICAL GAS FLU THRU THE ROOF  
1" = 1'-0"



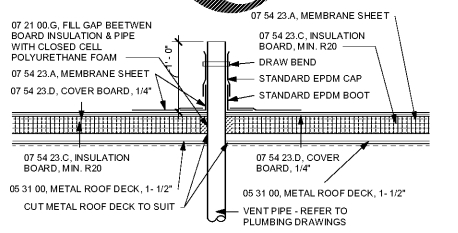
⑤ ROOF PIPE SUPPORT DETAIL  
N.T.S.



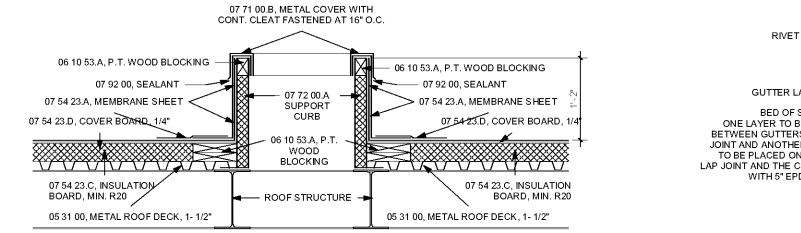
⑥ TYPICAL GUTTER EXPANSION JOINT  
1 1/2" = 1'-0"



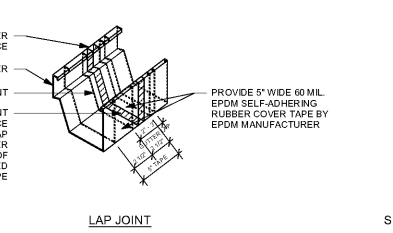
⑦ TYPICAL GUTTER DETAIL @ AUDITORIUM & GYMNASIUM EAVE  
3" = 1'-0"



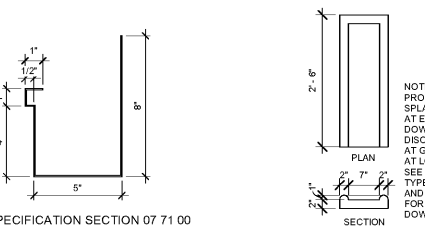
⑧ TYPICAL PLUMBING VENT THRU TPO ROOF  
1" = 1'-0"



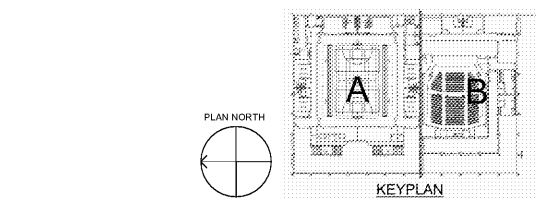
⑨ TYPICAL ROOF EQUIPMENT SUPPORT CURB  
1" = 1'-0"



⑩ TYPICAL GUTTER SPLICE  
1 1/2" = 1'-0"



⑬ TYPICAL SPLASH BLOCK DETAIL  
3/4" = 1'-0"



SA&E PROJECT NUMBER: 01-615-056  
 BID PACKAGE: BP-1  
 ISSUED FOR CONSTRUCTION: 10/15/2019  
**Southern AE**  
 7951 Traxon Circle  
 Austell, Ga 30168  
 (770) 819-7777  
 architects & engineers

FACILITY CODE NUMBER: 674-0110  
**GYMNASIUM/AUDITORIUM FOR:**  
**HEARD COUNTY SCHOOLS**  
 545 MAIN STREET, FRANKLIN, GA 30217  
**HEARD COUNTY SCHOOL SYSTEM**  
 FRANKLIN, GEORGIA

**PARTIAL ROOF PLANS**

DRAWING NUMBER: **A112**

Order Plans @

WWW.LDILine.com