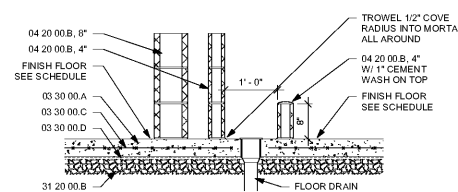
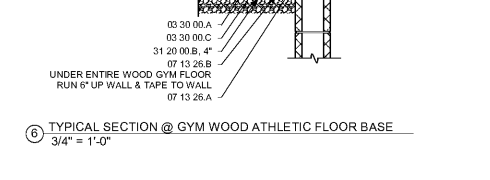
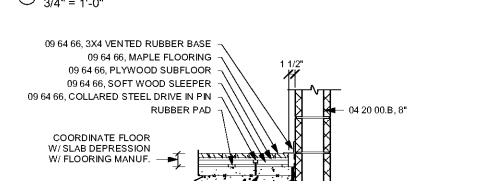
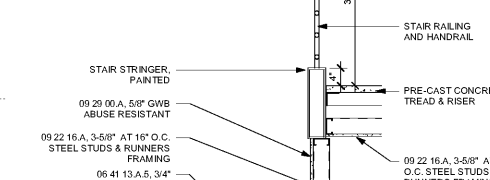
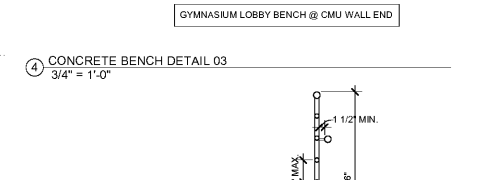
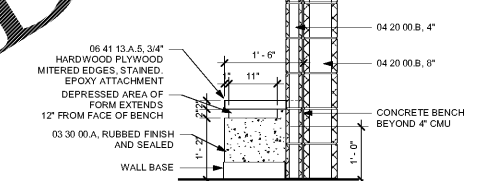
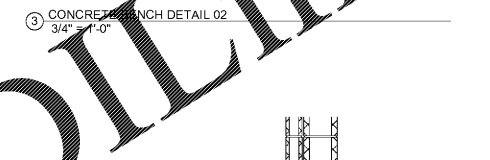
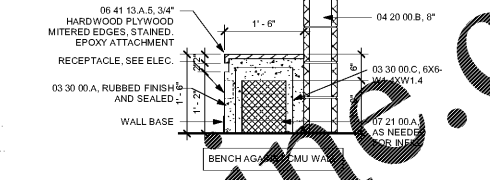
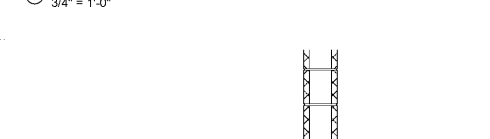
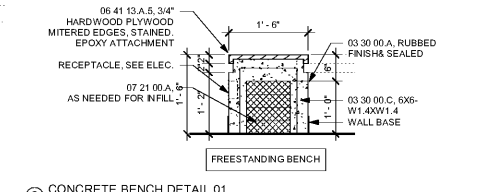


NOTES & LEGEND TO FLOOR PLANS

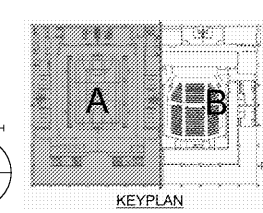
- 1 Refer to Cover Sheet for Keynote List.
- 2 Refer to Reflected Ceiling Plan and/or Life Safety Plan for wall ratings and additional information on walls.
- 3 Refer to Drawing A401-A403 for Enlarged Plans of all Toilets and additional dimensions of these areas.
- 4 Refer to Mechanical Drawings for location and opening requirements for all Thru-wall and Wall-Hung Heat Pumps.
- 5 All doors shown without door number are existing to remain.
- 6 Refer to Civil Drawings for complete sidewalk layout.
- 7 Refer to Interior Design ID Drawings for all floor platen layout.

	New Concrete Block Walls. Dimension from face of wall to face of wall.
	New Steel Walls. Dimensions to center line.
	Existing Walls to remain.
	Room Number. See Finish Schedule.
	New Door Number. See Door and Frame Schedule.
	New Window Number. See Drawing A512 - A514 for elevations.
	Steel Columns Line and / or Steel Frame Line.
	Center of Steel Column and / or Steel Frame.
	Not in Contract.
	Semi-Recessed Fire Extinguisher. See 10 44 16 and Detail 2/A103.
	Surface Mounted Fire Extinguisher. See 10 44 16.
	Post Mounted Door Bumper. See Detail 3/A601 & Door Schedule.



NOTE: BOTTOM OF TRENCH SHALL SLOPE 1/2\"/>

7 TYPICAL SECTION @ FLOOR TRENCH W/ CURB AT COMMERCIAL LAUNDRY 3/4\"/>



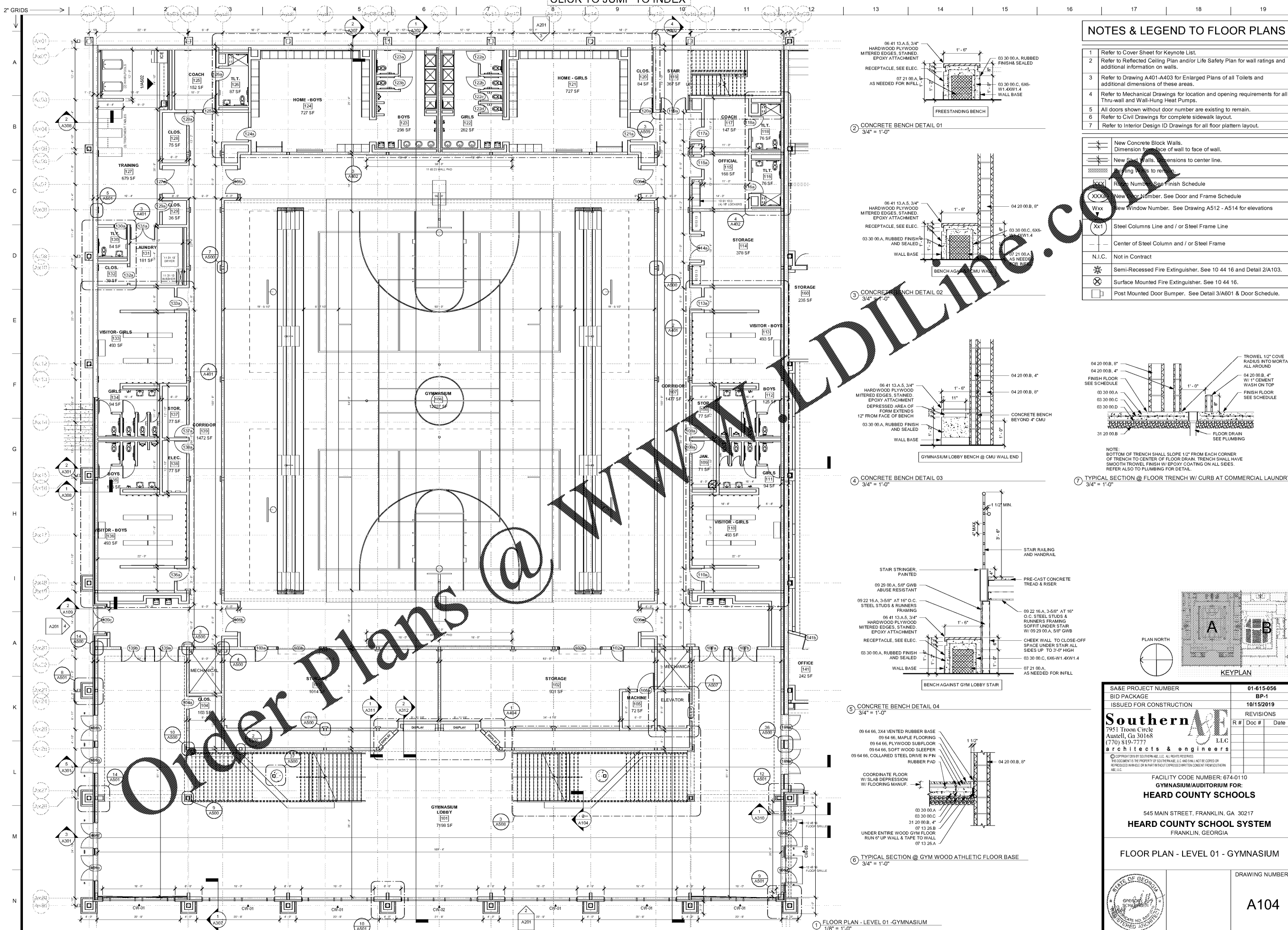
SA&E PROJECT NUMBER	01-615-056
BID PACKAGE	BP-1
ISSUED FOR CONSTRUCTION	10/15/2019
REVISIONS	
R #	Doc #
Date	

Southern AE
 7951 Traxon Circle
 Austell, Ga 30168
 (770) 819-7777
 architects & engineers

FACILITY CODE NUMBER: 674-0110
 GYMNASIUM/AUDITORIUM FOR:
HEARD COUNTY SCHOOLS
 545 MAIN STREET, FRANKLIN, GA 30217
HEARD COUNTY SCHOOL SYSTEM
 FRANKLIN, GEORGIA

FLOOR PLAN - LEVEL 01 - GYMNASIUM

DRAWING NUMBER	A104
----------------	------



Order Plans @ WWW.DLINE.COM