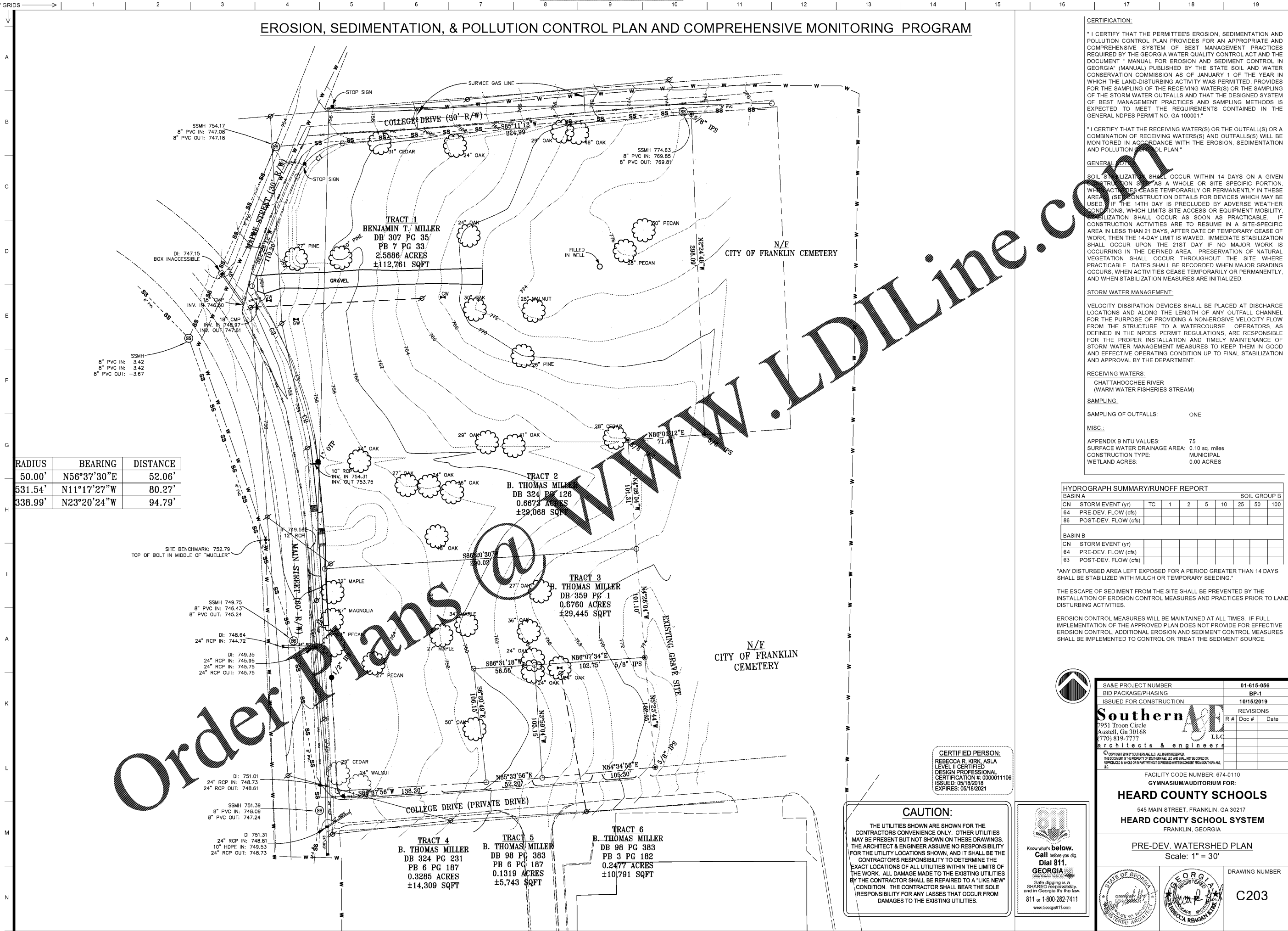


EROSION, SEDIMENTATION, & POLLUTION CONTROL PLAN AND COMPREHENSIVE MONITORING PROGRAM



RADIUS	BEARING	DISTANCE
50.00'	N56°37'30"E	52.06'
531.54'	N11°17'27"W	80.27'
338.99'	N23°20'24"W	94.79'

Order Plans @ www.LDILine.com

CERTIFICATION:
 "I CERTIFY THAT THE PERMITTEE'S EROSION, SEDIMENTATION AND POLLUTION CONTROL PLAN PROVIDES FOR AN APPROPRIATE AND COMPREHENSIVE SYSTEM OF BEST MANAGEMENT PRACTICES REQUIRED BY THE GEORGIA WATER QUALITY CONTROL ACT AND THE DOCUMENT " MANUAL FOR EROSION AND SEDIMENT CONTROL IN GEORGIA" (MANUAL) PUBLISHED BY THE STATE SOIL AND WATER CONSERVATION COMMISSION AS OF JANUARY 1 OF THE YEAR IN WHICH THE LAND-DISTURBING ACTIVITY WAS PERMITTED, PROVIDES FOR THE SAMPLING OF THE RECEIVING WATER(S) OR THE SAMPLING OF THE STORM WATER OUTFALLS AND THAT THE DESIGNED SYSTEM OF BEST MANAGEMENT PRACTICES AND SAMPLING METHODS IS EXPECTED TO MEET THE REQUIREMENTS CONTAINED IN THE GENERAL NDPES PERMIT NO. GA 100001."

"I CERTIFY THAT THE RECEIVING WATER(S) OR THE OUTFALL(S) OR A COMBINATION OF RECEIVING WATER(S) AND OUTFALL(S) WILL BE MONITORED IN ACCORDANCE WITH THE EROSION, SEDIMENTATION AND POLLUTION CONTROL PLAN."

GENERAL NOTE:
 SOIL STABILIZATION SHALL OCCUR WITHIN 14 DAYS ON A GIVEN CONSTRUCTION SITE AS A WHOLE OR SITE SPECIFIC PORTION, WHEN ACTIVITIES CEASE TEMPORARILY OR PERMANENTLY IN THESE AREAS (SEE CONSTRUCTION DETAILS FOR DEVICES WHICH MAY BE USED). IF THE 14TH DAY IS PRECLUDED BY ADVERSE WEATHER CONDITIONS, WHICH LIMITS SITE ACCESS OR EQUIPMENT MOBILITY, STABILIZATION SHALL OCCUR AS SOON AS PRACTICABLE. IF CONSTRUCTION ACTIVITIES ARE TO RESUME IN A SITE-SPECIFIC AREA IN LESS THAN 21 DAYS, AFTER DATE OF TEMPORARY CEASE OF WORK, THEN THE 14-DAY LIMIT IS WAIVED. IMMEDIATE STABILIZATION SHALL OCCUR UPON THE 21ST DAY IF NO MAJOR WORK IS OCCURRING IN THE DEFINED AREA. PRESERVATION OF NATURAL VEGETATION SHALL OCCUR THROUGHOUT THE SITE WHERE PRACTICABLE. DATES SHALL BE RECORDED WHEN MAJOR GRADING OCCURS, WHEN ACTIVITIES CEASE TEMPORARILY OR PERMANENTLY, AND WHEN STABILIZATION MEASURES ARE INITIALIZED.

STORM WATER MANAGEMENT:
 VELOCITY DISSIPATION DEVICES SHALL BE PLACED AT DISCHARGE LOCATIONS AND ALONG THE LENGTH OF ANY OUTFALL CHANNEL FOR THE PURPOSE OF PROVIDING A NON-EROSIVE VELOCITY FLOW FROM THE STRUCTURE TO A WATERCOURSE. OPERATORS, AS DEFINED IN THE NPDES PERMIT REGULATIONS, ARE RESPONSIBLE FOR THE PROPER INSTALLATION AND TIMELY MAINTENANCE OF STORM WATER MANAGEMENT MEASURES TO KEEP THEM IN GOOD AND EFFECTIVE OPERATING CONDITION UP TO FINAL STABILIZATION AND APPROVAL BY THE DEPARTMENT.

RECEIVING WATERS:
 CHATTAHOOCHEE RIVER
 (WARM WATER FISHERIES STREAM)

SAMPLING:
 SAMPLING OF OUTFALLS: ONE

MISC.:
 APPENDIX B NTU VALUES: 75
 SURFACE WATER DRAINAGE AREA: 0.10 sq. miles
 CONSTRUCTION TYPE: MUNICIPAL
 WETLAND ACRES: 0.00 ACRES

HYDROGRAPH SUMMARY/RUNOFF REPORT

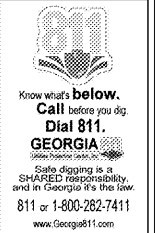
BASIN A		SOIL GROUP B							
CN	STORM EVENT (yr)	TC	1	2	5	10	25	50	100
64	PRE-DEV. FLOW (cfs)								
86	POST-DEV. FLOW (cfs)								

BASIN B	
CN	STORM EVENT (yr)
64	PRE-DEV. FLOW (cfs)
63	POST-DEV. FLOW (cfs)

"ANY DISTURBED AREA LEFT EXPOSED FOR A PERIOD GREATER THAN 14 DAYS SHALL BE STABILIZED WITH MULCH OR TEMPORARY SEEDING."
 THE ESCAPE OF SEDIMENT FROM THE SITE SHALL BE PREVENTED BY THE INSTALLATION OF EROSION CONTROL MEASURES AND PRACTICES PRIOR TO LAND DISTURBING ACTIVITIES.
 EROSION CONTROL MEASURES WILL BE MAINTAINED AT ALL TIMES. IF FULL IMPLEMENTATION OF THE APPROVED PLAN DOES NOT PROVIDE FOR EFFECTIVE EROSION AND SEDIMENT CONTROL MEASURES SHALL BE IMPLEMENTED TO CONTROL OR TREAT THE SEDIMENT SOURCE.

CERTIFIED PERSON:
 REBECCA R. KIRK, ASLA
 LEVEL II CERTIFIED
 DESIGN PROFESSIONAL
 CERTIFICATION #: 0000011106
 ISSUED: 05/18/2018
 EXPIRES: 05/18/2021

CAUTION:
 THE UTILITIES SHOWN ARE SHOWN FOR THE CONTRACTORS CONVENIENCE ONLY. OTHER UTILITIES MAY BE PRESENT BUT NOT SHOWN ON THESE DRAWINGS. THE ARCHITECT & ENGINEER ASSUME NO RESPONSIBILITY FOR THE UTILITY LOCATIONS SHOWN, AND IT SHALL BE THE CONTRACTOR'S RESPONSIBILITY TO DETERMINE THE EXACT LOCATIONS OF ALL UTILITIES WITHIN THE LIMITS OF THE WORK. ALL DAMAGE MADE TO THE EXISTING UTILITIES BY THE CONTRACTOR SHALL BE REPAIRED TO A "LIKE NEW" CONDITION. THE CONTRACTOR SHALL BEAR THE SOLE RESPONSIBILITY FOR ANY LOSSES THAT OCCUR FROM DAMAGES TO THE EXISTING UTILITIES.



SA&E PROJECT NUMBER	01-615-056
BID PACKAGE/PHASING	BP-1
ISSUED FOR CONSTRUCTION	10/15/2019
REVISIONS	
R #	Doc # Date

FACILITY CODE NUMBER: 674-0110
GYMNASIUM/AUDITORIUM FOR:
HEARD COUNTY SCHOOLS
 545 MAIN STREET, FRANKLIN, GA 30217
HEARD COUNTY SCHOOL SYSTEM
 FRANKLIN, GEORGIA

PRE-DEV. WATERSHED PLAN
 Scale: 1" = 30'

DRAWING NUMBER
C203