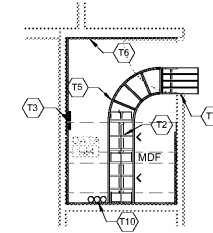
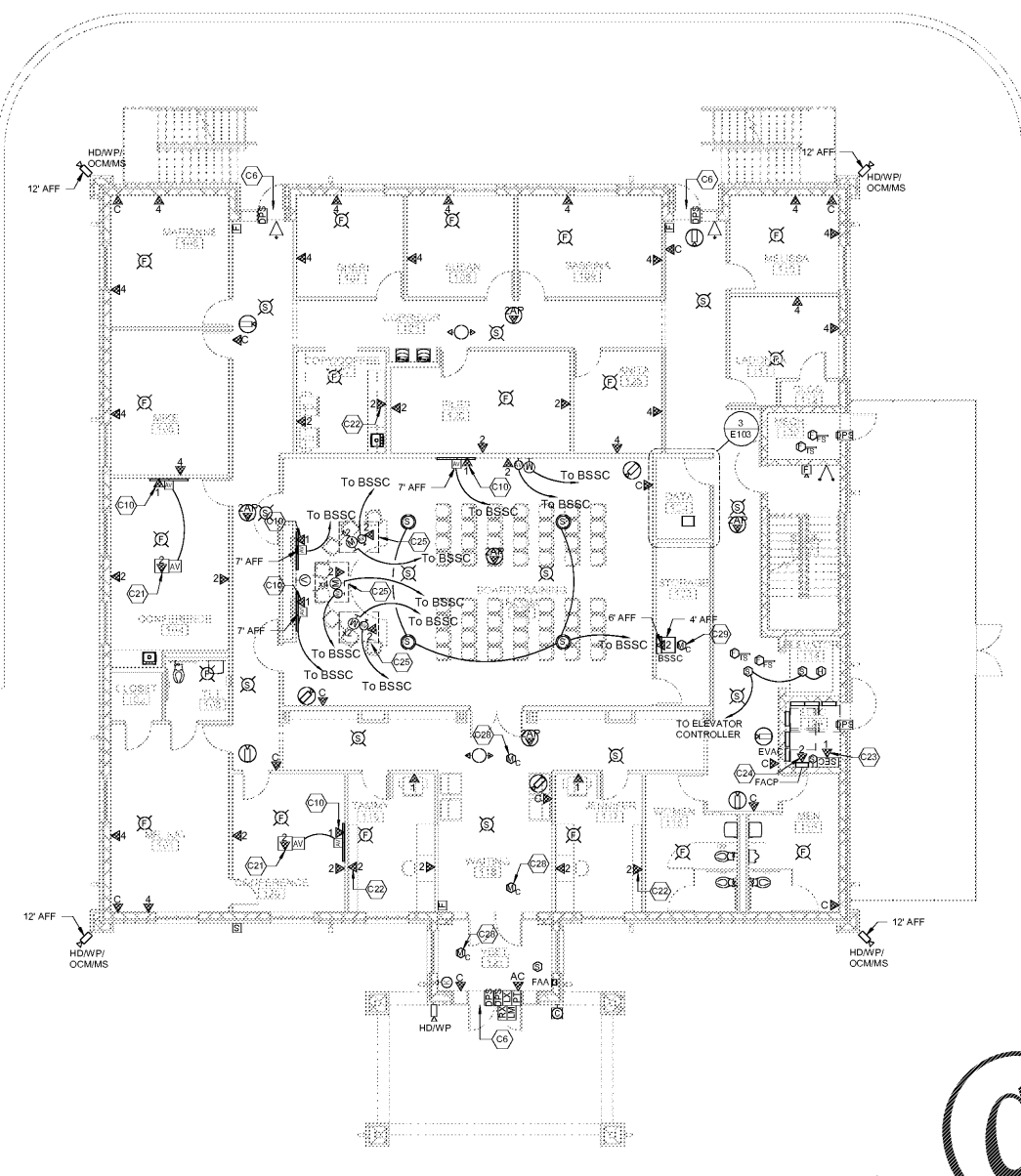


TELECOMMUNICATIONS KEYNOTE SCHEDULE	
#	KEYNOTE DESCRIPTION
T2	FLOOR MOUNTED TELECOMMUNICATIONS EQUIPMENT RACK, 2-POST OR 4-POST AS INDICATED, WITH VERTICAL AND HORIZONTAL CABLE MANAGEMENT. REFER TO RACK ELEVATIONS AND DIVISION 27 SPECIFICATIONS. COORDINATE EXACT LOCATION RACK LAYOUT AND.
T3	TELECOMMUNICATIONS MAIN GROUNDING BUSBAR (TMGB) MOUNTED 7'-0" AFF. REFER TO TELECOMMUNICATIONS GROUNDING ONE-LINE & SECTION 26 05 26. PROVIDE BONDING CONDUCTOR TO ALL RACKS AND EQUIPMENT IN THIS SPACE.
T5	18" LADDER CABLE TRAY INSTALLED AT 90° ABOVE FINISHED FLOOR. PROVIDE LADDER RACK TO EQUIPMENT CABINET BRACINGS AND CABLE DROP OUTS AT EACH RACK, OR AS SHOWN ON EQUIPMENT RACK ELEVATIONS.
T6	FIRE RATED 3/4" x 6'-0" GRADE A/C PLYWOOD INSTALLED ON ALL WALLS IN THIS SPACE. PAINT FRONT SIDE AND ALL EDGES WITH LIGHT COLORED FIRE RETARDANT PAINT. PROVIDE OUTLET BOX EXTENSION RING AS REQUIRED FOR DEVICES INSTALLED IN WALLS TO RECEIVE PLYWOOD TO BRING THE FACE FLUSH WITH WOOD SURFACE.
T7	CORED HOLES THROUGH MASONRY WALL WITH 4" SLEEVES INSTALLED ABOVE FINISHED CEILING. INSTALL BONDING BUSHINGS ON EACH SLEEVE AND BOND TO LADDER RACK AND/OR CABLE TRAY ON EACH SIDE OF WALL. IF PRESENT, FIRE-STOP ALL PENETRATIONS PER SECTION 07 05 00. FOR EACH SLEEVE SHOWN, PROVIDE ONE 4" C SLEEVE (12" LONG) THRU SUSPENDED CEILING FOR PASSAGE OF CABLE TO LADDER RACK. SECURE SLEEVES TO WALL WITH UNISTRUT AND CLAMPS. INSTALL BONDING BUSHING ON EACH SLEEVE AND BOND TO TSB/TMGB.
T10	TELECOMMUNICATIONS CONDUIT FROM ROOM TO UTILITY ENTRANCE CABLING. REFER TO SITE PLAN.

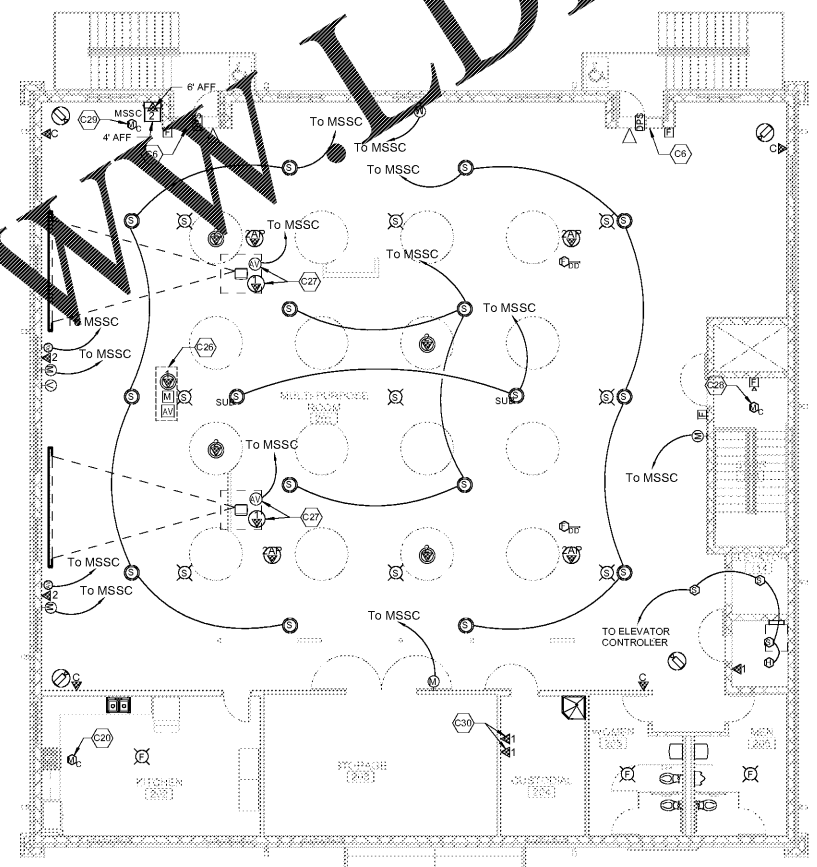


SPECIAL SYSTEMS KEYNOTE SCHEDULE	
#	KEYNOTE DESCRIPTION
C6	AT THIS OPENING, PROVIDE CONDUIT AND BOXES FOR ACCESS CONTROL DOOR ROUGH-IN, PER DETAIL.
C10	DATA DROP INSTALLED IN RECESSED DISPLAY WALLBOX.
C20	FIRE ALARM SYSTEM RELAY MODULE CONNECTED TO HOOD FIRE SUPPRESSION SYSTEM.
C21	DATA DROPS INSTALLED IN FLOOR BOX COMMON WITH RECEPTACLES AND A/V CONNECTIONS.
C22	DATA DROPS INSTALLED ABOVE COUNTERTOP. COORDINATE MOUNTING HEIGHT WITH ARCHITECTURAL DRAWINGS AND MILLWORK SHOP DRAWINGS.
C23	DATA DROP INSTALLED INSIDE SECURITY PANEL.
C24	DATA DROPS INSTALLED INSIDE FIRE ALARM CONTROL PANEL.
C25	DATA, A/V AND MICROPHONE OUTLETS INSTALLED IN BOARDROOM MILLWORK. REFER TO SPECS & DETAIL FOR INSTALLATION METHOD.
C26	INSTALL DEVICES IN COMMON POKE THRU WITH RECEPTACLES AT THIS LOCATION.
C27	DATA AND A/V CONNECTIONS SHALL BE INSTALLED IN RECESSED CEILING ENCLOSURE. COORDINATE EXACT LOCATION OF CEILING ENCLOSURE AND ALL OUTLETS INSTALLED WITHIN WITH A/V CONTRACTOR PRIOR TO INSTALLATION.
C28	FIRE ALARM CONTROL MODULE FOR OCCUPANCY SENSOR OVERRIDE.
C29	FIRE ALARM CONTROL MODULE FOR MUTING OF SOUND SYSTEM UPON ACTIVATION OF THE FIRE ALARM SYSTEM.
C30	INSTALL DATA DROPS INSIDE HVAC CONTROL PANELS.

3 LEVEL 01 - ENLARGED DATA ROOM PLAN  
1/4" = 1'-0"

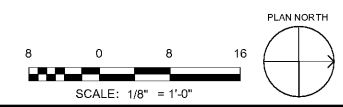


1 LEVEL 01 - SPECIAL SYSTEMS PLAN  
1/8" = 1'-0"



2 LEVEL 02 - SPECIAL SYSTEMS PLAN  
1/8" = 1'-0"

Order Plans @ WWW.DILine.com



SA&E PROJECT NUMBER	01-615-057
BID PACKAGE / PHASING	BP-1
ISSUED FOR CONSTRUCTION	10/15/2019
<b>Southern AE</b> 7951 Tricon Circle Austell, Ga 30168 (770) 519-7777 architects & engineers	REVISIONS
	R # Doc # Date
<small>© COPYRIGHT 2019 BY SOUTHERN A/E, LLC. ALL RIGHTS RESERVED.                  THIS DOCUMENT IS THE PROPERTY OF SOUTHERN A/E, LLC AND SHALL NOT BE COPIED OR REPRODUCED IN WHOLE OR IN PART WITHOUT EXPRESS WRITTEN PERMISSION FROM SOUTHERN A/E, LLC.</small>	

ADD ALTERNATE #1  
BOARD OF EDUCATION OFFICE FOR:  
**HEARD COUNTY SCHOOLS**  
4647 PEA RIDGE ROAD, FRANKLIN, GA 30217  
HEARD COUNTY SCHOOL SYSTEM  
FRANKLIN, GEORGIA

SPECIAL SYSTEMS PLAN

		DRAWING NUMBER
		E103