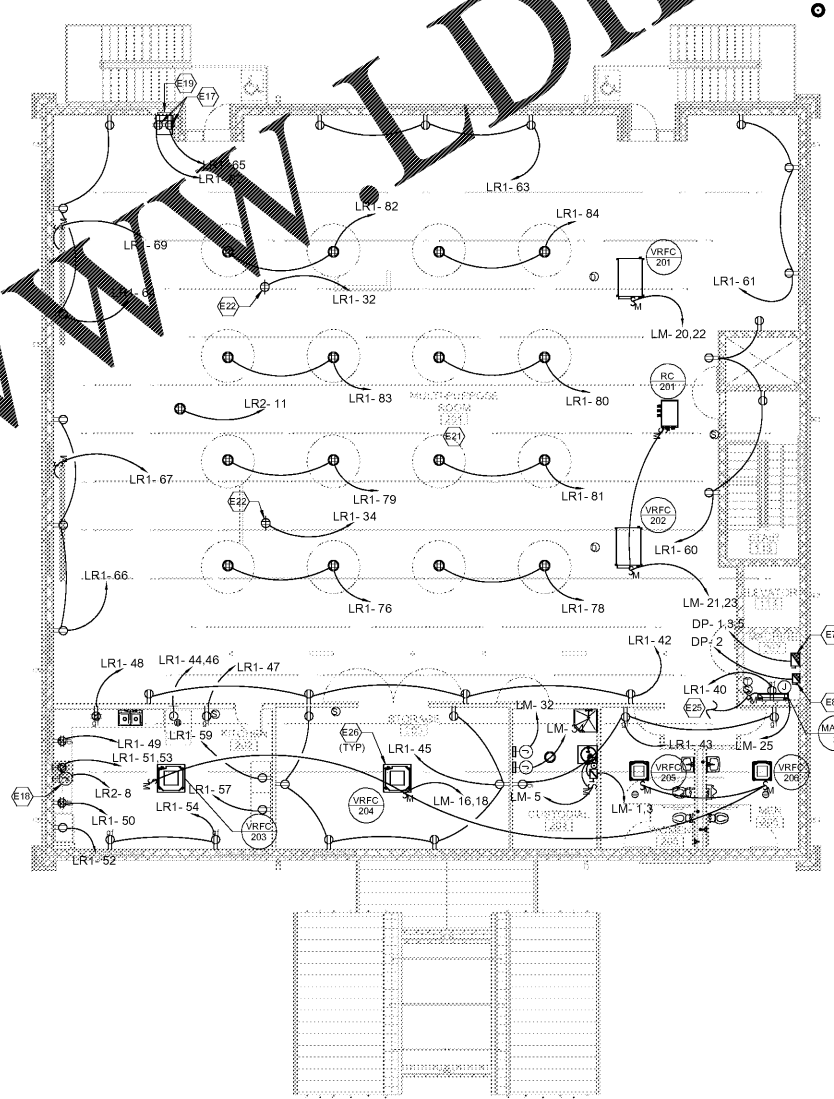


1 LEVEL 01 - POWER PLAN
1/8" = 1'-0"

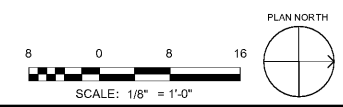
#	KEYNOTE DESCRIPTION
E7	240V/50/200A FUSED DISCONNECT IN NEMA 3R ENCLOSURE FOR ELEVATOR MACHINE SERVICE DISCONNECT. PROVIDE AUXILIARY CONTACTS FOR SAFETY RETURN OVERRIDE CONNECTION. FUSE PER ELEVATOR MACHINE MAXIMUM OCCURRENT PROTECTIVE DEVICE RATING. PROVIDE NAMEPLATE WHICH READS: "ELEVATOR DISCONNECT".
E8	240V/50/200A FUSED DISCONNECT IN NEMA 3R ENCLOSURE FOR ELEVATOR CAB LIGHTS AND FAN. PROVIDE LABEL WHICH READS: "ELEVATOR CAB LIGHTS".
E11	DUPLEX RECEPTACLE AT THIS LOCATION SHALL BE INSTALLED IN RECESSED DISPLAY WALL BOX AT 7' AFF U.O.N.
E17	QUAD RECEPTACLE INSTALLED 6" AFF INSIDE SOUND SYSTEM WALL MOUNTED EQUIPMENT CABINET.
E18	POWER FOR RANGE HOOD LIGHTS AND FAN. REFER TO DETAIL.
E19	18"X12"X4" JUNCTION BOX WITH SCREW ON COVER INSTALLED FLUSH IN WALL BEHIND SOUND SYSTEM CABINET. PROVIDE (2)3" HOLES WITH BUSHINGS IN COVER FOR CABLE PASS THRU.
E20	QUAD RECEPTACLE INSTALLED IN BOARDROOM MILLWORK.
E21	COORDINATE EXACT LOCATION OF ALL POKETHRUS IN THIS SPACE WITH OWNER PRIOR TO CORE DRILLING FLOOR.
E22	RECEPTACLE INSTALLED IN RECESSED CEILING ENCLOSURE.
E23	DUPLEX RECEPTACLE INSTALLED HORIZONTALLY FLUSH IN COUNTERTOP BACKSPLASH.
E24	PROVIDE LS-30 RECEPTACLE AT THIS LOCATION.
E25	PROVIDE POWER AND CONTROL CONNECTION BETWEEN INDOOR AND OUTDOOR UNIT. REFER TO DETAIL.
E26	PROVIDE CONNECTION TO IONIZATION UNIT INSTALLED INSIDE VRF CASSETTE OR DUCTED UNIT. POWER IONIZATION UNIT FROM 208V CIRCUIT FEEDING CASSETTE OR DUCTED UNIT. COORDINATE CONNECTION WITH MECHANICAL CONTRACTOR.



2 LEVEL 02 - POWER PLAN
1/8" = 1'-0"

Order Plans @ WWW.LDILine.com

WWW.LDILine.com



S&E PROJECT NUMBER	01-615-057
BID PACKAGE / PHASING	BP-1
ISSUED FOR CONSTRUCTION	10/15/2019
REVISIONS	
R #	Doc #
Date	

Southern AE
7951 Traxon Circle
Austell, Ga 30168
(770) 519-7777
architects & engineers

ADD ALTERNATE #1
BOARD OF EDUCATION OFFICE FOR:
HEARD COUNTY SCHOOLS
4647 PEA RIDGE ROAD, FRANKLIN, GA 30217
HEARD COUNTY SCHOOL SYSTEM
FRANKLIN, GEORGIA

POWER PLAN	
DRAWING NUMBER	E102

