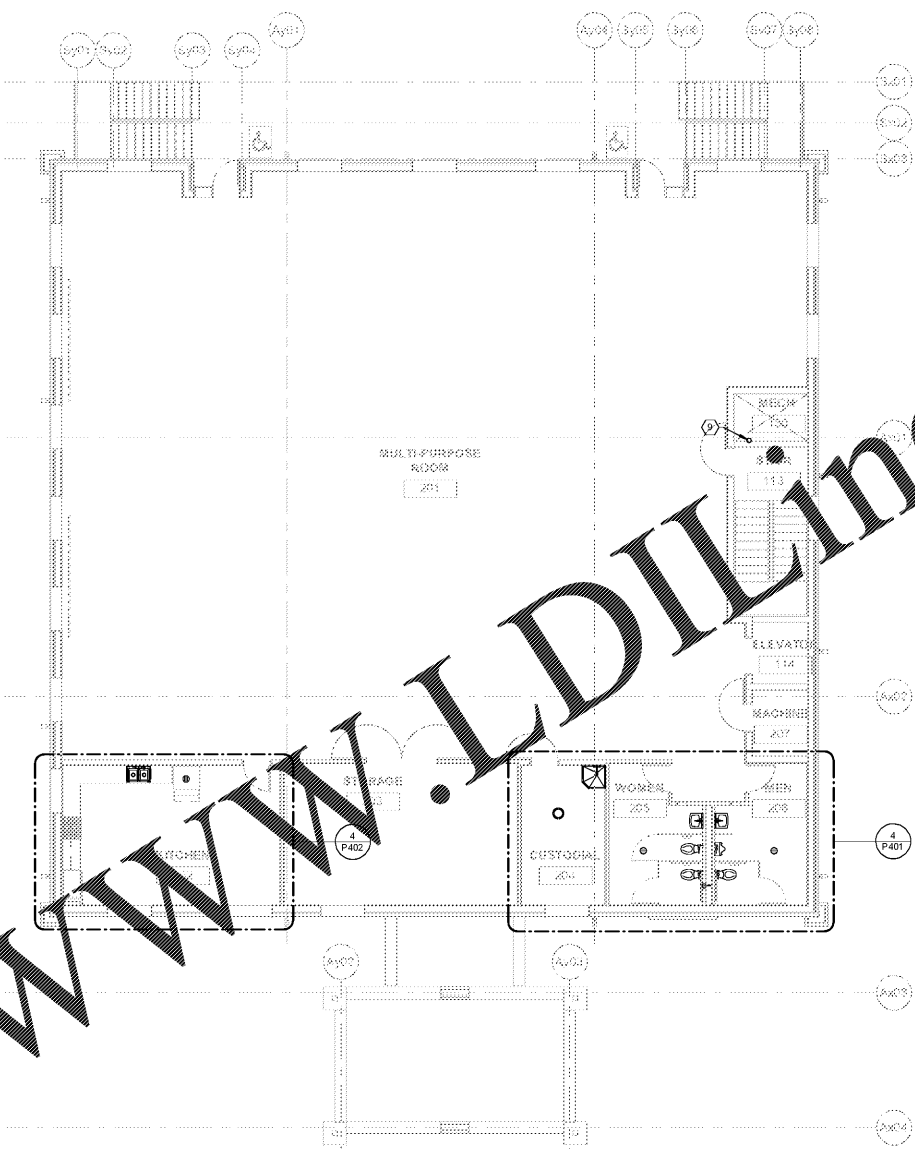


1 PLUMBING FLOOR PLAN - LOWER LEVEL  
1/8" = 1'-0"



2 PLUMBING FLOOR PLAN - UPPER LEVEL  
1/8" = 1'-0"

SPECIFIC PLUMBING PLAN NOTES - P101

- 1 4" SAN. WASTE LINE-RE: 1U101 FOR CONTINUATION.
- 2 4" FCO-2-RE: SPEC'S. AND DETAIL 1/P501.
- 3 DOMESTIC WATER LINE-RE: 1U101 FOR CONTINUATION.
- 4 6" FIRE PROTECTION LINE-RE: 1U101 FOR CONTINUATION.
- 5 3/4" C.W. LINE DOWN.
- 6 3/4" C.W. LINE UP TO FLOOR ABOVE.
- 7 ELEVATOR SUMP PUMP - RE: SPEC'S. AND DETAIL 6/P501. EXTEND 1 1/2" TYPE "L" COPPER PIPE UP FROM SUMP PUMP TO ABOVE CEILING LEVEL - LOCATE PIPE TO AVOID ELEVATOR AND ELEVATOR SERVICES AND APPURTENANCES.
- 8 1 1/2" TYPE "L" COPPER SUMP PUMP CHARGE LINE ABOVE CEILING.
- 9 2" VENT LINE UP FROM FLOOR BELOW TO 2" V.T.R. SECURE PIPING TO WALL TO MAKE RIGID.
- 10 1" MED. PRESSURE (5 PSI) GAS LINE TO GAS METER-RE: 1U101 FOR CONTINUATION.
- 11 G.P.R.-RE: SPEC'S. SCHEDULE, AND DETAIL 8/P502.
- 12 1" LOW PRESSURE (7" WC) GAS LINE UP FROM BELOW GRADE AND CONNECTION TO GAS MOUNTED UNIT-RE: DETAIL 7/P502.
- 13 PROPOSED LOCATION OF GAS METER ASSEMBLY - COORDINATE WITH LOCAL GAS COMPANY. ENTIRE METER ASSEMBLY SHALL BE IN ACCORDANCE WITH THE REQUIREMENTS OF THE LOCAL GAS COMPANY. METER SHALL SUPPLY 5 PSI GAS PRESSURE TO BUILDING GAS PIPING SYSTEM. PRESSURE SHALL BE REDUCED TO 7" W.C. BY GAS PRESSURE REGULATORS PRIOR TO ENTERING THE BUILDING AND CONNECTION TO ANY PIECE OF EQUIPMENT. ESTIMATED LOADS AS FOLLOWS:  
BUILDING HEATING LOADS: 80,000 BTUH
- 14 GAS PIPING BELOW FINISHED GRADE.

Order Plans @

WWW.LDILINE.COM

SA&E PROJECT NUMBER	01-615-057
BID PACKAGE / PHASING	BP-1
ISSUED FOR CONSTRUCTION	10/15/2019
REVISIONS	
R #	Doc # Date

ADD ALTERNATE #1  
BOARD OF EDUCATION OFFICE FOR:  
**HEARD COUNTY SCHOOLS**  
4647 PEA RIDGE ROAD, FRANKLIN, GA 30217  
HEARD COUNTY SCHOOL SYSTEM  
FRANKLIN, GEORGIA

PLUMBING FLOOR PLANS

	DRAWING NUMBER <b>P101</b>
--	-------------------------------