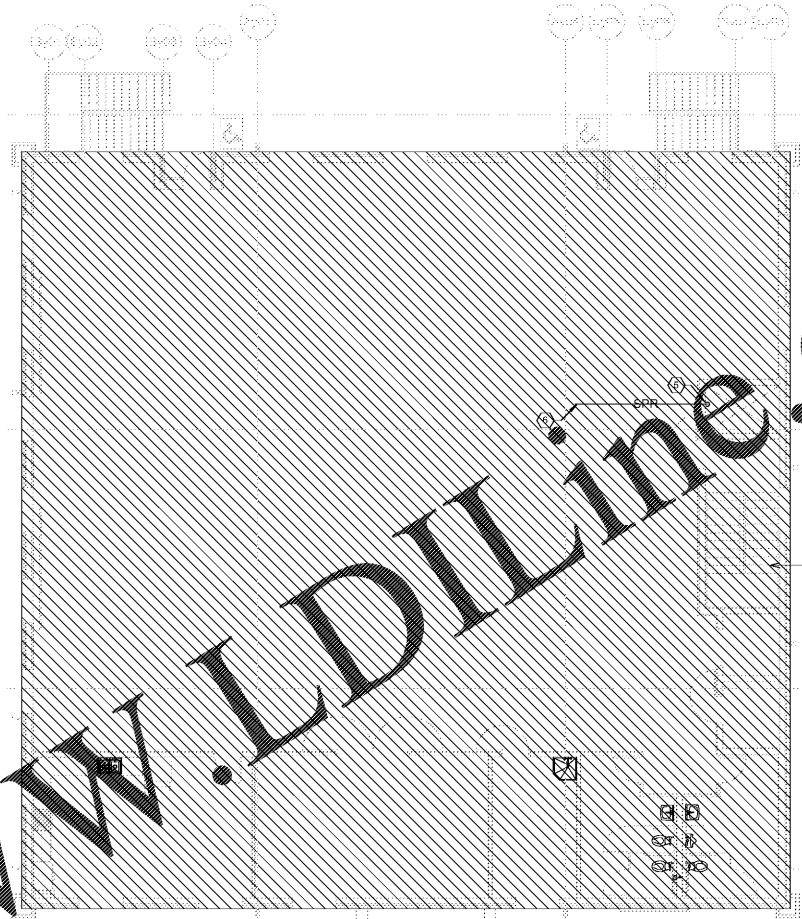


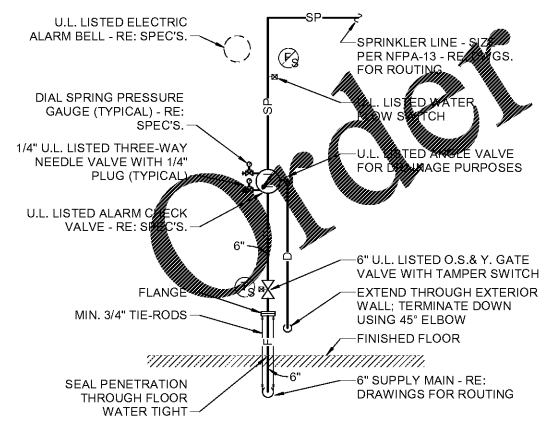
1 FIRE PROTECTION FLOOR PLAN - LOWER LEVEL
1/8" = 1'-0"



2 FIRE PROTECTION FLOOR PLAN - UPPER LEVEL
1/8" = 1'-0"

PROVIDE AUTOMATIC WET PIPE SPRINKLER SYSTEM SIZED PER NFPA-13 TO SPRINKLE ENTIRE HATCHED AREA--RE: SPEC'S.

PROVIDE AUTOMATIC WET PIPE SPRINKLER SYSTEM SIZED PER NFPA-13 TO SPRINKLE ENTIRE HATCHED AREA--RE: SPEC'S.



3 FIRE RISER DETAIL
NTS

SPECIFIC FIRE PROTECTION NOTES - F101

- 1 U.L. LISTED ELECTRIC ALARM BELL - RE: SPEC'S.
- 2 WET PIPE SPRINKLER RISER - SIZE TO SPRINKLE ENTIRE SPRINKLER AREA - PROVIDE ALL ITEMS REQUIRED PER NFPA-13 - RE: SPEC'S. RE: DETAIL 1/101.
- 3 WET PIPE SPRINKLER LINE - SIZE PER NFPA-13 TO SPRINKLE ENTIRE LOWER LEVEL.
- 4 WET PIPE SPRINKLER LINE UP TO FLOOR ABOVE- SIZE PER NFPA-13 TO SPRINKLE ENTIRE UPPER LEVEL.
- 5 WET PIPE SPRINKLER LINE UP FROM FLOOR BELOW- SIZE PER NFPA-13 TO SPRINKLE ENTIRE UPPER LEVEL.
- 6 WET PIPE SPRINKLER LINE - SIZE PER NFPA-13 TO SPRINKLE ENTIRE UPPER LEVEL.

NOTE: DO NOT LOCATE ANY WET PIPE SPRINKLER PIPING IN AREAS SUBJECT TO FREEZING

NOTE: 120-3-3.04 MODIFICATIONS TO NFPA-13 REQUIRE A 10 PSI CUSHION - PROVIDE AS PART OF DESIGN CALCULATIONS

NOTE: CONTRACTOR RESPONSIBLE FOR OBTAINING WATER FLOW TEST WITNESSED BY THE LOCAL FIRE OFFICIAL WITHIN 6 MONTHS OF PLAN SUBMITTAL FOR STATE REVIEW

NOTE: PLANS BY INSTALLING CONTRACTOR ARE REQUIRED FOR FIRE SPRINKLER REVIEW INCLUDING SHOP DRAWINGS, HYDRAULIC CALCULATIONS, ETC.

THE FIRE PROTECTION PLANS AND SPECIFICATIONS PROVIDED ARE PERFORMANCE BASED. IT IS THE CONTRACTOR'S RESPONSIBILITY TO DESIGN, PROVIDE, AND INSTALL ALL ITEMS REQUIRED AND NECESSARY FOR A COMPLETE AND FUNCTIONING FIRE PROTECTION SYSTEM FOR THE BUILDING(S) BASED ON THE MOST CURRENT CODE REQUIREMENTS. THIS INCLUDES, BUT IS NOT LIMITED TO, THE REQUIREMENT OF A FIRE PUMP AND ALL RELATED ACCESSORIES, DEVICES, AND APPURTENANCES DUE TO INADEQUATE WATER PRESSURE; STORAGE TANKS DUE TO INADEQUATE WATER SUPPLY; INCREASED PIPE SIZES; DRY SPRINKLER SYSTEMS OR INDIVIDUAL DRY SPRINKLERS; ADDITIONAL SPRINKLER HEADS AND PIPING; HOSE RACKS; HOSE VALVES; STANDPIPES; ETC. IT IS THE CONTRACTOR'S RESPONSIBILITY TO DETERMINE THE EXACT REQUIREMENTS NEEDED FOR THIS BUILDING(S) BASED ON THE MOST CURRENT CODE REQUIREMENTS. IF THE CONTRACTOR DETERMINES THAT ADDITIONAL ITEMS NOT SHOWN ON THE DRAWINGS OR SPECIFIED ARE REQUIRED FOR THIS BUILDING(S), IT IS THEIR RESPONSIBILITY TO PROVIDE THOSE ITEMS. CHANGE ORDERS TO THE CONTRACT AFTER THE BID WILL NOT BE ACCEPTED. IF THE CONTRACTOR DETERMINES THAT ADDITIONAL ITEMS NOT SHOWN ON THE DRAWINGS OR SPECIFIED ARE REQUIRED FOR THIS BUILDING(S) AND ADDITIONAL DESIGN DOCUMENTS FROM OTHER TRADES SUCH AS ARCHITECTURAL, STRUCTURAL, MECHANICAL, ELECTRICAL, AND PLUMBING ARE NEEDED, IT IS THE CONTRACTOR'S RESPONSIBILITY TO SUBMIT A REQUEST FOR INFORMATION (RFI) A MINIMUM OF 144 HOURS PRIOR TO BID. IF A FIRE PUMP SYSTEM IS REQUIRED, PROVIDE A SEPERATE ADD ALTERNATE BID. CONTACT THE ARCHITECT A MINIMUM OF 144 HOURS PRIOR TO THE PROJECT BID DATE IF A FIRE PUMP SYSTEM IS REQUIRED.

S&E PROJECT NUMBER	01-615-057
BID PACKAGE / PHASING	BP-1
ISSUED FOR CONSTRUCTION	10/15/2019
REVISIONS	
R #	Doc #
ADD ALTERNATE #1 BOARD OF EDUCATION OFFICE FOR: HEARD COUNTY SCHOOLS 4647 PEA RIDGE ROAD, FRANKLIN, GA 30217 HEARD COUNTY SCHOOL SYSTEM FRANKLIN, GEORGIA	
SPRINKLER FIRE PROTECTION FLOOR PLAN	
DRAWING NUMBER	
F101	