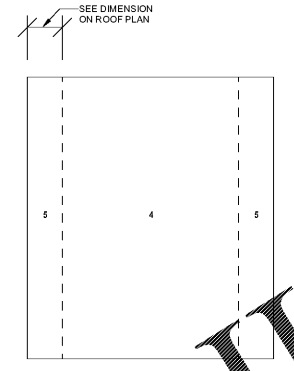
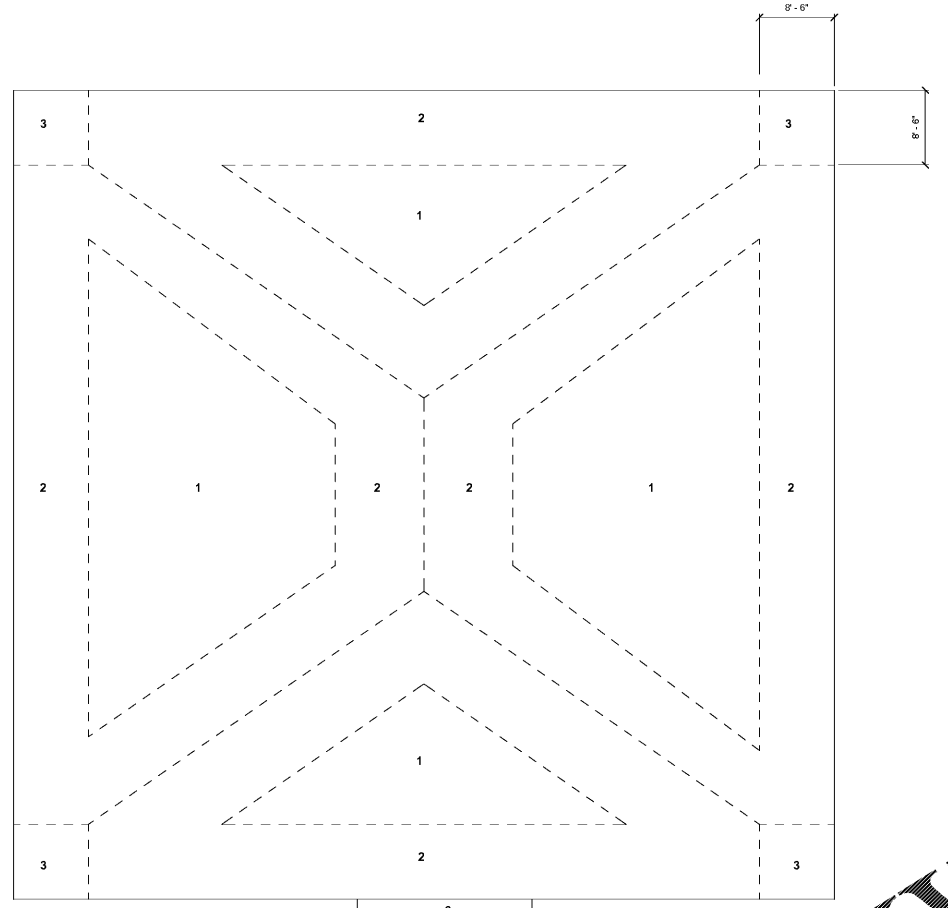


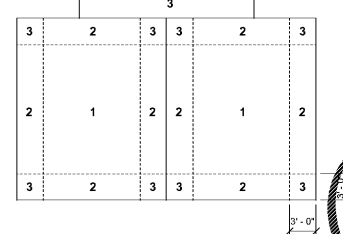
A  
B  
C  
D  
E  
F  
G  
H  
I  
A  
K  
L  
M  
N



**WIND DESIGN PRESSURES FOR COMPONENTS & CLADDING (PSF)**

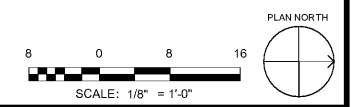
ZONE	Effective Wind Area (ft <sup>2</sup> )			
	10	20	50	100
1	-21	-21	-21	-20
2	-31	-31	-31	-28
OVERHANG	-75	-58	-42	-30
WALL	-25	-25	-24	-22
5	-32	-30	-27	-25

\* Wind loads shown are strength level, multiply by 0.6 to obtain service level loads.



4 WIND PRESSURE PLAN  
1/8" = 1'-0"

Order Plans @ [www.LDILine.com](http://www.LDILine.com)



SA&E PROJECT NUMBER	01-615-057											
BID PACKAGE / PHASING	BP-1											
ISSUED FOR CONSTRUCTION	10/15/2019											
<b>Southern AE</b> 7951 Triton Circle Austell, Ga 30168 (770) 819-7777 architects & engineers	REVISIONS											
	<table border="1"> <thead> <tr> <th>R #</th> <th>Doc #</th> <th>Date</th> </tr> </thead> <tbody> <tr><td> </td><td> </td><td> </td></tr> <tr><td> </td><td> </td><td> </td></tr> <tr><td> </td><td> </td><td> </td></tr> </tbody> </table>	R #	Doc #	Date								
R #	Doc #	Date										
ADD ALTERNATE #1 BOARD OF EDUCATION OFFICE FOR: <b>HEARD COUNTY SCHOOLS</b> 4647 PEA RIDGE ROAD, FRANKLIN, GA 30217 HEARD COUNTY SCHOOL SYSTEM FRANKLIN, GEORGIA												
WIND PRESSURE PLAN												
	DRAWING NUMBER <b>S601</b>											