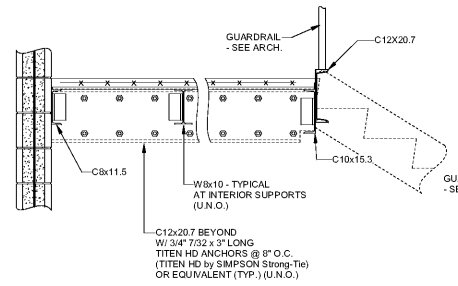
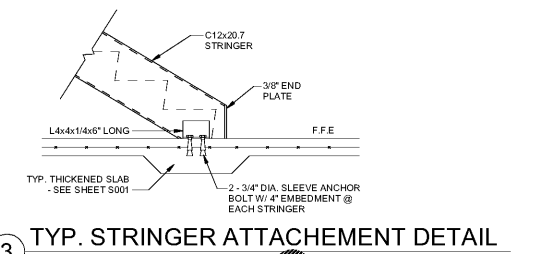


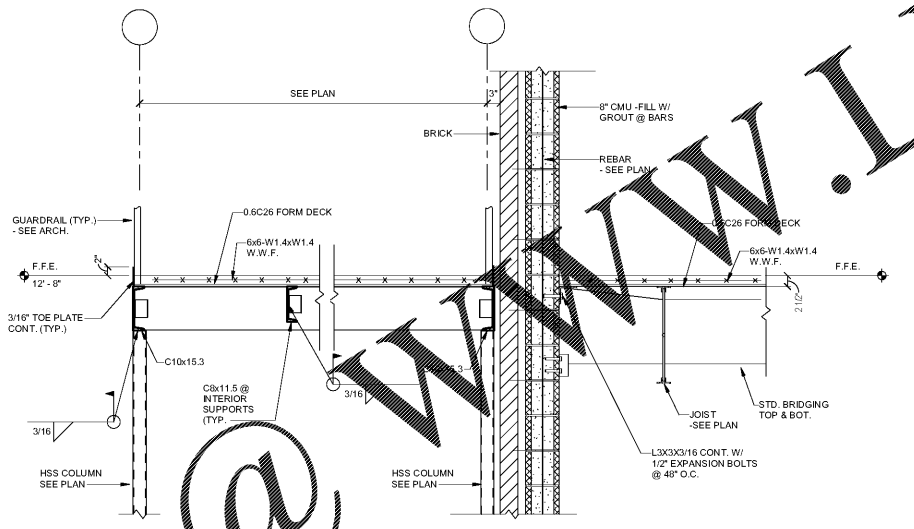
1 ELEVATOR SECTION
3/4" = 1'-0"



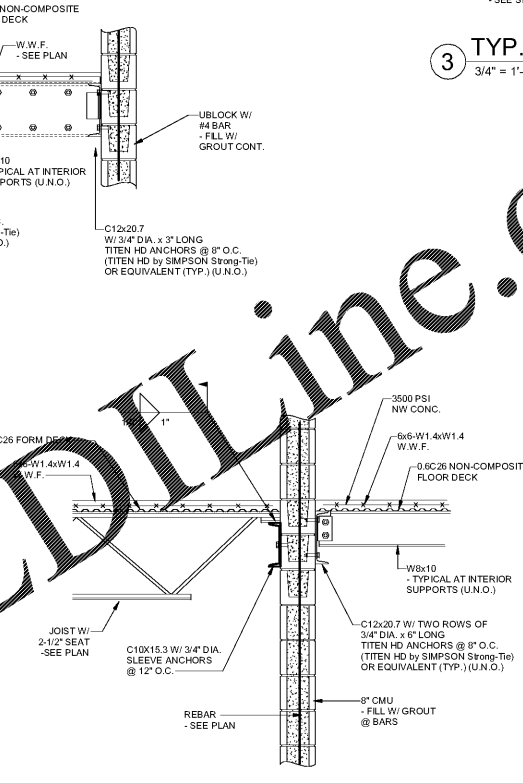
2 STAIR SECTION
3/4" = 1'-0"



3 TYP. STRINGER ATTACHMENT DETAIL
3/4" = 1'-0"

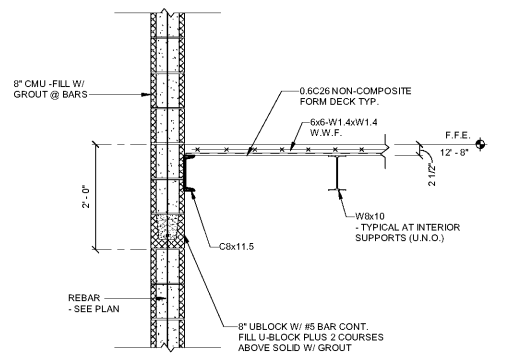


4 EXTERIOR STAIR LANDING DETAIL
3/4" = 1'-0"

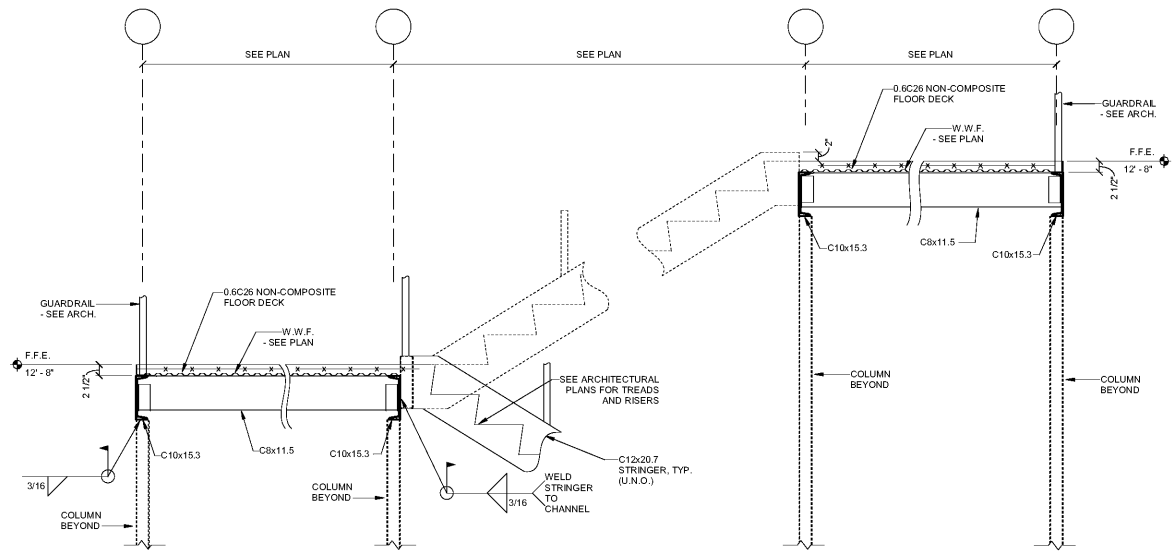


6 STAIR LANDING SECTION 1
3/4" = 1'-0"

5 STAIR LANDING SECTION 2
3/4" = 1'-0"



7 STAIR LANDING SECTION 3
3/4" = 1'-0"



8 STAIR SECTION AT EXTERIOR 1
3/4" = 1'-0"

Order Plans @ WWW.LDILine.com

SA&E PROJECT NUMBER	01-615-057
BID PACKAGE / PHASING	BP-1
ISSUED FOR CONSTRUCTION	10/15/2019
Southern AE 7951 Triton Circle Austell, Ga 30168 (770) 819-7777 architects & engineers	REVISIONS
	R # Doc # Date

ADD ALTERNATE #1
BOARD OF EDUCATION OFFICE FOR:
HEARD COUNTY SCHOOLS
4647 PEA RIDGE ROAD, FRANKLIN, GA 30217
HEARD COUNTY SCHOOL SYSTEM
FRANKLIN, GEORGIA

ELEVATOR & INTERIOR STAIR DETAILS

		DRAWING NUMBER
		S304