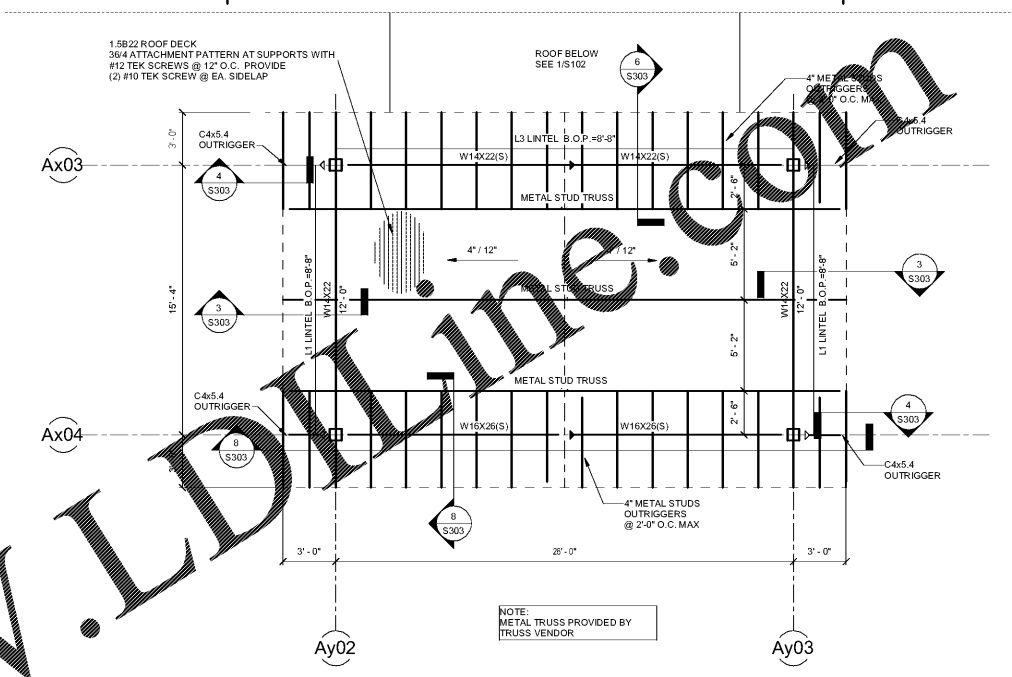


1 ROOF FRAMING PLAN
1/8" = 1'-0"



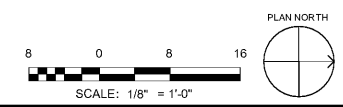
2 LOWER ROOF FRAMING PLAN
1/4" = 1'-0"

ROOF FRAMING NOTES

- SEE THE FOUNDATION PLAN FOR COLUMN SIZES.
- TOP OF STEEL ELEVATION IS MEASURE IN RELATION TO THE BUILDING FINISHED FLOOR ELEVATION 0'-0".
- DESIGN BEAM SHEAR CONNECTIONS FOR (ASD) REACTIONS SHOWN ON THE PLAN, AND PROVIDE THE MINIMUM BOLTED CONNECTION, AS SHOWN ON S002, ON THE "BEAM & COLUMN CONNECTION DETAIL," WHERE NO REACTION IS SHOWN, DESIGN THE CONNECTION FOR NO LESS THAN 10 KIPS.
- SEE SHEET S001 FOR THE FOLLOWING:
 - BEAM & PLATE LINTEL SCHEDULE
 - GENERAL NOTES
 - ROOF OPENING & MECHANICAL SUPPORT DETAILS
 - STANDARD LINTEL SCHEDULE
 - STEEL DECK ATTACHMENT DETAIL
- SEE SHEET S002 FOR THE FOLLOWING:
 - STANDARD BEAM/COLUMN CONNECTIONS
- BEAM SPLICE POINTS NOT DIMENSIONED ON THE PLANS ARE TO BE LOCATED 3'-0" FROM THE COLUMN LINE, TYPICAL.

ROOF FRAMING LEGEND

- ◆ LINTEL MINIMUM BEARING 0'-0" AND FILL CELLS WITH GROUT CONTINUOUS TO FOOTING
- ◆ LINTEL MINIMUM BEARING 1'-4" AND FILL CELLS WITH GROUT CONTINUOUS TO FOOTING
- ⊗ 05 12 00; X-BRIDGING FOR JOISTS (REFER TO DETAILS FOR ANGLE SIZE)
- — — 05 21 00; STANDARD BRIDGING FOR JOISTS
- || BEAM SHEAR SPLICE
- BEAM MOMENT CONNECTION - SEE TYPICAL DETAILS ON S002
- BEAM SLP CONNECTION; REFER TO DETAIL
- (B) BEAM BELOW
- "L-1" BEAM AND PLATE LINTEL; SEE SCHEDULE ON S001
- (S) SLOPING BEAM - TOP OF STEEL SHALL MATCH DECK BEARING, UNLESS DETAILED OTHERWISE
- "SM" SIMILAR DETAIL
- "T" TOP OF STEEL
- "11k" (ASD) BEAM SHEAR REACTION IN KIPS
- (SWB) SHEAR WALL BELOW; REFER TO SHEET S002 FOR TYPICAL DETAIL
- (SP1) SPECIAL JOIST LOAD DIAGRAM - SEE S002
- T BEAM SEAT CONNECTION; REFER TO SHEET S002 FOR TYPICAL DETAIL



Order Plans @ WWW.LDOnline.com

SA&E PROJECT NUMBER	01-615-057
BID PACKAGE / PHASING	BP-1
ISSUED FOR CONSTRUCTION	10/15/2019
REVISIONS	
R #	Doc # Date

ADD ALTERNATE #1
BOARD OF EDUCATION OFFICE FOR:
HEARD COUNTY SCHOOLS
4647 PEA RIDGE ROAD, FRANKLIN, GA 30217
HEARD COUNTY SCHOOL SYSTEM
FRANKLIN, GEORGIA

ROOF FRAMING PLAN

	DRAWING NUMBER S104
--	-------------------------------