

FOUNDATION PLAN NOTES

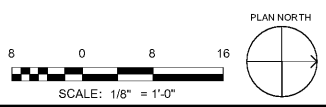
1. TOP OF ALL INTERIOR CMU WALLS AND COLUMN FOOTINGS SHALL BE 8" BELOW FINISHED FLOOR ELEVATION UNLESS NOTED OTHERWISE ON FOUNDATION PLANS.
2. TOP OF ALL EXTERIOR CMU WALLS AND COLUMN FOOTINGS SHALL BE 1'-4" BELOW FINISHED FLOOR ELEVATION UNLESS NOTED OTHERWISE ON FOUNDATION PLANS.
3. THICKENED SLABS ARE REQUIRED UNDER ALL INTERIOR NONLOAD BEARING WALLS AND CHASE WALLS. THICKENED SLABS ARE NOT SHOWN ON THE FOUNDATION PLAN; REFER TO TYPICAL DETAIL ON SHEET S001.
4. COORDINATE WITH PLUMBING DRAWINGS AND LIST FOOTINGS IF REQUIRED TO AVOID INTERFERENCE WITH PLUMBING.
5. ALL REINFORCED MASONRY WALLS MUST BE REINFORCED AS SHOWN IN DETAIL.
6. SEE SHEET S001 FOR THE FOLLOWING:
 - CONTROL JOINT
 - TURN DOWN SLAB
 - WALL CONTROL JOINT
 - DEPRESSION SLAB
 - FOOTING SCHEDULE
 - BASE PLATE SCHEDULE
 - CENTRAL NO. DETAIL
 - THICKENED SLAB

FOUNDATION LEGEND

- STEEL WALL MARKING
- SPOT ELEVATION
- TOP OF FOOTING (TOF) ELEVATION
- FOOTING
- BP-1 BASE PLATE MARK; SEE SCHEDULE ON S001
- F-4 FOOTING MARK; SEE SCHEDULE ON S001
- P-1 CONCRETE PIER MARK; SEE PIER SCHEDULE ON S002
- SW SHEAR WALL
- SLAB CONTROL JOINT ("C.J.")
- SLAB DEPRESSION PATTERN
- SLAB DEPRESSION SYMBOL WITH DEPRESSION DIMENSION
- QUANTITY & SIZE OF VERTICAL BARS REQUIRED ADJACENT TO THE COLUMN OR WALL OPENING.
- TURN DOWN SLAB
- THICKENED SLAB
- WCJ WALL CONTROL JOINT - SEE TYP. DETAIL

Order Plans

1 FOUNDATION PLAN
1/8" = 1'-0"



SA&E PROJECT NUMBER	01-615-057
BID PACKAGE / PHASING	BP-1
ISSUED FOR CONSTRUCTION	10/15/2019
Southern AE 7951 Triton Circle Austell, Ga 30168 (770) 819-7777 architects & engineers	REVISIONS
	R # Doc # Date
<small>© COPYRIGHT 2019 BY SOUTHERN A&E, LLC. ALL RIGHTS RESERVED. THIS DOCUMENT IS THE PROPERTY OF SOUTHERN A&E, LLC AND SHALL NOT BE COPIED OR REPRODUCED IN WHOLE OR IN PART WITHOUT EXPRESS WRITTEN PERMISSION BY SOUTHERN A&E, LLC.</small>	

ADD ALTERNATE #1
BOARD OF EDUCATION OFFICE FOR:
HEARD COUNTY SCHOOLS
4647 PEA RIDGE ROAD, FRANKLIN, GA 30217
HEARD COUNTY SCHOOL SYSTEM
FRANKLIN, GEORGIA

FOUNDATION PLAN

DRAWING NUMBER

S101