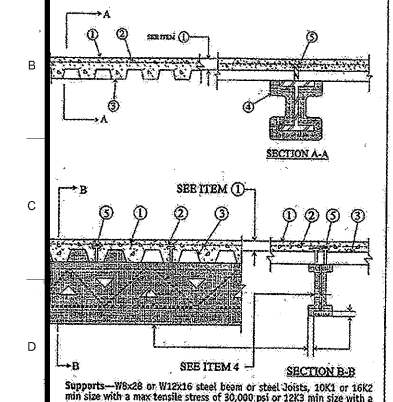


Design No. D925
Restrained Assembly Rating—1, 1-1/2, 2 or 3 Hr
Unrestrained Assembly Rating—0 Hr (See Items 3, 4, 4A and 10)

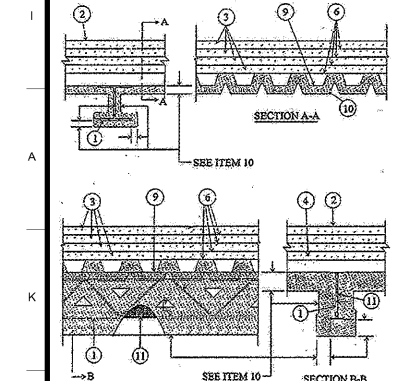


Supports—Welded or bolted to steel beam or steel joists, 10K1 or 10K2 min size with a max tensile stress of 24,000 psi...

Restrained or Unrestrained
Beam Rating: 1, 1-1/2 or 2
Top Chord: S11.5X3.25, S13X3.25
Min Size Section: S11.5X3.25, S13X3.25

FIRE RESISTANCE RATINGS - ANSI/UL263 (BXUV) - Continued

Design No. F732
Restrained Assembly Rating—1, 1-1/2, 2 or 3 Hr
Unrestrained Assembly Rating—0 Hr (See Item 10)



1. Beam—Min W8x10 or Steel Deck—10K1 or 10K2 min size with a max tensile stress of 24,000 psi...

Restrained or Unrestrained
Beam Rating: 1, 1-1/2 or 2
Top Chord: S11.5X3.25, S13X3.25
Min Size Section: S11.5X3.25, S13X3.25

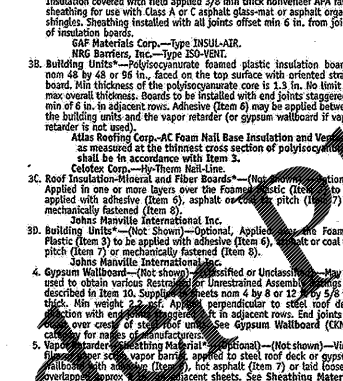
FIRE RESISTANCE RATINGS - ANSI/UL263 (BXUV) - Continued
Method, 8000 psi compressive strength, vibrated, 4 to 7 percent entrained air.

Table with columns: Assembly Rating, Concrete Type, Concrete Weight, Concrete Thickness, Reinforcement.

For use with 2 or 3 in. steel floor and form units only.
2. Welded Wire Fabric—#4 x 6, 10 x 10 SWS.

FIRE RESISTANCE RATINGS - ANSI/UL263 (BXUV) - Continued

Design No. F732
Restrained Assembly Rating—1, 1-1/2, 2 or 3 Hr
Unrestrained Assembly Rating—0 Hr (See Item 10)



1. Beam—Min W8x10 or Steel Deck—10K1 or 10K2 min size with a max tensile stress of 24,000 psi...

Restrained or Unrestrained
Beam Rating: 1, 1-1/2 or 2
Top Chord: S11.5X3.25, S13X3.25
Min Size Section: S11.5X3.25, S13X3.25

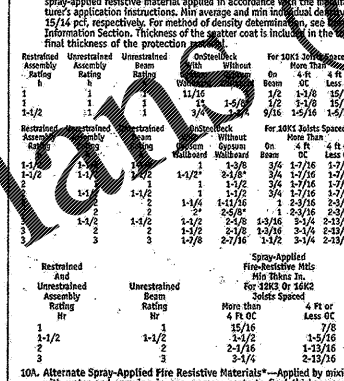
FIRE RESISTANCE RATINGS - ANSI/UL263 (BXUV) - Continued
Method, 8000 psi compressive strength, vibrated, 4 to 7 percent entrained air.

Table with columns: Assembly Rating, Concrete Type, Concrete Weight, Concrete Thickness, Reinforcement.

For use with 2 or 3 in. steel floor and form units only.
2. Welded Wire Fabric—#4 x 6, 10 x 10 SWS.

FIRE RESISTANCE RATINGS - ANSI/UL263 (BXUV) - Continued

Design No. F732
Restrained Assembly Rating—1, 1-1/2, 2 or 3 Hr
Unrestrained Assembly Rating—0 Hr (See Item 10)



1. Beam—Min W8x10 or Steel Deck—10K1 or 10K2 min size with a max tensile stress of 24,000 psi...

Restrained or Unrestrained
Beam Rating: 1, 1-1/2 or 2
Top Chord: S11.5X3.25, S13X3.25
Min Size Section: S11.5X3.25, S13X3.25

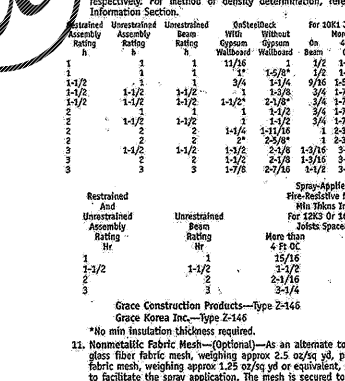
FIRE RESISTANCE RATINGS - ANSI/UL263 (BXUV) - Continued
Method, 8000 psi compressive strength, vibrated, 4 to 7 percent entrained air.

Table with columns: Assembly Rating, Concrete Type, Concrete Weight, Concrete Thickness, Reinforcement.

For use with 2 or 3 in. steel floor and form units only.
2. Welded Wire Fabric—#4 x 6, 10 x 10 SWS.

FIRE RESISTANCE RATINGS - ANSI/UL263 (BXUV) - Continued

Design No. F732
Restrained Assembly Rating—1, 1-1/2, 2 or 3 Hr
Unrestrained Assembly Rating—0 Hr (See Item 10)



1. Beam—Min W8x10 or Steel Deck—10K1 or 10K2 min size with a max tensile stress of 24,000 psi...

Restrained or Unrestrained
Beam Rating: 1, 1-1/2 or 2
Top Chord: S11.5X3.25, S13X3.25
Min Size Section: S11.5X3.25, S13X3.25

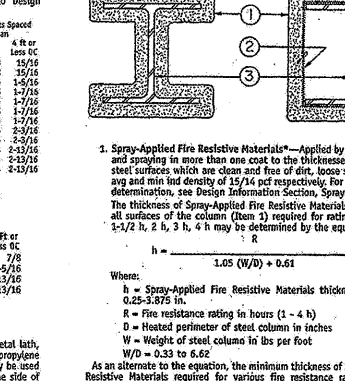
FIRE RESISTANCE RATINGS - ANSI/UL263 (BXUV) - Continued
Method, 8000 psi compressive strength, vibrated, 4 to 7 percent entrained air.

Table with columns: Assembly Rating, Concrete Type, Concrete Weight, Concrete Thickness, Reinforcement.

For use with 2 or 3 in. steel floor and form units only.
2. Welded Wire Fabric—#4 x 6, 10 x 10 SWS.

FIRE RESISTANCE RATINGS - ANSI/UL263 (BXUV) - Continued

Design No. F732
Restrained Assembly Rating—1, 1-1/2, 2 or 3 Hr
Unrestrained Assembly Rating—0 Hr (See Item 10)



1. Beam—Min W8x10 or Steel Deck—10K1 or 10K2 min size with a max tensile stress of 24,000 psi...

Restrained or Unrestrained
Beam Rating: 1, 1-1/2 or 2
Top Chord: S11.5X3.25, S13X3.25
Min Size Section: S11.5X3.25, S13X3.25

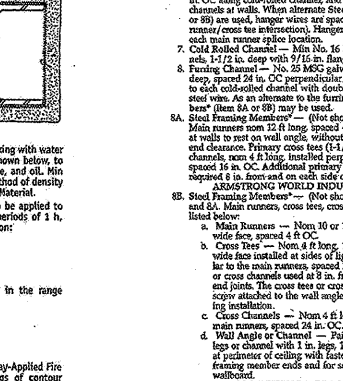
FIRE RESISTANCE RATINGS - ANSI/UL263 (BXUV) - Continued
Method, 8000 psi compressive strength, vibrated, 4 to 7 percent entrained air.

Table with columns: Assembly Rating, Concrete Type, Concrete Weight, Concrete Thickness, Reinforcement.

For use with 2 or 3 in. steel floor and form units only.
2. Welded Wire Fabric—#4 x 6, 10 x 10 SWS.

FIRE RESISTANCE RATINGS - ANSI/UL263 (BXUV) - Continued

Design No. F732
Restrained Assembly Rating—1, 1-1/2, 2 or 3 Hr
Unrestrained Assembly Rating—0 Hr (See Item 10)



1. Beam—Min W8x10 or Steel Deck—10K1 or 10K2 min size with a max tensile stress of 24,000 psi...

Restrained or Unrestrained
Beam Rating: 1, 1-1/2 or 2
Top Chord: S11.5X3.25, S13X3.25
Min Size Section: S11.5X3.25, S13X3.25

FIRE RESISTANCE RATINGS - ANSI/UL263 (BXUV) - Continued
Method, 8000 psi compressive strength, vibrated, 4 to 7 percent entrained air.

Table with columns: Assembly Rating, Concrete Type, Concrete Weight, Concrete Thickness, Reinforcement.

For use with 2 or 3 in. steel floor and form units only.
2. Welded Wire Fabric—#4 x 6, 10 x 10 SWS.

FIRE RESISTANCE RATINGS - ANSI/UL263 (BXUV) - Continued

Design No. F732
Restrained Assembly Rating—1, 1-1/2, 2 or 3 Hr
Unrestrained Assembly Rating—0 Hr (See Item 10)



1. Beam—Min W8x10 or Steel Deck—10K1 or 10K2 min size with a max tensile stress of 24,000 psi...

Restrained or Unrestrained
Beam Rating: 1, 1-1/2 or 2
Top Chord: S11.5X3.25, S13X3.25
Min Size Section: S11.5X3.25, S13X3.25

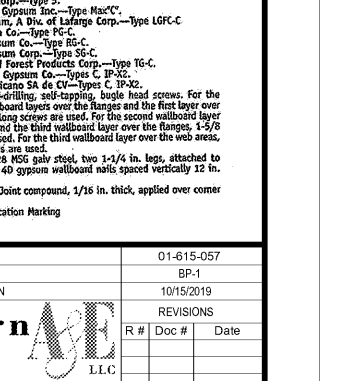
FIRE RESISTANCE RATINGS - ANSI/UL263 (BXUV) - Continued
Method, 8000 psi compressive strength, vibrated, 4 to 7 percent entrained air.

Table with columns: Assembly Rating, Concrete Type, Concrete Weight, Concrete Thickness, Reinforcement.

For use with 2 or 3 in. steel floor and form units only.
2. Welded Wire Fabric—#4 x 6, 10 x 10 SWS.

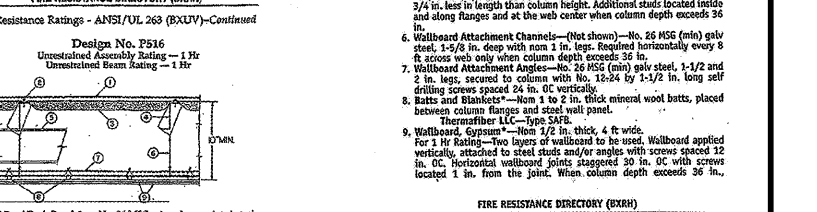
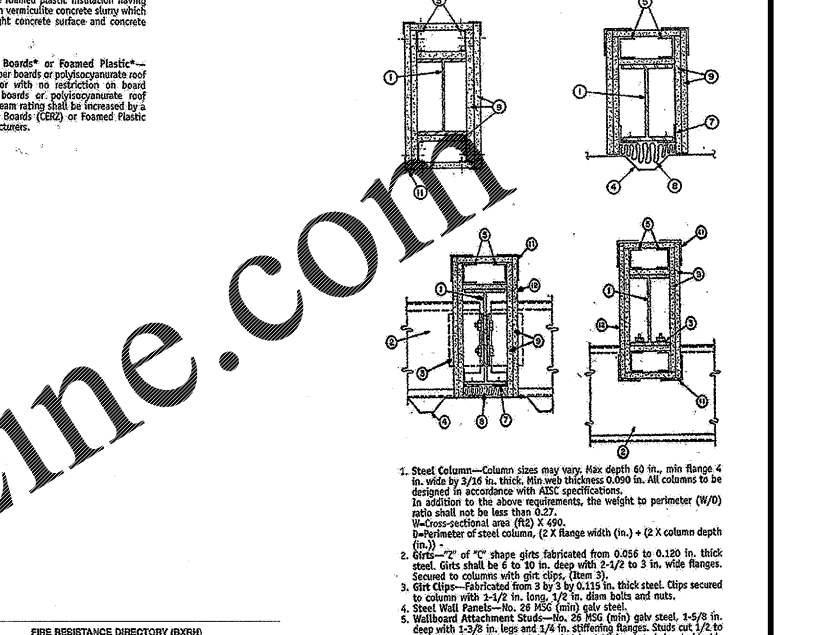
FIRE RESISTANCE RATINGS - ANSI/UL263 (BXUV) - Continued

Design No. F732
Restrained Assembly Rating—1, 1-1/2, 2 or 3 Hr
Unrestrained Assembly Rating—0 Hr (See Item 10)



1. Beam—Min W8x10 or Steel Deck—10K1 or 10K2 min size with a max tensile stress of 24,000 psi...

Restrained or Unrestrained
Beam Rating: 1, 1-1/2 or 2
Top Chord: S11.5X3.25, S13X3.25
Min Size Section: S11.5X3.25, S13X3.25



1. Steel Column—Column sizes may vary. Max depth 60 in. All columns to be designed in accordance with AISC specifications.

2. Girts—"Z" of C shape girts fabricated from 0.556 to 0.120 in. thick steel. Girts shall be 6 to 10 in. deep with 2-1/2 to 3 in. wide flanges.

3. Girt Clips—Fabricated from 3 in. deep x 1/2 in. thick steel. Clips secured to column with 2-1/2 in. dia. bolts and nuts.

4. Wall Attachment Channels—(Not shown)—26 MSK (min) galv steel, 1-1/2 in. deep with 1-3/8 in. legs and 1/4 in. stiffeners.

5. Wallboard Attachment Studs—26 MSK (min) galv steel, 1-1/2 in. deep with 1-3/8 in. legs and 1/4 in. stiffeners.

6. Wallboard Attachment Channels—(Not shown)—26 MSK (min) galv steel, 1-1/2 in. deep with 1-3/8 in. legs and 1/4 in. stiffeners.

SA&E PROJECT NUMBER: 01-615-057
BID PACKAGE / PHASING: BP-1
ISSUED FOR CONSTRUCTION: 10/15/2019
Southern Architects & Engineers L.L.C.
7951 Triton Circle, Suite 301
(770) 819-7777
ADD ALTERNATE #1 BOARD OF EDUCATION OFFICE FOR: HEARD COUNTY SCHOOLS
4647 PEA RIDGE ROAD, FRANKLIN, GA 30217
HEARD COUNTY SCHOOL SYSTEM
FRANKLIN, GEORGIA
UL2
DRAWING NUMBER: A703