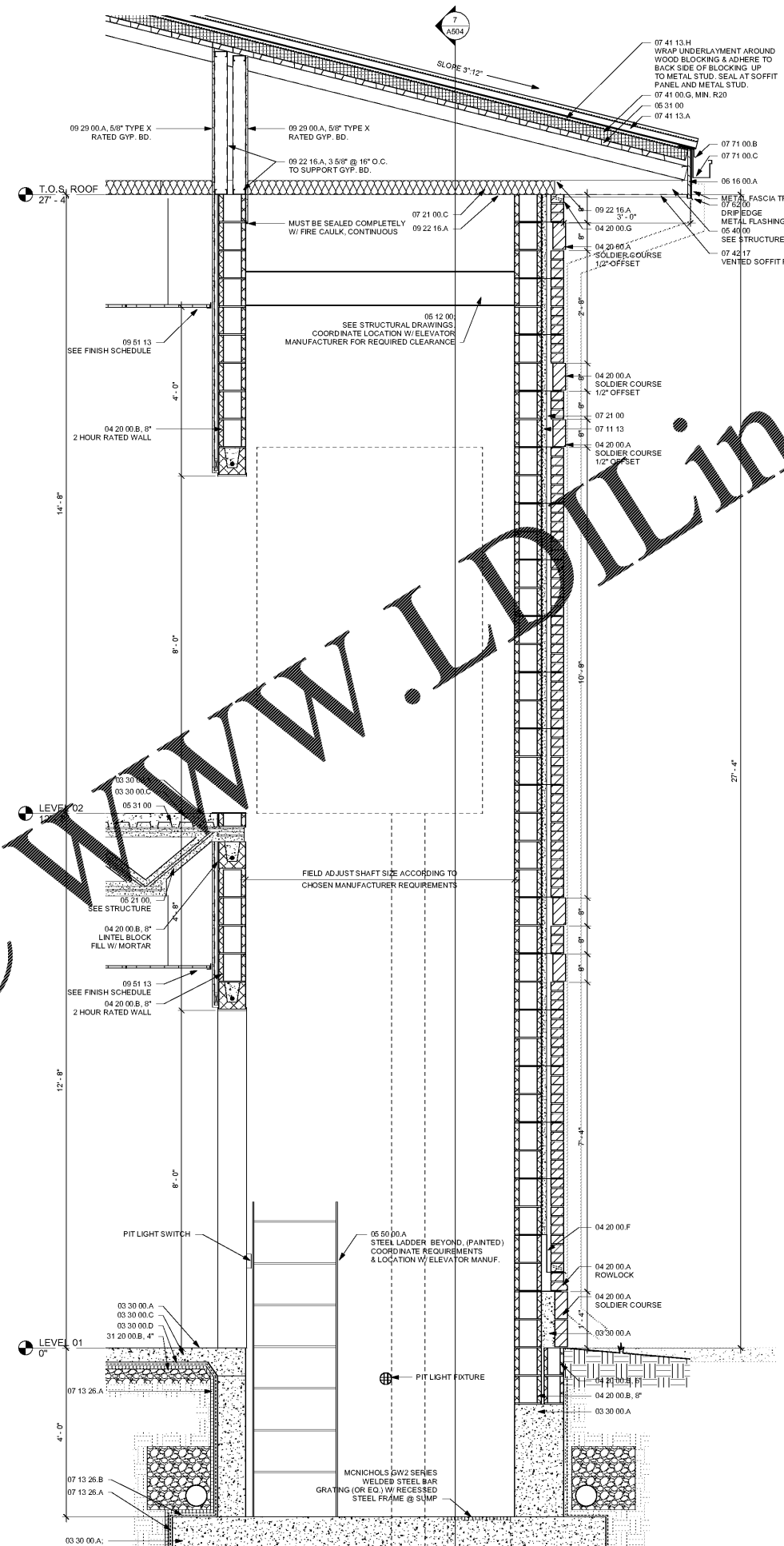


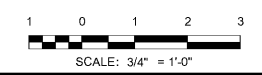
1 STAIR SECTION 02
3/4" = 1'-0"



2 ELEVATOR SECTION 02
3/4" = 1'-0"

WWW.LDILine.com

Order Plans @



SA&E PROJECT NUMBER	01-615-057
BID PACKAGE / PHASING	BP-1
ISSUED FOR CONSTRUCTION	10/15/2019
Southern AE 7951 Truon Circle Austell, Ga 30168 (770) 819-7777 architects & engineers	REVISIONS
	R # Doc # Date

ADD ALTERNATE #1
BOARD OF EDUCATION OFFICE FOR:
HEARD COUNTY SCHOOLS
4647 PEA RIDGE ROAD, FRANKLIN, GA 30217
HEARD COUNTY SCHOOL SYSTEM
FRANKLIN, GEORGIA

STAIR & ELEVATOR DETAILS



DRAWING NUMBER
A505