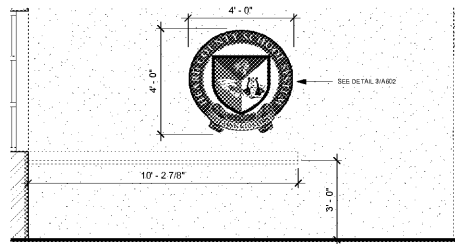
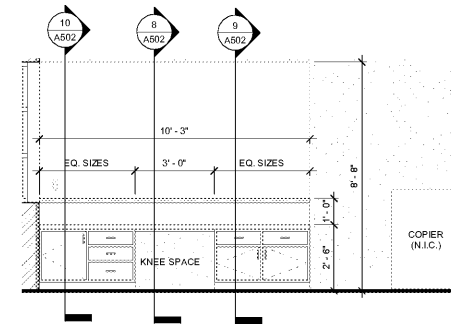


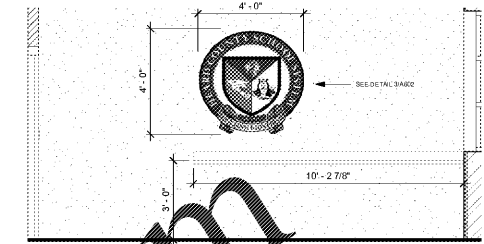
1 INTERIOR ELEVATION - MILLWORK - TAMMY 119 (01)
3/8" = 1'-0"



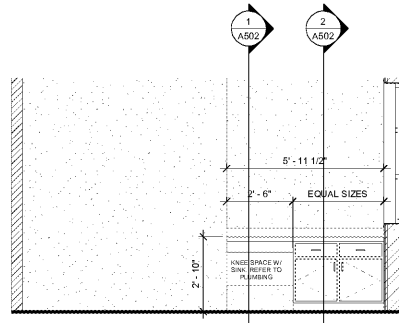
2 INTERIOR ELEVATION - MILLWORK - TAMMY 119 (02)
3/8" = 1'-0"



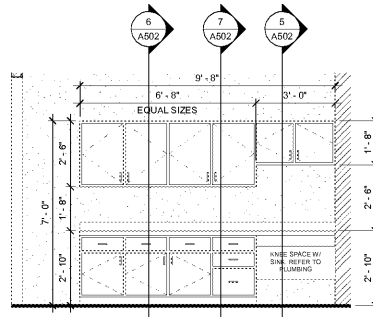
3 INTERIOR ELEVATION - MILLWORK - JENNIFER 117 (01)
3/8" = 1'-0"



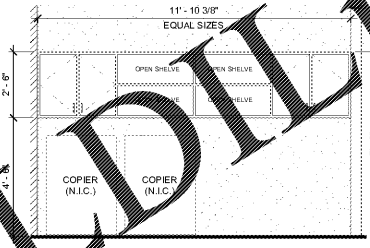
4 INTERIOR ELEVATION - MILLWORK - JENNIFER 117 (02)
3/8" = 1'-0"



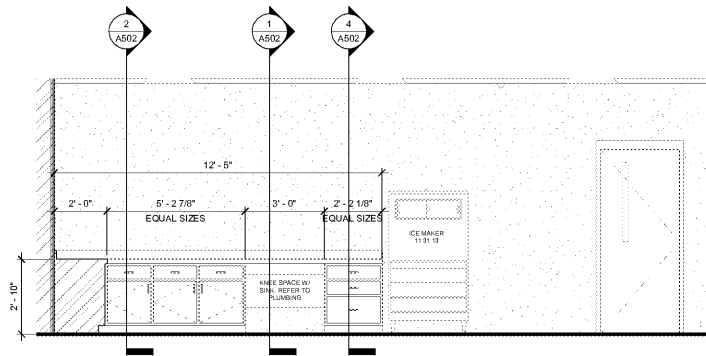
5 INTERIOR ELEVATION - MILLWORK - CONFERENCE 104
3/8" = 1'-0"



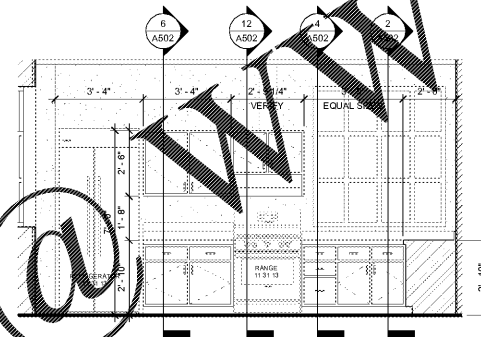
6 INTERIOR ELEVATION - MILLWORK - COPY COFFEE 127 (01)
3/8" = 1'-0"



7 INTERIOR ELEVATION - MILLWORK - COPY COFFEE 127 (02)
3/8" = 1'-0"



8 INTERIOR ELEVATION - MILLWORK - KITCHEN 202 (01)
3/8" = 1'-0"



9 INTERIOR ELEVATION - MILLWORK - KITCHEN 202 (02)
3/8" = 1'-0"

Order Plans @

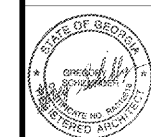
WWW.LDILine.com



SA&E PROJECT NUMBER	01-615-057
BID PACKAGE / PHASING	BP-1
ISSUED FOR CONSTRUCTION	10/15/2019
Southern AE 7951 Truon Circle Austell, Ga 30168 (770) 819-7777 architects & engineers	REVISIONS
	R# Doc# Date
<small>© COPYRIGHT 2019 BY SOUTHERN AE, LLC. ALL RIGHTS RESERVED. THIS DOCUMENT IS THE PROPERTY OF SOUTHERN AE, LLC AND SHALL NOT BE COPIED OR REPRODUCED IN WHOLE OR IN PART WITHOUT EXPRESS WRITTEN PERMISSION FROM SOUTHERN AE, LLC.</small>	

ADD ALTERNATE #1
 BOARD OF EDUCATION OFFICE FOR:
HEARD COUNTY SCHOOLS
 4647 PEA RIDGE ROAD, FRANKLIN, GA 30217
 HEARD COUNTY SCHOOL SYSTEM
 FRANKLIN, GEORGIA

MILLWORK DETAILS



DRAWING NUMBER

A501