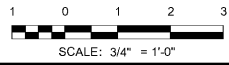


1 WALL SECTION - VESTIBULE 121  
3/4" = 1'-0"

2 BUILDING SECTION WEST/EAST - Callout 1  
3/4" = 1'-0"



SA&E PROJECT NUMBER	01-615-057
BID PACKAGE / PHASING	BP-1
ISSUED FOR CONSTRUCTION	10/15/2019
<b>Southern AE</b> 7951 Tricon Circle Austell, Ga 30168 (770) 519-7777 architects & engineers	REVISIONS
	R # Doc # Date

ADD ALTERNATE #1  
 BOARD OF EDUCATION OFFICE FOR:  
**HEARD COUNTY SCHOOLS**  
 4647 PEA RIDGE ROAD, FRANKLIN, GA 30217  
 HEARD COUNTY SCHOOL SYSTEM  
 FRANKLIN, GEORGIA

WALL SECTIONS	
DRAWING NUMBER	A303



Order Plans @ [www.LDILine.com](http://www.LDILine.com)