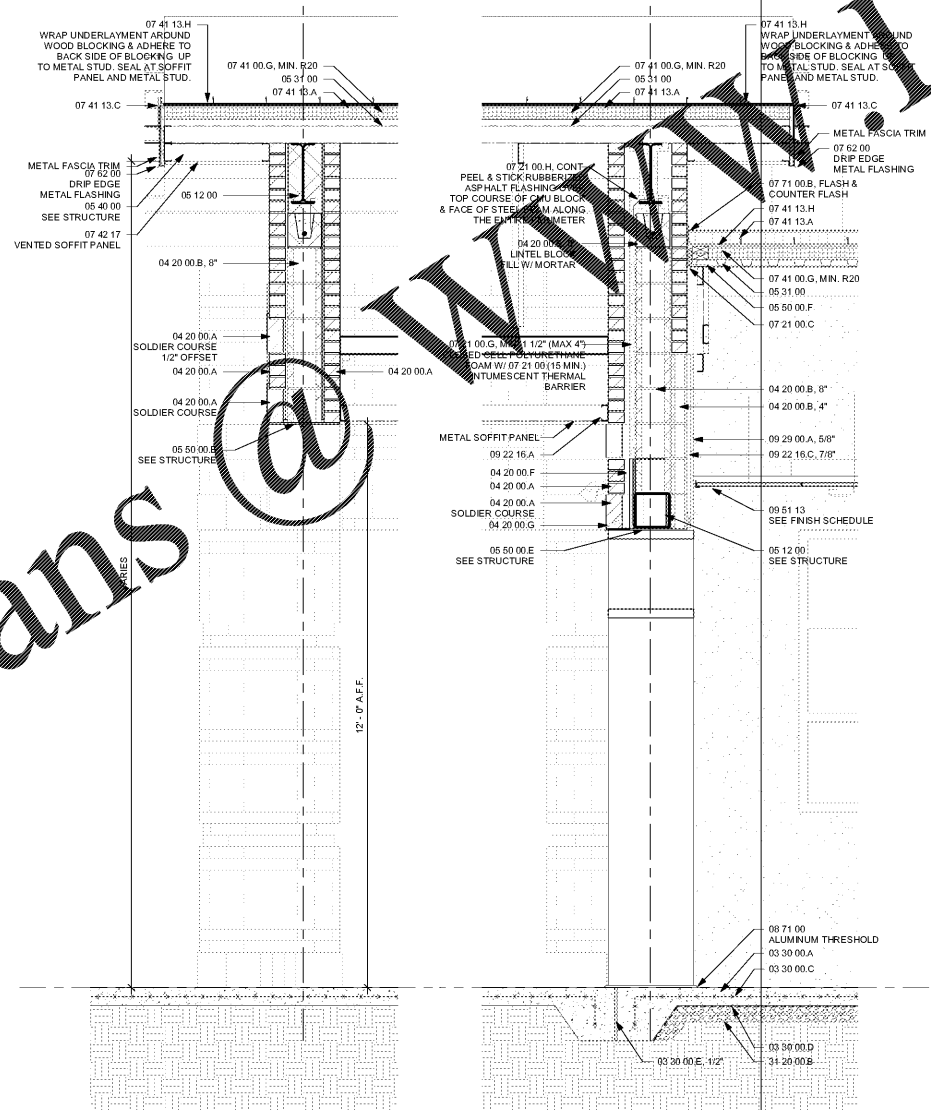
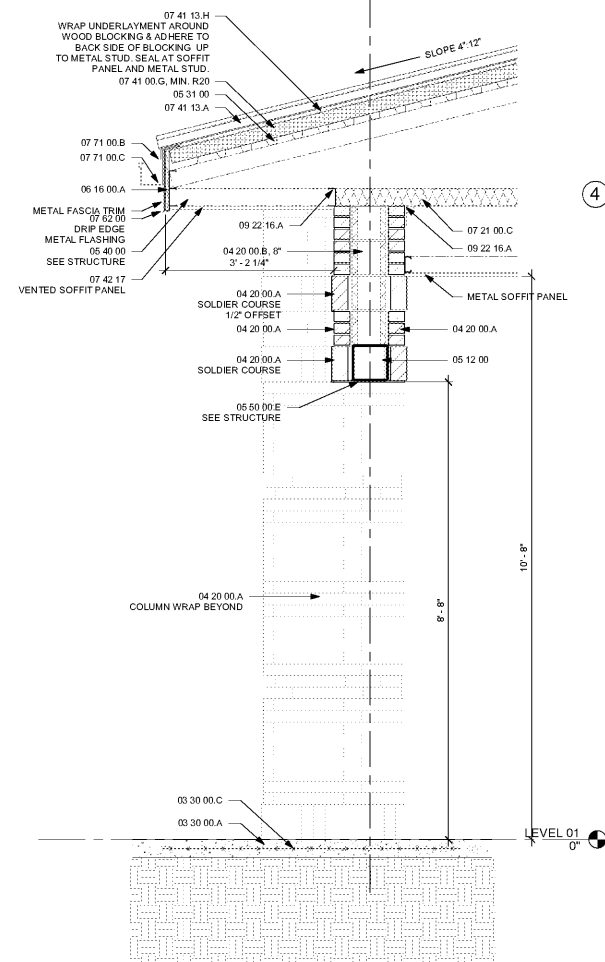


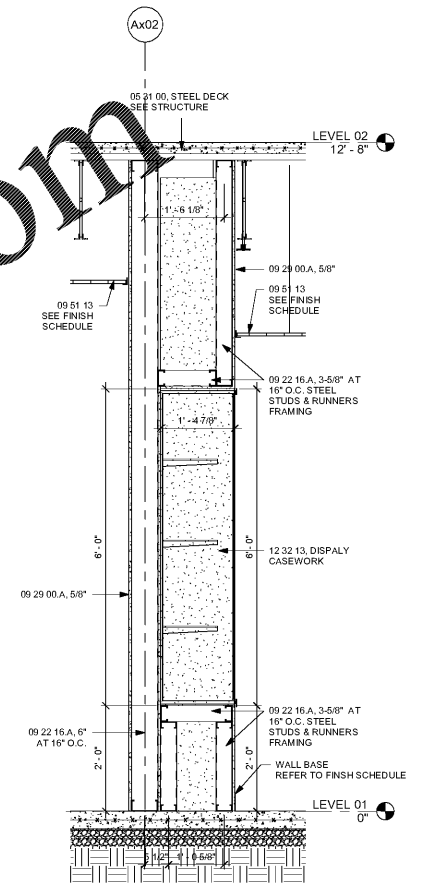
1 TYPICAL SECTION @ EAVE 3/12 SLOPE
3/4" = 1'-0"



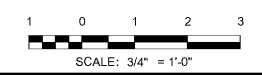
2 WALL SECTION - ENTRANCE PORTICO & VESTIBULE 121
3/4" = 1'-0"



3 WALL SECTION - ENTRANCE PORTICO @ EAVE
3/4" = 1'-0"



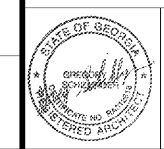
4 WALL SECTION - DISPLAY CASE
3/4" = 1'-0"



S&E PROJECT NUMBER	01-615-057
BID PACKAGE / PHASING	BP-1
ISSUED FOR CONSTRUCTION	10/15/2019
Southern AE 7951 Tricon Circle Austell, Ga 30168 (770) 519-7777 architects & engineers	REVISIONS
	R # Doc # Date
<small>© COPYRIGHT 2019 BY SOUTHERN AE, LLC. ALL RIGHTS RESERVED. THIS DOCUMENT IS THE PROPERTY OF SOUTHERN AE, LLC AND SHALL NOT BE COPIED OR REPRODUCED IN WHOLE OR IN PART WITHOUT EXPRESS WRITTEN CONSENT FROM SOUTHERN AE, LLC.</small>	

ADD ALTERNATE #1
BOARD OF EDUCATION OFFICE FOR:
HEARD COUNTY SCHOOLS
4647 PEA RIDGE ROAD, FRANKLIN, GA 30217
HEARD COUNTY SCHOOL SYSTEM
FRANKLIN, GEORGIA

WALL SECTIONS



DRAWING NUMBER

A302