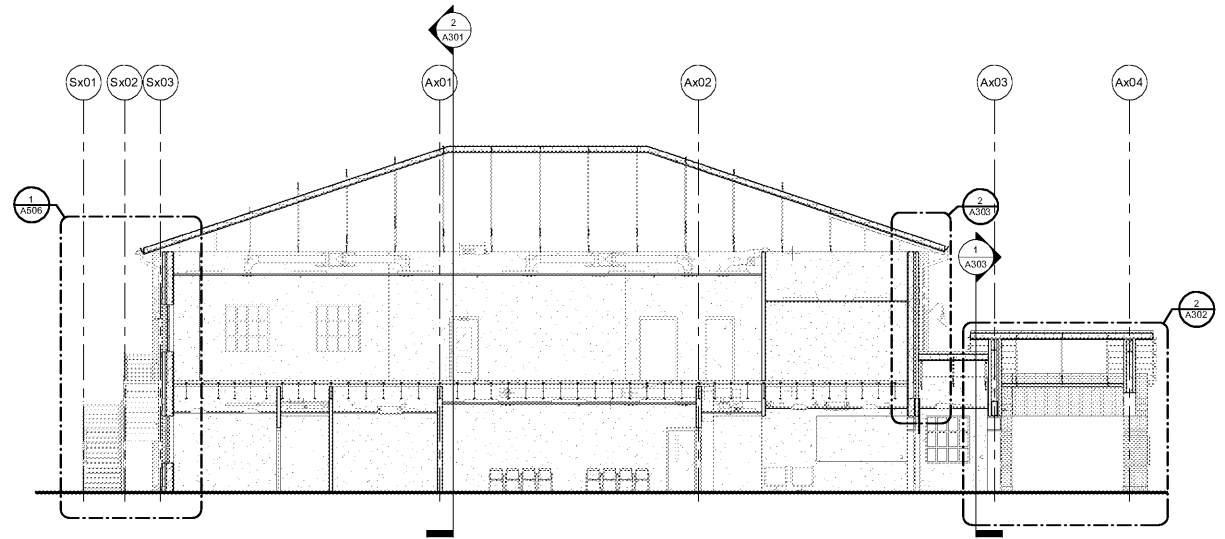
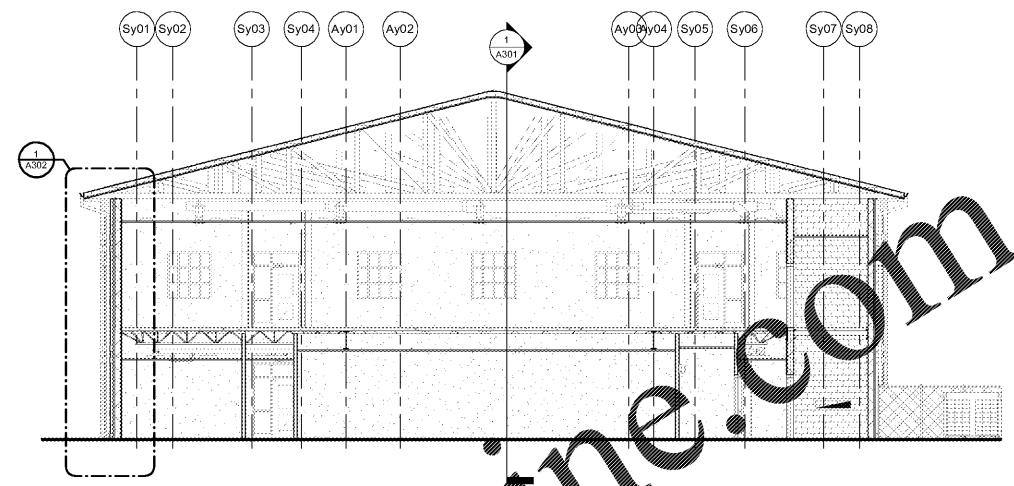


A  
B  
C  
D  
E  
F  
G  
H  
I  
A  
K  
L  
M  
N

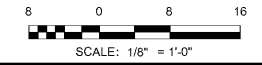



① BUILDING SECTION WEST/EAST  
1/8" = 1'-0"



② BUILDING SECTION SOUTH/NORTH  
1/8" = 1'-0"

Order Plans @ www.LDILine.com



S&E PROJECT NUMBER		01-615-057	
BID PACKAGE / PHASING		BP-1	
ISSUED FOR CONSTRUCTION		10/15/2019	
<b>Southern AE</b> 7951 Tricon Circle Austell, Ga 30168 (770) 819-7777 architects & engineers		REVISIONS	
		R #	Doc #
<small>© COPYRIGHT 2019 BY SOUTHERN A/E, LLC. ALL RIGHTS RESERVED.          THIS DOCUMENT IS THE PROPERTY OF SOUTHERN A/E, LLC AND SHALL NOT BE COPIED OR REPRODUCED IN WHOLE OR IN PART WITHOUT EXPRESS WRITTEN CONSENT FROM SOUTHERN A/E, LLC.</small>			
ADD ALTERNATE #1 BOARD OF EDUCATION OFFICE FOR: <b>HEARD COUNTY SCHOOLS</b> 4647 PEA RIDGE ROAD, FRANKLIN, GA 30217 HEARD COUNTY SCHOOL SYSTEM FRANKLIN, GEORGIA			
BUILDING SECTIONS			
		DRAWING NUMBER	
		A301	