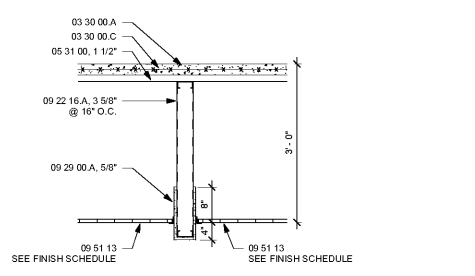


NOTES & LEGEND TO RCP

- 1 Provide roller window shades (See Specification 12 24 13) in Multi-Purpose Room 201
- 2 Walls to be sound proofed by filling with 4" Batt Insulation.

LEGEND TO REFLECTED CEILING PLAN

- Acoustical Panel Ceilings
- 2' X 4' Recessed Fluorescent Fixture
- 2' X 4' Recessed Fluorescent Emergency Fixture
- Surface Mounted Fluorescent Fixture
- 2' Recessed Fluorescent Fixture
- Fluorescent Strip Fixture
- Standard White H-Bay Fixture
- Emergency Light Fixture
- Exit Light Fixture
- 2' x 2' HVAC Return Air Grille
- 2' x 2' HVAC Supply Diffuser
- Ceiling Unit Heater
- HVAC Exhaust Fan
- Ceiling Speaker Unit
- Public Address System
- 2' x 2' Painted Acoustical Panels
Color selected by Architect
- 2' x 2' Translucent Diffusers, Paint Ceiling
Grid Black, Paint Ceiling Type 1 above white.
- 2' x 2' Metal Ceiling Lay-in Panels
- 2' x 2' Acoustical Ceiling Tile
Armstrong Cirrus Thru's "Things that Fly"



3 TYPICAL CEILING FURRING DETAIL
3/4" = 1'-0"

1 LEVEL 01 - REFLECTED CEILING PLAN
1/8" = 1'-0"

2 LEVEL 02 - REFLECTED CEILING PLAN
1/8" = 1'-0"

LEGEND TO WALLS:

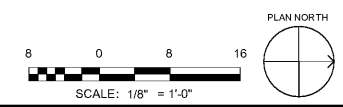
- LEGEND TO WALLS PROVIDES INFORMATION ON EXTERIOR WALLS AND WALL RATINGS. REFER ALSO TO FOUNDATIONS, BUILDING SECTIONS, WALL SECTIONS AND WALL DETAILS FOR ADDITIONAL INFORMATION. REFER TO ELEVATIONS, BUILDING SECTIONS, WALL SECTIONS AND WALL DETAILS FOR INFORMATION ON EXTERIOR WALLS.
- REFER TO DRAWING A701 FOR FIRESTOP WALL DETAILS.
- REFER TO DRAWING A702 & A703 FOR TYPICAL U.L. DESIGN DETAILS.
- CONTRACTOR SHALL CONSTRUCT ALL WALLS AS INDICATED ON DRAWINGS. CHANGES TO THIS DESIGN IS NOT ALLOWED WITHOUT APPROVAL OF ARCHITECT.
- PROVIDE SPRAY ON INSULATION ON ALL STRUCTURE IN RATED ROOMS.

- ENVIRONMENTAL WALLS
- SMOKE RATED WALLS
- ONE HOUR RATED WALLS
- TWO HOUR RATED WALLS

- 0-NRP-G4 "NON-RATED PARTITION - GWB"
NON-RATED DRYWALL (ONE LAYER OF REGULAR 1/2" GYPSUM WALL BOARD ON EACH SIDE OF 3 5/8" METAL STUDS @ 16" O.C.) UP TO MIN. 8" ABOVE CEILING UNLESS NOTED OTHERWISE ON DRAWINGS. SEE SPECIFICATIONS FOR METAL STUD REQUIREMENTS.
- 0-NRP-G6 "NON-RATED PARTITION - GWB"
NON-RATED DRYWALL (ONE LAYER OF REGULAR 1/2" GYPSUM WALL BOARD ON EACH SIDE OF 6" METAL STUDS @ 16" O.C.) UP TO MIN. 8" ABOVE CEILING UNLESS NOTED OTHERWISE ON DRAWINGS. SEE SPECIFICATIONS FOR METAL STUD REQUIREMENTS.
- 0-SRP-G4 "SMOKE RESISTIVE PARTITION - GWB"
NON-RATED DRYWALL (ONE LAYER OF REGULAR 1/2" GYPSUM WALL BOARD ON ONE SIDE OF 3 5/8" METAL STUDS @ 16" O.C.) UP TO FLOOR OR ROOF DECK. SEE SPECIFICATIONS FOR METAL STUDS REQUIREMENTS. SEAL WALL AT UNDERSIDE OF DECK.
- 0-SRP-G6 "SMOKE RESISTIVE PARTITION - GWB"
NON-RATED DRYWALL (ONE LAYER OF REGULAR 1/2" GYPSUM WALL BOARD ON ONE SIDE OF 6" METAL STUDS @ 16" O.C.) UP TO FLOOR OR ROOF DECK. SEE SPECIFICATIONS FOR METAL STUDS REQUIREMENTS. SEAL WALL AT UNDERSIDE OF DECK.

- 1-SRB-G4 "1 HOUR - SMOKE-RATED BARRIER - GWB"
1 HOUR FIRE-RATED DRYWALL (ONE LAYER OF FIRE-RATED 5/8" GYPSUM WALL BOARD ON EACH SIDE OF 3 5/8" METAL STUDS @ 16" O.C.) UP TO FLOOR OR ROOF DECK. SEE SPECIFICATIONS FOR METAL STUDS REQUIREMENTS. FIRESTOP WALL AT UNDERSIDE OF DECK. U.L. NO. U419 AND U906.
- 1-SRB-G6 "1 HOUR - SMOKE-RATED BARRIER - GWB"
1 HOUR FIRE-RATED DRYWALL (ONE LAYER OF FIRE-RATED 5/8" GYPSUM WALL BOARD ON EACH SIDE OF 6" METAL STUDS @ 16" O.C.) UP TO FLOOR OR ROOF DECK. SEE SPECIFICATIONS FOR METAL STUDS REQUIREMENTS. FIRESTOP WALL AT UNDERSIDE OF DECK. U.L. NO. U419 AND U906.
- 1-SRB-BG "1 HOUR - SMOKE-RATED BARRIER - CMU + GWB"
1 HOUR FIRE-RATED CONCRETE BLOCK WALL UP TO FIRST COURSE (MIN. 4") ABOVE CEILING. EXTEND WALL UP TO FLOOR OR ROOF DECK WITH 1 HOUR FIRE-RATED DRYWALL PARTITION (ONE LAYER OF FIRE-RATED 5/8" GYPSUM WALL BOARD ON EACH SIDE OF 3 5/8" METAL STUDS @ 16" O.C.). FIRESTOP WALL AT UNDERSIDE OF DECK. U.L. DESIGN NO. U419 AND U906.

- 1-FRB-BG "1 HOUR - FIRE-RATED BARRIER - CMU + GWB"
1 HOUR FIRE-RATED CONCRETE BLOCK WALL UP TO FIRST COURSE (MIN. 4") ABOVE CEILING. BLOCK THICKNESS AS INDICATED ON DRAWINGS. EXTEND WALL UP TO FLOOR OR ROOF DECK WITH 1 HOUR FIRE-RATED DRYWALL PARTITION (ONE LAYER OF FIRE-RATED 5/8" GYPSUM WALL BOARD ON EACH SIDE OF 3 5/8" METAL STUDS @ 16" O.C.). SEE SPECIFICATIONS FOR METAL STUDS REQUIREMENTS. FIRESTOP WALL AT UNDERSIDE OF DECK. U.L. DESIGN NO. U419 AND U906.
- 1-FRB-B "1 HOUR - FIRE-RATED BARRIER - CMU"
1 HOUR FIRE-RATED CONCRETE BLOCK WALL UP TO FLOOR OR ROOF DECK. BLOCK THICKNESS AS INDICATED ON DRAWINGS. FIRESTOP WALL AT UNDERSIDE OF DECK. U.L. DESIGN NO. U419 AND U906.
- 2-FRB-BG "2 HOUR - FIRE-RATED BARRIER - CMU + GWB"
2 HOUR FIRE-RATED CONCRETE BLOCK WALL UP TO FIRST COURSE (MIN. 4") ABOVE CEILING. BLOCK THICKNESS AS INDICATED ON DRAWINGS. EXTEND WALL UP TO FLOOR OR ROOF DECK WITH 2 HOUR FIRE-RATED DRYWALL PARTITION (TWO LAYERS OF FIRE-RATED 5/8" GYPSUM WALL BOARD ON EACH SIDE OF 3 5/8" METAL STUDS @ 16" O.C.). SEE SPECIFICATIONS FOR METAL STUDS REQUIREMENTS. FIRESTOP WALL AT UNDERSIDE OF DECK. U.L. DESIGN NO. U419 AND U906.
- 2-FRB-B "2 HOUR - FIRE-RATED BARRIER - CMU"
2 HOUR FIRE-RATED CONCRETE BLOCK WALL UP TO FLOOR OR ROOF DECK. BLOCK THICKNESS AS INDICATED ON DRAWINGS. FIRESTOP WALL AT UNDERSIDE OF DECK. U.L. DESIGN NO. U419 AND U906.



SA&E PROJECT NUMBER	01-615-057
BID PACKAGE / PHASING	BP-1
ISSUED FOR CONSTRUCTION	10/15/2019
REVISIONS	
R #	Doc #
1	AD1
Date	11.4.2019

ADD ALTERNATE #1
BOARD OF EDUCATION OFFICE FOR:
HEARD COUNTY SCHOOLS
4647 PEA RIDGE ROAD, FRANKLIN, GA 30217
HEARD COUNTY SCHOOL SYSTEM
FRANKLIN, GEORGIA

REFLECTED CEILING PLANS

DRAWING NUMBER
A102