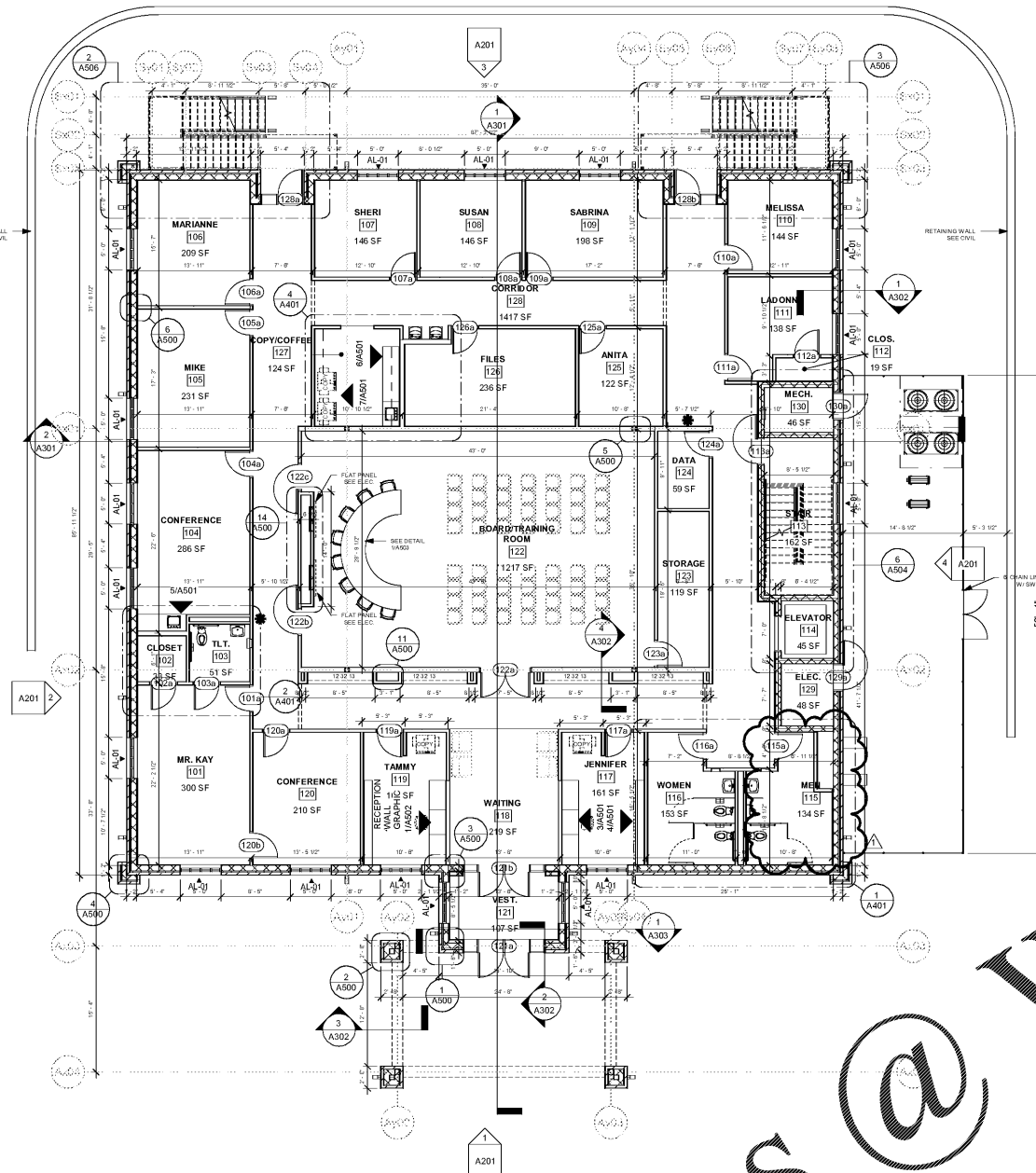


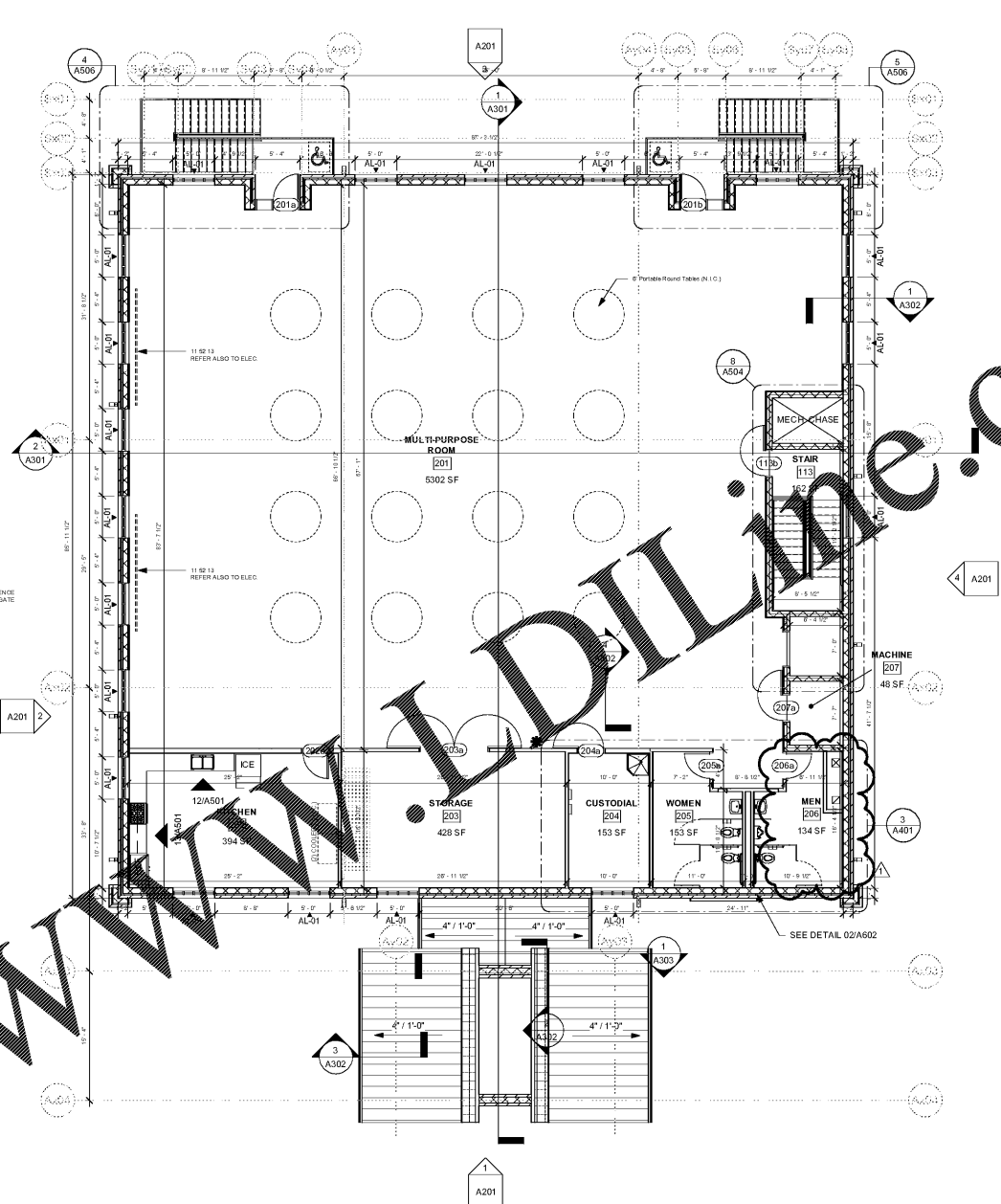
NOTES & LEGEND TO FLOOR PLANS

- 1 Refer to Cover Sheet for Keynote List.
- 2 Refer to Reflected Ceiling Plan and/or Life Safety Plan for wall ratings and additional information on walls.
- 3 Refer to Drawing A401 for Enlarged Plans of all Toilets and additional dimensions of these areas.
- 4 Refer to Mechanical Drawings for location and opening requirements for all Thru-wall and Wall-Hung Heat Pumps. See also details on Drawing A101.
- 5 Refer to Civil Drawings for complete sidewalk layout.
- 6 Refer to Interior Design ID Drawings for all floor platform layout.

	New Concrete Block Walls. Dimension from face of wall to face of wall.
	New Stud Walls. Dimensions to center line.
	Existing Walls to remain.
	Room Number. See Room Schedule
	New Door Number. See Door and Frame Schedule
	New Window Number. See Drawing A602 for elevations
	Steel Columns Line and / or Steel Frame Line
	Center of Steel Column and / or Steel Frame
	Not in Contract
	Semi-Recessed Fire Extinguisher. See 10 44 16 and Detail 03/A100
	Post Mounted Door Bumper. See also Door Schedule

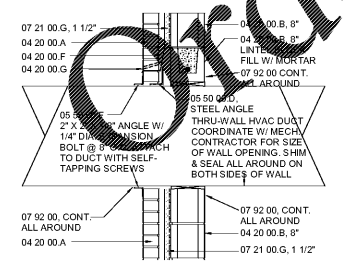


① FLOOR PLAN - LEVEL 01
1/8" = 1'-0"

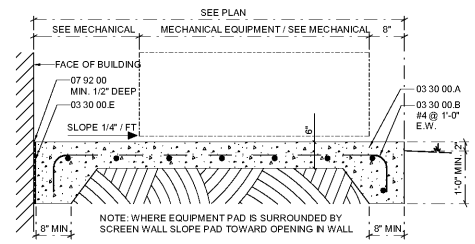


② FLOOR PLAN - LEVEL 02
1/8" = 1'-0"

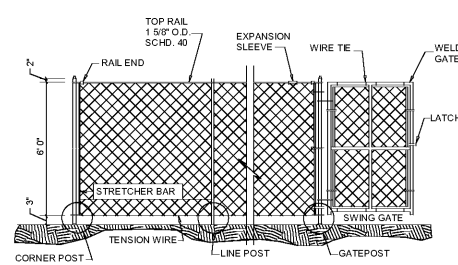
MODULAR BRICK



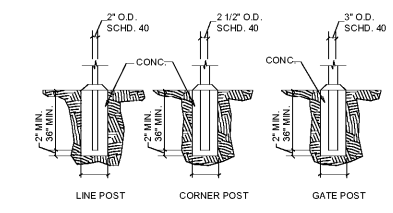
③ TYPICAL SECTION @ MECHANICAL DUCT THRU WALL
3/4" = 1'-0"



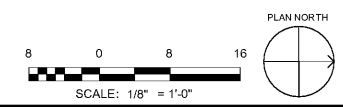
④ TYPICAL SECTION @ EXTERIOR EQUIPMENT PAD
3/4" = 1'-0"



6" CHAINLINK FENCE DETAIL
NOT TO SCALE



POST FOOTING DETAILS
NOT TO SCALE



S&E PROJECT NUMBER	01-615-057
BID PACKAGE / PHASING	BP-1
ISSUED FOR CONSTRUCTION	10/15/2019
Southern AE 7951 Traxon Circle Austell, GA 30168 (770) 519-7777 architects & engineers	REVISIONS
	R# Doc# Date
	1 AD1 11.4.2019

ADD ALTERNATE #1
BOARD OF EDUCATION OFFICE FOR:
HEARD COUNTY SCHOOLS
4647 PEA RIDGE ROAD, FRANKLIN, GA 30217
HEARD COUNTY SCHOOL SYSTEM
FRANKLIN, GEORGIA

FLOOR PLANS

	DRAWING NUMBER
	A101