

GENERAL NOTES TO FIRE PROTECTION / LIFE SAFETY PLAN

ALL BUILDINGS SHALL BE COMPLETELY SPRINKLED UTILIZING AN AUTOMATIC WET PIPE SPRINKLER SYSTEM INSTALLED IN ACCORDANCE WITH THE REQUIREMENTS OF N.F.P.A. 13. Refer to Project Manual Section 15200.

I.B.C. SECTION 302 - OCCUPANCY CLASSIFICATION & TYPE OF CONSTRUCTION
NEW BUSINESS OCCUPANCY
CONSTRUCTION TYPE IIB (I.B.C.), NON-COMBUSTIBLE, PROTECTED

I.B.C. SECTION 503 - BUILDING HEIGHT MODIFICATIONS
TYPE IIB
503.2 AUTOMATIC SPRINKLER SYSTEM
INCREASE:
MAX. NUMBER OF STORIES: 3 + 1 = 4
MAX. HEIGHT: 55' + 20' = 75'

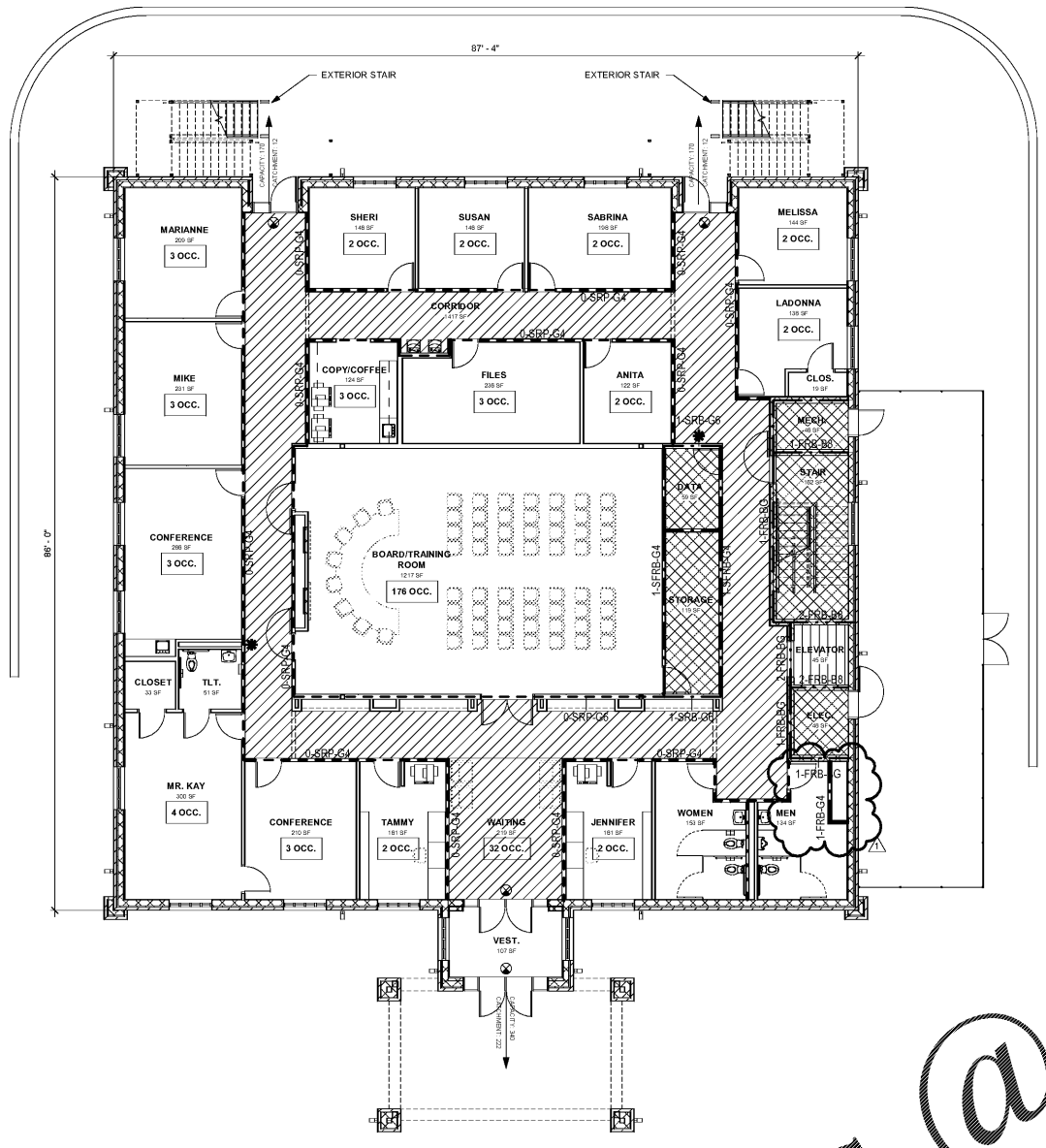
I.B.C. SECTION 506 - AREA MODIFICATIONS - NEW BUSINESS OCCUPANCY (MULTI-STORY BUILDING, TYPE IIB)
506.3 AUTOMATIC SPRINKLER SYSTEM INCREASE = 300% INCREASE
23,000 S.F. + 46,000 S.F. = 69,000 S.F.
506.1 FRONTAGE INCREASE = 75% INCREASE
23,000 S.F. X .75 = 17,250 S.F. INCREASE
TOTAL AREA INCREASE:
69,000 S.F. + 17,250 S.F. = 86,250 S.F. MAX. ALLOWABLE AREA

MINIMUM OCCUPANT LOAD (M.O.L.)
CALCULATED PER LIFE SAFETY CODE AS FOLLOWS:
LOBBY AREA - 7 S.F. PER PERSON
BOARD/TRAINING ROOM - 7 S.F. PER PERSON
OFFICE AREAS - 100 S.F. PER PERSON
KITCHEN AREA - 100 S.F. PER PERSON
PLAYING COURT - 15 S.F. PER PERSON
MULTIPURPOSE - 20 S.F. PER PERSON
STORAGE/ MECHANICAL/ ELECTRICAL - NONE

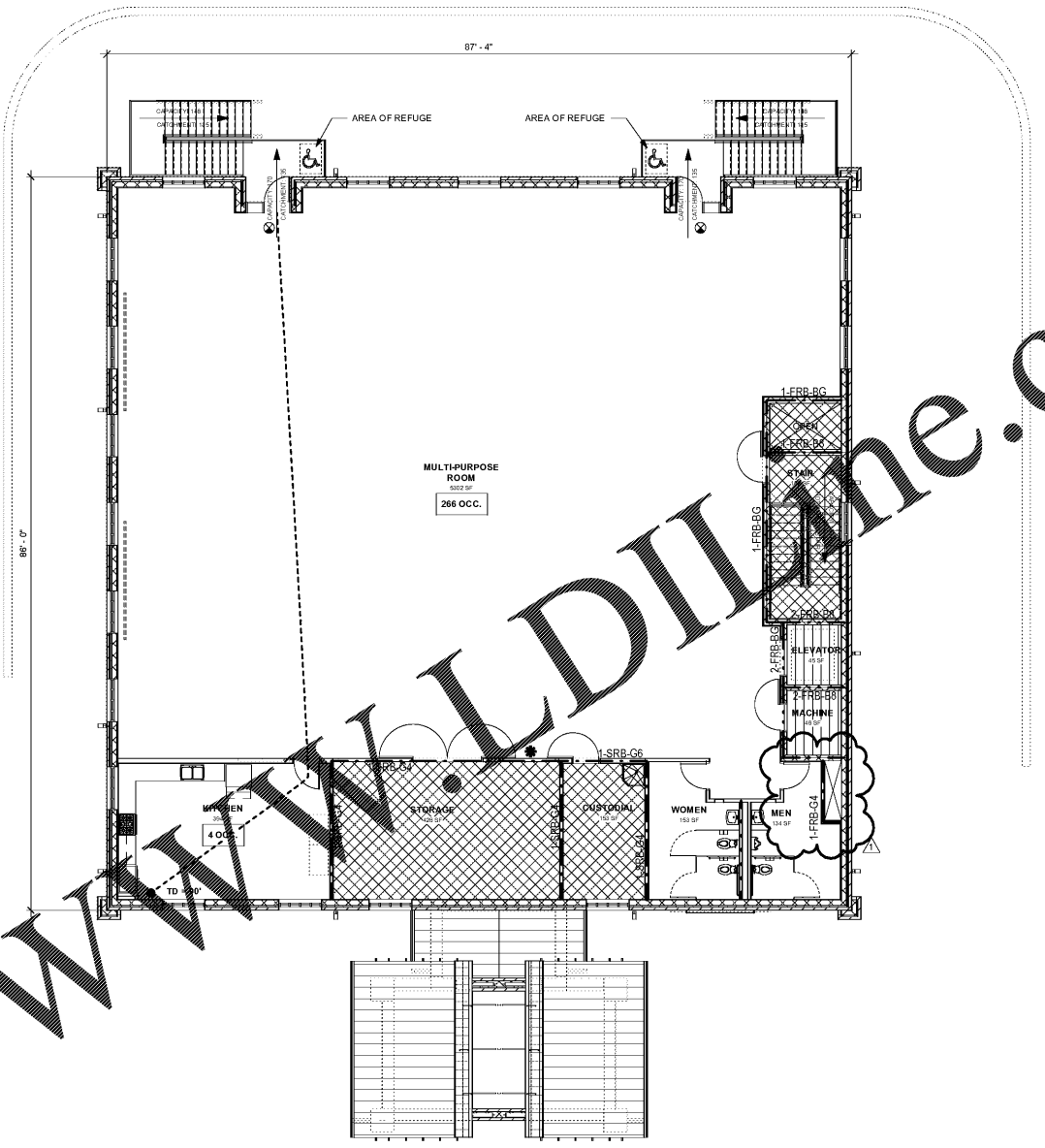
LEGEND TO LIFE SAFETY PLAN
1. Refer to Reflected Ceiling Plan for more detailed wall ratings and additional information on walls.

- Area Or Group of Areas Separated From The Remainder of Building By Partitions And/Or Ceilings Which Resist The Passage of Smoke
- Area Or Group of Areas Separated From The Remainder of Building By 1 Hour Fire Rated Partitions & Openings
- Area Separated By 2 Hour Fire Rated Partitions and Openings

- SEMI-RECESSED FIRE EXTINGUISHER
- EXIT LIGHT FIXTURE



1 LEVEL 01 LIFE SAFETY PLAN
1/8" = 1'-0"



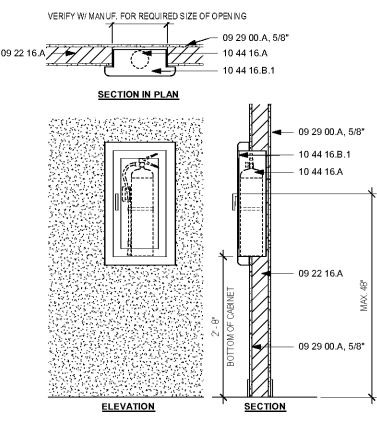
2 LEVEL 02 LIFE SAFETY PLAN
1/8" = 1'-0"

- LEGEND TO WALLS:
- LEGEND TO WALLS PROVIDES INFORMATION ON INTERIOR WALLS AND WALL RATINGS. REFER ALSO TO FLOOR PLANS, BUILDING SECTIONS, WALL SECTION AND L DETAILS FOR ADDITIONAL INFORMATION ON INTERIOR WALLS AND WALL RATINGS. REFER TO ELEVATIONS, BUILDING SECTIONS, WALL SECTION AND L DETAILS FOR INFORMATION ON EXTERIOR WALLS.
 - REFER TO DRAWING A701 FOR FIRESTOPPING DETAILS.
 - REFER TO DRAWING A702 & A703 FOR MECHANICAL U.L. DESIGN DETAILS.
 - CONTRACTOR SHALL CONSTRUCT ALL WALLS AS INDICATED ON DRAWINGS. CHANGES TO WALL DESIGN IS NOT ALLOWED WITHOUT APPROVAL OF ARCHITECT.
 - PROVIDE SPRAY FIREPROOFING ON ALL STEEL MEMBERS IN RATED ROOMS.
- ENVIRONMENTAL WALLS
- SMOKE RATED WALLS
 - ONE HOUR RATED WALLS
 - TWO HOUR RATED WALLS

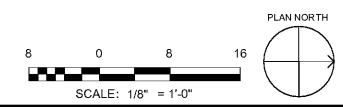
- 0-NRP-G4 *NON-RATED PARTITION - GWB*
NON-RATED DRYWALL (ONE LAYER OF REGULAR 1/2" GYPSUM WALL BOARD ON EACH SIDE OF 3/8" METAL STUDS @ 16" O.C.) UP TO FLOOR OR ROOF DECK. SEAL WALL AT UNDERSIDE OF DECK.
- 0-NRP-G6 *NON-RATED PARTITION - GWB*
NON-RATED DRYWALL (ONE LAYER OF REGULAR 1/2" GYPSUM WALL BOARD ON EACH SIDE OF 3/8" METAL STUDS @ 16" O.C.) UP TO MIN. 8" ABOVE CEILING UNLESS NOTED OTHERWISE ON DRAWINGS. SEE SPECIFICATIONS FOR METAL STUD REQUIREMENTS.
- 0-SRP-G4 *SMOKE RESISTIVE PARTITION - GWB*
NON-RATED DRYWALL (ONE LAYER OF REGULAR 1/2" GYPSUM WALL BOARD ON ONE SIDE OF 6" METAL STUDS @ 16" O.C.) UP TO FLOOR OR ROOF DECK. SEE SPECIFICATIONS FOR METAL STUDS REQUIREMENTS. SEAL WALL AT UNDERSIDE OF DECK.
- 0-SRP-G6 *SMOKE RESISTIVE PARTITION - GWB*
NON-RATED DRYWALL (ONE LAYER OF REGULAR 1/2" GYPSUM WALL BOARD ON ONE SIDE OF 6" METAL STUDS @ 16" O.C.) UP TO FLOOR OR ROOF DECK. SEE SPECIFICATIONS FOR METAL STUDS REQUIREMENTS. SEAL WALL AT UNDERSIDE OF DECK.

- 1-SRB-G4 *1 HOUR - SMOKE-RATED BARRIER - GWB*
1 HOUR FIRE-RATED DRYWALL (ONE LAYER OF FIRE-RATED 5/8" GYPSUM WALL BOARD ON EACH SIDE OF 3/8" METAL STUDS @ 16" O.C.) UP TO FLOOR OR ROOF DECK. SEE SPECIFICATIONS FOR METAL STUDS REQUIREMENTS. FIRESTOP WALL AT UNDERSIDE OF DECK. U.L. NO. U419 AND U506.
- 1-SRB-G6 *1 HOUR - SMOKE-RATED BARRIER - GWB*
1 HOUR FIRE-RATED DRYWALL (ONE LAYER OF FIRE-RATED 5/8" GYPSUM WALL BOARD ON EACH SIDE OF 6" METAL STUDS @ 16" O.C.) UP TO FLOOR OR ROOF DECK. SEE SPECIFICATIONS FOR METAL STUDS REQUIREMENTS. FIRESTOP WALL AT UNDERSIDE OF DECK. U.L. NO. U419 AND U506.
- 1-SRB-BG *1 HOUR - SMOKE-RATED BARRIER - CMU + GWB*
1 HOUR FIRE-RATED CONCRETE BLOCK WALL UP TO FIRST COURSE (MIN. 4") ABOVE CEILING. EXTEND WALL UP TO FLOOR OR ROOF DECK WITH 1 HOUR FIRE-RATED DRYWALL PARTITION (ONE LAYER OF FIRE-RATED 5/8" GYPSUM WALL BOARD ON EACH SIDE OF 3/8" METAL STUDS @ 16" O.C.). FIRESTOP WALL AT UNDERSIDE OF DECK. U.L. DESIGN NO. U419 AND U506.

- 1-FRB-BG *1 HOUR - FIRE-RATED BARRIER - CMU + GWB*
1 HOUR FIRE-RATED CONCRETE BLOCK WALL UP TO FIRST COURSE (MIN. 4") ABOVE CEILING. BLOCK THICKNESS AS INDICATED ON DRAWINGS. EXTEND WALL UP TO FLOOR OR ROOF DECK WITH 1 HOUR FIRE-RATED DRYWALL PARTITION (ONE LAYER OF FIRE-RATED 5/8" GYPSUM WALL BOARD ON EACH SIDE OF 3/8" METAL STUDS @ 16" O.C.). SEE SPECIFICATIONS FOR METAL STUDS REQUIREMENTS. FIRESTOP WALL AT UNDERSIDE OF DECK. U.L. DESIGN NO. U419 AND U506.
- 1-FRB-B *1 HOUR - FIRE RATED BARRIER - CMU*
1 HOUR FIRE-RATED CONCRETE BLOCK WALL UP TO FLOOR OR ROOF DECK. BLOCK THICKNESS AS INDICATED ON DRAWINGS. FIRESTOP WALL AT UNDERSIDE OF DECK. U.L. DESIGN NO. U419 AND U506.
- 2-FRB-BG *2 HOUR - FIRE-RATED BARRIER - CMU + GWB*
2 HOUR FIRE-RATED CONCRETE BLOCK WALL UP TO FIRST COURSE (MIN. 4") ABOVE CEILING. BLOCK THICKNESS AS INDICATED ON DRAWINGS. EXTEND WALL UP TO FLOOR OR ROOF DECK WITH 2 HOUR FIRE-RATED DRYWALL PARTITION (TWO LAYERS OF FIRE-RATED 5/8" GYPSUM WALL BOARD ON EACH SIDE OF 3/8" METAL STUDS @ 16" O.C.). SEE SPECIFICATIONS FOR METAL STUDS REQUIREMENTS. FIRESTOP WALL AT UNDERSIDE OF DECK. U.L. DESIGN NO. U419 AND U506.
- 2-FRB-B *2 HOUR - FIRE-RATED BARRIER - CMU*
2 HOUR FIRE-RATED CONCRETE BLOCK WALL UP TO FLOOR OR ROOF DECK. BLOCK THICKNESS AS INDICATED ON DRAWINGS. FIRESTOP WALL AT UNDERSIDE OF DECK. U.L. DESIGN NO. U419 AND U506.



3 SEMI-RECESSED FIRE EXTINGUISHER
3/4" = 1'-0"



SA&E PROJECT NUMBER	01-615-057	
BID PACKAGE / PHASING	BP-1	
ISSUED FOR CONSTRUCTION	10/15/2019	
REVISIONS		
R #	Doc #	Date
1	AD1	11.4.2019

Southern AE
7951 Truon Circle
Austell, Ga 30168
(770) 519-7777
architects & engineers

ADD ALTERNATE #1
BOARD OF EDUCATION OFFICE FOR:
HEARD COUNTY SCHOOLS
4647 PEA RIDGE ROAD, FRANKLIN, GA 30217
HEARD COUNTY SCHOOL SYSTEM
FRANKLIN, GEORGIA

LIFE SAFETY PLANS	
DRAWING NUMBER	A100

Order Plans @

WWW.DILANE.COM