

**Sd2-P CURB INLET FILTER**  
NOT TO SCALE

**Sd2 ALTERNATIVE SEDIMENT BARRIER**  
NOT TO SCALE

**Sd2-F FABRIC & SUPPORTING FRAME DETAIL**  
NOT TO SCALE

**Sd4 SODDING DETAIL**  
NOT TO SCALE

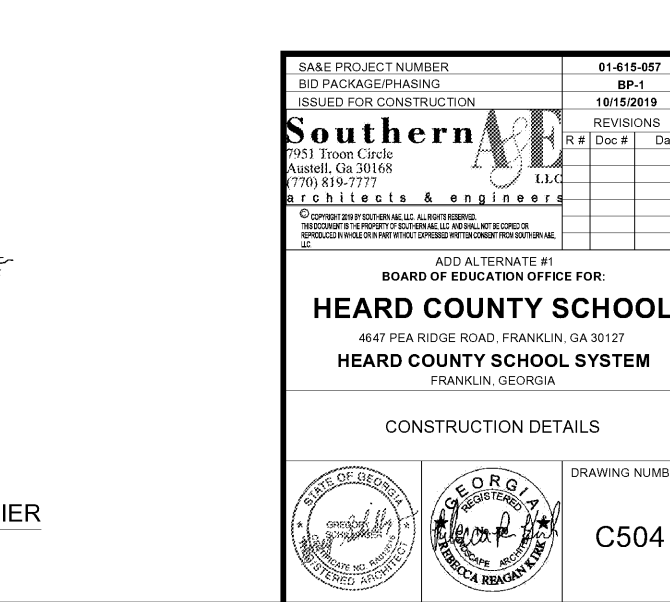
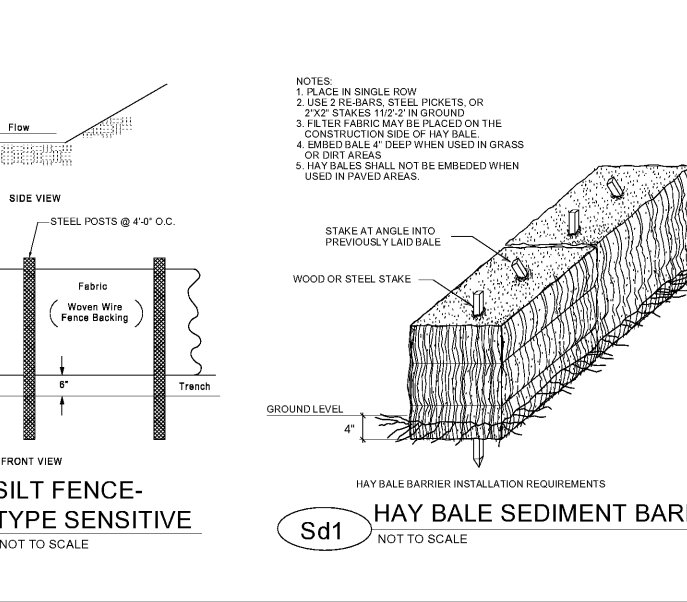
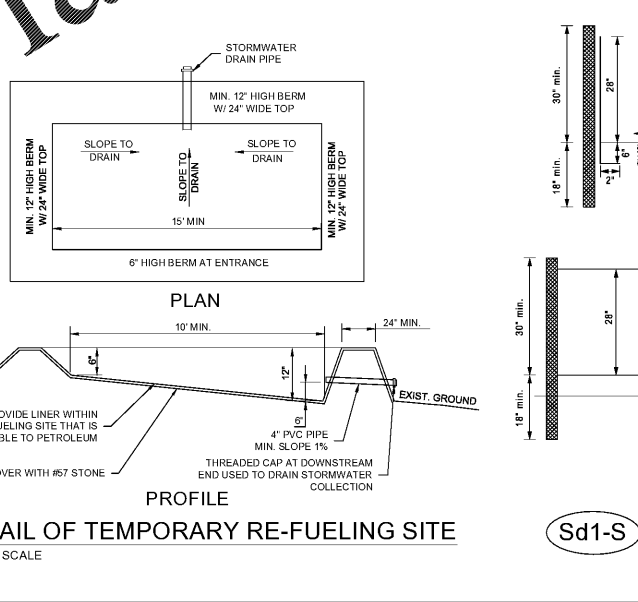
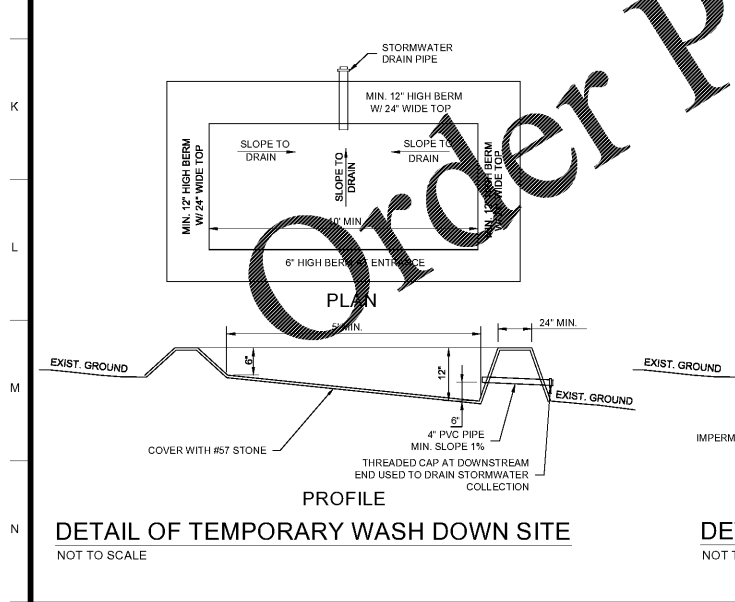
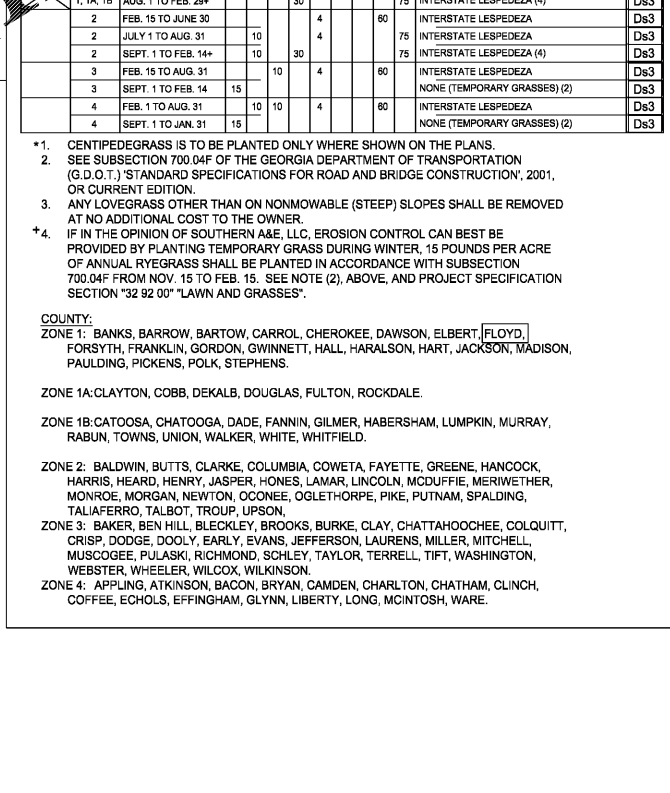
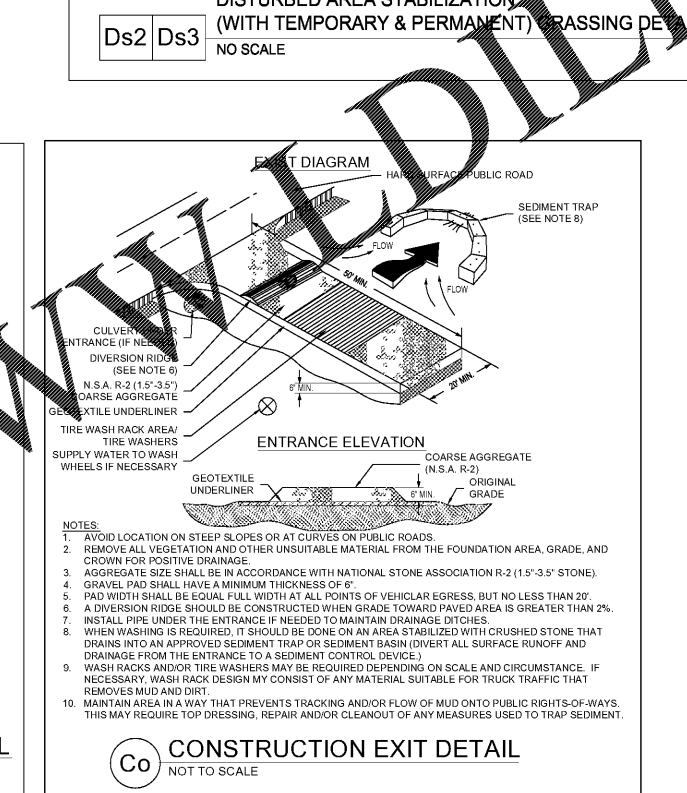
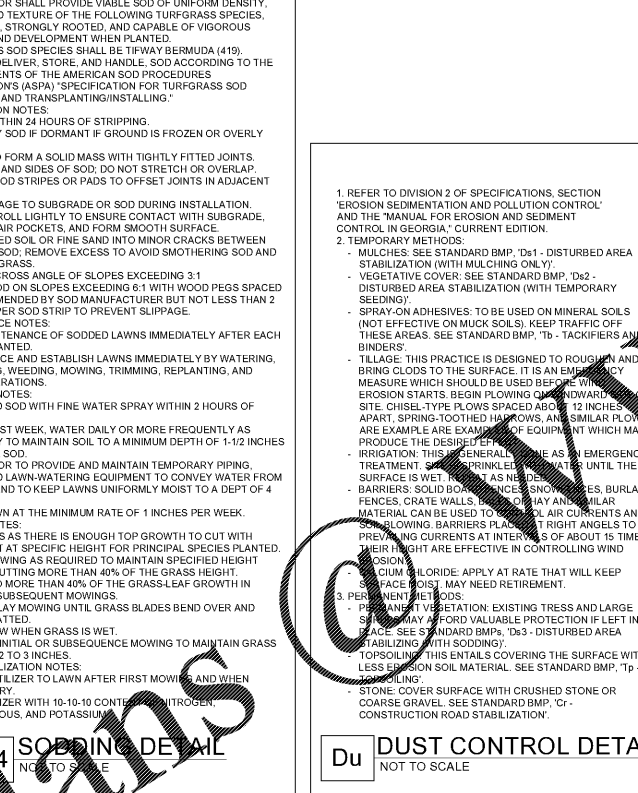
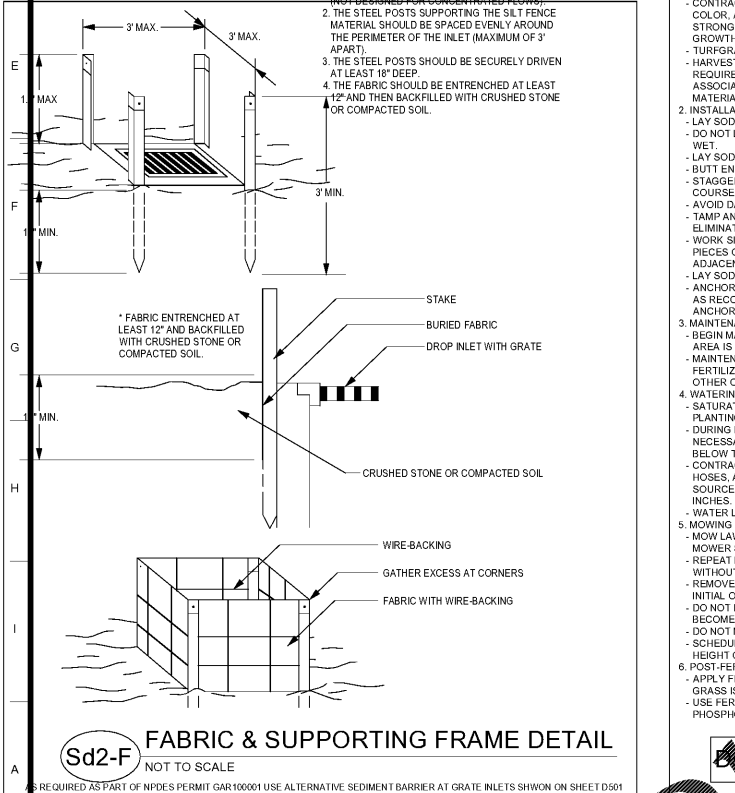
SPECIES	YEAR	N-P-K	RATE	LIME RATE	HAY/STRAW RATE %	REQUIREMENTS	
						DESIGNATION	REMARKS
COOL SEASON GRASSES	FIRST	6-12-12	1500 LBS/AC	2,000 LBS/AC	2.5 TONS/AC	Ds3	
	SECOND	6-12-12	1000 LBS/AC			Ds4	
	MAINTENANCE	10-10-10	400 LBS/AC				
COOL SEASON GRASSES AND LEGUMES	FIRST	6-12-12	1500 LBS/AC	2,000 LBS/AC	2.5 TONS/AC	Ds3	
	SECOND	6-12-12	1000 LBS/AC			Ds4	
	MAINTENANCE	10-10-10	400 LBS/AC				
GROUND COVER	FIRST	10-10-10	1300 LBS/AC *3	2,000 LBS/AC	2.5 TONS/AC		
	SECOND	10-10-10	1300 LBS/AC *3				
	MAINTENANCE	10-10-10	1100 LBS/AC				
TEMPORARY COVER CROPS SEEDED ALONE	FIRST	10-10-10	800 LBS/AC	2,000 LBS/AC	2.5 TONS/AC	Ds2	
	SECOND	6-12-12	800 LBS/AC			Ds3	
	MAINTENANCE	10-10-10	400 LBS/AC	30 LBS/AC		Ds4	
WARM SEASON GRASSES	FIRST	6-12-12	1500 LBS/AC	2,000 LBS/AC	2.5 TONS/AC	Ds3	
	SECOND	6-12-12	800 LBS/AC			Ds4	
	MAINTENANCE	10-10-10	400 LBS/AC	50 LBS/AC *6			
WARM SEASON GRASSES AND LEGUMES	FIRST	6-12-12	1500 LBS/AC	2,000 LBS/AC	2.5 TONS/AC	Ds3	
	SECOND	6-12-12	1000 LBS/AC			Ds4	
	MAINTENANCE	0-10-10	400 LBS/AC				

NOTES:  
 \*1 APPLY IN SPRING FOLLOWING SEEDING  
 \*2 APPLY IN SPLIT APPLICATIONS WHEN HIGH RATES ARE USED  
 \*3 APPLY IN 3 SPLIT APPLICATIONS  
 \*4 APPLY WHEN PLANTS ARE PRUNED  
 \*5 APPLY TO GRASS SPECIES ONLY  
 \*7 MULCH SHALL BE APPLIED TO COVER 75% OF THE GROUND MIN.

NAME	COUNTY	PLANTING ZONES	PLANTING DATES	POUNDS OF SEED PER ACRE										REQUIRED PERMANENT PLANT
				1	2	3	4	5	6	7	8	9	10	
FOR Ds2 & Ds3														
THESE COMBINATIONS SHALL BE PLACED ON SHOULDERS, MEDIANS AND RELATIVELY FLAT AREAS														
1B	MARCH 1 TO MAY 15	10	10	10	10	10	10	10	10	10	10	10	10	TALL RESCUE OR COMMON BERMU DAGRASS
1, 1B	MARCH 1 TO MAY 15	10	10	10	10	10	10	10	10	10	10	10	10	COMMON BERMU DAGRASS
1, 1B	MAY 16 TO JULY 31	10	10	10	10	10	10	10	10	10	10	10	10	COMMON BERMU DAGRASS
1, 1B	AUG. 1 TO FEB. 28	15	15	15	15	15	15	15	15	15	15	15	15	NONE (TEMPORARY GRASSES) (2)
1A	FEB. 15 TO APRIL 30	10	10	10	10	10	10	10	10	10	10	10	10	COMMON BERMU DAGRASS
1A	MAY 1 TO AUG. 15	10	10	10	10	10	10	10	10	10	10	10	10	COMMON BERMU DAGRASS
1A	AUG. 16 TO FEB. 14	15	15	15	15	15	15	15	15	15	15	15	15	NONE (TEMPORARY GRASSES) (2)
2	FEB. 15 TO APRIL 15	10	10	10	10	10	10	10	10	10	10	10	10	COMMON BERMU DAGRASS
2	APRIL 16 TO AUG. 31	10	10	10	10	10	10	10	10	10	10	10	10	COMMON BERMU DAGRASS
2	SEPT. 1 TO FEB. 14	15	15	15	15	15	15	15	15	15	15	15	15	NONE (TEMPORARY GRASSES) (2)
3	FEB. 15 TO APRIL 31	10	10	10	10	10	10	10	10	10	10	10	10	COMMON BERMU DAGRASS
3	MAR. 15 TO AUG. 15	10	10	10	10	10	10	10	10	10	10	10	10	CENTPEDEGRASS (1)
3	SEPT. 1 TO FEB. 14	15	15	15	15	15	15	15	15	15	15	15	15	NONE (TEMPORARY GRASSES) (2)
3	FEB. 15 TO APRIL 31	10	10	10	10	10	10	10	10	10	10	10	10	COMMON BERMU DAGRASS
3	MAR. 15 TO AUG. 15	10	10	10	10	10	10	10	10	10	10	10	10	CENTPEDEGRASS (1)
3	SEPT. 1 TO FEB. 14	15	15	15	15	15	15	15	15	15	15	15	15	NONE (TEMPORARY GRASSES) (2)
4	FEB. 15 TO APRIL 31	10	10	10	10	10	10	10	10	10	10	10	10	COMMON BERMU DAGRASS
4	MAR. 15 TO AUG. 15	10	10	10	10	10	10	10	10	10	10	10	10	CENTPEDEGRASS (1)
4	SEPT. 1 TO FEB. 14	15	15	15	15	15	15	15	15	15	15	15	15	NONE (TEMPORARY GRASSES) (2)
THESE COMBINATIONS SHALL BE PLANTED ON BACK SLOPES, FILL SLOPES AND AREAS WHICH WILL NOT BE SUBJECT TO FREQUENT MOWING														
1, 1A, 1B	MARCH 1 TO JULY 31	10	10	10	10	10	10	10	10	10	10	10	10	INTERSTATE LESPEDEZA
1, 1A, 1B	AUG. 1 TO FEB. 28*	30	30	30	30	30	30	30	30	30	30	30	30	INTERSTATE LESPEDEZA (4)
2	FEB. 15 TO JUNE 30	10	10	10	10	10	10	10	10	10	10	10	10	INTERSTATE LESPEDEZA
2	JULY 1 TO AUG. 31	10	10	10	10	10	10	10	10	10	10	10	10	INTERSTATE LESPEDEZA
2	SEPT. 1 TO FEB. 14*	30	30	30	30	30	30	30	30	30	30	30	30	INTERSTATE LESPEDEZA (4)
3	FEB. 15 TO AUG. 31	10	10	10	10	10	10	10	10	10	10	10	10	INTERSTATE LESPEDEZA
3	SEPT. 1 TO FEB. 14	15	15	15	15	15	15	15	15	15	15	15	15	NONE (TEMPORARY GRASSES) (2)
4	FEB. 15 TO AUG. 31	10	10	10	10	10	10	10	10	10	10	10	10	INTERSTATE LESPEDEZA
4	SEPT. 1 TO JAN. 31	15	15	15	15	15	15	15	15	15	15	15	15	NONE (TEMPORARY GRASSES) (2)

\*1. CENTPEDEGRASS IS TO BE PLANTED ONLY WHERE SHOWN ON THE PLANS.  
 \*2. SEE SUBSECTION 700.04F OF THE GEORGIA DEPARTMENT OF TRANSPORTATION (G.D.O.T.) 'STANDARD SPECIFICATIONS FOR ROAD AND BRIDGE CONSTRUCTION', 2001, OR CURRENT EDITION.  
 \*3. ANY LOVEGRASS OTHER THAN ON NONMOWABLE (STEEP) SLOPES SHALL BE REMOVED AT NO ADDITIONAL COST TO THE OWNER.  
 \*4. IF IN THE OPINION OF SOUTHERN A&E, L.L.C. EROSION CONTROL CAN BEST BE PROVIDED BY PLANTING TEMPORARY GRASS DURING WINTER, 15 POUNDS PER ACRE OF ANNUAL RYEGRASS SHALL BE PLANTED IN ACCORDANCE WITH SUBSECTION 700.04F FROM NOV. 15 TO FEB. 15. SEE NOTE (2), ABOVE, AND PROJECT SPECIFICATION SECTION '32.92 00' 'LAWN AND GRASSES'.

COUNTY:  
 ZONE 1: BANKS, BARROW, BARTOW, CARROLL, CHEROKEE, DAWSON, ELBERT, FLOYD, FORSYTH, FRANKLIN, GORDON, GWINNETT, HALL, HARALSON, HART, JACKSON, MADISON, PAULDING, PICKENS, POLK, STEPHENS.  
 ZONE 1A: CLAYTON, COBB, DEKALB, DOUGLAS, FULTON, ROCKDALE.  
 ZONE 1B: CATOOSA, CHATTAHOOCHEE, DADE, FANNIN, GILMER, HABERSHAM, LUMPKIN, MURRAY, RABUN, TOWNS, UNION, WALKER, WHITE, WHITFIELD.  
 ZONE 2: BALDWIN, BUTTS, CLARKE, COLUMBIA, COWETA, FAYETTE, GREENE, HANCOCK, HARRIS, HEARD, HENRY, JASPER, HONES, LAMAR, LINCOLN, MCDUFFIE, MERIWETHER, MONROE, MORGAN, NEWTON, OCONEE, OGLETHORPE, PIKE, PUTNAM, SPALDING, TALIAFERRO, TALBOT, TROUP, UPSON.  
 ZONE 3: BAKER, BEN HILL, BLECKLEY, BROOKS, BURKE, CLAY, CHATTAHOOCHEE, COLQUITT, CRISP, DODGE, DOOLY, EARLY, EVANS, JEFFERSON, LAURENS, MILLER, MITCHELL, MUSCOGEE, PULASKI, RICHMOND, SCHLEY, TAYLOR, TERRELL, TIFT, WASHINGTON, WEBSTER, WHEELER, WILCOX, WILKINSON.  
 ZONE 4: APPLING, ATKINSON, BACON, BRYAN, CAMDEN, CHARLTON, CHATHAM, CLINCH, COFFEY, ECHOLS, EFFINGHAM, GLYNN, LIBERTY, LONG, MCINTOSH, WARE.



Order Plans

SA&E PROJECT NUMBER	01-615-057
BID PACKAGE/PHASING	BP-1
ISSUED FOR CONSTRUCTION	10/15/2019
REVISIONS	
ADD ALTERNATE #1 <b>BOARD OF EDUCATION OFFICE FOR:</b> <b>HEARD COUNTY SCHOOL</b> 4647 PEA RIDGE ROAD, FRANKLIN, GA 30127 <b>HEARD COUNTY SCHOOL SYSTEM</b> FRANKLIN, GEORGIA	
CONSTRUCTION DETAILS	
	DRAWING NUMBER <b>C504</b>