

N/F  
CAROL B. & RONALD W.  
CORBISELLO  
DB 447 PG 581  
DB 448 PG 184  
PB 15 PG 6

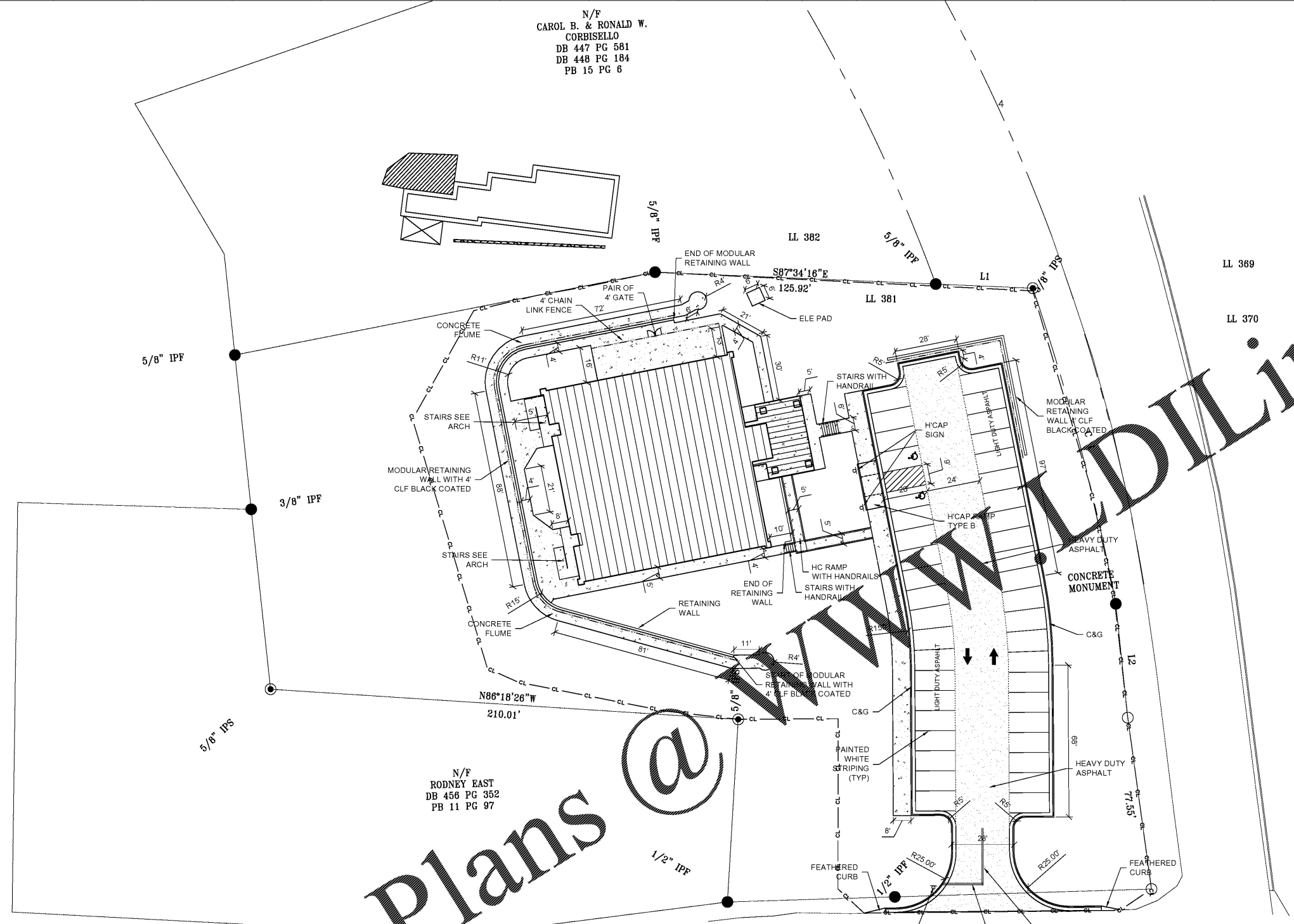
N/F  
RODNEY EAST  
DB 456 PG 352  
PB 11 PG 97

B. THOMAS MILLER, ETAL  
DB 394 PG 209  
DB 262 PG 77  
DB 206 PG 625  
PB 11 PG 97  
1.9313 ACRES  
±84,129 SQFT

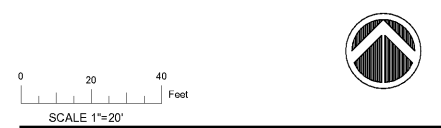
- STAKING NOTES:**
- ALL DIMENSIONS REFERENCING CURB AND GUTTER ARE MEASURED TO BACK OF CURB.
  - THE DEPTH OF PROPOSED PAVEMENT AND BUILDINGS ARE AS FOLLOWS:
    - BUILDING SLAB & BASE - 8"
    - LIGHT DUTY PAVEMENT - 9 1/2"
    - HEAVY DUTY PAVEMENT - 11 1/2"
    - CONCRETE PAVEMENT - 7"
    - SIDEWALK - 4"
  - A DWG COMPUTER FILE WILL BE AVAILABLE FROM ENGINEER FOR CONSTRUCTION LAYOUT.
  - ALL CAR PARKING STALLS AND STRIPED ISLANDS SHALL BE PAINTED WITH 4" WHITE STRIPES AS SHOWN. ALL SIGNAGE/STRIPING PER MUTCD LATEST EDITION.
  - ALL STRIPING IN R/W SHALL BE THERMOPLASTIC.

**STAKING LEGEND:**

- BUILDING
- HEAVY-DUTY ASPHALT
- CONCRETE SIDEWALK
- CURB & GUTTER
- HANDICAP PARKING
- PAVEMENT MARKINGS



Order Plans @



SA&E PROJECT NUMBER	01-615-057	
BID PACKAGE/PHASING	BP-1	
ISSUED FOR CONSTRUCTION	10/15/2019	
<b>REVISIONS</b>		
R #	Doc #	Date
1	AD1	11.4.2019

**Southern A&E**  
7951 Troon Circle  
Austell, Ga 30168  
(770) 819-7777  
I.L.C.  
Architects & Engineers

© COPYRIGHT 2019 BY SOUTHERN A&E, L.L.C. ALL RIGHTS RESERVED.  
THIS DOCUMENT IS THE PROPERTY OF SOUTHERN A&E, L.L.C. AND SHALL NOT BE COPIED OR REPRODUCED IN WHOLE OR IN PART WITHOUT EXPRESS WRITTEN CONSENT FROM SOUTHERN A&E, L.L.C.

ADD ALTERNATE #1  
BOARD OF EDUCATION OFFICE FOR:  
**HEARD COUNTY SCHOOL**  
4647 PEA RIDGE ROAD, FRANKLIN, GA 30127  
**HEARD COUNTY SCHOOL SYSTEM**  
FRANKLIN, GEORGIA

STAKING PLAN

DRAWING NUMBER  
**C102**

**CAUTION:**

THE UTILITIES SHOWN ARE SHOWN FOR THE CONTRACTOR'S CONVENIENCE ONLY. OTHER UTILITIES MAY BE PRESENT BUT NOT SHOWN ON THESE DRAWINGS. THE ARCHITECT & ENGINEER ASSUME NO RESPONSIBILITY FOR THE UTILITY LOCATIONS SHOWN, AND IT SHALL BE THE CONTRACTOR'S RESPONSIBILITY TO DETERMINE THE EXACT LOCATIONS OF ALL UTILITIES WITHIN THE LIMITS OF THE WORK. ALL DAMAGE MADE TO THE EXISTING UTILITIES BY THE CONTRACTOR SHALL BE REPAIRED TO A "LIKE NEW" CONDITION. THE CONTRACTOR SHALL BEAR THE SOLE RESPONSIBILITY FOR ANY LOSSES THAT OCCUR FROM DAMAGES TO THE EXISTING UTILITIES.

Know what's below.  
Call before you dig.  
**Dial 811.**  
**GEORGIA**  
Safe Digging is a SHARED responsibility, and in Georgia it's the law.  
811 or 1-800-282-7411  
www.Georgia811.com