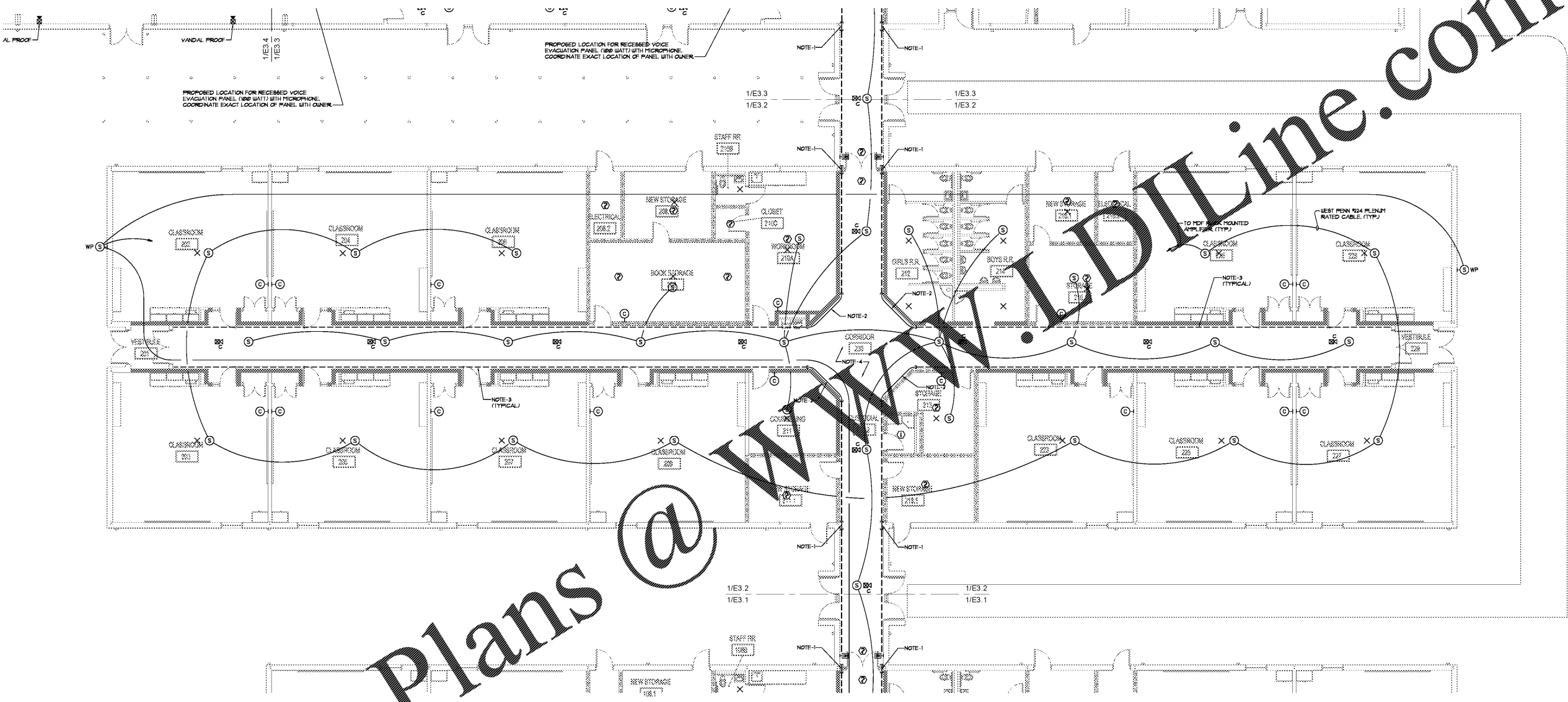




MATHIS & ROBERTS
CONSULTING ENGINEERS
244 ODELL ROAD SUITE 6
DUBLIN, GEORGIA 31008
404-261-9400

NO.	DESCRIPTION	DATE

DUNLEITH ELEMENTARY SCHOOL
RENOVATIONS & MODIFICATIONS
120 SAINTE DR. SW
MARIETTA, GA 30008
MARIETTA CITY SCHOOLS



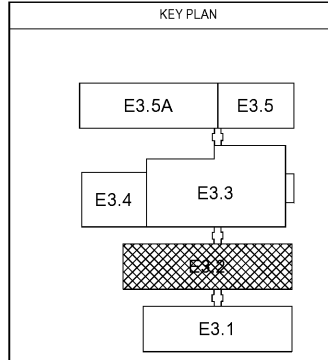
Order Plans @ WWW.DIline.com

INTERCOM SYMBOL LEGEND

☎	PHONE
Ⓜ	3MM AUDIO INPUT JACK
ⓐ	EXISTING CALL STATION TO BE BLANKED OFF (NEW STAINLESS STEEL COVERPLATE) (REFER TO GENERAL ELECTRICAL NOTE 10/)
Ⓢ	EXISTING GYMNAST BREAKER TO REMAIN
ⓈEX	EXISTING GYMNAST BREAKER TO REMAIN
ⓗ	WIDE ANGLE PAGING PROJECTOR
Ⓢ	NEW 240 LAY-IN BREAKER
ⓈWP	WEATHERPROOF BREAKER WITH STAINLESS STEEL GRILL

1
E3.2 FLOOR PLAN - BLDG 200 - SYSTEMS
SCALE: 1/8" = 1'-0"

- ELECTRICAL NOTES**
- REFER TO DETAIL 3E31. INSTALL 2 # 4" CONDUITS THROUGH RATED WALL. SPACE CONDUITS AT LEAST 4" APART.
 - INSTALL 2 # 4" CONDUITS ABOVE HARD CEILING. SPACE CONDUITS AT LEAST 4" APART.
 - REFER TO DETAIL 3E31.
 - REFER TO GENERAL ELECTRICAL NOTES 10/, 11/, 12/, 13/, 14/, 15/, 16/, 17/, 18/, AND 19/ ON DRAWING SET.



FLOOR PLAN - BLDG. 200 - SYSTEMS

DATE 08/30/2019
PROJECT NO. 18122

E3.2