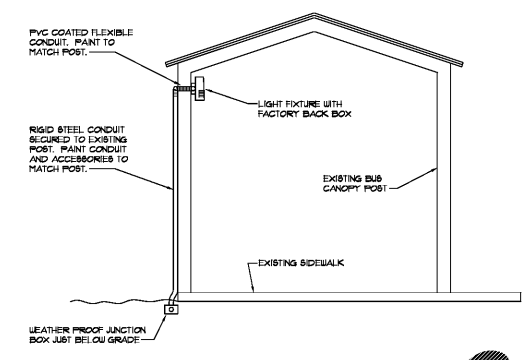
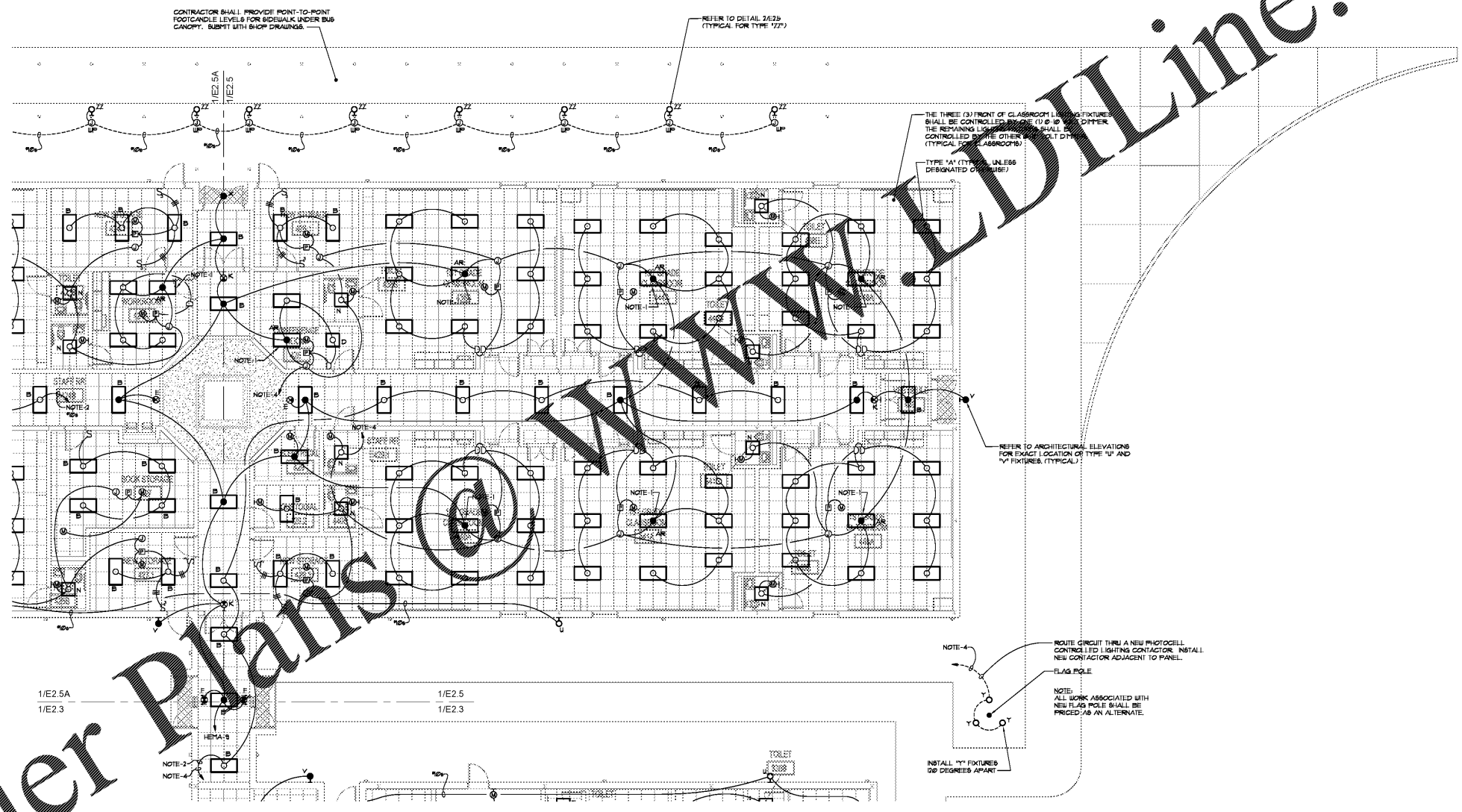


# Order Plans @ WWW.IDLine.com



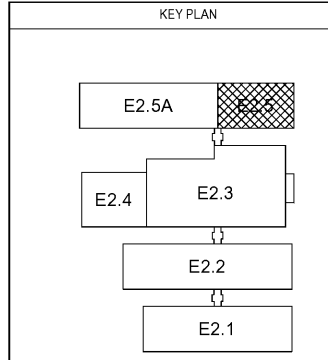
**2 BUS CANOPY LIGHTING FIXTURE DETAIL**  
E2.5 NOT TO SCALE



**1 PARTIAL FLOOR PLAN - BLDG 400 - LIGHTING**  
E2.5 SCALE: 1/8" = 1'-0"

- NOTES:**
- WALL MOUNTED ELECTRICAL DEVICES SHALL NOT BE INSTALLED BACK TO BACK.
  - EACH 'HOT' SHALL HAVE A DEDICATED NEUTRAL. SHARING OF NEUTRALS IS NOT ALLOWED.
  - UL LISTED, FINE MESHED, PUTTY PADS SHALL BE INSTALLED ON ALL JUNCTION BOXES INSTALLED IN RATED WALLS.
  - INSTALL BLANK STAINLESS STEEL COVERPLATES OVER ANY UNUSED LIGHT SWITCH JUNCTION BOXES.

- ELECTRICAL NOTES**
1. DURING NORMAL CONDITIONS EMERGENCY FIXTURE SHALL BE DIMMED WITH OTHER FIXTURES IN THE ROOM. DURING AN 'OUTAGE' FIXTURE SHALL BE CONNECTED TO EMERGENCY CIRCUIT, VIA RELAY, AND OPERATE AT FULL BRIGHTNESS.
  2. ROUTE CIRCUIT THRU 'INTERIOR LIGHTING CONTACTOR'.
  3. ROUTE CIRCUIT THRU 'EXTERIOR LIGHTING CONTACTOR'.
  4. EXTEND AND CONNECT TO AN EXISTING 200/40 BREAKER IN EXISTING 211460 VOLT LIGHTING PANEL. PROPERLY UPDATE PANEL DIRECTORY.



PARTIAL FLOOR PLAN - BLDG. 400 - LIGHTING

DATE 08/30/2019  
PROJECT NO. 18122

**E2.5**



**MATHIS & ROBERTS CONSULTING ENGINEERS**  
344 ODELL ROAD SUITE 6  
DUBLIN, GEORGIA 31034  
TEL: 404.211.8484

NO.	DESCRIPTION	DATE

**DUNLEITH ELEMENTARY SCHOOL RENOVATIONS & MODIFICATIONS**  
120 SAINTE DR. SW  
MARIETTA, GA 30008

MARIETTA CITY SCHOOLS