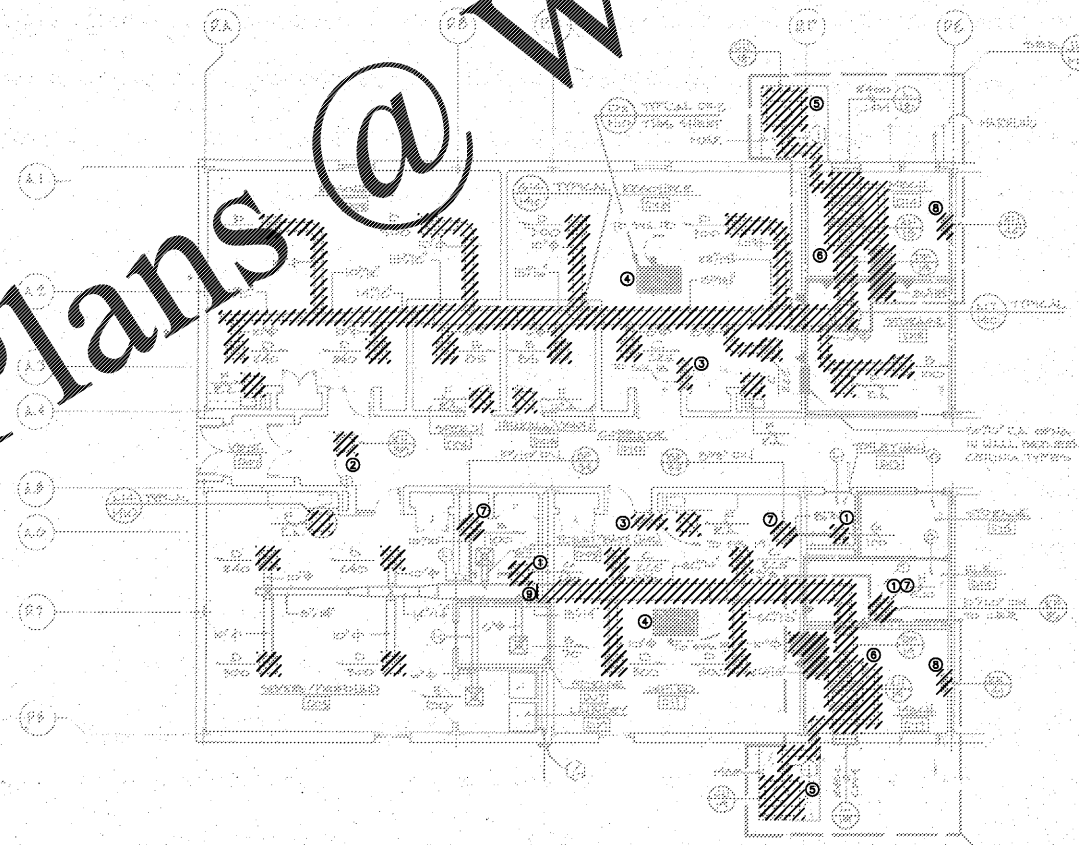


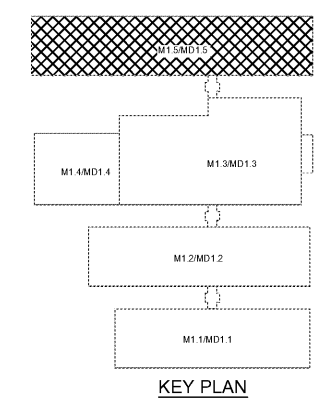
1 WING D CLASSROOMS-PARTIAL HVAC DEMOLITION PLAN  
MD15 1/8" = 1'-0"

- GENERAL NOTE:**
1. REMOVE ALL EXISTING DDC CONTROLS. ALL COMPONENTS SHALL BE TURNED OVER TO OWNER.
- KEY NOTES:** (1/MD1.5)
1. EXISTING CEILING DEVICE AND ASSOCIATED FLEX DUCT (IF APPLICABLE) TO BE REPLACED.
  2. EXISTING ELECTRIC CEILING HEATER AND ASSOCIATED THERMOSTAT TO BE REPLACED.
  3. REMOVE EXISTING TIME SWITCH, THERMOSTAT, AND NIGHT THERMOSTAT. COVER UNUSED JUNCTION BOXES WITH STAINLESS STEEL COVER PLATE.
  4. REMOVE EXISTING MOTOR OPERATED DAMPER, DAMPER OPERATOR, AND ALL RELATED CONTROLS AT SYSTEM RELIEF VENT. CLOSE OFF RELIEF OPENING WITH INSULATED SHEET METAL CAP.
  5. REMOVE EXISTING CONDENSING UNIT AND ALL RELATED PIPING AND CONTROLS. RECOVER REFRIGERANT FROM UNIT TO BE REMOVED - SEE SPECIFICATIONS. DEMO CONCRETE HOUSEKEEPING PAD AND CHAIN LINK FENCE. FILL IN WITH DIRT TO MATCH SURROUNDING GRADE AND SOD DISTURBED AREA.
  6. REMOVE EXISTING AIR HANDLER AND DUCT FURNACE AND ALL RELATED PIPING, DUCTWORK, AND CONTROLS. CAP EXISTING FLUE FROM DUCT FURNACE BELOW ROOF.
  7. EXISTING FAN ON ROOF TO BE REPLACED.
  8. EXISTING ELECTRIC WALL HEATER TO BE REPLACED.
  9. PROVIDE SHEET-METAL BLANK-OFF BEHIND EXISTING SOFFIT GRILLES AT CONNECTION CORRIDOR.

- GENERAL NOTE:**
1. REMOVE ALL EXISTING DDC CONTROLS. ALL COMPONENTS SHALL BE TURNED OVER TO OWNER.
- KEY NOTES:** (2/MD1.5)
1. EXISTING CEILING DEVICE AND ASSOCIATED FLEX DUCT (IF APPLICABLE) TO BE REPLACED.
  2. EXISTING ELECTRIC CEILING HEATER AND ASSOCIATED THERMOSTAT TO BE REPLACED.
  3. REMOVE EXISTING TIME SWITCH, THERMOSTAT, AND NIGHT THERMOSTAT. COVER UNUSED JUNCTION BOXES WITH STAINLESS STEEL COVER PLATE.
  4. REMOVE EXISTING MOTOR OPERATED DAMPER, DAMPER OPERATOR, AND ALL RELATED CONTROLS AT SYSTEM RELIEF VENT. CLOSE OFF RELIEF OPENING WITH INSULATED SHEET METAL CAP.
  5. REMOVE EXISTING CONDENSING UNIT AND ALL RELATED PIPING AND CONTROLS. RECOVER REFRIGERANT FROM UNIT TO BE REMOVED - SEE SPECIFICATIONS. DEMO CONCRETE HOUSEKEEPING PAD AND CHAIN LINK FENCE. FILL IN WITH DIRT TO MATCH SURROUNDING GRADE AND SOD DISTURBED AREA.
  6. REMOVE EXISTING AIR HANDLER AND DUCT FURNACE AND ALL RELATED PIPING, DUCTWORK, AND CONTROLS. CAP EXISTING FLUE FROM DUCT FURNACE BELOW ROOF.
  7. EXISTING FAN ON ROOF TO BE REPLACED.
  8. EXISTING ELECTRIC WALL HEATER TO BE REPLACED.
  9. EXISTING DUCTWORK BEYOND THIS POINT TO REMAIN. SEE RENOVATION PLAN FOR CONNECTION OF NEW DUCT.



2 WING D CLASSROOMS-PARTIAL HVAC DEMOLITION PLAN  
MD15 1/8" = 1'-0"



**BXA**  
Breux & Associates  
ARCHITECTS  
5995 Shiloh Road East, Suite 200  
Alpharetta, Georgia 30005 | (678) 585-4506

GEORGIA  
REGISTERED  
MECHANICAL  
ENGINEER  
JOHN E. MATES  
08/30/2019

**BRAF**  
MECHANICAL  
ENGINEERS INC  
100 Kings Street, Suite 103  
Marietta, GA 30066  
770.428.3500

DUNLEITH ELEMENTARY SCHOOL  
RENOVATIONS & MODIFICATIONS  
120 SAINTE DR. SW  
MARIETTA, GA 30008  
MARIETTA CITY SCHOOLS

WING D  
CLASSROOMS-  
HVAC  
DEMOLITION  
PLAN

DATE 08/30/2019  
PROJECT NO. 18122

MD1.5