



**MECHANICAL ENGINEERS INC**  
500 Blake Street, Suite 113, Marietta, GA 30066  
770-429-3500

NO.	DESCRIPTION	DATE

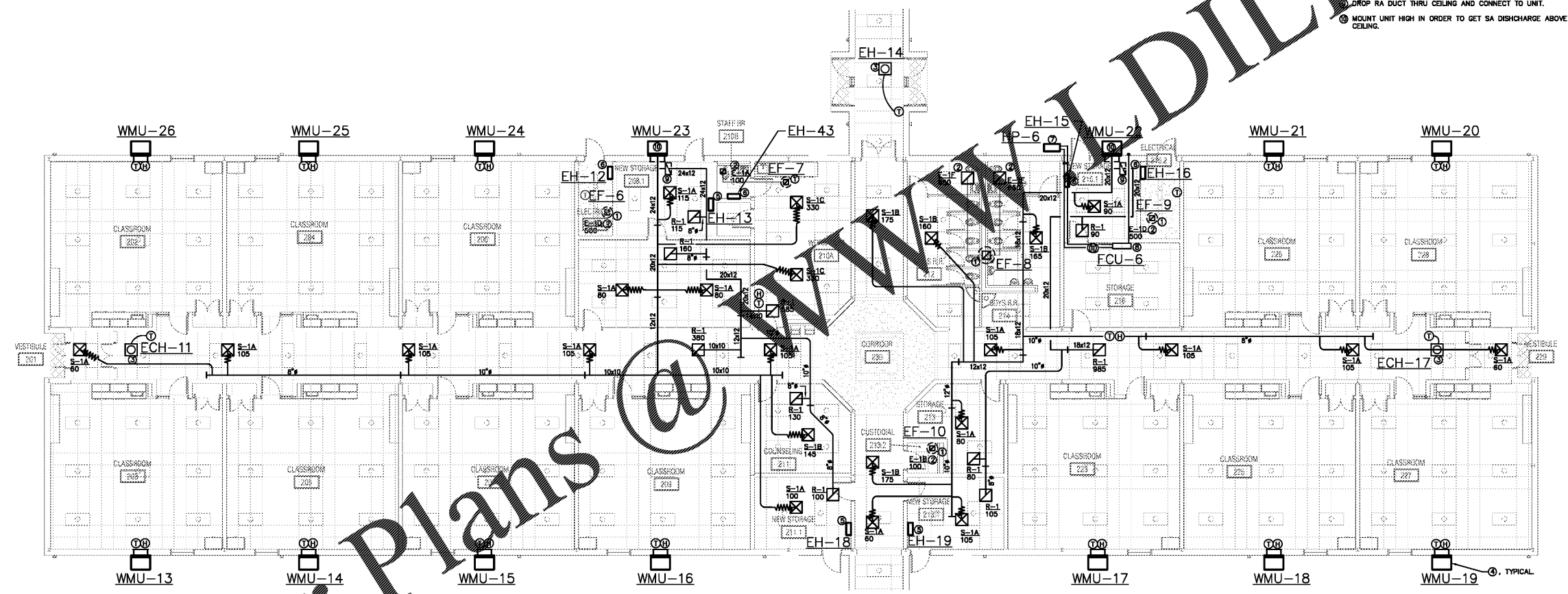
**DUNLEITH ELEMENTARY SCHOOL  
RENOVATIONS & MODIFICATIONS**  
120 SAINTE DR. SW  
MARIETTA, GA 30008  
MARIETTA CITY SCHOOLS

**WING B  
CLASSROOMS-  
HVAC  
RENOVATION  
PLAN**

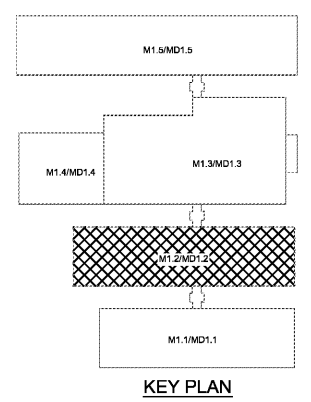
DATE 08/30/2019  
PROJECT NO. 18122

M1.2

- KEY NOTES:** (THIS SHEET ONLY)
- REPLACE EXISTING FAN ON ROOF. EXISTING DUCTWORK TO REMAIN. EXTEND/MODIFY EXISTING DUCT AS REQUIRED FOR CONNECTION TO NEW FAN.
  - REPLACE EXISTING CEILING AIR DEVICE. CONNECT NEW SA DIFFUSER/EXH/RA GRILLE TO EXISTING DUCT. PROVIDE NEW FLEXIBLE CONNECTION FOR SA DIFFUSERS. PROVIDE NECESSARY TRANSITIONS FOR CONNECTING TO EXISTING DUCT.
  - REPLACE EXISTING ELECTRIC CEILING HEATER AND ASSOCIATED WALL MOUNT TSTAT.
  - NEW GAS WALL MOUNT UNIT. PROVIDE MOUNT BRACKET BETWEEN SUPPLY AND RETURN RILLES UNLESS SHOWN IN DIFFERENT LOCATION. PROVIDE NEW DRY WELLS FOR CONDENSATE. SEE SHEET M0.2 FOR DETAIL. SEE ARCH. DWGS. FOR EXACT UNIFORMATION.
  - REPLACE EXISTING ELECTRIC WALL HEATER. RELOCATE TO ±4'-0" A.F.
  - REPLACE EXISTING ELECTRIC WALL HEATER.
  - NEW DUCTLESS OUTDOOR HEAT PUMP UNIT. MOUNT ON EXISTING CONC. PAD. UTILIZE EXISTING OPENINGS FOR NEW LINES.
  - NEW DUCTLESS INDOOR HIGH SIDEWALL UNIT.
  - DROP RA DUCT THRU CEILING AND CONNECT TO UNIT.
  - MOUNT UNIT HIGH IN ORDER TO GET SA DISCHARGE ABOVE CEILING.



1 WING B CLASSROOMS-HVAC RENOVATION PLAN  
M1.2 1/8" = 1'-0"



*Order Plans @*