

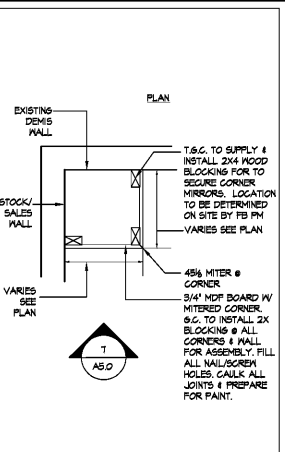
1 DOOR TYPES

<p>SET 1A - SALES/CORRIDOR DOOR SET 1B - CORRIDOR/STOCKROOM DOOR SET 1C - CORRIDOR/STOCKROOM DOUBLE DOOR</p> <p>CLOSER: NORTON 8500-H HINGE SIDE MTD. (SET TO BE S.L.B. MAX OPENING FORCE) ADJUST MOUNTING POINTS FOR MIN. 120# ROTATION.</p> <p>HINGES: HAGER A8800, 1-1/2" PAIR STAINLESS STEEL MARKER, A66A ABL07Y HINGE #H425, SUPPORT PIVOT, US26.</p> <p>PULL 1A: HAGER 4-1/8" HELL PULL, PLATE FIN. FULL, STAINLESS #4 FINISHED METAL (SALES/CORRIDOR).</p> <p>PUSH 1A: HAGER 4-1/8" #505 PUSH PLATE STAINLESS #4 FINISHED METAL, IV STAINLESS #4 FINISHED METAL, COUNTERSUNK SCREWS (SALES/CORRIDOR).</p> <p>LOCK 1B: KABA-E-PLEX 2000 SERIES IV POWERSTAR OPTION, 1-PIN BEST ACCEPTABLE CORE, SATIN CHROME FINISH.</p> <p>LOCK 1C: KABA-E-PLEX 2000 SERIES IV POWERSTAR OPTION, 1-PIN BEST ACCEPTABLE CORE, SATIN CHROME FINISH IV HAGER 2022 AUTOMATIC FLUSH BOLT, 2"X2" TO COORDINATOR BAR, 4 HAGER 250X DUST PROOF STRIKE ASTRASAL HOLDING.</p> <p>STOP: IVES #446 HALL MTD. OR #446 FLOOR MTD. AS REGD US260.</p> <p>KICK PLATE: (1) 26"x48" & (2) 26"x24" 1/8" GA. KICK PLATE. INSTALL 1/8" S. COUNTERSUNK SCREWS ON PUSH & PULL SIDE. VERIFY SIZE WITH DOOR SIZE.</p> <p>SILENCER: RESILIENT TYPE, REMOVABLE FOR REPLACEMENT, 3 EACH DOOR, MTD. IN FRAME.</p> <p>SMOKE SEAL: FENKO #8680 (USE AT RATED DOORS ONLY).</p> <p>FOOT: HOLD OPEN FOOT, HAGER 2100-US260.</p>	<p>SET #2A - TOILET #2B - MANAGERS OFFICE, #2C - EXCESS AREA BREAKROOM DOORS</p> <p>CLOSER: NORTON 8500-H HINGE SIDE MTD. (SET TO BE S.L.B. MAX OPENING FORCE) ADJUST MOUNTING POINTS FOR MIN. 120# ROTATION.</p> <p>HINGES: HAGER A8800, 1-1/2" PAIR STAINLESS STEEL MARKER, A66A ABL07Y HINGE #H425, SUPPORT PIVOT, US26.</p> <p>LOCK 2A: STANLEY MANUF. - BEST #93-0-L-15-57C-826 (260) (TOILET).</p> <p>LOCK 2B: STANLEY MANUF. - BEST #K8-T-AD-150-57C-638 (260) (MANAGERS).</p> <p>LOCK 2C: KABA-E-PLEX 2000 SERIES IV POWERSTAR OPTION, 1-PIN BEST ACCEPTABLE CORE, SATIN CHROME FINISH (BREAKROOM & EXCESS AREA).</p> <p>STOP: IVES #488 FLOOR MTD. IV RISER AS REGD. US260.</p> <p>SILENCER: RESILIENT TYPE, REMOVABLE FOR REPLACEMENT, 3 EACH DOOR, MTD. IN FRAME.</p> <p>FOOT: HOLD OPEN FOOT, HAGER 2100-US260. * ONLY INSTALL IN LOCATIONS WHERE CLOSERS EXCESS STORAGE AREAS THAT CONTAIN THE SPACE'S ELECTRICAL PANELS MAY REQUIRE A KNOX BOX AND A SIGN STATING ELECTRICAL ROOM FOR THE FIRE DEPARTMENT'S ACCESS. COORDINATE WITH LOCAL JURISDICTIONS PRIOR TO PURCHASE AND INSTALLATION.</p>	<p>SET #3 - EXIT DOOR WITH PANG. HARDWARE</p> <p>CLOSER: NORTON 8500-H HINGE SIDE MTD. (SET TO BE S.L.B. MAX OPENING FORCE) INCLUDE HOLD OPEN CLOSER, TYP. OF 1. *NEM CLOSER TO BE INSTALLED ON ALL (B) DOORS. ADJUST MOUNTING POINTS FOR MIN. 120# ROTATION.</p> <p>HINGES: HAGER A8800, 1-1/2" PAIR STAINLESS STEEL MARKER, A66A ABL07Y HINGE #H425, SUPPORT PIVOT, US26.</p> <p>EXIT DEVICE: ALARM EXIT DEVICE SINGLE DOOR, DETEX #V400E/M, WEATHERIZED ALARMED RM. DOUBLE DOOR, DETEX #V400E/M, WEATHERIZED ALARMED RM. EXIT DEVICE DPH-2250 & #4 DOUBLE DOOR STRIKE (ACTIVE & INACTIVE LEAF) VERTICAL ROX EXIT DEVICE TO HAVE 1-PIN BEST ACCEPTABLE CYLINDER. *NEM EXIT DEVICE TO BE INSTALLED ON ALL.*</p> <p>STOP: HAGER 2100 IVES #488 FLOOR MTD. WITH RISER AS REGD. US260.</p> <p>KICK PLATE: 36"x48" 1/8" GA. KICK PLATE. INSTALL 1/8" S. COUNTERSUNK SCREWS ON PUSH SIDE. VERIFY SIZE WITH DOOR SIZE.</p> <p>SILENCER: RESILIENT TYPE, REMOVABLE FOR REPLACEMENT, 3 EACH DOOR, MTD. IN FRAME.</p> <p>SMOKE SEAL: FENKO #8680 (USE AT RATED DOORS ONLY).</p> <p>FOOT: HOLD OPEN FOOT, HAGER 2100-US260.</p> <p>WEATHERING: ALUM. STEEL THRESHOLD COMPLETE WITH WEATHER-STRIPPING AND SMOKE GASKET. (EXTERIOR DOORS)</p> <p>SECURITY: SECURITY ASTRASAL, NATIONAL GUARD PRODUCTS W85P PULL HT. OF DOOR, INSTALL IV SECURITY SCREENS.</p> <p>VIEWER: 180 DEGREE VIEWER - HAGER 1755</p> <p>CHAIN HOLD: HAGER DOOR CHAIN - #3000-25 1" - US260.</p>
---	--	--

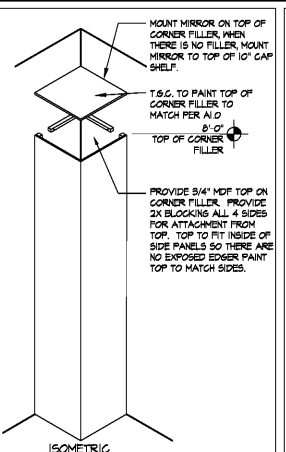
- A. ALL HARDWARE LISTED BELOW SHALL BE SUPPLIED BY LL, UNLESS OTHERWISE NOTED.
- B. ALL HARDWARE SHALL HAVE SATIN CHROME FINISH, UNLESS OTHERWISE NOTED.
- C. OPENINGS SHALL BE MINIMUM OF 32" WIDE WHEN DOORS ARE AT A RIGHT ANGLE TO THE CLOSED POSITION.
- D. MAX EFFORT TO OPERATE DOOR SHALL NOT EXCEED 9.5 POINTS FOR EXTERIOR DOORS AND 9 POINTS FOR INTERIOR DOORS WITH A PULL OF RUSH EFFORT BEING APPLIED AT RIGHT ANGLES TO HINGED DOORS AND AT THE CENTER PLANE OF SLIDING OR FOLDING DOORS. COMPENSATING DEVICES OR AUTOMATIC DOOR OPERATIONS MAY BE UTILIZED TO MEET THE ABOVE STANDARDS. WHEN FIRE DOORS ARE REQUIRED, THE MAX EFFORT TO OPERATE THE DOORWAY MAY BE INCREASED NOT TO EXCEED 14 POUNDS WITH CLOSURE.
- E. INTERIOR METAL DOORS SHALL BE 20 GA. ALL EXTERIOR DOORS SHALL BE 18 GA.
- F. HAND ACTIVATED DOOR OPENING HARDWARE SHALL BE CENTERED BETWEEN 50" AND 44" ABOVE THE FINISHED FLOOR.

A DOOR/HARDWARE NOTES

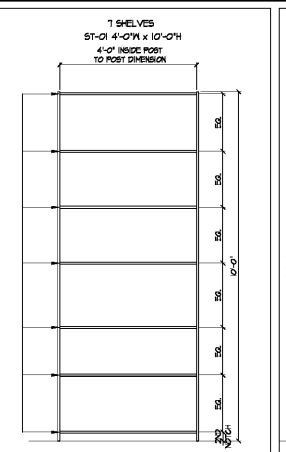
NOTE:
 LL GENERAL CONTRACTOR TO SUPPLY BEST 1-PIN CONSTRUCTION CORES ON ALL LOCKING DOORS WITH CONTROL KEY AND OPERATING KEYS.



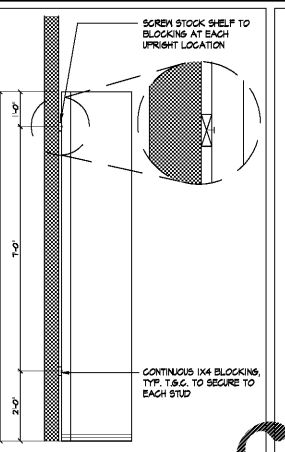
6 CORNER FILLER DTL-1



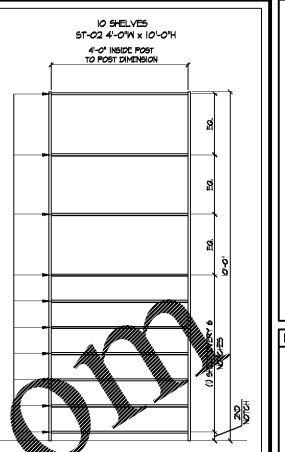
7 CORNER FILLER DTL-2



8 STOCK SHELF ELEV.

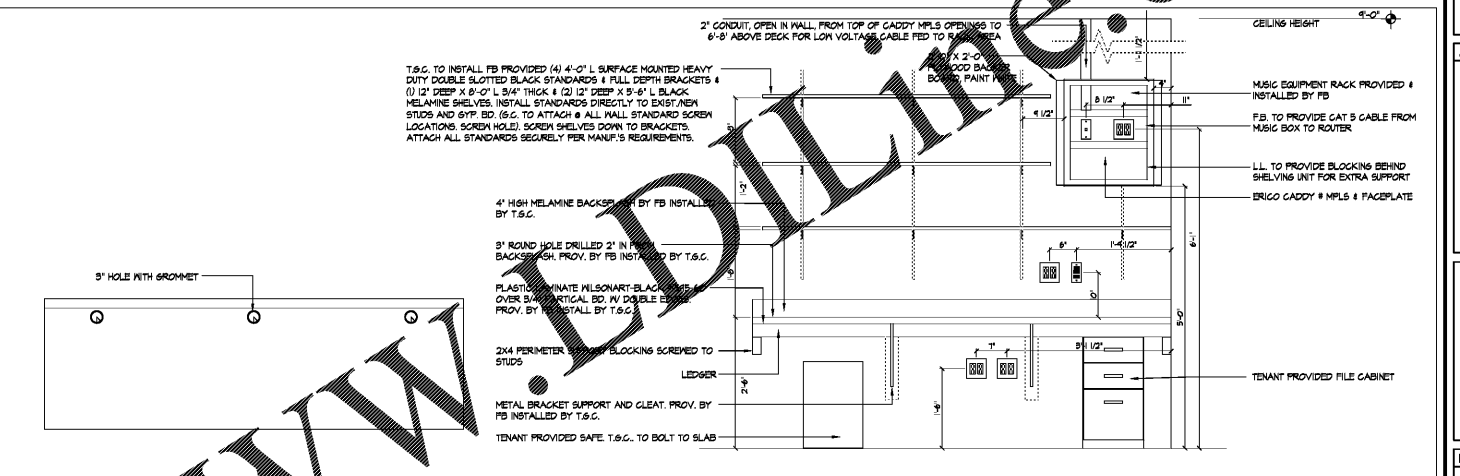


8A STOCK SHELF BRACING



8B BEVERAGE SHELF ELEV.

6 CORNER FILLER DTL-1 7 CORNER FILLER DTL-2 8 STOCK SHELF ELEV. 8A STOCK SHELF BRACING 8B BEVERAGE SHELF ELEV.

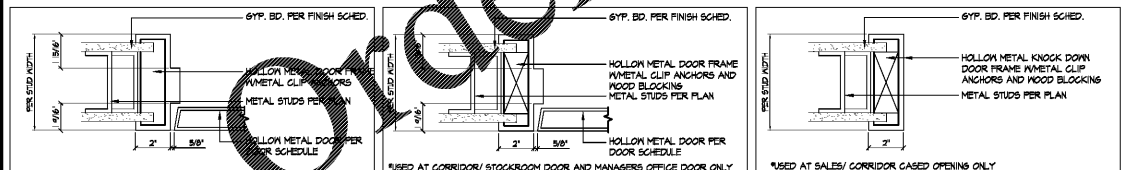


9 MANAGERS DESK ELEVATION/ PLAN VIEW SCALE 1/4"=1'-0"

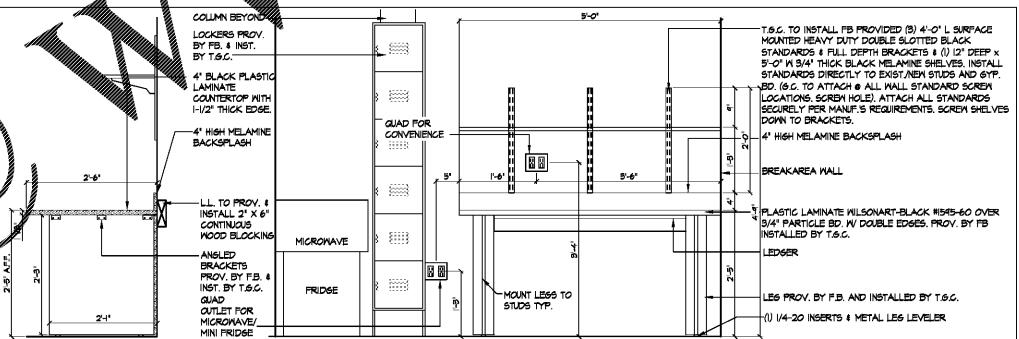
2 DOOR HARDWARE SPECS

DOOR NO.	LOCATION	TYPE	THICKNESS	DOOR	FRAME	FINISHES	HARDWARE SET	REMARKS
1	STOREFRONT ENTRY	N/A	N/A	STOREFRONT	-	(2) 3'-0" x 8'-0"	#4	SUPPLIED & INSTALLED BY T.S.G. DEGREE ROTATION
2	SALES/CORRIDOR	N/A	N/A	N/A	-	5'-0" x 8'-0" CASSED OPENING	P-2	SUPPLIED & INSTALLED BY LL.
3	TOILET ROOM	1/4"	1/4"	HOLLOW METAL	-	3'-0" x 6'-8"	#2A	SUPPLIED & INSTALLED BY LL.
4	TOILET ROOM	1/4"	1/4"	HOLLOW METAL	-	3'-0" x 6'-8"	#2A	SUPPLIED & INSTALLED BY LL.
5	EXCESS DOOR	1/4"	1/4"	HOLLOW METAL	-	4'-0" x 8'-0"	#2A	SUPPLIED & INSTALLED BY LL.
6	CORRIDOR/STOCK	1/4"	1/4"	HOLLOW METAL	-	2'-0" x 8'-0" & 4'-0" x 8'-0"	#5	SUPPLIED & INSTALLED BY LL. ADJUST CLOSER FOR A 120 DEGREE ROTATION
7	MANAGERS OFFICE	1/4"	1/4"	HOLLOW METAL	-	3'-0" x 6'-8"	#2B	SUPPLIED & INSTALLED BY LL.
8	OVERHEAD ROLL-UP DOOR	--	--	STEEL	-	6'-0" x 8'-0"	#5	SUPPLIED & INSTALLED WITH R-7 INSULATION BY LL. F.B. TO PROV. & T.S.G. TO INSTALL PAULOCK.

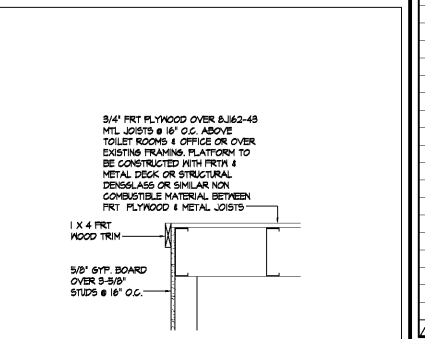
3 DOOR SCHEDULE



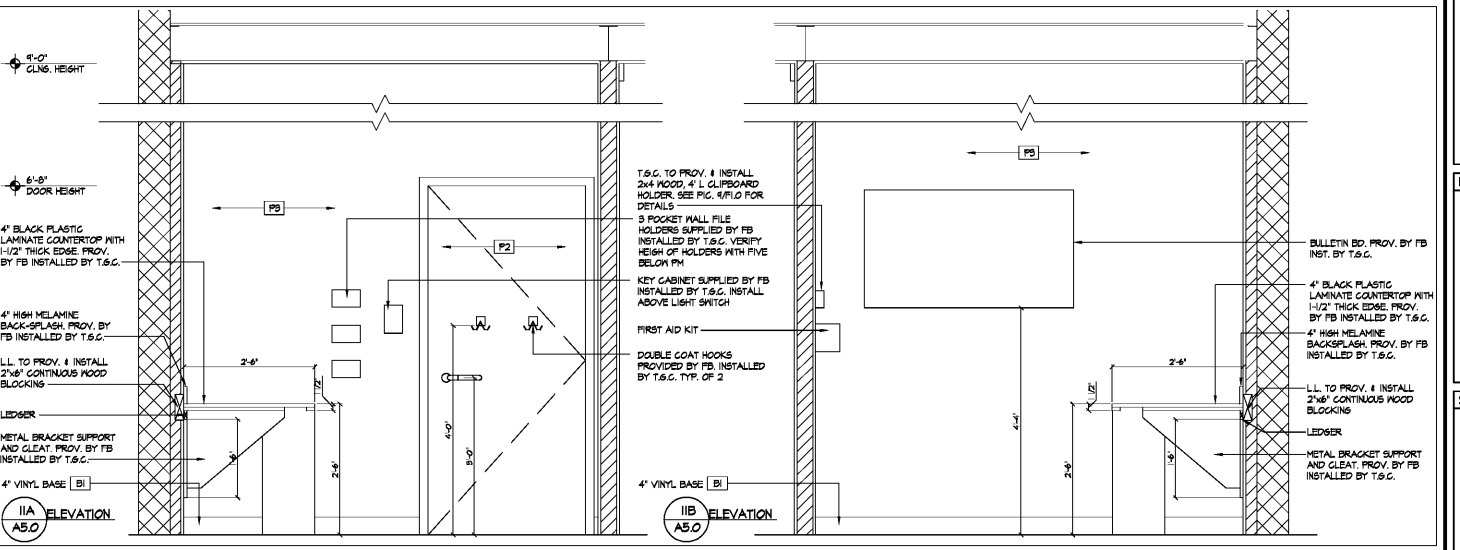
4 JAMB/HEAD DTL. SCALE 3/4"=1'-0" 4A JAMB/HEAD DTL. SCALE 3/4"=1'-0" 4B JAMB/HEAD DTL. SCALE 3/4"=1'-0"



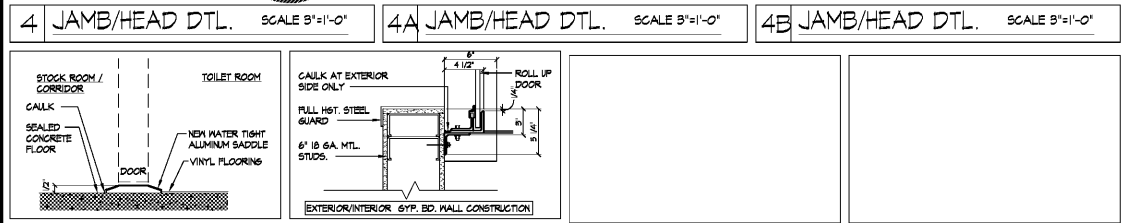
10 EMPLOYEE BREAK TABLE ELEVATION SCALE 1/4"=1'-0"



12 PLYWOOD DECK DTL. SCALE 1/4"=1'-0"



11 MANAGERS ROOM ELEVATION SCALE 1/4"=1'-0"



5 TRANS. DTL. SCALE 1/4"=1'-0" 5A JAMB DTL. SCALE 1/4"=1'-0" OPEN OPEN

ARCVISION
 INCORPORATED
 ARCHITECTURE / ENGINEERING
 SAINT LOUIS / DALLAS / LAS VEGAS / ORLANDO
 ST. LOUIS, MO 63146
 1180 BRAG ROAD, SUITE 300
 PH. (314) 415-2400 FAX (314) 415-2300
 www.arcvision.com

ENGINEER

ARCHITECTURAL SEAL

DATE ISSUE

DATE	REVISION	NAME

PROJECT NAME / LOCATION

five below
 NORTH LAKELAND
 919 LAKELAND PARK CENTER DRIVE
 LAKELAND, FL 33809

PROJECT INFORMATION

DATE: SEPTEMBER 18, 2019
 PROJECT NO. 190636
 DELIVERY TYPE: AS-IS

DRAWN: JTB
 CHECKED: JMD

SHEET TITLE / NUMBER

DOOR SCHEDULE, OFFICE, BREAK TABLE, NOTES & DETAILS

A5.0