

ENGINEER

ARCHITECTURAL SEAL

DATE ISSUE

DATE REVISION

DATE	REVISION	NAME
09/18/19	PERMIT / OWNER	

PROJECT NAME / LOCATION

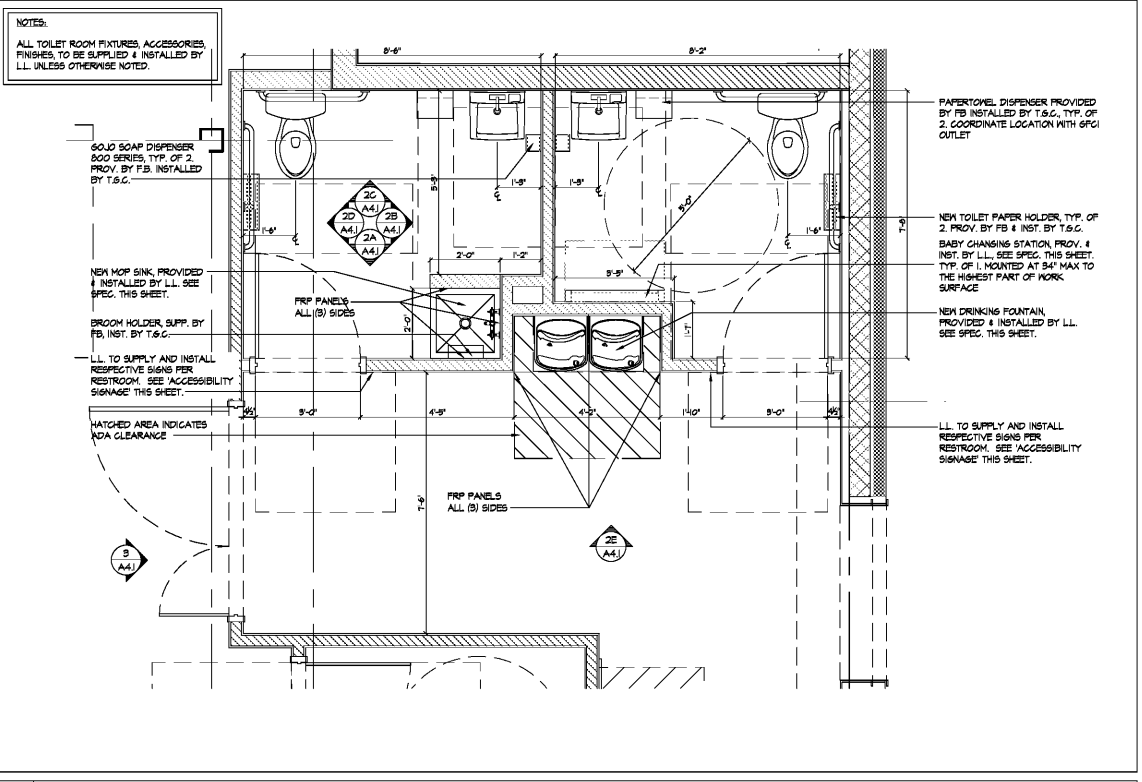
FIVE BELOW
 NORTH LAKELAND
 919 LAKELAND PARK CENTER DRIVE
 LAKELAND, FL 33809

PROJECT INFORMATION
 DATE: SEPTEMBER 18, 2019
 PROJECT NO.: 190636
 DELIVERY TYPE: AS-IS

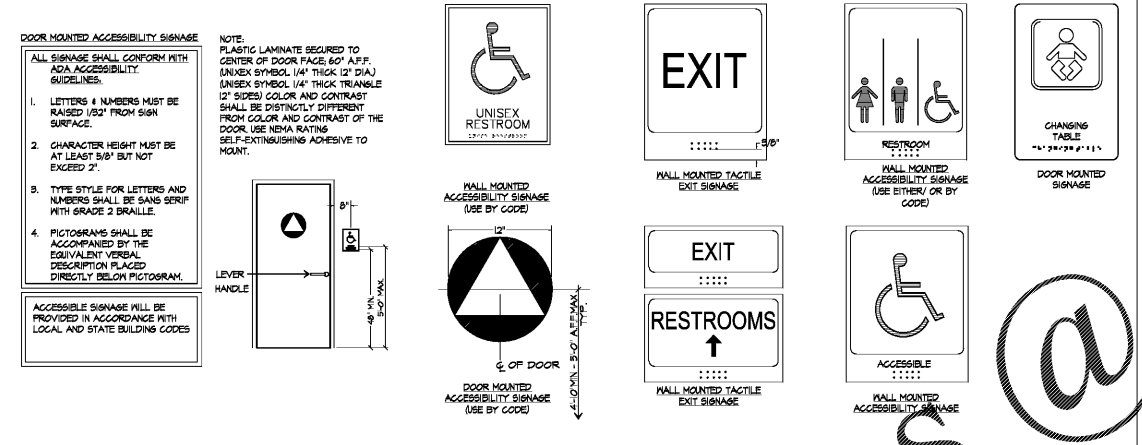
DRAWN: JTB
 CHECKED: JDM

SHEET TITLE / NUMBER
 RESTROOM ELEVATIONS,
 DETAILS & NOTES

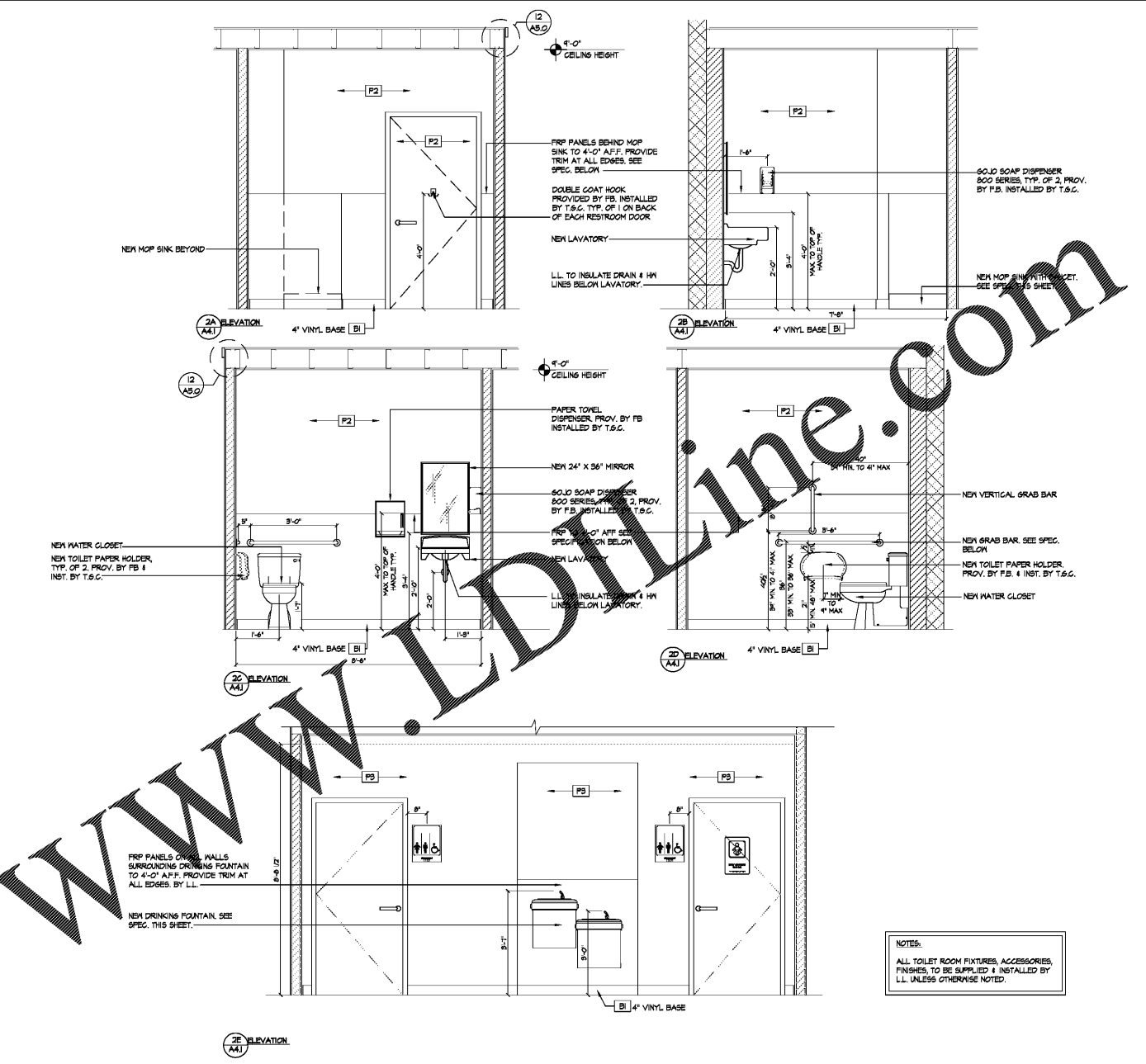
A4.1



1 TOILET ROOM / PLUMBING FIXTURE PLAN SCALE: 1/2" = 1'-0"



A ACCESSIBILITY SIGNAGE SCALE: N.T.S.



2 TOILET ROOM ELEVATIONS SCALE: 1/2" = 1'-0"

NOTES:
 1. DOORWAYS INTO UNISEX SANITARY FACILITIES SHALL BE IDENTIFIED BY A CIRCLE 1/4" THICK, 12" IN DIAMETER, WITH A 1/4" THICK TRIANGLE SUPERIMPOSED ON THE CIRCLE AND WITHIN THE 12" DIAMETER. THE GEOMETRIC SYMBOL SHALL BE CENTERED ON THE DOOR AT A HEIGHT OF 60" ABOVE THE FINISHED FLOOR AND SHALL BE OF A COLOR AND CONTRAST DISTINCTLY DIFFERENT FROM THE COLOR AND CONTRAST OF THE DOOR.
 2. A PERMANENT IDENTIFICATION SIGN, INCLUDING RAISED LETTERS ACCOMPANIED BY BRAILLE, SHALL BE INSTALLED ON THE WALL ADJACENT TO THE LATCH SIDE OF THE DOOR WHERE THERE IS NO WALL SPACE OR ON THE LATCH SIDE, THE SIGN SHALL BE PLACED ON THE NEAREST ADJACENT WALL, PREFERABLY ON THE RIGHT. MOUNTING HEIGHT SHALL BE 60" ABOVE FINISHED FLOOR TO THE CENTER LINE OF THE SIGN. MOUNTING LOCATION SHALL BE DETERMINED SO THAT A PERSON MAY APPROACH WITHIN 5' OF SIGNAGE WITHOUT ENCOUNTERING PROTRUDING OBJECTS OR STANDING.
 3. RAISED CHARACTERS OR SYMBOLS SHALL CONFIRM THE FOLLOWING:
 A. LETTERS AND NUMBERS ON THE PERMANENT IDENTIFICATION SIGN SHALL BE RAISED 1/32" MINIMUM AND SHALL BE SANS-SERIF UPPERCASE CHARACTERS ACCOMPANIED BY GRADE 2 BRAILLE.
 B. RAISED LETTERS OR SYMBOLS SHALL BE A MINIMUM OF 5/8" HIGH.
 C. PICTORIAL SYMBOL SIGNS (PICTOGRAMS) SHALL BE ACCOMPANIED BY THE EQUIVALENT VERBAL DESCRIPTION PLACED DIRECTLY BELOW THE PICTOGRAM. THE BORDER DIMENSION OF THE PICTOGRAM SHALL BE A MINIMUM OF 6" IN HEIGHT.
 4. CONTRACTED GRADE 2 BRAILLE SHALL BE USED ON THE PERMANENT IDENTIFICATION SIGNS. SIGNS SHALL BE 1/40" ON CENTERS IN EACH CELL WITH 21/40" SPACE BETWEEN CELLS. DOTS SHALL BE RAISED A MINIMUM OF 1/40" ABOVE THE BACKGROUND.
 5. LETTERS AND NUMBERS ON THE PERMANENT IDENTIFICATION SIGN SHALL HAVE A HEIGHT TO WIDTH RATIO OF BETWEEN 3:5 AND 1:1 AND A STROKE WIDTH TO HEIGHT RATIO BETWEEN 1:3 AND 2:1.
 6. CHARACTERS AND NUMBERS ON THE PERMANENT IDENTIFICATION SIGN SHALL BE SIZED ACCORDINGS TO THE VIEWING DISTANCE FROM WHICH THEY ARE TO BE READ. THE MINIMUM HEIGHT IS HEADLINE USING AN UPPERCASE X. LOWER CASE CHARACTERS ARE PERMITTED.
 7. CHARACTERS AND SYMBOLS SHALL CONTRAST WITH THEIR BACKGROUND, EITHER LIGHT CHARACTERS ON A DARK BACKGROUND OR DARK CHARACTERS ON A LIGHT BACKGROUND.

B ACCESSIBILITY SIGNAGE NOTES

NOTE:
 THIS DRAWING REPRESENTS MIN. REQUIREMENTS AND IS DIAGNOSTIC ONLY. EXACT LOCATION, FINISHES AND CONFIGURATION SHALL BE COORDINATED WITH THE ARCHITECT'S DRAWINGS AND HOODING AS REQUIRED.

WATER CLOSET:
 ONE (1) SIDE WALL 36" LONG (MIN) MOUNTED MAX. 12" FROM FACE OF REAR WALL. AMERICAN STANDARD #2467-016- PRESSURE ASSIST. MATERS TOILET. COLOR: WHITE. WITH MATCHING OLSONITE PHS OPEN FRONT. TOP OF SEAT AT 18 1/2" AFF. MAX. TOILET FLUSH CONTROL SHALL BE OPERABLE WITH ONE HAND, WITHOUT TIGHT GRASPING OR TWISTING OF THE WRIST. MAX. FORCE OF 5 LBS. TOILET FLUSH CONTROL SHALL BE LOCATED ON THE OPEN SIDE OF TANK (OPPOSITE SIDE WALL) AT A MAX HEIGHT OF 44" AFF., UNLESS OTHERWISE NOTED.

LAVATORY:
 AMERICAN STANDARD #0556-421 LUCERNE WALL HNG LAVATORY. COLOR: WHITE WITH GERAMAX 2000100 FAUCET NO. 7118 1/8 GRID. HOT WATER AND DRAIN LINES LOCATED UNDER LAVATORY SHALL BE INSULATED OR OTHERWISE PROTECTED. FAUCET CONTROLS SHALL BE OPERABLE WITH ONE HAND, WITHOUT TIGHT GRASPING OR TWISTING OF THE WRIST, AND A MAX FORCE OF 5 LBS.

GRAB BARS:
 ONE AT SIDE WALL 42" LONG (MIN) MOUNTED MAX 12" FROM FACE OF REAR WALL.
 ONE AT SIDE WALL 36" LONG (MIN) VERTICAL MOUNTED MAX 4" FROM FACE OF REAR WALL.
 ONE AT BACK WALL 36" LONG (MIN) MOUNTED MAX 6" FROM FACE OF SIDE WALL.
 GRAB BARS SHALL BE 1 1/2" CLEAR FROM WALL (1 1/4" DIAMETER) MOUNTED AT 39" AFF TO CENTERLINE. BOBRICK B-3008 SERIES WITH 2506 SERIES ANCHOR PLATES WITHSTAND 250 LB. VERTICAL AND HORIZONTAL PRESSURE. GRAB BARS SHALL NOT ROTATE WITHIN THEIR FITTINGS. EDGES SHALL HAVE A MIN. RADIUS OF 1/8"

SIGNAGE:
 PROVIDE HANDICAP SIGN 1 1/4" HIGH MOUNTED AT 60" AFF. ADJACENT TO LATCHSIDE

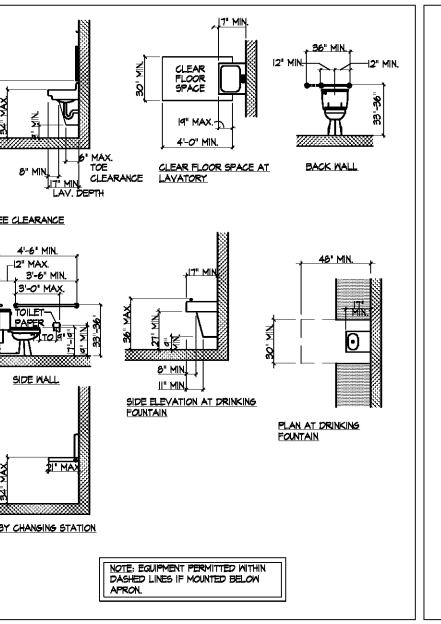
ACCESSORIES:
 MIRRORS #645-3436 & BABY CHANGING STATION KOALA KARE #KB208-01 (PROV. & INST. BY L.L.). TOILET PAPER DISPENSER SCA-36TR & SOLID SOAP DISPENSER 800 SERIES, PROV. BY F.B. INSTALLED BY T.S.G. TO COORDINATE LOCATION WITH SFGI OUTLET.
 PROVIDE NON-ABSORBENT FINISH ON WALLS TO 4'-0" AFF. FR.P. (OR APPROVED EQUAL) COLOR TO BE WHITE

MOP SINK:
 CRANE PLUMBING # M52424: 24"X24"X10" MOP BASIN, WHITE. FINISH BY PLAT #850-AA FAUCET #V 3 HORE.

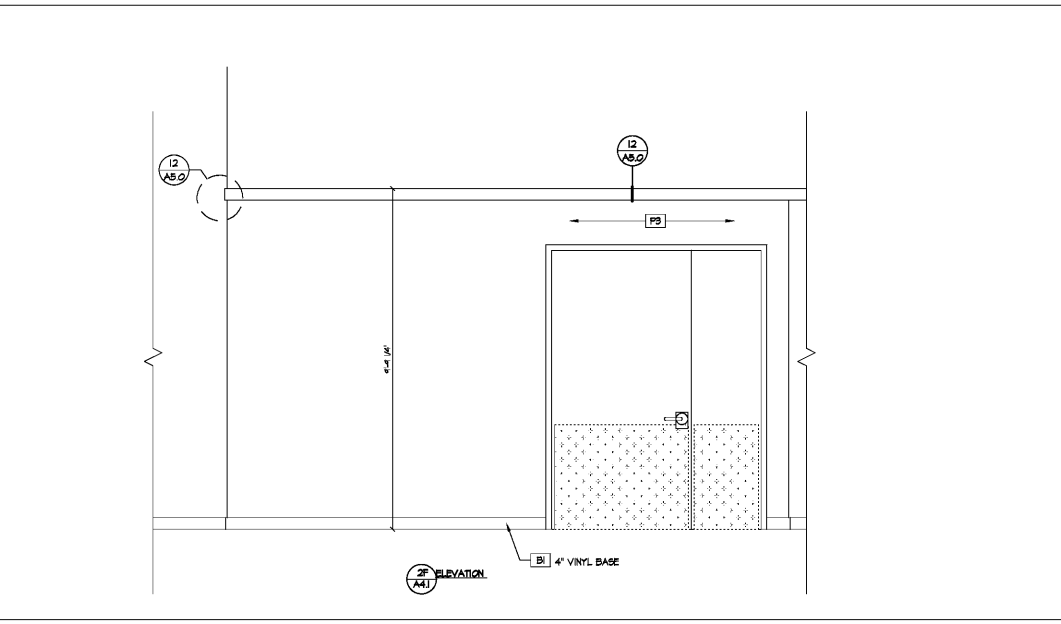
DRINKING FOUNTAIN:
 ELKAY MODEL E2518C H/L/O STYLE PUSH BAR FRONT/SIDES

TOILET PARTITIONS:
 BOBRICK, HIGH PRESSURE LAMINATE, CLASSIC SERIES 154, COLOR BEIGE

C TOILET ACCESSORY NOTES



D CABO/ANSI STANDARDS SCALE: 1/4" = 1'-0"



3 STOCK ROOM ELEVATION SCALE: 1/2" = 1'-0"